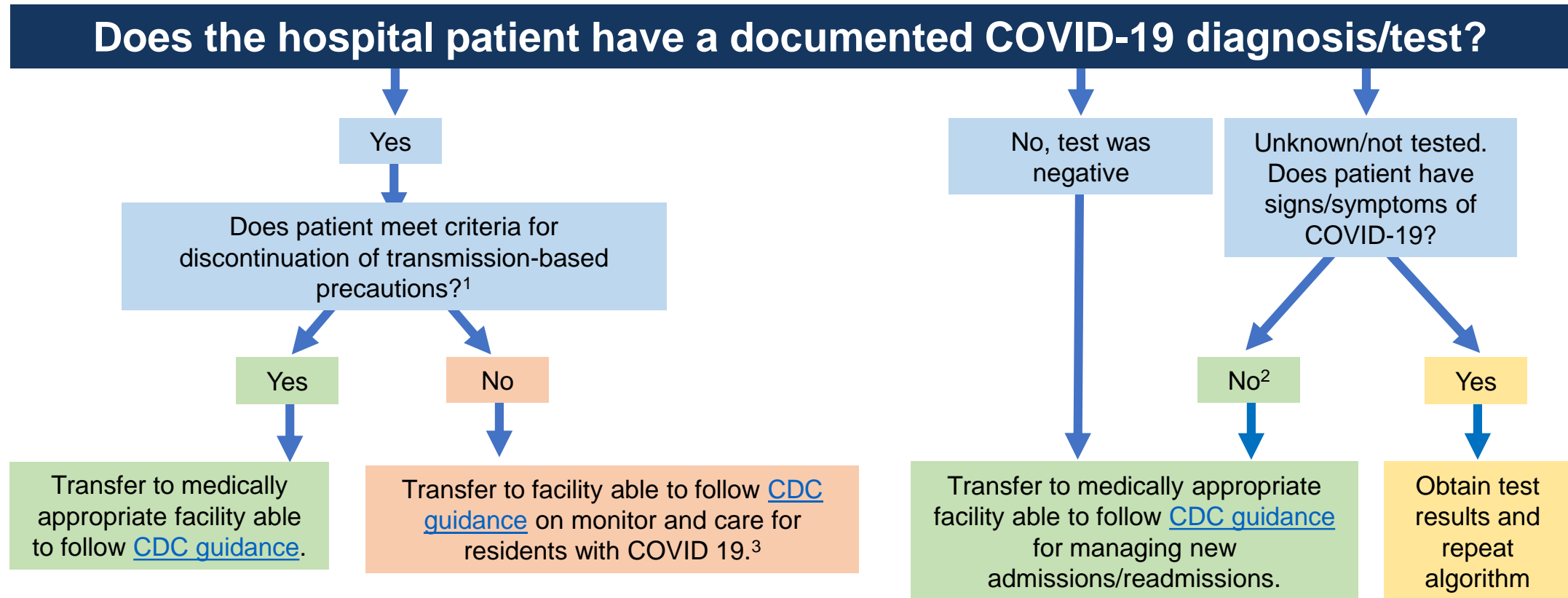


Flow Diagram for Hospitalized Patients Being Discharged to a Long-term Care Facility



1. Guidance on discontinuation of transmission-based precautions is available at <https://www.cdc.gov/coronavirus/2019-ncov/hcp/disposition-hospitalized-patients.html>
2. CMS states testing can be considered if available. Testing should be considered in non-surge scenarios. Since the ability to detect transmission is limited during the incubation phase, a negative test does not rule out COVID-19 and patients should still be placed on 14-day transmission precautions when transferred to long-term care.
3. Check with facility to determine if patients who require aerosolizing procedures, e.g. nebulizer treatment, are appropriate for transfer.