

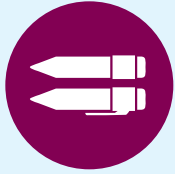
# ADVANCED LEARNING LABS

A partnership between the North Carolina Department of Public Instruction and Duke TIP  
TO ENGAGE, ACTIVATE, AND GROW OUR STUDENTS

GRADES

8–9

## Lab 5 • Responsibility



### ENGLISH LANGUAGE ARTS

National Parks are closed to visitors during this pandemic. Because of that, wildlife has begun reclaiming tourist areas. Bears, coyotes, eagles and other wild animals have been spotted wandering openly in national parks. Explain the impact that humans have made on wildlife in national parks over time. What was the original intention of the parks and how has COVID-19 changed the structure or intentions of the parks?

Do tourists help promote or hinder the original intention of national parks? Do we have a responsibility to allow wildlife its own untouched areas?

Write a letter to the Superintendent of National Parks defending your opinion.



### SOCIAL STUDIES

North Carolina played an important role in the Civil Rights Movement including the Greensboro Four and many desegregation court cases. Read the linked article and choose one of the key events they detail.

**Link:** <https://www.charlotteobserver.com/news/local/article223223740.html>

Write a speech as if you were the speaker at a memorial for this event. Share details of the event and impact while reminding your audience what their responsibility is in remembering the legacy of the movement.

Present your speech to a friend or family member. Record yourself if you can and replay it while observing your tone and body language while speaking.



### SCIENCE

While the extreme wildfires in Australia early this year have ended, ash and charred debris are prevalent. As the rains return, scientists continue to be concerned about the effects that material will have on rivers, groundwater, and the ocean. Predict some of the impact on water quality, identifying the similarities and differences on groundwater, rivers, and oceans; provide a brief explanation of each.

How can you help build awareness and foster understanding of the impact on water quality? Who is the target audience for this information? What is the best way to present this information to your target audience?

For more information about how the Australian wildfires have threatened to pollute water, see the link below: <https://on.natgeo.com/3e4sDq8>



### MINDFULNESS

Take time this week to be responsible for creating an activity that promotes FamilyTime. It can involve Game Night, organizing a call with your family in different areas of the city, state, or country, or set a time after dinner to talk with your family about current events.

Continue this responsibility each week by encouraging a member of your family to be in charge of promoting the FamilyTime Activity or make it your new responsibility!



## LOGIC PUZZLE

Use number logic and simple rules to reveal the hidden picture in this griddler.

Follow this link: <https://bit.ly/2xT9p7s>

For more information about nonograms, visit: [https://puzzlygame.com/pages/how\\_to\\_play\\_nonograms/](https://puzzlygame.com/pages/how_to_play_nonograms/)



## FIELD STUDIES

The National Geographic video linked below explores a push to live off the land in Hawaii in modern day. It shows how some Hawaiians have taken responsibility for sourcing their own food locally instead of relying on imports for food.

What ways do you think the Hawaiian government can support citizens to have more sustainable food choices? To what extent do you think the government should encourage and support local movements? How does globalization effect Hawaii and other island nations' abilities to provide for themselves?

Link: <https://www.youtube.com/watch?v=jXEepvG6Hc>



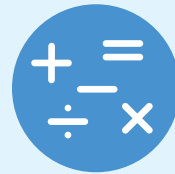
## RESEARCH EXPLORATIONS

Ecologists are scientists who study the relationships between living organisms, including humans, and their habitats.

Choose two animals that live in the wild, each on a different continent, to research.

- What are the animals' needs for water (related to habitat and drinking)?
- What are the potential water issues they face (e.g., drought, pollution, predators)?
- How do humans affect the water that they need?

Create a brochure persuading (a) families at home and (b) businesses to each take 5 steps to make responsible changes in their daily life/business to help these two specific animals.



## MATH

The global pandemic has changed supply and demand for many products. Conduct an internet search to learn more about which products are most sought during the pandemic. For example, why are video games so valuable right now?

Review the Paradox of Value video to learn more. Create a series of functions and graphs that tell the story of 5 products. What does the data show about cost and product availability as a function of time? Have people been responsible consumers during the pandemic? What data supports your hypothesis? (Explore graphingstories.com for more practice with graphical representations of data.)

Supply and Demand: <https://youtu.be/7xSaL0xvrcA>  
The Paradox of Value: <https://youtu.be/e7S8jWh6AEs>  
Graphing Stories: <http://www.graphingstories.com/>



North Carolina Department of  
**PUBLIC INSTRUCTION**



# ADVANCED LEARNING LABS

A partnership between the North Carolina Department of Public Instruction and Duke TIP  
TO ENGAGE, ACTIVATE, AND GROW OUR STUDENTS

---

GRADES  
**K-12**

## Lab 5 • Responsibility

### Works Cited and Answers

#### **Works Cited:**

**4-5:** why is Art Expensive? <https://www.wonderopolis.org/wonder/why-is-art-expensive>

**6-7:** Why is Art so Expensive: <https://www.cnbc.com/video/2017/11/02/what-makes-art-so-expensive.html>

**8-9:** Supply and Demand: <https://youtu.be/7xSaL0xvrcA>;

The Paradox of Value: <https://youtu.be/e7S8jWh6AEs>;

Graphing Stories: <http://www.graphingstories.com/>

**10-12:** If I had a Million Dollars song: [https://www.youtube.com/watch?v=B4L3ls\\_6UYg](https://www.youtube.com/watch?v=B4L3ls_6UYg)