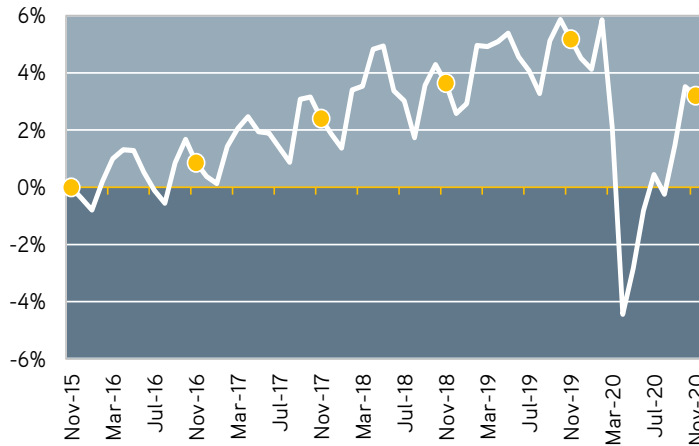


LABOR MARKET OVERVIEW

Regional Labor Market Snapshot

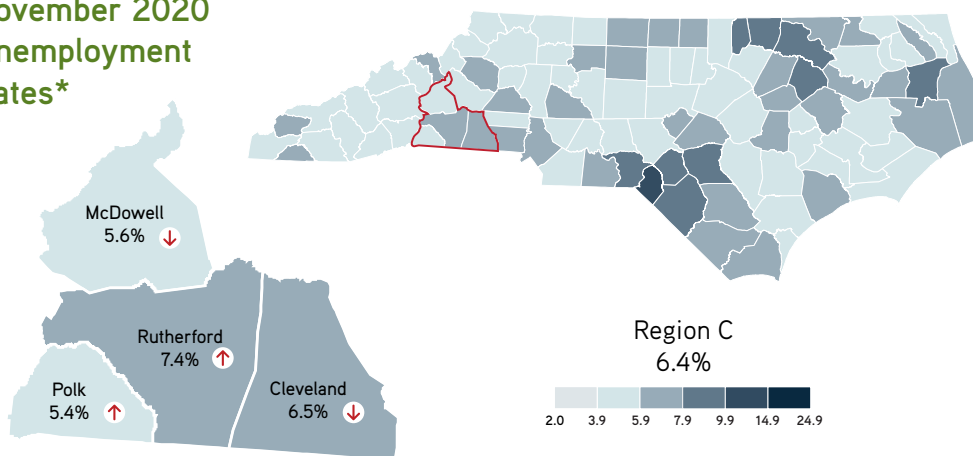
Change in Employment since 2015*



Region C

Source: LAUS, Labor & Economic Analysis, NC Dept. of Commerce

November 2020 Unemployment Rates*



Trending

UNEMPLOYMENT*

November 2020

Region C Total = 6,781

	Current	Previous
Region	6.4%	6.5%
NC	6.1%	6.0%
US	6.4%	6.6%

REGIONAL EMPLOYMENT*

Region C Total = 98,368

292 Fewer People Working in November than previous month

1,879 Fewer People Working than same period one year ago

METRO JOB GROWTH*

Charlotte Total = 1,185,200

9,800 More Jobs in November than previous month

Asheville Total = 181,600

1,000 More Jobs in November than previous month

TAXABLE RETAIL SALES

Region C Total = \$222,104,262

15.8% Higher than same period one year ago

Source: NC Dept. of Revenue
Note: October 2020 data most current available at time of release.

ONLINE JOB ADS

2,363 Online Advertised Vacancies reported in October

625 More Vacancies than same period one year ago

Source: LEAD/The Conference Board
Note: October 2020 data most current available at time of release.

Who's Hiring

past 90 days from Dec. 19, 2020

• Atrium Health	182
• Rutherford County Schools	109
• Mission Health	103
• Rutherford Regional Health System	81
• Dollar Tree, Inc.	47
• Telerx Marketing Inc dba C3i Solutions	45
• McDowell County Schools	44
• McDonald's Corporation	43

Source: DWS, NC Dept. of Commerce, NCWorks.gov

What Jobs

past 90 days from Dec. 19, 2020

• Registered Nurses	221
• First-Line Supervisors, Food Prep.	102
• Combined Food Prep. & Serving Workers	91
• Heavy & Tractor-Trailer Truck Drivers	58
• Driver/Sales Workers	57
• Lic. Practical & Lic. Vocational Nurses	55
• Retail Salespersons	55
• First-Line Supervisors, Retail	50

Source: DWS, NC Dept. of Commerce, NCWorks.gov

*November 2020 data are preliminary. Previous month's data are revised while all other data have undergone annual revision. All data produced in this publication are generated by LEAD unless otherwise stated. LEAD generated data are not seasonally adjusted.

This workforce product was funded by a grant awarded by the U.S. Department of Labor's Employment & Training Administration.

LABOR MARKET OVERVIEW

Region C Workforce Development Board

Civilian Labor Force Estimates*

		November 2020	October 2020	September 2020	November 2019
Cleveland	Labor Force	49,982	50,236	49,248	49,167
	Employed	46,736	46,905	45,556	47,278
	Unemployed	3,246	3,331	3,692	1,889
	Rate	6.5	6.6	7.5	3.8
McDowell	Labor Force	20,622	20,644	20,621	20,606
	Employed	19,462	19,473	19,383	19,859
	Unemployed	1,160	1,171	1,238	747
	Rate	5.6	5.7	6.0	3.6
Polk	Labor Force	8,915	9,004	8,918	9,050
	Employed	8,436	8,547	8,424	8,749
	Unemployed	479	457	494	301
	Rate	5.4	5.1	5.5	3.3
Rutherford	Labor Force	25,630	25,601	25,453	25,486
	Employed	23,734	23,735	23,352	24,361
	Unemployed	1,896	1,866	2,101	1,125
	Rate	7.4	7.3	8.3	4.4

*November 2020 data are preliminary. Previous month's data are revised while all other data have undergone annual revision. All data produced in this publication are generated by LEAD unless otherwise stated. LEAD generated data are not seasonally adjusted.

This workforce product was funded by a grant awarded by the U.S. Department of Labor's Employment and Training Administration. The product was created by the recipient and does not necessarily reflect the official position of the U.S. Department of Labor. The Department of Labor makes no guarantees, warranties, or assurances of any kind, express or implied, with respect to such information, including any information on linked sites and including, but not limited to, accuracy of the information or its completeness, timeliness, usefulness, adequacy, continued availability, or ownership. This product is copyrighted by the institution that created it. Internal use by an organization and/or personal use by an individual for non-commercial purposes is permissible. All other uses require the prior authorization of the copyright owner.

View other products from

