

PRELIMINARY  
NOT FOR CONSTRUCTION

© 2019 LaBella Associates

**ALAMANCE  
AGGREGATES, LLC**  
Mr. Chad Threatt, VP

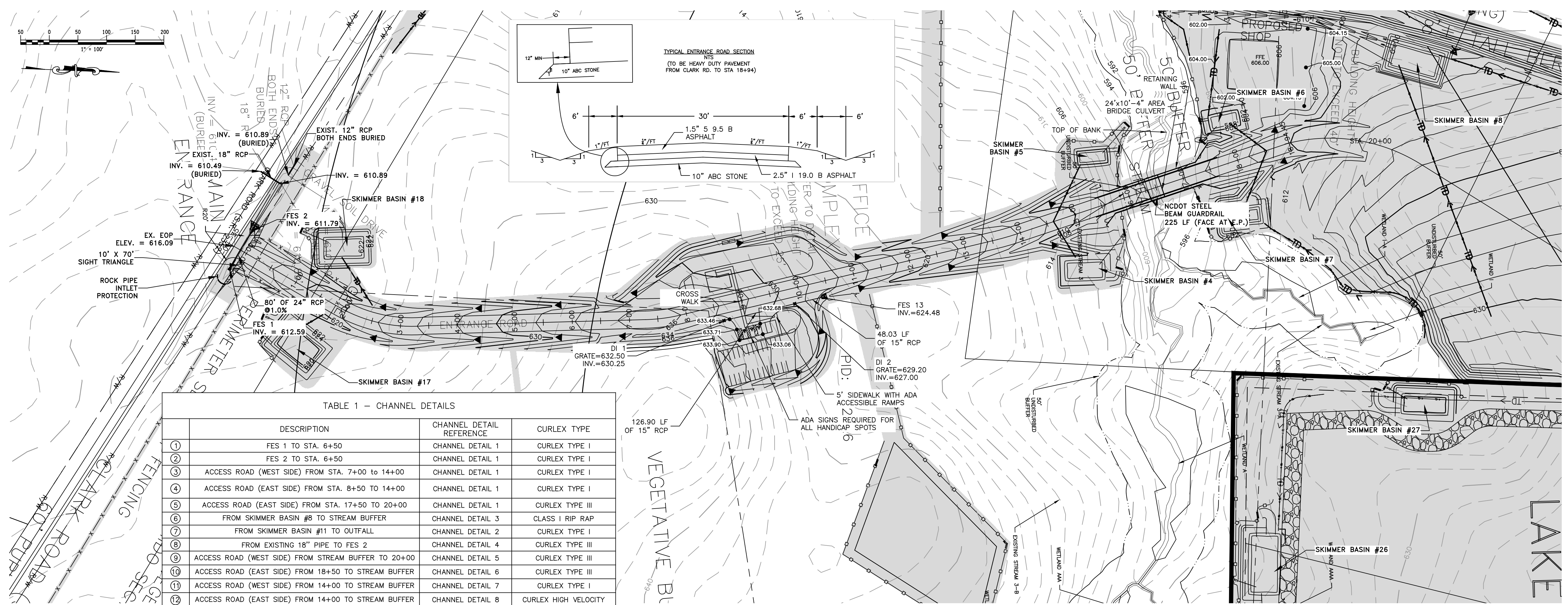
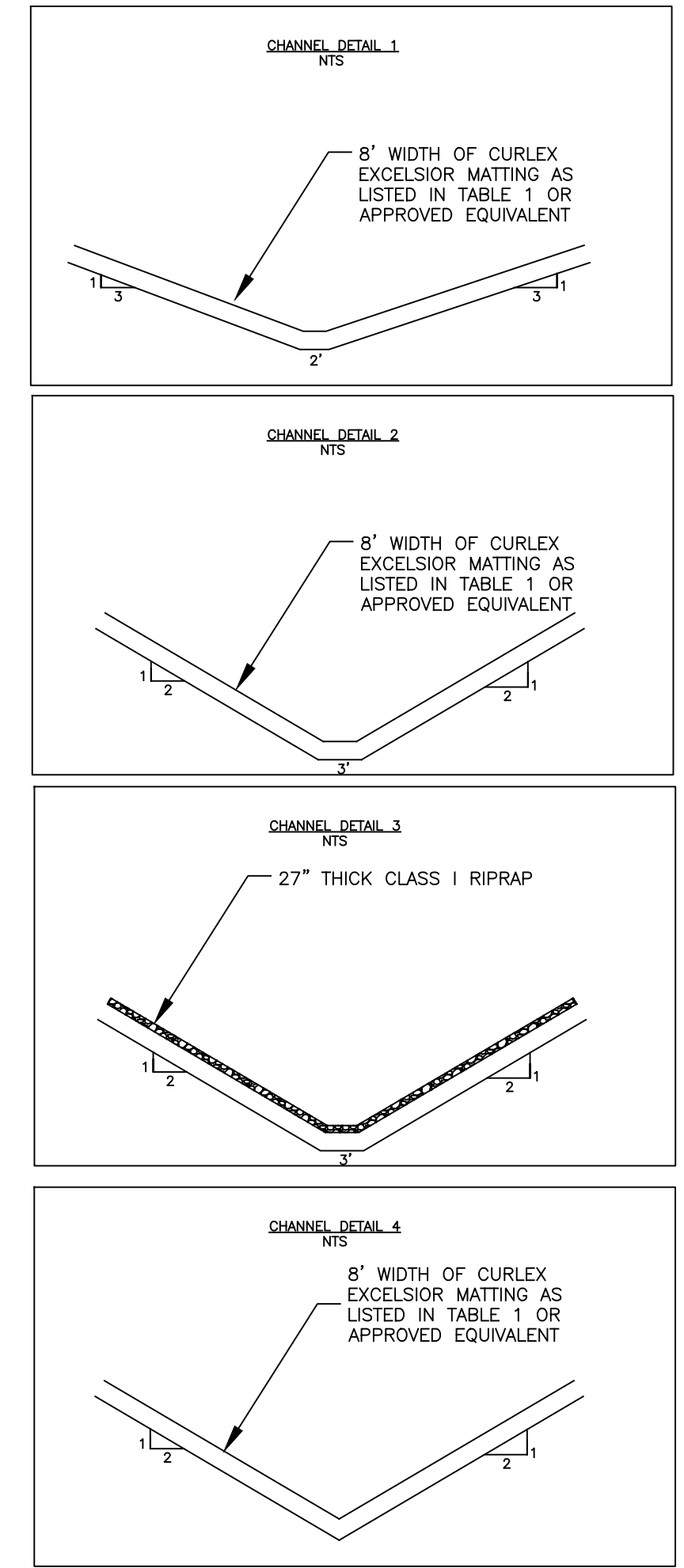
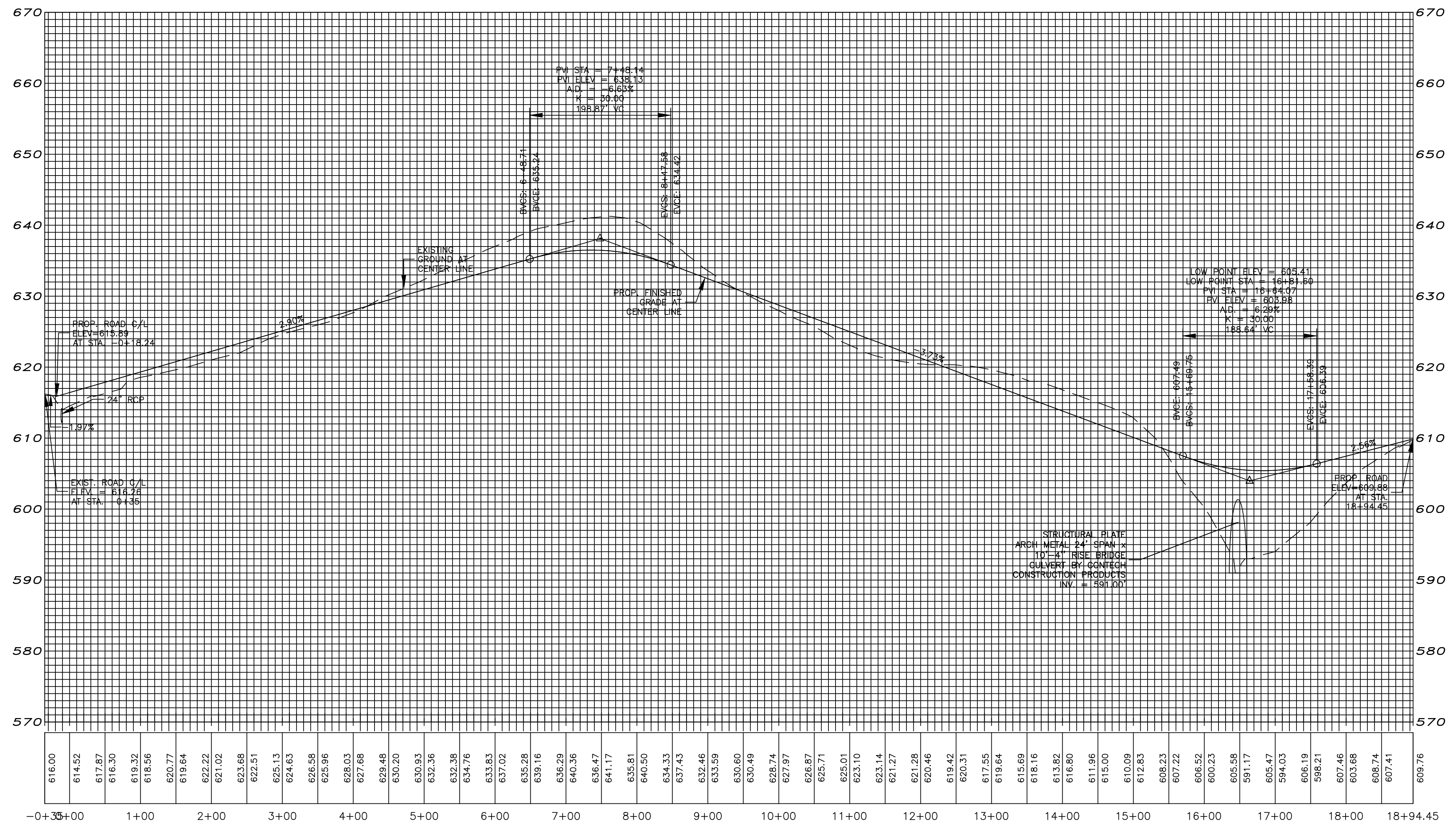


TABLE 1 - CHANNEL DETAILS

DESCRIPTION	CHANNEL DETAIL REFERENCE	CURLEX TYPE
FES 1 TO STA. 6+50	CHANNEL DETAIL 1	CURLEX TYPE I
FES 2 TO STA. 6+50	CHANNEL DETAIL 1	CURLEX TYPE I
ACCESS ROAD (WEST SIDE) FROM STA. 7+00 TO 14+00	CHANNEL DETAIL 1	CURLEX TYPE I
ACCESS ROAD (EAST SIDE) FROM STA. 8+50 TO 14+00	CHANNEL DETAIL 1	CURLEX TYPE I
ACCESS ROAD (EAST SIDE) FROM STA. 17+50 TO 20+00	CHANNEL DETAIL 1	CURLEX TYPE III
FROM SKIMMER BASIN #8 TO STREAM BUFFER	CHANNEL DETAIL 3	CLASS I RIP RAP
FROM SKIMMER BASIN #11 TO OUTFALL	CHANNEL DETAIL 2	CURLEX TYPE I
FROM EXISTING 18" PIPE TO FES 2	CHANNEL DETAIL 4	CURLEX TYPE III
ACCESS ROAD (WEST SIDE) FROM STREAM BUFFER TO 20+00	CHANNEL DETAIL 5	CURLEX TYPE III
ACCESS ROAD (EAST SIDE) FROM 18+50 TO STREAM BUFFER	CHANNEL DETAIL 6	CURLEX TYPE III
ACCESS ROAD (WEST SIDE) FROM 14+00 TO STREAM BUFFER	CHANNEL DETAIL 7	CURLEX TYPE I
ACCESS ROAD (EAST SIDE) FROM 14+00 TO STREAM BUFFER	CHANNEL DETAIL 8	CURLEX HIGH VELOCITY



Snow Camp Mine

NO.	DATE	DESCRIPTION
REVISIONS		
PROJECT NUMBER: 2190335		
DRAWN BY: KCG/ATC		
REVIEWED BY: PAS		
ISSUED FOR: REVIEW		
DATE: 5/8/19		
DRAWING NAME:		

**ENTRANCE ROAD  
PLAN AND PROFILE**

DRAWING NUMBER:

**C303**