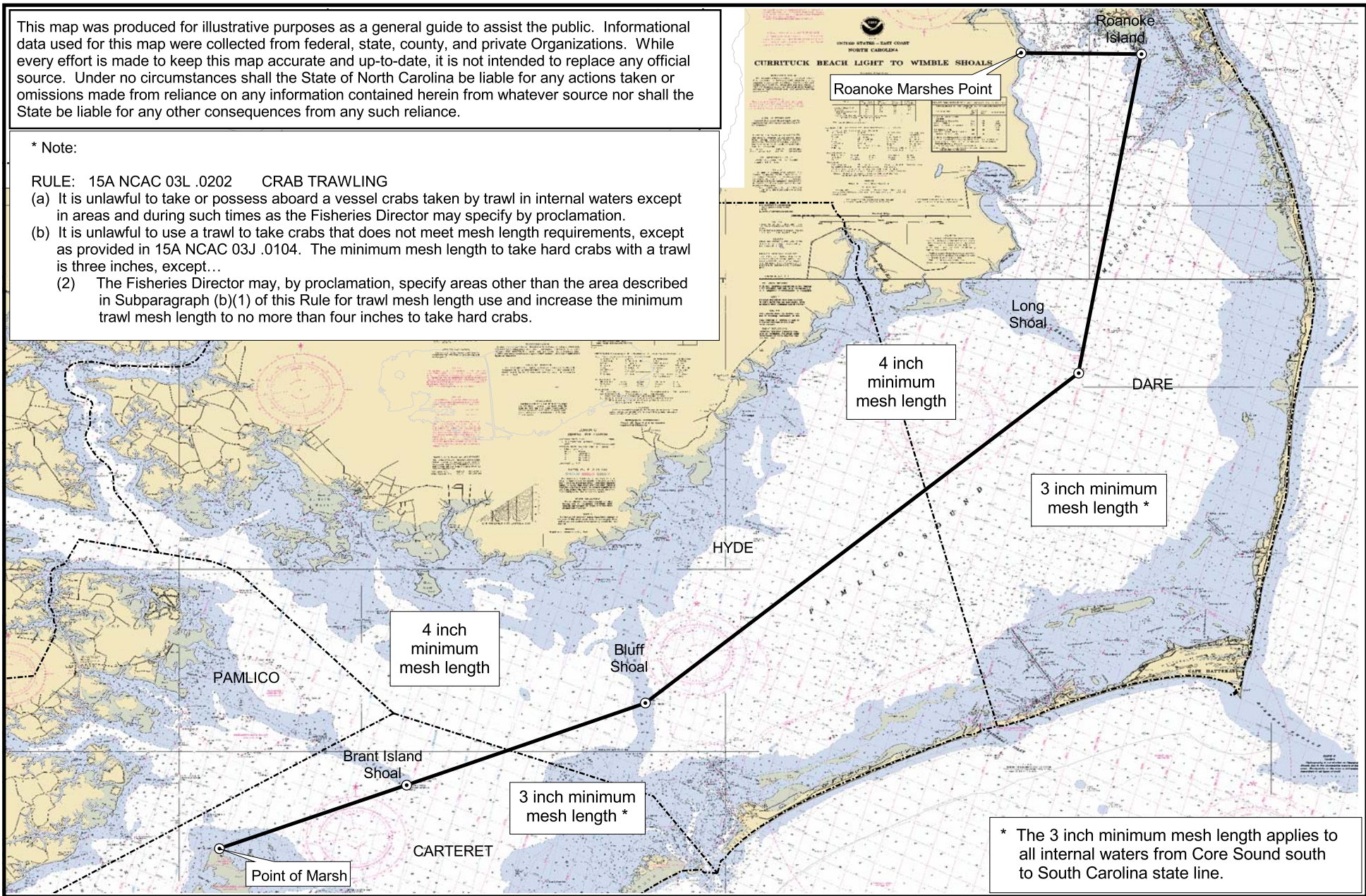


This map was produced for illustrative purposes as a general guide to assist the public. Informational data used for this map were collected from federal, state, county, and private Organizations. While every effort is made to keep this map accurate and up-to-date, it is not intended to replace any official source. Under no circumstances shall the State of North Carolina be liable for any actions taken or omissions made from reliance on any information contained herein from whatever source nor shall the State be liable for any other consequences from any such reliance.

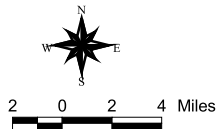
* Note:

RULE: 15A NCAC 03L .0202 CRAB TRAWLING

- (a) It is unlawful to take or possess aboard a vessel crabs taken by trawl in internal waters except in areas and during such times as the Fisheries Director may specify by proclamation.
- (b) It is unlawful to use a trawl to take crabs that does not meet mesh length requirements, except as provided in 15A NCAC 03J .0104. The minimum mesh length to take hard crabs with a trawl is three inches, except...
 - (2) The Fisheries Director may, by proclamation, specify areas other than the area described in Subparagraph (b)(1) of this Rule for trawl mesh length use and increase the minimum trawl mesh length to no more than four inches to take hard crabs.



locator map



CRAB TRAWLING
 (15A NCAC 03L .0202)
 (b) (1) Pamlico Sound

Map 1



Background maps are NOAA Nautical Charts.

Map Datum: NAD83
 Map Projection: NC State Plane
 Map Date: April 1, 2014

