

---

2015 Interbasin Transfer Certificate  
**2016 Annual Report**

Prepared for  
**Town of Cary**  
**Town of Apex**

Submitted to  
**North Carolina**  
**Division of Water Resources**

April 2017

Submitted by  
C. Jeff Adkins, PE  
Water Resources Manager  
Town of Cary  
PO Box 8005  
Cary, NC 27512-8005  
919-462-3846  
[jeff.adkins@townofcary.org](mailto:jeff.adkins@townofcary.org)

---

This page has been intentionally left blank.

# Contents

---

<b>Section</b>	<b>Page</b>
<b>Introduction.....</b>	<b>1-1</b>
<b>Withdrawals, Discharges and Interbasin Transfers .....</b>	<b>2-1</b>
2.1 IBT Certificate Limits .....	2-2
2.2 Summary of Water Withdrawals, Discharges and IBT .....	2-2
2.3 Monthly IBT .....	2-4
<b>Consumptive Use by Basin .....</b>	<b>3-1</b>
<b>Interbasin Transfer Certificate Conditions .....</b>	<b>4-1</b>
<b>Appendices .....</b>	<b>A</b>
A Daily Jordan Lake Water Supply Raw Water Withdrawals	
B Daily IBT Amounts	

This page has been intentionally left blank.

SECTION 1

# Introduction

On March 12, 2015, the North Carolina Environmental Management Commission (EMC) granted an interbasin transfer (IBT) certificate modification to the Towns of Cary and Apex (Towns) with transfer limits of 31 million gallons per day (mgd) from the Haw River basin to the Neuse River basin, and 2 mgd from the Haw River basin to the Cape Fear River basin, calculated as a daily average of a calendar month.

This 2016 Annual Report is specified in the Compliance and Monitoring Plan (Plan) approved by the North Carolina Division of Water Resources (NCDWR) on July 14, 2015. The schedule for reporting on IBT certificate compliance is provided in the Plan and repeated below.

TABLE 1-1  
**Interbasin Transfer Compliance Monitoring and Reporting**

Description <sup>a</sup>		Comments
IBT Limits	Daily average of a calendar month:	Daily average IBT is calculated daily and reported in the Annual IBT Report.
	- 31 mgd Haw to Neuse - 2 mgd Haw to Cape Fear	IBT calculated as the daily average of a calendar month reported on the Town of Cary website quarterly and in the Annual IBT Report.  The percentages of water use in each basin, summarized historically, and set for calculating daily IBT for the next year will be reported in the Annual IBT Report.
Condition 1	Water Conservation Plan	Initial submittal to NCDWR by June 10, 2015, and then revised as needed to obtain NCDWR approval. Updates, if necessary, will be provided to NCDWR in the Towns' respective Secondary and Cumulative Impacts Master Management Plan biennial updates.  Water Conservation Plan will always be available on the Town of Cary website. Status of the plan will be included in the Annual IBT Report.
Condition 2	Drought Management Plan	Initial submittal to NCDWR by June 10, 2015, and then revised as needed to obtain NCDWR approval. Updates will be provided to NCDWR as needed.  Drought Management Plan will always be available on the Town of Cary website. Status of the plan will be included in the Annual IBT Report.
Condition 3	IBT Compliance and Monitoring Plan	Initial submittal to NCDWR by June 10, 2015, and then revised as needed to obtain NCDWR approval.  IBT Compliance and Monitoring Plan will always be available on the Town of Cary website. Status of the plan will be included in the Annual IBT Report.
Condition 4	EMC Consideration of Alternative Sources	No reporting necessary.
Condition 5	EMC Consideration of Future Water Demand	No reporting necessary.
Condition 6	Resale of Transferred Water	Included in the Annual IBT Report.
Condition 7	EMC Consideration of Impacts	No reporting necessary.
Condition 8	Intake Access	Included in the Annual IBT Report.

<sup>a</sup> Certificate conditions are described in Section 4.

---

To meet the annual reporting requirements of the Plan, the following sections of this 2016 Annual Report include:

- Status of compliance with IBT certificate limits.
- Summary of historical water withdrawals, reclaimed water usage, wastewater discharges and IBT for the January to December calendar years beginning with 2015.
- Table of calculated daily average of calendar month IBT amounts for the 2016 reporting year.
- Summary of amount of water used during 2014 to 2016 by customers in the Neuse River, Haw River, and Cape Fear River basins for use in determining the distribution of consumptive uses among the basins. Based on the amount of water used in each basin for the previous year, the distribution of consumptive use by basin in the following calendar year will be determined and documented.
- Status of compliance with IBT certificate conditions.

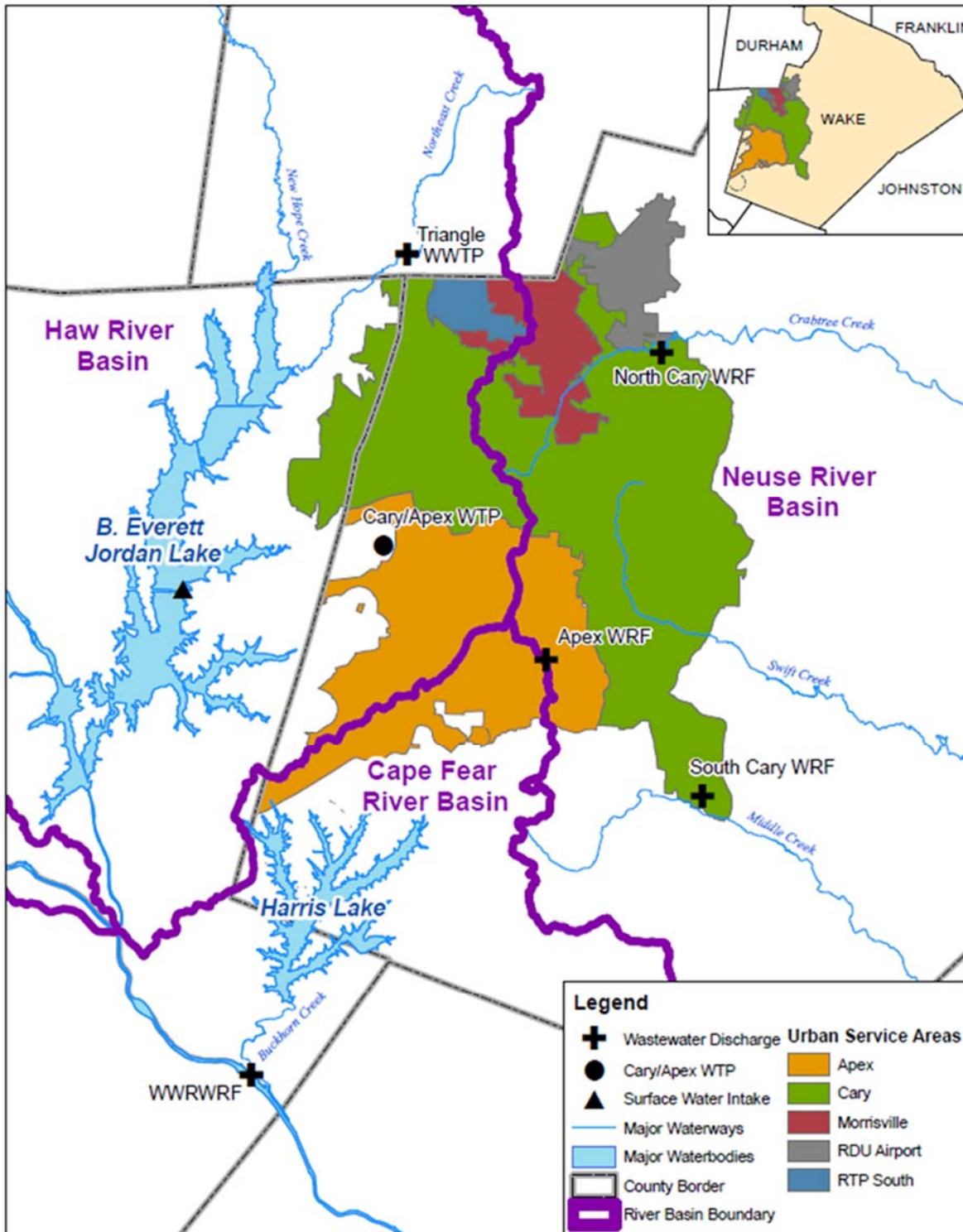
Appendix A includes a table of daily Jordan Lake water supply allocation raw water withdrawals for Cary/Apex, Morrisville and Wake County/RTP South for January 1 to December 31 of the 2016 reporting year.

Appendix B includes a table of calculated daily IBT amounts for January 1 to December 31 of the 2016 reporting year.

SECTION 2

# Withdrawals, Discharges and Interbasin Transfers

The Towns' service areas include Cary, Apex, Morrisville, RDU Airport and RTP South (the Wake County portion of Research Triangle Park). Because the Towns' water system service areas straddle the ridge lines between interbasin transfer (IBT) basins, water is transferred via wastewater discharge, potable water consumptive use, or reclaimed water consumptive use. The combined IBT amount from the communities served is calculated on a daily basis.



## 2.1 IBT Certificate Limits

The Towns' IBT certificate limits transfers to 31 million gallons per day (mgd) from the Haw River basin to the Neuse River basin, and to 2 mgd from the Haw River basin to the Cape Fear River basin, calculated as a daily average of a calendar month.

During calendar year 2016, the Towns were in compliance with the monthly IBT certificate limits. The peak month transfer from the Haw River basin to the Neuse River basin was 15.2 mgd (49% of certificate limit) which occurred during August 2016. The peak month transfer from the Haw River basin to the Cape Fear River basin was 0.07 mgd (4% of certificate limit) which occurred during August 2016.

Daily IBT estimates for the Towns are included in Appendix B.

## 2.2 Summary of Water Withdrawals, Discharges and IBT

The Towns of Cary and Apex are co-owners of the Cary/Apex Water Treatment Facility which has its raw water intake in Jordan Lake. Cary/Apex, Morrisville and Wake County (for the portion of RTP within that county) each hold allocations of Jordan Lake water supply storage. Daily tracking of raw water withdrawals from Jordan Lake for the allocation holders for the period January 1, 2016 through December 31, 2016 is included in Appendix A.

The average daily withdrawal for the Towns was 22.3 mgd during 2016 (Table 2-1). Raw water withdrawals for Cary (including Morrisville and RTP South) and Apex by calendar year beginning with 2015 are summarized in Table 2-1.

Year	Average Annual Withdrawal (mgd)
2015	21.2
2016	22.3

1. Withdrawals from Jordan Lake at the Cary/Apex raw water intake. Includes water use by Apex, Cary, Morrisville and RTP South. Does not include water use by Durham.

The Town of Cary owns and operates the North Cary and South Cary Water Reclamation Facilities (NCWRF and SCWRF) which discharge to Crabtree Creek and Middle Creek, respectively. The Town of Apex owns and operates the Apex Water Reclamation Facility (AWRF) which discharges to Middle Creek. The Towns co-own the Western Wake Regional Water Reclamation Facility (WWRWRF) which discharges to the Cape Fear River. Process water from the CAWTF is discharged to a tributary of Jordan Lake. The Town of Cary also has the ability to discharge wastewater to the Durham County Triangle Wastewater Treatment Plant (Durham Co) which discharges to a tributary of Jordan Lake.

Average annual wastewater discharges for Cary and Apex beginning with 2015, identified by receiving basin, are summarized in Table 2-2.

Year	CAWTF Discharge (mgd)	Wastewater Conveyed to Durham Co. WWTP (mgd)	WWRWRF Discharge (mgd)	NCWRF Discharge (mgd)	SCWRF Discharge (mgd)	AWRF Discharge (mgd)	Total (mgd)
	Haw	Haw	Cape Fear	Neuse	Neuse	Neuse	
2015	3.3	0.02	4.6	6.0	5.3	1.2	20.42
2016	4.0	0	4.9	5.7	5.4	1.1	21.1

The NCWRF and SCWRF produce reclaimed water which is used at each plant, pumped through distribution systems to customers and dispensed in bulk. The WWRWRF produces reclaimed water which is used at the plant



and dispensed in bulk. The Town of Cary purchases reclaimed water from the TWWTP for distribution to customers in its western service area.

Reclaimed water flows for Cary and Apex for calendar years beginning with 2015 are summarized in Table 2-3.

Table 2-3				
Summary of Reclaimed Water Flows				
Year	NCWRF <sup>1</sup> Reclaimed Water (mgd)	SCWRF <sup>2</sup> Reclaimed Water (mgd)	WWWRF <sup>3</sup> Reclaimed Water (mgd)	Reclaimed Water Purchased from Durham Co. TWWTP (mgd)
2015	0.58	0.44	0.55	0.18
2016	0.57	0.38	0.85	0.20
<sup>1</sup> includes distributed and bulk use				
<sup>2</sup> includes distributed, bulk, and plant use				
<sup>3</sup> includes bulk and plant use				

Interbasin transfers for Cary and Apex for each calendar year beginning with 2015 are summarized in Table 2-4. Annual average day withdrawals from the Haw Basin are quantified as (1) returned to Haw subbasin, (2) transferred to Neuse subbasin, (3) returned to Cape Fear subbasin or (4) transferred to Cape Fear subbasin.

Table 2-4					
Summary of Average Annual Interbasin Transfers for Cary and Apex					
		Haw to Neuse		Haw to Cape Fear	
Year	Haw Basin Withdrawal (mgd)	Return to Haw Basin (mgd)	Haw-to-Neuse Interbasin Transfer (mgd)	Return to Cape Fear Basin (mgd)	Haw-to-Cape Fear Interbasin Transfer (mgd)
2015	21.2	4.3	12.9	4.0	0.03
2016	22.3	4.9	12.9	4.5	0

## 2.3 Monthly IBT

Daily IBT is calculated based on a combination of meter data and assumptions, as defined in Section 2 of the Compliance and Monitoring Plan. Daily IBT data are then used to calculate the IBT certificate compliance metric – IBT calculated as the daily average of a calendar month.

Table 2-5 provides daily average interbasin transfers for each calendar month in 2016.

Table 2-5		
Monthly IBT for Calendar Year 2016		
Month	Average Daily IBT from Haw to Neuse (mgd)	Average Daily IBT from Haw to Cape Fear (mgd)
January	11.3	0.01
February	11.2	0.01
March	11.6	0.01
April	11.8	0.02
May	12.8	0.02
June	14.2	0.05
July	14.7	0.06
August	15.2	0.07
September	14.4	0.06
October	13.9	0.04
November	12.2	0.04
December	11.3	0.01
<b>Certificate Limit</b>	31.0	2.0
<b>Maximum % of Limit</b>	49%	4%

SECTION 3

# Consumptive Use by Basin

The average daily consumptive use was 13.3% for the period January 1, 2016 through December 31, 2016. Consumptive use has ranged between 10% and 23.5% since 2000. Historical consumptive use for each calendar year beginning with 2015 is shown in Table 3-1.

<b>Table 3-1</b>			
Historical Consumptive Use for Cary and Apex			
<b>Year</b>	<b>Average Daily Finished Water Demand (mgd)</b>	<b>Average Daily Consumptive Use (mgd)</b>	<b>% Consumptive Use</b>
2015	18.0	2.6	14.4%
2016	18.7	2.5	13.3%

Cary and Apex track historical use by assigning a subbasin to each customer. The distribution of consumptive uses between the Haw, Cape Fear, and Neuse River subbasins for 2016 was estimated based on historical water use in each basin as determined by billing records for Cary and Apex.

During 2016, based on 2015 billing records, it was assumed that 29.7% of water use occurred in the Haw subbasin, 1.4% of water use occurred in the Cape Fear subbasin, and 68.9% of water use occurred in the Neuse River subbasin. During 2017, based on 2016 billing records, it will be assumed that 29.7% of their water use will occur in the Haw subbasin, 1.6% of their water use will occur in the Cape Fear subbasin, and 68.7% of water use will occur in the Neuse River subbasin.

Table 3-2 shows the combined water use for Cary (including Morrisville and RTP South) and Apex, and the percentage water use in the Haw, Cape Fear, and Neuse River subbasins. The table also shows the Haw and Cape Fear use percentages that will be used for 2017 calculations.

<b>TABLE 3-2</b>							
Historic Water Use in the by Subbasin for Cary (including Morrisville and RTP South) and Apex (Annual Average Day)							
		<b>Haw Subbasin</b>		<b>Cape Fear Subbasin</b>		<b>Neuse Subbasin</b>	
<b>Year</b>	<b>Total Billed Water Use (mgd)</b>	<b>Billed Water Use (mgd)</b>	<b>Percent Use</b>	<b>Billed Water Use (mgd)</b>	<b>Percent Use</b>	<b>Billed Water Use (mgd)</b>	<b>Percent Use</b>
2014	14.57	4.27	29.3%	0.17	1.2%	10.13	69.5%
2015	15.06	4.47	29.7%	0.21	1.4%	10.38	68.9%
2016	15.24	4.52	29.7%	0.25	1.6%	10.47	68.7%
2017 percentages to be used for IBT calculations			29.7%		1.6%		



SECTION 4

# Interbasin Transfer Certificate Conditions

---

In accordance with the Compliance and Monitoring Plan, the status of the additional eight conditions that the Towns must meet in order to maintain compliance with the IBT certificate are reported annually. The IBT certificate conditions and their status during the 2016 calendar year are as follows.

1. **Water Conservation Plan** – Within 90 days of receipt of the IBT certificate, the Towns are required to submit a water conservation plan subject to approval by the North Carolina Division of Water Resources (NCDWR) that specifies the water conservation measures that will be implemented by the Towns to ensure the efficient use of the transferred water.

STATUS: The Water Conservation Plan was approved by NCDWR on July 14, 2015 and is available on the Town of Cary website. There were no updates during calendar year 2016.

2. **Drought Management Plan** – Within 90 days of receipt of the IBT certificate, the Towns are required to submit a drought management plan subject to approval by the NCDWR that specifies how the transfer will be managed to protect the source river basin (Haw River basin) during drought conditions or other emergencies that occur within the source river basin.

STATUS: The Drought Management Plan was approved by NCDWR on July 14, 2015 and is available on the Town of Cary website. There was one update approved by NCDWR on August 17, 2015 to update the Town of Cary's approved Water Shortage Response Plan. Those minor updates were to make the Water Shortage Response Plan consistent with changes in the Town's organizational structure, changes in Town Council procedures, and changes in utility billing procedures. There were no updates during calendar year 2016.

3. **Compliance and Monitoring Plan** – Within 90 days of receipt of the IBT certificate, the Towns are required to submit a quarterly compliance and monitoring plan subject to approval by the NCDWR.

STATUS: The Compliance and Monitoring Plan was approved by NCDWR on July 14, 2015 and is available on the Town of Cary website. There were no updates during calendar year 2016.

4. **EMC Consideration of Alternative Sources** – The EMC may reopen and amend the maximum amount of the IBT authorized if it appears that an alternative source of water is available to the Towns within the receiving basin (Neuse River basin).

STATUS: No reporting is necessary.

5. **EMC Consideration of Future Water Demands** – The EMC may reopen and amend the certificate if it is determined that the Towns' actual future water needs are significantly less than the projected water needs at the time the certificate was granted.

STATUS: No reporting is necessary.

6. **Resale of Transferred Water** – The Towns shall not resell the water that would be transferred pursuant to the IBT certificate to another public water system.

STATUS: There were no resales of transferred water by the Towns during calendar year 2016.

7. **EMC Consideration of Impacts** – The EMC may reopen the certificate and amend existing or require new conditions to ensure detrimental impacts are mitigated if environmental impacts are found to be substantially different from those on which the EMC's Findings of Fact were based.

STATUS: No reporting is necessary.

- 
8. **Intake Access** – The Towns shall be required to provide access at their existing intake site to other Jordan Lake water allocation holders that need access to utilize their allocations to the extent that this additional use is determined to be feasible by the NCDWR.

STATUS: The Town of Cary has continued to provide retail water service to RTP South and the Town of Morrisville. Chatham County has continued to access its allocation through the Cary/Apex raw water intake. The City of Durham accessed its Jordan Lake water allocation through the Cary/Apex Water Treatment Facility for 1 day during calendar year 2016.

# Appendices

---

**A Daily Jordan Lake Water Supply Raw Water Withdrawals**

**B Daily IBT Amounts**





**APPENDIX A - Daily Jordan Lake Water Supply Raw Water Withdrawals  
Jordan Lake Water Supply Storage Allocation Tracking  
Cary/Apex, Morrisville, and Wake County/RTP South COMBINED**

Date	Reservoir Level (ft)	Cary/Apex/Morrisville/RTP Water Supply (mgd)	Cary/Apex/Morrisville/RTP Water Supply (cfs)	Inflow to Cary/Apex/Morrisville/RTP (cfs)	Cary/Apex/Morrisville/RTP Storage Level (ac-ft)	Cary/Apex/Morrisville/RTP Storage Level (%)
1/1/2016	233.07	18.24	28.22	28.2	17,862	100.00%
1/2/2016	232.99	17.92	27.72	27.7	17,862	100.00%
1/3/2016	232.66	19.05	29.47	29.5	17,862	100.00%
1/4/2016	232.15	19.72	30.51	30.5	17,862	100.00%
1/5/2016	231.56	20.44	31.62	31.6	17,862	100.00%
1/6/2016	230.96	17.61	27.24	27.2	17,862	100.00%
1/7/2016	230.36	19.49	30.15	30.2	17,862	100.00%
1/8/2016	229.75	18.82	29.11	29.1	17,862	100.00%
1/9/2016	229.14	18.84	29.15	29.1	17,862	100.00%
1/10/2016	228.53	20.14	31.16	31.2	17,862	100.00%
1/11/2016	227.91	17.81	27.55	27.6	17,862	100.00%
1/12/2016	227.24	18.17	28.11	28.1	17,862	100.00%
1/13/2016	226.56	20.08	31.06	31.1	17,862	100.00%
1/14/2016	225.84	19.36	29.95	29.9	17,862	100.00%
1/15/2016	225.13	17.87	27.64	27.6	17,862	100.00%
1/16/2016	224.55	18.48	28.59	28.6	17,862	100.00%
1/17/2016	223.92	18.28	28.28	28.3	17,862	100.00%
1/18/2016	223.26	18.81	29.10	29.1	17,862	100.00%
1/19/2016	222.48	20.18	31.22	31.2	17,862	100.00%
1/20/2016	221.71	18.19	28.14	28.1	17,862	100.00%
1/21/2016	220.83	18.26	28.25	28.2	17,862	100.00%
1/22/2016	220.14	18.68	28.90	28.9	17,862	100.00%
1/23/2016	219.24	19.02	29.42	29.4	17,862	100.00%
1/24/2016	218.32	19.50	30.17	30.2	17,862	100.00%
1/25/2016	217.43	19.48	30.14	30.1	17,862	100.00%
1/26/2016	216.89	18.64	28.84	28.8	17,862	100.00%
1/27/2016	217.00	20.83	32.22	32.2	17,862	100.00%
1/28/2016	217.10	20.44	31.62	31.6	17,862	100.00%
1/29/2016	216.91	18.61	28.79	28.8	17,862	100.00%
1/30/2016	216.67	19.96	30.88	30.9	17,862	100.00%
1/31/2016	216.30	19.75	30.55	30.6	17,862	100.00%
2/1/2016	216.10	20.90	32.33	32.3	17,862	100.00%
2/2/2016	216.23	21.58	33.38	33.4	17,862	100.00%
2/3/2016	216.73	18.10	28.00	28.0	17,862	100.00%
2/4/2016	217.96	19.39	30.00	30.0	17,862	100.00%
2/5/2016	218.45	20.56	31.81	31.8	17,862	100.00%
2/6/2016	218.64	22.50	34.81	34.8	17,862	100.00%
2/7/2016	218.70	17.44	26.98	27.0	17,862	100.00%
2/8/2016	218.65	19.81	30.65	30.6	17,862	100.00%
2/9/2016	218.51	20.37	31.51	31.5	17,862	100.00%
2/10/2016	218.64	19.43	30.06	30.1	17,862	100.00%
2/11/2016	218.71	19.26	29.80	29.8	17,862	100.00%
2/12/2016	218.73	17.68	27.35	27.4	17,862	100.00%
2/13/2016	218.80	19.01	29.41	29.4	17,862	100.00%
2/14/2016	218.83	19.01	29.41	29.4	17,862	100.00%
2/15/2016	218.95	20.03	30.99	31.0	17,862	100.00%

**APPENDIX A - Daily Jordan Lake Water Supply Raw Water Withdrawals  
Jordan Lake Water Supply Storage Allocation Tracking  
Cary/Apex, Morrisville, and Wake County/RTP South COMBINED**

Date	Reservoir Level (ft)	Cary/Apex/Morrisville/RTP Water Supply (mgd)	Cary/Apex/Morrisville/RTP Water Supply (cfs)	Inflow to Cary/Apex/Morrisville/RTP (cfs)	Cary/Apex/Morrisville/RTP Storage Level (ac-ft)	Cary/Apex/Morrisville/RTP Storage Level (%)
2/16/2016	220.40	20.59	31.85	31.9	17,862	100.00%
2/17/2016	221.80	18.05	27.92	27.9	17,862	100.00%
2/18/2016	221.96	18.76	29.02	29.0	17,862	100.00%
2/19/2016	221.39	18.95	29.32	29.3	17,862	100.00%
2/20/2016	220.76	20.09	31.08	31.1	17,862	100.00%
2/21/2016	220.03	19.63	30.37	30.4	17,862	100.00%
2/22/2016	219.33	19.00	29.39	29.4	17,862	100.00%
2/23/2016	219.15	19.89	30.77	30.8	17,862	100.00%
2/24/2016	219.85	18.89	29.22	29.2	17,862	100.00%
2/25/2016	221.05	19.16	29.64	29.6	17,862	100.00%
2/26/2016	221.04	16.46	25.46	25.5	17,862	100.00%
2/27/2016	220.52	16.87	26.10	26.1	17,862	100.00%
2/28/2016	219.85	17.63	27.27	27.3	17,862	100.00%
2/29/2016	219.11	19.77	30.58	30.6	17,862	100.00%
3/1/2016	218.43	18.75	29.01	29.0	17,862	100.00%
3/2/2016	218.02	17.83	27.58	27.6	17,862	100.00%
3/3/2016	217.63	18.40	28.46	28.5	17,862	100.00%
3/4/2016	217.10	18.34	28.37	28.4	17,862	100.00%
3/5/2016	216.61	19.76	30.57	30.6	17,862	100.00%
3/6/2016	216.20	19.39	30.00	30.0	17,862	100.00%
3/7/2016	216.07	20.51	31.73	31.7	17,862	100.00%
3/8/2016	216.16	20.22	31.28	31.3	17,862	100.00%
3/9/2016	216.22	21.72	33.60	33.6	17,862	100.00%
3/10/2016	216.28	21.73	33.62	33.6	17,862	100.00%
3/11/2016	216.37	19.80	30.63	30.6	17,862	100.00%
3/12/2016	216.44	20.56	31.81	31.8	17,862	100.00%
3/13/2016	216.47	21.32	32.98	33.0	17,862	100.00%
3/14/2016	216.75	20.90	32.33	32.3	17,862	100.00%
3/15/2016	217.17	22.14	34.25	34.3	17,862	100.00%
3/16/2016	217.31	21.18	32.77	32.8	17,862	100.00%
3/17/2016	217.31	21.54	33.32	33.3	17,862	100.00%
3/18/2016	217.21	21.61	33.43	33.4	17,862	100.00%
3/19/2016	217.08	20.08	31.06	31.1	17,862	100.00%
3/20/2016	216.91	19.86	30.72	30.7	17,862	100.00%
3/21/2016	216.77	21.28	32.92	32.9	17,862	100.00%
3/22/2016	216.61	21.53	33.31	33.3	17,862	100.00%
3/23/2016	216.50	22.26	34.44	34.4	17,862	100.00%
3/24/2016	216.49	21.82	33.76	33.8	17,862	100.00%
3/25/2016	216.56	19.29	29.84	29.8	17,862	100.00%
3/26/2016	216.57	21.66	33.51	33.5	17,862	100.00%
3/27/2016	216.84	19.36	29.95	29.9	17,862	100.00%
3/28/2016	217.91	20.49	31.70	31.7	17,862	100.00%
3/29/2016	218.45	20.18	31.22	31.2	17,862	100.00%
3/30/2016	218.45	19.69	30.46	30.5	17,862	100.00%
3/31/2016	218.59	19.14	29.61	29.6	17,862	100.00%
4/1/2016	218.65	17.82	27.57	27.6	17,862	100.00%

**APPENDIX A - Daily Jordan Lake Water Supply Raw Water Withdrawals  
Jordan Lake Water Supply Storage Allocation Tracking  
Cary/Apex, Morrisville, and Wake County/RTP South COMBINED**

Date	Reservoir Level (ft)	Cary/Apex/Morrisville/RTP Water Supply (mgd)	Cary/Apex/Morrisville/RTP Water Supply (cfs)	Inflow to Cary/Apex/Morrisville/RTP (cfs)	Cary/Apex/Morrisville/RTP Storage Level (ac-ft)	Cary/Apex/Morrisville/RTP Storage Level (%)
4/2/2016	218.68	16.69	25.82	25.8	17,862	100.00%
4/3/2016	218.77	17.77	27.49	27.5	17,862	100.00%
4/4/2016	218.79	19.67	30.43	30.4	17,862	100.00%
4/5/2016	218.84	16.15	24.98	25.0	17,862	100.00%
4/6/2016	218.80	17.80	27.54	27.5	17,862	100.00%
4/7/2016	218.71	18.03	27.89	27.9	17,862	100.00%
4/8/2016	218.62	19.23	29.75	29.7	17,862	100.00%
4/9/2016	218.51	18.97	29.35	29.3	17,862	100.00%
4/10/2016	218.35	21.70	33.57	33.6	17,862	100.00%
4/11/2016	218.25	21.51	33.28	33.3	17,862	100.00%
4/12/2016	218.30	20.92	32.36	32.4	17,862	100.00%
4/13/2016	218.23	19.71	30.49	30.5	17,862	100.00%
4/14/2016	218.16	20.16	31.19	31.2	17,862	100.00%
4/15/2016	218.06	21.63	33.46	33.5	17,862	100.00%
4/16/2016	217.90	20.25	31.33	31.3	17,862	100.00%
4/17/2016	217.67	22.24	34.41	34.4	17,862	100.00%
4/18/2016	217.32	22.00	34.03	34.0	17,862	100.00%
4/19/2016	216.97	22.70	35.12	35.1	17,862	100.00%
4/20/2016	216.69	23.57	36.46	36.5	17,862	100.00%
4/21/2016	216.49	23.91	36.99	37.0	17,862	100.00%
4/22/2016	216.51	23.30	36.05	36.0	17,862	100.00%
4/23/2016	216.66	19.61	30.34	30.3	17,862	100.00%
4/24/2016	216.72	22.06	34.13	34.1	17,862	100.00%
4/25/2016	216.64	21.97	33.99	34.0	17,862	100.00%
4/26/2016	216.56	24.39	37.73	37.7	17,862	100.00%
4/27/2016	216.56	22.83	35.32	35.3	17,862	100.00%
4/28/2016	216.68	23.33	36.09	36.1	17,862	100.00%
4/29/2016	216.88	20.77	32.13	32.1	17,862	100.00%
4/30/2016	216.89	22.69	35.10	35.1	17,862	100.00%
5/1/2016	216.87	20.26	31.34	31.3	17,862	100.00%
5/2/2016	216.88	21.78	33.69	33.7	17,862	100.00%
5/3/2016	217.46	19.99	30.92	30.9	17,862	100.00%
5/4/2016	218.41	24.48	37.87	37.9	17,862	100.00%
5/5/2016	218.82	20.65	31.95	31.9	17,862	100.00%
5/6/2016	219.70	19.90	30.79	30.8	17,862	100.00%
5/7/2016	220.43	20.54	31.78	31.8	17,862	100.00%
5/8/2016	220.71	21.58	33.38	33.4	17,862	100.00%
5/9/2016	220.64	22.80	35.27	35.3	17,862	100.00%
5/10/2016	220.43	25.00	38.68	38.7	17,862	100.00%
5/11/2016	220.10	22.10	34.19	34.2	17,862	100.00%
5/12/2016	219.68	25.35	39.22	39.2	17,862	100.00%
5/13/2016	219.39	22.28	34.47	34.5	17,862	100.00%
5/14/2016	219.16	21.74	33.63	33.6	17,862	100.00%
5/15/2016	218.60	21.95	33.96	34.0	17,862	100.00%
5/16/2016	218.09	23.15	35.81	35.8	17,862	100.00%
5/17/2016	217.57	23.28	36.01	36.0	17,862	100.00%

**APPENDIX A - Daily Jordan Lake Water Supply Raw Water Withdrawals  
Jordan Lake Water Supply Storage Allocation Tracking  
Cary/Apex, Morrisville, and Wake County/RTP South COMBINED**

Date	Reservoir Level (ft)	Cary/Apex/Morrisville/RTP Water Supply (mgd)	Cary/Apex/Morrisville/RTP Water Supply (cfs)	Inflow to Cary/Apex/Morrisville/RTP (cfs)	Cary/Apex/Morrisville/RTP Storage Level (ac-ft)	Cary/Apex/Morrisville/RTP Storage Level (%)
5/18/2016	217.12	22.37	34.61	34.6	17,862	100.00%
5/19/2016	216.85	21.08	32.61	32.6	17,862	100.00%
5/20/2016	216.59	22.03	34.08	34.1	17,862	100.00%
5/21/2016	216.52	20.12	31.13	31.1	17,862	100.00%
5/22/2016	216.81	21.14	32.70	32.7	17,862	100.00%
5/23/2016	216.96	21.84	33.79	33.8	17,862	100.00%
5/24/2016	216.92	22.68	35.09	35.1	17,862	100.00%
5/25/2016	216.80	23.28	36.01	36.0	17,862	100.00%
5/26/2016	216.77	24.11	37.30	37.3	17,862	100.00%
5/27/2016	216.70	26.87	41.57	41.6	17,862	100.00%
5/28/2016	216.55	23.28	36.01	36.0	17,862	100.00%
5/29/2016	216.61	21.09	32.63	32.6	17,862	100.00%
5/30/2016	216.67	20.03	30.99	31.0	17,862	100.00%
5/31/2016	216.64	22.68	35.09	35.1	17,862	100.00%
6/1/2016	216.52	21.90	33.88	33.9	17,862	100.00%
6/2/2016	216.46	23.49	36.34	36.3	17,862	100.00%
6/3/2016	216.43	24.53	37.95	37.9	17,862	100.00%
6/4/2016	216.48	22.20	34.34	34.3	17,862	100.00%
6/5/2016	216.74	22.65	35.04	35.0	17,862	100.00%
6/6/2016	216.82	21.80	33.72	33.7	17,862	100.00%
6/7/2016	216.83	22.68	35.09	35.1	17,862	100.00%
6/8/2016	216.54	23.16	35.83	35.8	17,862	100.00%
6/9/2016	216.35	24.45	37.82	37.8	17,862	100.00%
6/10/2016	216.35	26.31	40.70	40.7	17,862	100.00%
6/11/2016	216.23	25.41	39.31	39.3	17,862	100.00%
6/12/2016	216.22	27.20	42.08	42.1	17,862	100.00%
6/13/2016	216.15	23.60	36.51	36.5	17,862	100.00%
6/14/2016	216.13	27.27	42.19	42.2	17,862	100.00%
6/15/2016	216.17	28.67	44.35	44.4	17,862	100.00%
6/16/2016	216.19	26.91	41.62	41.6	17,862	100.00%
6/17/2016	216.35	23.84	36.88	36.9	17,862	100.00%
6/18/2016	216.27	24.44	37.81	37.8	17,862	100.00%
6/19/2016	216.24	23.25	35.97	36.0	17,862	100.00%
6/20/2016	216.20	24.61	38.07	38.1	17,862	100.00%
6/21/2016	216.15	29.29	45.31	45.3	17,862	100.00%
6/22/2016	216.13	25.56	39.54	39.5	17,862	100.00%
6/23/2016	216.09	26.61	41.17	41.2	17,862	100.00%
6/24/2016	216.21	23.20	35.89	35.9	17,862	100.00%
6/25/2016	216.30	25.11	38.85	38.8	17,862	100.00%
6/26/2016	216.33	26.16	40.47	40.5	17,862	100.00%
6/27/2016	216.30	24.84	38.43	38.4	17,862	100.00%
6/28/2016	216.40	23.09	35.72	35.7	17,862	100.00%
6/29/2016	216.75	24.65	38.13	38.1	17,862	100.00%
6/30/2016	216.83	22.56	34.90	34.9	17,862	100.00%
7/1/2016	216.86	23.81	36.83	36.8	17,862	100.00%
7/2/2016	216.85	22.77	35.23	35.2	17,862	100.00%

**APPENDIX A - Daily Jordan Lake Water Supply Raw Water Withdrawals  
Jordan Lake Water Supply Storage Allocation Tracking  
Cary/Apex, Morrisville, and Wake County/RTP South COMBINED**

Date	Reservoir Level (ft)	Cary/Apex/Morrisville/RTP Water Supply (mgd)	Cary/Apex/Morrisville/RTP Water Supply (cfs)	Inflow to Cary/Apex/Morrisville/RTP (cfs)	Cary/Apex/Morrisville/RTP Storage Level (ac-ft)	Cary/Apex/Morrisville/RTP Storage Level (%)
7/3/2016	217.08	20.86	32.27	32.3	17,862	100.00%
7/4/2016	217.40	20.87	32.29	32.3	17,862	100.00%
7/5/2016	217.60	23.54	36.42	36.4	17,862	100.00%
7/6/2016	217.52	23.62	36.54	36.5	17,862	100.00%
7/7/2016	217.37	24.32	37.62	37.6	17,862	100.00%
7/8/2016	217.11	24.92	38.55	38.6	17,862	100.00%
7/9/2016	217.04	23.72	36.69	36.7	17,862	100.00%
7/10/2016	216.94	24.39	37.73	37.7	17,862	100.00%
7/11/2016	216.78	24.03	37.17	37.2	17,862	100.00%
7/12/2016	216.71	24.75	38.29	38.3	17,862	100.00%
7/13/2016	216.69	27.67	42.81	42.8	17,862	100.00%
7/14/2016	216.63	26.28	40.66	40.7	17,862	100.00%
7/15/2016	216.59	26.69	41.29	41.3	17,862	100.00%
7/16/2016	216.71	23.61	36.52	36.5	17,862	100.00%
7/17/2016	217.49	23.00	35.58	35.6	17,862	100.00%
7/18/2016	217.59	23.77	36.77	36.8	17,862	100.00%
7/19/2016	217.26	25.19	38.97	39.0	17,862	100.00%
7/20/2016	216.87	24.68	38.18	38.2	17,862	100.00%
7/21/2016	216.54	28.06	43.41	43.4	17,862	100.00%
7/22/2016	216.37	27.75	42.93	42.9	17,862	100.00%
7/23/2016	216.35	27.72	42.88	42.9	17,862	100.00%
7/24/2016	216.30	25.27	39.09	39.1	17,862	100.00%
7/25/2016	216.20	26.80	41.46	41.5	17,862	100.00%
7/26/2016	216.35	30.10	46.56	46.6	17,862	100.00%
7/27/2016	216.42	23.66	36.60	36.6	17,862	100.00%
7/28/2016	216.35	25.48	39.42	39.4	17,862	100.00%
7/29/2016	216.31	27.27	42.19	42.2	17,862	100.00%
7/30/2016	216.25	27.30	42.23	42.2	17,862	100.00%
7/31/2016	216.28	27.01	41.78	41.8	17,862	100.00%
8/1/2016	216.95	22.29	34.48	34.5	17,862	100.00%
8/2/2016	217.07	26.40	40.84	40.8	17,862	100.00%
8/3/2016	217.22	23.20	35.89	35.9	17,862	100.00%
8/4/2016	217.19	26.15	40.45	40.5	17,862	100.00%
8/5/2016	217.20	22.68	35.09	35.1	17,862	100.00%
8/6/2016	217.14	22.46	34.75	34.7	17,862	100.00%
8/7/2016	216.94	23.49	36.34	36.3	17,862	100.00%
8/8/2016	216.84	25.62	39.63	39.6	17,862	100.00%
8/9/2016	216.75	23.82	36.85	36.8	17,862	100.00%
8/10/2016	216.54	25.55	39.53	39.5	17,862	100.00%
8/11/2016	216.32	25.97	40.18	40.2	17,862	100.00%
8/12/2016	216.33	25.78	39.88	39.9	17,862	100.00%
8/13/2016	216.24	25.73	39.80	39.8	17,862	100.00%
8/14/2016	216.26	27.49	42.53	42.5	17,862	100.00%
8/15/2016	216.23	25.68	39.73	39.7	17,862	100.00%
8/16/2016	216.22	28.97	44.82	44.8	17,862	100.00%
8/17/2016	216.16	26.62	41.18	41.2	17,862	100.00%

**APPENDIX A - Daily Jordan Lake Water Supply Raw Water Withdrawals  
Jordan Lake Water Supply Storage Allocation Tracking  
Cary/Apex, Morrisville, and Wake County/RTP South COMBINED**

Date	Reservoir Level (ft)	Cary/Apex/Morrisville/RTP Water Supply (mgd)	Cary/Apex/Morrisville/RTP Water Supply (cfs)	Inflow to Cary/Apex/Morrisville/RTP (cfs)	Cary/Apex/Morrisville/RTP Storage Level (ac-ft)	Cary/Apex/Morrisville/RTP Storage Level (%)
8/18/2016	216.10	27.52	42.57	42.6	17,862	100.00%
8/19/2016	216.12	29.23	45.22	45.2	17,862	100.00%
8/20/2016	216.08	24.30	37.59	37.6	17,862	100.00%
8/21/2016	216.04	26.82	41.49	23.9	17,862	100.00%
8/22/2016	216.01	24.49	37.89	37.9	17,862	100.00%
8/23/2016	215.94	26.64	41.21	3.0	17,786	99.58%
8/24/2016	215.89	27.68	42.82	41.5	17,784	99.56%
8/25/2016	215.83	29.06	44.96	39.5	17,773	99.50%
8/26/2016	215.77	28.89	44.69	39.1	17,762	99.44%
8/27/2016	215.74	27.83	43.05	93.7	17,862	100.00%
8/28/2016	215.63	26.52	41.03	-23.9	17,733	99.28%
8/29/2016	215.61	24.67	38.16	76.1	17,808	99.70%
8/30/2016	215.57	29.28	45.30	72.3	17,862	100.00%
8/31/2016	215.47	28.11	43.49	-15.0	17,746	99.35%
9/1/2016	215.44	26.53	41.04	68.7	17,801	99.66%
9/2/2016	215.58	24.40	37.75	68.6	17,862	100.00%
9/3/2016	215.48	21.51	33.28	-44.0	17,709	99.14%
9/4/2016	215.50	22.57	34.92	48.0	17,735	99.29%
9/5/2016	215.47	21.10	32.64	4.3	17,678	98.97%
9/6/2016	215.44	25.94	40.13	8.5	17,616	98.62%
9/7/2016	215.40	27.23	42.12	16.7	17,565	98.34%
9/8/2016	215.34	27.25	42.16	8.4	17,498	97.96%
9/9/2016	215.27	27.22	42.11	3.5	17,422	97.54%
9/10/2016	215.19	26.12	40.41	-6.9	17,328	97.01%
9/11/2016	215.14	27.43	42.43	25.3	17,294	96.82%
9/12/2016	215.04	23.90	36.97	-22.0	17,177	96.17%
9/13/2016	214.95	28.77	44.51	-10.6	17,068	95.55%
9/14/2016	214.89	27.34	42.29	15.6	17,015	95.26%
9/15/2016	214.84	26.61	41.17	25.1	16,983	95.08%
9/16/2016	214.72	28.98	44.83	-31.6	16,832	94.23%
9/17/2016	214.64	27.52	42.57	2.8	16,753	93.79%
9/18/2016	214.58	27.48	42.51	19.5	16,707	93.53%
9/19/2016	214.63	23.94	37.04	133.6	16,899	94.61%
9/20/2016	214.81	23.37	36.15	513.6	17,845	99.91%
9/21/2016	214.94	19.68	30.44	38.8	17,862	100.00%
9/22/2016	215.04	25.58	39.57	39.6	17,862	100.00%
9/23/2016	215.05	22.16	34.28	34.3	17,862	100.00%
9/24/2016	215.04	22.22	34.37	34.4	17,862	100.00%
9/25/2016	215.02	24.11	37.30	37.3	17,862	100.00%
9/26/2016	215.02	24.43	37.79	37.8	17,862	100.00%
9/27/2016	215.02	24.48	37.87	37.9	17,862	100.00%
9/28/2016	215.15	24.30	37.59	37.6	17,862	100.00%
9/29/2016	216.64	21.86	33.82	33.8	17,862	100.00%
9/30/2016	217.10	21.32	32.98	33.0	17,862	100.00%
10/1/2016	217.26	24.00	37.13	37.1	17,862	100.00%
10/2/2016	217.32	24.25	37.51	37.5	17,862	100.00%

**APPENDIX A - Daily Jordan Lake Water Supply Raw Water Withdrawals  
Jordan Lake Water Supply Storage Allocation Tracking  
Cary/Apex, Morrisville, and Wake County/RTP South COMBINED**

Date	Reservoir Level (ft)	Cary/Apex/Morrisville/RTP Water Supply (mgd)	Cary/Apex/Morrisville/RTP Water Supply (cfs)	Inflow to Cary/Apex/Morrisville/RTP (cfs)	Cary/Apex/Morrisville/RTP Storage Level (ac-ft)	Cary/Apex/Morrisville/RTP Storage Level (%)
10/3/2016	217.24	22.98	35.55	35.6	17,862	100.00%
10/4/2016	217.08	25.89	40.05	40.1	17,862	100.00%
10/5/2016	217.01	24.72	38.24	38.2	17,862	100.00%
10/6/2016	216.97	25.62	39.63	39.6	17,862	100.00%
10/7/2016	216.99	22.46	34.75	34.7	17,862	100.00%
10/8/2016	221.26	20.55	31.79	31.8	17,862	100.00%
10/9/2016	225.57	21.27	32.90	32.9	17,862	100.00%
10/10/2016	226.39	21.29	32.94	32.9	17,862	100.00%
10/11/2016	226.70	23.77	36.77	36.8	17,862	100.00%
10/12/2016	226.85	23.91	36.99	37.0	17,862	100.00%
10/13/2016	226.97	23.82	36.85	36.8	17,862	100.00%
10/14/2016	226.88	24.11	37.30	37.3	17,862	100.00%
10/15/2016	226.63	22.46	34.75	34.7	17,862	100.00%
10/16/2016	226.37	24.03	37.17	37.2	17,862	100.00%
10/17/2016	225.73	23.17	35.84	35.8	17,862	100.00%
10/18/2016	224.50	25.10	38.82	38.8	17,862	100.00%
10/19/2016	223.32	23.54	36.42	36.4	17,862	100.00%
10/20/2016	222.07	26.65	41.23	41.2	17,862	100.00%
10/21/2016	220.81	22.57	34.92	34.9	17,862	100.00%
10/22/2016	219.59	22.51	34.82	34.8	17,862	100.00%
10/23/2016	218.13	23.83	36.87	36.9	17,862	100.00%
10/24/2016	217.23	23.91	36.99	37.0	17,862	100.00%
10/25/2016	216.81	25.19	38.97	39.0	17,862	100.00%
10/26/2016	216.54	25.73	39.80	39.8	17,862	100.00%
10/27/2016	216.46	23.08	35.70	35.7	17,862	100.00%
10/28/2016	216.44	25.38	39.26	39.3	17,862	100.00%
10/29/2016	216.39	24.29	37.58	37.6	17,862	100.00%
10/30/2016	216.36	25.54	39.51	39.5	17,862	100.00%
10/31/2016	216.34	23.58	36.48	36.5	17,862	100.00%
11/1/2016	216.31	22.01	34.05	34.0	17,862	100.00%
11/2/2016	216.27	25.27	39.09	39.1	17,862	100.00%
11/3/2016	216.25	23.64	36.57	36.6	17,862	100.00%
11/4/2016	216.25	21.28	32.92	32.9	17,862	100.00%
11/5/2016	216.20	22.71	35.13	35.1	17,862	100.00%
11/6/2016	216.18	23.21	35.91	35.9	17,862	100.00%
11/7/2016	216.14	20.68	31.99	32.0	17,862	100.00%
11/8/2016	216.11	21.27	32.90	32.9	17,862	100.00%
11/9/2016	216.11	20.53	31.76	31.8	17,862	100.00%
11/10/2016	216.05	20.67	31.98	-7.3	17,862	100.00%
11/11/2016	216.04	20.23	31.30	31.3	17,862	100.00%
11/12/2016	215.99	21.51	33.28	3.4	17,803	99.67%
11/13/2016	215.92	19.74	30.54	16.3	17,774	99.51%
11/14/2016	215.96	20.21	31.26	75.4	17,862	100.00%
11/15/2016	215.92	21.03	32.53	8.3	17,814	99.73%
11/16/2016	215.90	23.11	35.75	60.0	17,862	100.00%
11/17/2016	215.87	20.25	31.33	31.3	17,862	100.00%

**APPENDIX A - Daily Jordan Lake Water Supply Raw Water Withdrawals  
Jordan Lake Water Supply Storage Allocation Tracking  
Cary/Apex, Morrisville, and Wake County/RTP South COMBINED**

Date	Reservoir Level (ft)	Cary/Apex/Morrisville/RTP Water Supply (mgd)	Cary/Apex/Morrisville/RTP Water Supply (cfs)	Inflow to Cary/Apex/Morrisville/RTP (cfs)	Cary/Apex/Morrisville/RTP Storage Level (ac-ft)	Cary/Apex/Morrisville/RTP Storage Level (%)
11/18/2016	215.83	20.80	32.18	21.7	17,841	99.88%
11/19/2016	215.81	21.81	33.74	44.2	17,862	100.00%
11/20/2016	215.75	21.26	32.89	-3.7	17,789	99.59%
11/21/2016	215.73	20.46	31.65	47.5	17,821	99.77%
11/22/2016	215.68	22.23	34.39	6.3	17,765	99.46%
11/23/2016	215.66	20.15	31.17	59.7	17,822	99.77%
11/24/2016	215.63	21.44	33.17	44.1	17,843	99.90%
11/25/2016	215.59	18.29	28.29	22.1	17,831	99.83%
11/26/2016	215.56	19.86	30.72	42.9	17,855	99.96%
11/27/2016	215.53	20.12	31.13	34.6	17,862	100.00%
11/28/2016	215.49	20.91	32.35	22.0	17,842	99.89%
11/29/2016	215.49	19.60	30.32	40.6	17,862	100.00%
11/30/2016	215.47	20.76	32.12	32.1	17,862	100.00%
12/1/2016	215.46	20.85	32.25	32.3	17,862	100.00%
12/2/2016	215.43	20.08	31.06	31.1	17,862	100.00%
12/3/2016	215.43	18.53	28.67	28.7	17,862	100.00%
12/4/2016	215.44	19.46	30.10	30.1	17,862	100.00%
12/5/2016	215.47	20.91	32.35	32.3	17,862	100.00%
12/6/2016	215.52	20.04	31.00	31.0	17,862	100.00%
12/7/2016	215.58	18.60	28.77	28.8	17,862	100.00%
12/8/2016	215.67	19.64	30.38	30.4	17,862	100.00%
12/9/2016	215.67	19.30	29.86	29.9	17,862	100.00%
12/10/2016	215.67	18.71	28.94	28.9	17,862	100.00%
12/11/2016	215.70	19.74	30.54	30.5	17,862	100.00%
12/12/2016	215.71	19.44	30.07	30.1	17,862	100.00%
12/13/2016	215.70	21.32	32.98	33.0	17,862	100.00%
12/14/2016	215.70	19.83	30.68	30.7	17,862	100.00%
12/15/2016	215.71	19.75	30.55	30.6	17,862	100.00%
12/16/2016	215.64	19.90	30.79	-20.1	17,761	99.43%
12/17/2016	215.65	20.13	31.14	71.4	17,841	99.88%
12/18/2016	215.66	19.69	30.46	41.1	17,862	100.00%
12/19/2016	215.70	21.50	33.26	33.3	17,862	100.00%
12/20/2016	215.68	20.14	31.16	31.2	17,862	100.00%
12/21/2016	215.68	19.62	30.35	30.4	17,862	100.00%
12/22/2016	215.72	19.18	29.67	29.7	17,862	100.00%
12/23/2016	215.67	21.01	32.50	-1.3	17,795	99.62%
12/24/2016	215.63	18.91	29.25	8.2	17,753	99.39%
12/25/2016	215.64	17.65	27.30	82.2	17,862	100.00%
12/26/2016	215.63	16.60	25.68	25.7	17,862	100.00%
12/27/2016	215.63	18.73	28.98	29.0	17,862	100.00%
12/28/2016	215.61	19.97	30.89	30.9	17,862	100.00%
12/29/2016	215.61	18.44	28.53	28.5	17,862	100.00%
12/30/2016	215.63	18.84	29.15	29.1	17,862	100.00%
12/31/2016	215.62	18.27	28.26	28.3	17,862	100.00%



APPENDIX B - Daily IBT Amounts

	(1)	(2)	(3)	(4)	(5)=1+2 +3+4	(6)	(7)	(8)	(9)	(10)	(11)	(12)	(13)	(14)	(15)	(16)=6+7+1 2+13	(17)=8+9+ 14	(18)=10+ 11+15	(19)=16+1 7+18	(20)=8+9	(21)=18- 2-3-4
	Water Withdrawal/Purchase (mgd)					Consumptive Use (mgd)						Water Use Discharged as Wastewater (mgd)				Total Returned/Used in Each Basin (mgd)				Interbasin Transfer (mgd)	
	Jordan Lake Withdrawal	Neuse Basin Purchase			Total System Use	Haw		Cape Fear		Neuse		Haw		Cape Fear	Neuse	Haw	Cape Fear	Neuse	Total for All Basins	Haw to Cape Fear	Haw to Neuse
	Haw	Raleigh	Durham	Durham Co. Reclaimed		Potable	WRF Reuse	Potable	WRF Reuse	Potable	WRF Reuse	WTP Process Water	WRF	WRF	Total WRFs						
1/1/2016	18.24	0.00	0.00	0.116	18.36	0.229	0.116	0.011	0.000	0.532	0.394	2.91	0.00	3.74	10.43	3.26	3.75	11.35	18.36	0.011	11.24
1/2/2016	17.92	0.00	0.00	0.119	18.04	0.219	0.119	0.010	0.000	0.507	0.409	3.31	0.00	3.77	9.70	3.65	3.78	10.62	18.04	0.010	10.50
1/3/2016	19.05	0.00	0.00	0.117	19.17	0.231	0.117	0.011	0.000	0.537	0.223	3.59	0.00	4.13	10.33	3.94	4.14	11.09	19.17	0.011	10.97
1/4/2016	19.72	0.00	0.00	0.119	19.84	0.255	0.119	0.012	0.000	0.590	0.427	2.70	0.00	4.27	11.47	3.07	4.28	12.49	19.84	0.012	12.37
1/5/2016	20.44	0.00	0.00	0.112	20.55	0.239	0.112	0.011	0.000	0.555	0.422	4.43	0.00	4.12	10.66	4.78	4.13	11.64	20.55	0.011	11.52
1/6/2016	17.61	0.00	0.00	0.097	17.71	0.211	0.097	0.010	0.000	0.489	0.455	3.52	0.00	3.58	9.35	3.83	3.59	10.29	17.71	0.010	10.19
1/7/2016	19.49	0.00	0.00	0.087	19.58	0.242	0.087	0.011	0.000	0.562	0.416	3.27	0.00	3.93	11.06	3.60	3.94	12.03	19.58	0.011	11.95
1/8/2016	18.82	0.00	0.00	0.050	18.87	0.236	0.050	0.011	0.000	0.547	0.423	2.99	0.00	3.91	10.70	3.28	3.92	11.67	18.87	0.011	11.62
1/9/2016	18.84	0.00	0.00	0.065	18.91	0.224	0.065	0.011	0.000	0.519	0.393	3.84	0.00	3.95	9.90	4.13	3.96	10.81	18.91	0.011	10.75
1/10/2016	20.14	0.00	0.00	0.081	20.22	0.246	0.081	0.012	0.000	0.571	0.419	3.66	0.00	4.37	10.86	3.99	4.38	11.85	20.22	0.012	11.77
1/11/2016	17.81	0.00	0.00	0.059	17.87	0.218	0.059	0.010	0.000	0.506	0.407	3.19	0.00	3.76	9.72	3.47	3.77	10.63	17.87	0.010	10.57
1/12/2016	18.17	0.00	0.00	0.111	18.28	0.227	0.111	0.011	0.000	0.526	0.430	3.02	0.00	3.84	10.11	3.36	3.85	11.07	18.28	0.011	10.96
1/13/2016	20.08	0.00	0.00	0.113	20.19	0.236	0.113	0.011	0.000	0.548	0.408	4.28	0.00	4.01	10.59	4.63	4.02	11.54	20.19	0.011	11.43
1/14/2016	19.36	0.00	0.00	0.129	19.49	0.244	0.129	0.011	0.000	0.565	0.420	3.08	0.00	4.13	10.91	3.45	4.14	11.89	19.49	0.011	11.76
1/15/2016	17.87	0.00	0.00	0.072	17.94	0.211	0.072	0.010	0.000	0.490	0.410	3.72	0.00	3.49	9.54	4.00	3.50	10.44	17.94	0.010	10.37
1/16/2016	18.48	0.00	0.00	0.080	18.56	0.231	0.080	0.011	0.000	0.535	0.411	3.03	0.00	3.97	10.29	3.34	3.98	11.23	18.56	0.011	11.15
1/17/2016	18.28	0.00	0.00	0.061	18.34	0.218	0.061	0.010	0.000	0.506	0.403	3.65	0.00	3.74	9.75	3.93	3.75	10.66	18.34	0.010	10.60
1/18/2016	18.81	0.00	0.00	0.061	18.87	0.244	0.061	0.012	0.000	0.566	0.423	2.44	0.00	4.19	10.93	2.75	4.20	11.92	18.87	0.012	11.86
1/19/2016	20.18	0.00	0.00	0.048	20.23	0.242	0.048	0.011	0.000	0.561	0.226	3.93	0.00	4.15	11.06	4.22	4.16	11.85	20.23	0.011	11.80
1/20/2016	18.19	0.00	0.00	0.074	18.26	0.224	0.074	0.011	0.000	0.520	0.496	3.18	0.00	3.61	10.15	3.48	3.62	11.17	18.26	0.011	11.10
1/21/2016	18.26	0.00	0.00	0.102	18.36	0.218	0.102	0.010	0.000	0.506	0.369	3.68	0.00	3.68	9.80	4.00	3.69	10.68	18.36	0.010	10.57
1/22/2016	18.68	0.00	0.00	0.043	18.72	0.222	0.043	0.010	0.000	0.516	0.454	3.75	0.00	3.60	10.13	4.02	3.61	11.10	18.72	0.010	11.06
1/23/2016	19.02	0.00	0.00	0.051	19.07	0.233	0.051	0.011	0.000	0.541	0.443	3.38	0.00	4.00	10.41	3.66	4.01	11.39	19.07	0.011	11.34
1/24/2016	19.50	0.00	0.00	0.059	19.56	0.242	0.059	0.011	0.000	0.561	0.563	3.27	0.00	4.22	10.64	3.57	4.23	11.76	19.56	0.011	11.70
1/25/2016	19.48	0.00	0.00	0.063	19.54	0.220	0.063	0.010	0.000	0.510	0.567	4.75	0.00	3.61	9.81	5.03	3.62	10.89	19.54	0.010	10.83
1/26/2016	18.64	0.00	0.00	0.070	18.71	0.236	0.070	0.011	0.000	0.548	0.272	2.80	0.00	3.82	10.95	3.11	3.83	11.77	18.71	0.011	11.70
1/27/2016	20.83	0.00	0.31	0.066	21.21	0.251	0.066	0.012	0.000	0.582	0.370	4.32	0.00	3.97	11.63	4.64	3.99	12.59	21.21	0.012	12.21
1/28/2016	20.44	0.00	0.00	0.093	20.53	0.232	0.093	0.011	0.000	0.539	0.357	4.90	0.00	3.70	10.71	5.23	3.71	11.60	20.53	0.011	11.51
1/29/2016	18.61	0.00	0.00	0.073	18.68	0.231	0.073	0.011	0.000	0.537	0.376	3.10	0.00	3.76	10.60	3.40	3.77	11.51	18.68	0.011	11.44
1/30/2016	19.96	0.00	0.00	0.078	20.04	0.223	0.078	0.010	0.000	0.516	0.381	5.05	0.00	3.75	10.03	5.35	3.76	10.93	20.04	0.010	10.85
1/31/2016	19.75	0.00	0.00	0.087	19.84	0.253	0.087	0.012	0.000	0.586	0.395	2.82	0.00	4.77	10.92	3.16	4.78	11.90	19.84	0.012	11.81
2/1/2016	20.90	0.00	0.00	0.093	20.99	0.249	0.093	0.012	0.000	0.578	0.397	4.21	0.00	4.29	11.17	4.55	4.30	12.14	20.99	0.012	12.05
2/2/2016	21.58	0.00	0.00	0.076	21.66	0.262	0.076	0.012	0.000	0.608	0.410	4.02	0.00	4.51	11.76	4.36	4.52	12.78	21.66	0.012	12.70
2/3/2016	18.10	0.00	0.00	0.073	18.17	0.215	0.073	0.010	0.000	0.499	0.371	3.69	0.00	3.30	10.02	3.98	3.31	10.89	18.17	0.010	10.81
2/4/2016	19.39	0.00	0.00	0.096	19.49	0.235	0.096	0.011	0.000	0.546	0.648	3.64	0.00	3.57	10.74	3.97	3.58	11.93	19.49	0.011	11.84
2/5/2016	20.56	0.00	0.00	0.199	20.76	0.261	0.199	0.012	0.000	0.606	0.623	3.18	0.00	3.89	11.99	3.64	3.90	13.22	20.76	0.012	13.02
2/6/2016	22.50	0.00	0.00	0.207	22.71	0.251	0.207	0.012	0.000	0.583	0.614	5.78	0.00	4.08	11.18	6.24	4.09	12.37	22.71	0.012	12.17
2/7/2016	17.44	0.00	0.00	0.278	17.72	0.214	0.278	0.010	0.000	0.497	1.185	3.29	0.00	3.35	8.90	3.78	3.36	10.58	17.72	0.010	10.30
2/8/2016	19.81	0.00	0.00	0.398	20.21	0.249	0.398	0.012	0.000	0.579	1.100	3.41	0.00	3.90	10.56	4.06	3.91	12.24	20.21	0.012	11.84
2/9/2016	20.37	0.00	0.00	0.389	20.76	0.249	0.389	0.012	0.000	0.579	-0.003	3.96	0.00	4.05	11.52	4.60	4.06	12.10	20.76	0.012	11.71
2/10/2016	19.43	0.00	0.00	0.029	19.46	0.225	0.029	0.011	0.000	0.523	0.000	4.29	0.00	3.56	10.82	4.54	3.57	11.34	19.46	0.011	11.31

APPENDIX B – DAILY IBT AMOUNTS

	(1)	(2)	(3)	(4)	(5)=1+2 +3+4	(6)	(7)	(8)	(9)	(10)	(11)	(12)	(13)	(14)	(15)	(16)=6+7+1 2+13	(17)=8+9+ 14	(18)=10+ 11+15	(19)=16+1 7+18	(20)=8+9	(21)=18- 2-3-4
	Water Withdrawal/Purchase (mgd)				Consumptive Use (mgd)							Water Use Discharged as Wastewater (mgd)				Total Returned/Used in Each Basin (mgd)				Interbasin Transfer (mgd)	
	Jordan Lake Withdrawal	Neuse Basin Purchase			Total System Use	Haw		Cape Fear		Neuse		Haw		Cape Fear	Neuse	Haw	Cape Fear	Neuse	Total for All Basins	Haw to Cape Fear	Haw to Neuse
	Haw	Raleigh	Durham	Durham Co. Reclaimed		Potable	WRF Reuse	Potable	WRF Reuse	Potable	WRF Reuse	WTP Process Water	WRF	WRF	Total WRFs						
2/11/2016	19.26	0.00	0.00	0.000	19.26	0.228	0.000	0.011	0.000	0.529	-0.001	3.90	0.00	4.03	10.56	4.13	4.04	11.09	19.26	0.011	11.09
2/12/2016	17.68	0.00	0.00	0.000	17.68	0.209	0.000	0.010	0.000	0.485	0.274	3.59	0.00	3.45	9.66	3.80	3.46	10.42	17.68	0.010	10.42
2/13/2016	19.01	0.00	0.00	0.000	19.01	0.229	0.000	0.011	0.000	0.532	0.459	3.58	0.00	3.80	10.40	3.81	3.81	11.39	19.01	0.011	11.39
2/14/2016	19.01	0.00	0.00	0.140	19.15	0.225	0.140	0.011	0.000	0.523	0.890	3.97	0.00	3.68	9.71	4.34	3.69	11.12	19.15	0.011	10.98
2/15/2016	20.03	0.00	0.00	0.266	20.30	0.253	0.266	0.012	0.000	0.587	1.082	3.27	0.00	4.04	10.79	3.79	4.05	12.46	20.30	0.012	12.19
2/16/2016	20.59	0.00	0.00	0.181	20.77	0.232	0.181	0.011	0.000	0.538	0.846	5.14	0.00	3.36	10.46	5.55	3.37	11.85	20.77	0.011	11.67
2/17/2016	18.05	0.00	0.00	0.170	18.22	0.212	0.170	0.010	0.000	0.491	0.627	3.97	0.00	2.93	9.81	4.35	2.94	10.92	18.22	0.010	10.75
2/18/2016	18.76	0.00	0.00	0.184	18.94	0.237	0.184	0.011	0.000	0.549	0.573	3.01	0.00	3.99	10.39	3.43	4.00	11.51	18.94	0.011	11.33
2/19/2016	18.95	0.00	0.00	0.172	19.12	0.216	0.172	0.010	0.000	0.501	0.424	4.58	0.00	3.44	9.78	4.97	3.45	10.70	19.12	0.010	10.53
2/20/2016	20.09	0.00	0.00	0.168	20.26	0.248	0.168	0.012	0.000	0.576	0.348	3.55	0.00	4.24	11.11	3.97	4.26	12.04	20.26	0.012	11.87
2/21/2016	19.63	0.00	0.00	0.169	19.80	0.240	0.169	0.011	0.000	0.557	0.349	3.62	0.00	4.23	10.62	4.03	4.25	11.52	19.80	0.011	11.36
2/22/2016	19.00	0.00	0.00	0.159	19.16	0.225	0.159	0.011	0.000	0.522	0.392	4.02	0.00	3.66	10.17	4.40	3.67	11.08	19.16	0.011	10.92
2/23/2016	19.89	0.00	0.00	0.154	20.04	0.248	0.154	0.012	0.000	0.575	0.398	3.35	0.00	4.01	11.29	3.75	4.02	12.27	20.04	0.012	12.11
2/24/2016	18.89	0.00	0.00	0.170	19.06	0.231	0.170	0.011	0.000	0.537	0.408	3.48	0.00	3.69	10.53	3.88	3.70	11.48	19.06	0.011	11.31
2/25/2016	19.16	0.00	0.00	0.182	19.34	0.218	0.182	0.010	0.000	0.506	0.424	4.66	0.00	3.44	9.91	5.06	3.45	10.84	19.34	0.010	10.66
2/26/2016	16.46	0.00	1.60	0.165	18.23	0.227	0.165	0.011	0.000	0.528	0.447	2.91	0.00	3.69	10.25	3.30	3.70	11.23	18.23	0.011	9.46
2/27/2016	16.87	0.00	1.58	0.162	18.61	0.231	0.162	0.011	0.000	0.537	0.398	3.03	0.00	3.68	10.56	3.42	3.69	11.50	18.61	0.011	9.76
2/28/2016	17.63	0.00	1.75	0.171	19.55	0.235	0.171	0.011	0.000	0.545	0.444	3.73	0.00	4.13	10.28	4.14	4.14	11.27	19.55	0.011	9.35
2/29/2016	19.77	0.00	1.69	0.176	21.64	0.243	0.176	0.011	0.000	0.563	0.421	5.31	0.00	4.14	10.78	5.73	4.15	11.76	21.64	0.011	9.89
3/1/2016	18.75	0.00	1.70	0.179	20.63	0.242	0.179	0.011	0.000	0.561	0.485	4.36	0.00	3.98	10.81	4.78	3.99	11.86	20.63	0.011	9.98
3/2/2016	17.83	0.00	1.26	0.163	19.25	0.236	0.163	0.011	0.000	0.547	0.516	3.38	0.00	4.01	10.39	3.78	4.02	11.45	19.25	0.011	10.03
3/3/2016	18.40	0.00	2.10	0.156	20.66	0.241	0.156	0.011	0.000	0.558	0.461	4.46	0.00	3.84	10.93	4.86	3.85	11.95	20.66	0.011	9.69
3/4/2016	18.34	0.00	1.75	0.157	20.25	0.243	0.157	0.011	0.000	0.563	0.413	3.91	0.00	3.89	11.07	4.31	3.90	12.04	20.25	0.011	10.13
3/5/2016	19.76	0.00	0.00	0.162	19.92	0.233	0.162	0.011	0.000	0.540	0.400	4.24	0.00	3.99	10.35	4.63	4.00	11.29	19.92	0.011	11.12
3/6/2016	19.39	0.00	0.00	0.157	19.55	0.231	0.157	0.011	0.000	0.537	0.390	3.96	0.00	4.04	10.22	4.35	4.05	11.15	19.55	0.011	10.99
3/7/2016	20.51	0.00	0.00	0.217	20.73	0.248	0.217	0.012	0.000	0.576	0.435	4.01	0.00	4.16	11.07	4.48	4.17	12.08	20.73	0.012	11.87
3/8/2016	20.22	0.00	0.00	0.211	20.43	0.247	0.211	0.012	0.000	0.572	0.425	3.82	0.00	4.11	11.03	4.28	4.12	12.03	20.43	0.012	11.82
3/9/2016	21.72	0.00	0.00	0.188	21.91	0.262	0.188	0.012	0.000	0.608	0.499	4.25	0.00	4.06	12.03	4.70	4.07	13.13	21.91	0.012	12.95
3/10/2016	21.73	0.00	0.00	0.176	21.91	0.251	0.176	0.012	0.000	0.582	0.526	5.01	0.00	4.08	11.27	5.44	4.09	12.38	21.91	0.012	12.21
3/11/2016	19.80	0.00	0.00	0.193	19.99	0.244	0.193	0.011	0.000	0.565	0.504	3.58	0.00	4.08	10.81	4.02	4.09	11.88	19.99	0.011	11.69
3/12/2016	20.56	0.00	0.00	0.169	20.73	0.248	0.169	0.012	0.000	0.575	0.519	4.03	0.00	4.34	10.83	4.45	4.35	11.93	20.73	0.012	11.76
3/13/2016	21.32	0.00	0.00	0.160	21.48	0.253	0.160	0.012	0.000	0.587	0.409	4.45	0.00	4.66	10.95	4.86	4.67	11.95	21.48	0.012	11.79
3/14/2016	20.90	0.00	0.00	0.161	21.06	0.254	0.161	0.012	0.000	0.590	0.515	3.93	0.00	4.24	11.36	4.35	4.25	12.46	21.06	0.012	12.30
3/15/2016	22.14	0.00	0.00	0.170	22.31	0.260	0.170	0.012	0.000	0.604	0.534	4.79	0.00	4.58	11.36	5.22	4.60	12.49	22.31	0.012	12.32
3/16/2016	21.18	0.00	0.00	0.175	21.36	0.255	0.175	0.012	0.000	0.592	0.569	4.16	0.00	4.25	11.34	4.59	4.26	12.50	21.36	0.012	12.33
3/17/2016	21.54	0.00	0.00	0.176	21.72	0.272	0.176	0.013	0.000	0.632	0.584	3.37	0.00	4.62	12.05	3.82	4.63	13.27	21.72	0.013	13.09
3/18/2016	21.61	0.00	0.00	0.185	21.80	0.250	0.185	0.012	0.000	0.580	0.541	4.97	0.00	4.09	11.17	5.40	4.10	12.29	21.80	0.012	12.11
3/19/2016	20.08	0.00	0.00	0.180	20.26	0.240	0.180	0.011	0.000	0.557	0.515	4.10	0.00	4.16	10.50	4.52	4.17	11.57	20.26	0.011	11.39
3/20/2016	19.86	0.00	0.00	0.167	20.03	0.235	0.167	0.011	0.000	0.545	0.513	4.20	0.00	4.10	10.25	4.60	4.12	11.31	20.03	0.011	11.14
3/21/2016	21.28	0.00	0.00	0.182	21.46	0.256	0.182	0.012	0.000	0.595	0.543	4.19	0.00	4.31	11.38	4.63	4.32	12.52	21.46	0.012	12.33
3/22/2016	21.53	0.00	0.00	0.162	21.69	0.259	0.162	0.012	0.000	0.601	0.517	4.25	0.00	4.55	11.34	4.67	4.57	12.45	21.69	0.012	12.29
3/23/2016	22.26	0.00	0.00	0.185	22.45	0.264	0.185	0.012	0.000	0.612	0.580	4.68	0.00	4.69	11.42	5.13	4.71	12.61	22.45	0.012	12.42

APPENDIX B – DAILY IBT AMOUNTS

	(1)	(2)	(3)	(4)	(5)=1+2 +3+4	(6)	(7)	(8)	(9)	(10)	(11)	(12)	(13)	(14)	(15)	(16)=6+7+1 2+13	(17)=8+9+ 14	(18)=10+ 11+15	(19)=16+1 7+18	(20)=8+9	(21)=18- 2-3-4
	Water Withdrawal/Purchase (mgd)				Total System Use	Consumptive Use (mgd)						Water Use Discharged as Wastewater (mgd)				Total Returned/Used in Each Basin (mgd)				Interbasin Transfer (mgd)	
	Jordan Lake Withdrawal	Neuse Basin Purchase				Haw		Cape Fear		Neuse		Haw		Cape Fear	Neuse	Haw	Cape Fear	Neuse	Total for All Basins	Haw to Cape Fear	Haw to Neuse
	Haw	Raleigh	Durham	Durham Co. Reclaimed		Potable	WRF Reuse	Potable	WRF Reuse	Potable	WRF Reuse	WTP Process Water	WRF	WRF	Total WRFs						
3/24/2016	21.82	0.00	0.00	0.171	21.99	0.270	0.171	0.013	0.000	0.625	0.852	3.84	0.00	4.46	11.76	4.28	4.48	13.23	21.99	0.013	13.06
3/25/2016	19.29	0.00	0.00	0.171	19.46	0.233	0.171	0.011	0.000	0.542	0.547	3.74	0.00	3.95	10.27	4.14	3.96	11.36	19.46	0.011	11.19
3/26/2016	21.66	0.00	0.00	0.213	21.87	0.394	0.213	0.019	0.000	0.913	0.543	3.90	0.00	4.47	11.42	4.51	4.49	12.88	21.87	0.019	12.66
3/27/2016	19.36	0.00	0.00	0.148	19.51	0.225	0.148	0.011	0.000	0.522	0.530	4.37	0.00	3.88	9.83	4.74	3.89	10.88	19.51	0.011	10.73
3/28/2016	20.49	0.00	0.00	0.175	20.67	0.248	0.175	0.012	0.000	0.574	0.512	3.99	0.00	4.13	11.03	4.41	4.14	12.11	20.67	0.012	11.94
3/29/2016	20.18	0.00	0.00	0.114	20.29	0.239	0.114	0.011	0.000	0.554	0.527	4.20	0.00	3.97	10.68	4.55	3.98	11.76	20.29	0.011	11.65
3/30/2016	19.69	0.00	0.03	0.130	19.85	0.236	0.130	0.011	0.000	0.548	0.548	3.94	0.00	4.07	10.36	4.31	4.08	11.46	19.85	0.011	11.30
3/31/2016	19.14	0.00	1.92	0.142	21.20	0.258	0.142	0.012	0.000	0.599	0.551	3.82	0.00	4.77	11.04	4.22	4.78	12.19	21.20	0.012	10.14
4/1/2016	17.82	0.00	2.95	0.132	20.90	0.232	0.132	0.011	0.000	0.538	0.528	5.27	0.00	3.84	10.35	5.63	3.85	11.42	20.90	0.011	8.34
4/2/2016	16.69	0.00	2.80	0.110	19.60	0.244	0.110	0.011	0.000	0.566	0.520	3.18	0.00	4.26	10.72	3.53	4.27	11.80	19.60	0.011	8.89
4/3/2016	17.77	0.00	2.91	0.124	20.80	0.242	0.124	0.011	0.000	0.561	0.548	4.51	0.00	4.38	10.42	4.88	4.40	11.53	20.80	0.011	8.50
4/4/2016	19.67	0.00	3.14	0.156	22.97	0.272	0.156	0.013	0.000	0.632	0.554	4.63	0.00	4.66	12.05	5.06	4.67	13.24	22.97	0.013	9.94
4/5/2016	16.15	0.00	3.04	0.200	19.39	0.240	0.200	0.011	0.000	0.557	0.539	3.24	0.00	4.05	10.56	3.68	4.06	11.65	19.39	0.011	8.41
4/6/2016	17.80	0.00	2.53	0.130	20.46	0.234	0.130	0.011	0.000	0.542	0.559	4.72	0.00	3.81	10.46	5.08	3.82	11.56	20.46	0.011	8.90
4/7/2016	18.03	0.00	2.85	0.126	21.01	0.259	0.126	0.012	0.000	0.600	0.514	3.59	0.00	4.33	11.58	3.97	4.34	12.69	21.01	0.012	9.72
4/8/2016	19.23	0.00	3.17	0.134	22.54	0.904	0.134	0.043	0.000	2.097	0.511	4.04	0.00	3.25	11.56	5.08	3.29	14.17	22.54	0.043	10.86
4/9/2016	18.97	0.00	0.00	0.116	19.09	0.236	0.116	0.011	0.000	0.547	0.496	3.22	0.00	4.79	9.67	3.57	4.80	10.72	19.09	0.011	10.60
4/10/2016	21.70	0.00	0.00	0.136	21.84	0.267	0.136	0.013	0.000	0.620	0.513	3.84	0.00	4.93	11.52	4.24	4.94	12.65	21.84	0.013	12.51
4/11/2016	21.51	0.00	0.00	0.162	21.67	0.335	0.162	0.016	0.000	0.777	0.520	3.32	0.00	4.64	11.90	3.82	4.66	13.19	21.67	0.016	13.03
4/12/2016	20.92	0.00	0.00	0.095	21.02	0.252	0.095	0.012	0.000	0.584	0.539	4.07	0.00	4.13	11.33	4.42	4.14	12.46	21.02	0.012	12.36
4/13/2016	19.71	0.00	0.00	0.136	19.85	0.237	0.136	0.011	0.000	0.550	0.504	3.88	0.00	3.89	10.64	4.25	3.90	11.70	19.85	0.011	11.56
4/14/2016	20.16	0.00	0.00	0.154	20.31	0.260	0.154	0.012	0.001	0.602	0.511	2.83	0.00	4.54	11.40	3.24	4.55	12.52	20.31	0.013	12.36
4/15/2016	21.63	0.00	0.00	0.132	21.76	0.265	0.132	0.012	0.000	0.614	0.829	3.95	0.00	4.45	11.51	4.35	4.46	12.96	21.76	0.012	12.82
4/16/2016	20.25	0.00	0.00	0.153	20.40	0.242	0.153	0.011	0.000	0.562	0.845	4.10	0.00	4.07	10.42	4.50	4.08	11.83	20.40	0.011	11.67
4/17/2016	22.24	0.00	0.00	0.173	22.41	0.632	0.173	0.030	0.000	1.465	0.808	3.01	0.00	5.13	11.17	3.81	5.16	13.44	22.41	0.030	13.27
4/18/2016	22.00	0.00	0.00	0.216	22.22	0.572	0.216	0.027	0.000	1.328	0.562	3.76	0.00	4.63	11.12	4.55	4.65	13.01	22.22	0.027	12.80
4/19/2016	22.70	0.00	0.00	0.245	22.95	0.791	0.245	0.037	0.000	1.835	0.659	3.95	0.00	4.52	10.91	4.99	4.56	13.40	22.95	0.037	13.16
4/20/2016	23.57	0.00	0.00	0.206	23.78	0.862	0.206	0.041	0.000	2.000	0.656	4.42	0.00	4.34	11.25	5.49	4.38	13.90	23.78	0.041	13.70
4/21/2016	23.91	0.00	0.00	0.207	24.12	1.209	0.207	0.057	0.000	2.805	0.756	4.44	0.00	4.45	10.20	5.86	4.50	13.76	24.12	0.057	13.55
4/22/2016	23.30	0.00	0.00	0.107	23.41	0.284	0.107	0.013	0.000	0.660	0.589	4.26	0.00	4.03	13.47	4.65	4.04	14.72	23.41	0.013	14.61
4/23/2016	19.61	0.00	0.00	0.184	19.79	0.257	0.184	0.012	0.000	0.595	0.606	2.52	0.00	5.17	10.45	2.96	5.18	11.65	19.79	0.012	11.47
4/24/2016	22.06	0.00	0.00	0.186	22.25	0.267	0.186	0.013	0.000	0.620	0.601	4.25	0.00	4.94	11.37	4.70	4.95	12.59	22.25	0.013	12.41
4/25/2016	21.97	0.00	0.00	0.152	22.12	0.456	0.152	0.022	0.000	1.058	0.591	3.49	0.00	4.79	11.57	4.10	4.81	13.22	22.12	0.022	13.06
4/26/2016	24.39	0.00	0.00	0.225	24.62	0.720	0.225	0.034	0.000	1.669	0.779	4.84	0.00	4.60	11.75	5.78	4.63	14.20	24.62	0.034	13.97
4/27/2016	22.83	0.00	0.00	0.198	23.03	0.276	0.198	0.013	0.000	0.641	0.670	4.42	0.00	5.34	11.47	4.89	5.35	12.78	23.03	0.013	12.58
4/28/2016	23.33	0.00	0.00	0.154	23.48	0.455	0.154	0.021	0.000	1.056	0.763	3.51	0.00	5.01	12.52	4.12	5.03	14.34	23.48	0.021	14.18
4/29/2016	20.77	0.00	0.00	0.146	20.92	0.263	0.146	0.012	0.000	0.611	0.534	3.19	0.00	4.40	11.76	3.60	4.41	12.91	20.92	0.012	12.76
4/30/2016	22.69	0.00	0.00	0.146	22.84	0.266	0.146	0.013	0.000	0.617	0.941	4.93	0.00	4.70	11.22	5.34	4.71	12.78	22.84	0.013	12.63
5/1/2016	20.26	0.00	0.00	0.141	20.40	0.258	0.141	0.012	0.000	0.598	0.850	3.05	0.00	4.66	10.83	3.45	4.68	12.28	20.40	0.012	12.14
5/2/2016	21.78	0.00	0.00	0.071	21.85	1.329	0.071	0.063	0.000	3.083	0.523	4.41	0.00	5.16	7.21	5.81	5.22	10.82	21.85	0.063	10.75
5/3/2016	19.99	0.00	0.00	0.144	20.13	0.242	0.144	0.011	0.000	0.560	0.607	3.87	0.00	3.94	10.76	4.26	3.95	11.93	20.13	0.011	11.79
5/4/2016	24.48	0.00	0.00	0.168	24.65	0.280	0.168	0.013	0.000	0.649	0.516	5.81	0.00	4.61	12.60	6.26	4.62	13.77	24.65	0.013	13.60

APPENDIX B – DAILY IBT AMOUNTS

	(1)	(2)	(3)	(4)	(5)=1+2 +3+4	(6)	(7)	(8)	(9)	(10)	(11)	(12)	(13)	(14)	(15)	(16)=6+7+1 2+13	(17)=8+9+ 14	(18)=10+ 11+15	(19)=16+1 7+18	(20)=8+9	(21)=18- 2-3-4
	Water Withdrawal/Purchase (mgd)				Consumptive Use (mgd)							Water Use Discharged as Wastewater (mgd)				Total Returned/Used in Each Basin (mgd)				Interbasin Transfer (mgd)	
	Jordan Lake Withdrawal	Neuse Basin Purchase			Total System Use	Haw		Cape Fear		Neuse		Haw		Cape Fear	Neuse	Haw	Cape Fear	Neuse	Total for All Basins	Haw to Cape Fear	Haw to Neuse
	Haw	Raleigh	Durham	Durham Co. Reclaimed		Potable	WRF Reuse	Potable	WRF Reuse	Potable	WRF Reuse	WTP Process Water	WRF	WRF	Total WRFs						
5/5/2016	20.65	0.00	0.00	0.166	20.82	0.253	0.166	0.012	0.000	0.587	0.581	3.78	0.00	4.00	11.44	4.20	4.01	12.61	20.82	0.012	12.44
5/6/2016	19.90	0.00	0.00	0.169	20.07	0.249	0.169	0.012	0.000	0.578	0.487	3.30	0.00	3.98	11.30	3.72	3.99	12.36	20.07	0.012	12.19
5/7/2016	20.54	0.00	0.00	0.159	20.70	0.244	0.159	0.012	0.000	0.566	0.559	4.27	0.00	4.18	10.71	4.67	4.19	11.84	20.70	0.012	11.68
5/8/2016	21.58	0.00	0.00	0.199	21.78	0.273	0.199	0.013	0.000	0.634	0.653	3.38	0.00	4.93	11.70	3.85	4.94	12.98	21.78	0.013	12.79
5/9/2016	22.80	0.00	0.00	0.208	23.01	0.278	0.208	0.013	0.000	0.644	0.569	4.31	0.00	4.91	12.08	4.80	4.92	13.29	23.01	0.013	13.08
5/10/2016	25.00	0.00	0.00	0.170	25.17	0.289	0.170	0.014	0.000	0.670	0.805	5.71	0.00	5.05	12.46	6.17	5.06	13.94	25.17	0.014	13.77
5/11/2016	22.10	0.00	0.00	0.216	22.32	0.274	0.216	0.013	0.000	0.636	0.657	3.85	0.00	4.56	12.11	4.34	4.57	13.41	22.32	0.013	13.19
5/12/2016	25.35	0.00	0.00	0.186	25.54	0.673	0.186	0.032	0.000	1.561	0.756	5.04	0.00	5.19	12.09	5.90	5.23	14.41	25.54	0.032	14.23
5/13/2016	22.28	0.00	0.00	0.170	22.45	0.284	0.170	0.013	0.000	0.659	0.616	3.31	0.00	4.95	12.45	3.76	4.96	13.72	22.45	0.013	13.55
5/14/2016	21.74	0.00	0.00	0.226	21.97	0.258	0.226	0.012	0.000	0.599	0.736	4.59	0.00	4.62	10.92	5.07	4.64	12.26	21.97	0.012	12.03
5/15/2016	21.95	0.00	0.00	0.222	22.17	0.271	0.222	0.013	0.000	0.629	0.672	3.91	0.00	5.06	11.39	4.40	5.08	12.69	22.17	0.013	12.47
5/16/2016	23.15	0.00	0.00	0.197	23.35	0.753	0.197	0.036	0.000	1.748	0.624	3.52	0.00	4.86	11.61	4.47	4.90	13.98	23.35	0.036	13.78
5/17/2016	23.28	0.00	0.00	0.188	23.47	0.414	0.188	0.020	0.000	0.961	0.750	4.35	0.00	4.78	12.01	4.95	4.80	13.72	23.47	0.020	13.53
5/18/2016	22.37	0.00	0.00	0.175	22.55	0.257	0.175	0.012	0.000	0.595	0.607	5.27	0.00	4.36	11.27	5.70	4.37	12.47	22.55	0.012	12.30
5/19/2016	21.08	0.00	0.00	0.164	21.24	0.270	0.164	0.013	0.000	0.626	0.621	3.07	0.00	4.74	11.74	3.50	4.75	12.99	21.24	0.013	12.83
5/20/2016	22.03	0.00	0.00	0.201	22.23	0.265	0.201	0.012	0.000	0.615	0.576	4.38	0.00	4.61	11.58	4.85	4.62	12.77	22.23	0.012	12.56
5/21/2016	20.12	0.00	0.00	0.173	20.29	0.247	0.173	0.012	0.000	0.574	0.659	3.63	0.00	4.43	10.56	4.05	4.44	11.80	20.29	0.012	11.63
5/22/2016	21.14	0.00	0.00	0.243	21.38	0.257	0.243	0.012	0.000	0.597	0.586	4.06	0.00	4.76	10.87	4.56	4.77	12.06	21.38	0.012	11.81
5/23/2016	21.84	0.00	0.00	0.109	21.95	0.259	0.109	0.012	0.000	0.601	1.001	4.49	0.00	4.44	11.04	4.86	4.45	12.64	21.95	0.012	12.53
5/24/2016	22.68	0.00	0.00	0.262	22.94	0.278	0.262	0.013	0.000	0.645	1.106	4.22	0.00	4.75	11.67	4.76	4.77	13.42	22.94	0.013	13.15
5/25/2016	23.28	0.00	0.00	0.248	23.53	0.702	0.248	0.033	0.000	1.627	0.702	3.54	0.00	4.72	11.96	4.49	4.75	14.29	23.53	0.033	14.04
5/26/2016	24.11	0.00	0.00	0.264	24.37	0.964	0.264	0.045	0.000	2.235	0.824	3.97	0.00	4.66	11.41	5.20	4.71	14.47	24.37	0.045	14.20
5/27/2016	26.87	0.00	0.00	0.228	27.10	1.595	0.228	0.075	0.000	3.699	0.724	4.91	0.00	4.59	11.27	6.73	4.67	15.70	27.10	0.075	15.47
5/28/2016	23.28	0.00	0.00	0.223	23.50	1.203	0.223	0.057	0.000	2.792	0.813	3.66	0.00	4.46	10.29	5.09	4.52	13.90	23.50	0.057	13.67
5/29/2016	21.09	0.00	0.00	0.196	21.29	0.260	0.196	0.012	0.000	0.603	0.671	3.77	0.00	4.65	11.12	4.23	4.66	12.40	21.29	0.012	12.20
5/30/2016	20.03	0.00	0.00	0.244	20.27	0.248	0.244	0.012	0.000	0.575	0.546	3.59	0.00	4.55	10.51	4.08	4.57	11.63	20.27	0.012	11.38
5/31/2016	22.68	0.00	0.00	0.245	22.93	0.284	0.245	0.013	0.000	0.659	0.671	3.80	0.00	4.83	12.42	4.33	4.84	13.75	22.93	0.013	13.51
6/1/2016	21.90	0.00	0.00	0.217	22.12	0.258	0.217	0.012	0.000	0.599	0.656	4.73	0.00	4.69	10.95	5.21	4.70	12.21	22.12	0.012	11.99
6/2/2016	23.49	0.00	0.00	0.233	23.72	0.612	0.233	0.029	0.000	1.421	0.795	3.71	0.00	4.89	12.03	4.56	4.92	14.25	23.72	0.029	14.01
6/3/2016	24.53	0.00	0.00	0.293	24.82	1.110	0.293	0.052	0.000	2.576	0.705	4.00	0.00	4.73	11.35	5.40	4.79	14.63	24.82	0.052	14.34
6/4/2016	22.20	0.00	0.00	0.180	22.38	0.629	0.180	0.030	0.000	1.459	0.748	3.14	0.00	4.97	11.22	3.95	5.00	13.43	22.38	0.030	13.25
6/5/2016	22.65	0.00	0.00	0.211	22.86	0.288	0.211	0.014	0.000	0.667	0.699	3.50	0.00	5.17	12.31	4.00	5.19	13.68	22.86	0.014	13.47
6/6/2016	21.80	0.00	0.00	0.191	21.99	0.262	0.191	0.012	0.000	0.607	0.537	4.38	0.00	4.82	11.19	4.83	4.83	12.33	21.99	0.012	12.14
6/7/2016	22.68	0.00	0.00	0.280	22.96	0.286	0.280	0.013	0.000	0.663	0.732	3.72	0.00	4.81	12.46	4.29	4.82	13.85	22.96	0.013	13.57
6/8/2016	23.16	0.00	0.00	0.239	23.40	0.428	0.239	0.020	0.000	0.993	0.698	3.94	0.00	4.92	12.16	4.61	4.94	13.85	23.40	0.020	13.61
6/9/2016	24.45	0.00	0.00	0.324	24.77	1.186	0.324	0.056	0.000	2.751	0.829	3.63	0.00	4.70	11.29	5.14	4.76	14.87	24.77	0.056	14.55
6/10/2016	26.31	0.00	0.00	0.309	26.62	1.544	0.309	0.073	0.000	3.582	0.744	4.56	0.00	4.80	11.01	6.41	4.87	15.34	26.62	0.073	15.03
6/11/2016	25.41	0.00	0.00	0.295	25.71	1.706	0.295	0.080	0.000	3.957	0.753	3.48	0.00	4.64	10.79	5.48	4.72	15.50	25.71	0.080	15.21
6/12/2016	27.20	0.00	0.00	0.302	27.50	1.891	0.302	0.089	0.000	4.387	0.813	4.27	0.00	5.00	10.75	6.46	5.09	15.95	27.50	0.089	15.64
6/13/2016	23.60	0.00	0.00	0.323	23.92	1.267	0.323	0.060	0.000	2.938	0.761	4.09	0.00	3.81	10.67	5.68	3.87	14.37	23.92	0.060	14.05
6/14/2016	27.27	0.00	0.00	0.513	27.78	1.923	0.513	0.091	0.000	4.462	1.277	3.94	0.00	5.09	10.48	6.38	5.18	16.22	27.78	0.091	15.71
6/15/2016	28.67	0.00	0.00	0.375	29.05	0.601	0.375	0.028	0.000	1.394	1.090	8.90	0.00	4.96	11.70	9.88	4.99	14.18	29.05	0.028	13.81



APPENDIX B – DAILY IBT AMOUNTS

	(1)	(2)	(3)	(4)	(5)=1+2 +3+4	(6)	(7)	(8)	(9)	(10)	(11)	(12)	(13)	(14)	(15)	(16)=6+7+1 2+13	(17)=8+9+ 14	(18)=10+ 11+15	(19)=16+1 7+18	(20)=8+9	(21)=18- 2-3-4
	Water Withdrawal/Purchase (mgd)				Consumptive Use (mgd)						Water Use Discharged as Wastewater (mgd)				Total Returned/Used in Each Basin (mgd)				Interbasin Transfer (mgd)		
	Jordan Lake Withdrawal	Neuse Basin Purchase			Total System Use	Haw		Cape Fear		Neuse		Haw		Cape Fear	Neuse	Haw	Cape Fear	Neuse	Total for All Basins	Haw to Cape Fear	Haw to Neuse
	Haw	Raleigh	Durham	Durham Co. Reclaimed		Potable	WRF Reuse	Potable	WRF Reuse	Potable	WRF Reuse	WTP Process Water	WRF	WRF	Total WRFs						
6/16/2016	26.91	0.00	0.00	0.333	27.24	1.173	0.333	0.055	0.000	2.721	0.786	6.20	0.00	4.58	11.39	7.70	4.64	14.90	27.24	0.055	14.56
6/17/2016	23.84	0.00	0.00	0.361	24.20	1.198	0.361	0.056	0.000	2.779	0.743	3.57	0.00	4.34	11.15	5.13	4.40	14.68	24.20	0.056	14.32
6/18/2016	24.44	0.00	0.00	0.323	24.76	1.340	0.323	0.063	0.000	3.110	0.792	4.76	0.00	4.23	10.14	6.42	4.30	14.04	24.76	0.063	13.72
6/19/2016	23.25	0.00	0.00	0.331	23.58	1.234	0.331	0.058	0.000	2.862	0.748	3.23	0.00	5.06	10.06	4.79	5.12	13.67	23.58	0.058	13.34
6/20/2016	24.61	0.00	0.00	0.386	25.00	1.676	0.386	0.079	0.000	3.888	0.818	2.93	0.00	4.70	10.52	4.99	4.78	15.22	25.00	0.079	14.84
6/21/2016	29.29	0.00	0.00	0.421	29.71	2.671	0.421	0.126	0.000	6.195	1.092	4.56	0.00	4.42	10.22	7.65	4.55	17.51	29.71	0.126	17.09
6/22/2016	25.56	0.00	0.00	0.396	25.96	1.649	0.396	0.078	0.000	3.825	0.916	3.72	0.00	4.36	11.01	5.76	4.44	15.76	25.96	0.078	15.36
6/23/2016	26.61	0.00	0.00	0.358	26.97	1.745	0.358	0.082	0.000	4.048	0.916	4.13	0.00	4.86	10.83	6.23	4.94	15.79	26.97	0.082	15.44
6/24/2016	23.20	0.00	0.00	0.265	23.47	0.658	0.265	0.031	0.000	1.526	0.716	4.38	0.00	4.60	11.29	5.30	4.63	13.53	23.47	0.031	13.26
6/25/2016	25.11	0.00	0.00	0.274	25.38	1.504	0.274	0.071	0.000	3.488	0.825	4.36	0.00	4.50	10.37	6.14	4.57	14.68	25.38	0.071	14.40
6/26/2016	26.16	0.00	0.00	0.285	26.45	1.859	0.285	0.088	0.000	4.313	0.831	4.39	0.00	4.49	10.19	6.53	4.58	15.33	26.45	0.088	15.05
6/27/2016	24.84	0.00	0.00	0.304	25.14	1.481	0.304	0.070	0.000	3.436	0.769	3.65	0.00	4.68	10.76	5.44	4.75	14.96	25.14	0.070	14.66
6/28/2016	23.09	0.00	0.00	0.291	23.38	0.286	0.291	0.013	0.000	0.664	0.884	4.12	0.00	4.87	12.25	4.70	4.88	13.80	23.38	0.013	13.51
6/29/2016	24.65	0.00	0.00	0.224	24.87	0.684	0.224	0.032	0.000	1.587	0.763	4.77	0.00	4.87	11.95	5.68	4.90	14.30	24.87	0.032	14.07
6/30/2016	22.56	0.00	0.00	0.274	22.83	0.443	0.274	0.021	0.000	1.029	0.755	3.65	0.00	4.84	11.82	4.37	4.86	13.61	22.83	0.021	13.33
7/1/2016	23.81	0.00	0.00	0.320	24.13	0.882	0.320	0.042	0.000	2.045	0.716	4.37	0.00	4.48	11.28	5.57	4.52	14.04	24.13	0.042	13.72
7/2/2016	22.77	0.00	0.00	0.271	23.04	0.882	0.271	0.042	0.000	2.046	0.826	4.22	0.00	4.46	10.30	5.37	4.50	13.17	23.04	0.042	12.90
7/3/2016	20.86	0.00	0.00	0.227	21.09	0.255	0.227	0.012	0.000	0.591	0.755	3.93	0.00	4.51	10.81	4.41	4.52	12.15	21.09	0.012	11.93
7/4/2016	20.87	0.00	0.00	0.195	21.07	0.255	0.195	0.012	0.000	0.592	0.968	3.88	0.00	4.67	10.49	4.33	4.68	12.05	21.07	0.012	11.85
7/5/2016	23.54	0.00	0.00	0.269	23.81	0.381	0.269	0.018	0.000	0.885	0.833	4.26	0.00	5.07	12.09	4.91	5.09	13.81	23.81	0.018	13.54
7/6/2016	23.62	0.00	0.00	0.177	23.80	0.416	0.177	0.020	0.000	0.965	0.704	4.37	0.00	4.84	12.31	4.96	4.86	13.97	23.80	0.020	13.80
7/7/2016	24.32	0.00	0.00	0.266	24.59	0.995	0.266	0.047	0.000	2.307	0.839	3.99	0.00	4.78	11.36	5.25	4.83	14.51	24.59	0.047	14.24
7/8/2016	24.92	0.00	0.00	0.256	25.18	1.226	0.256	0.058	0.000	2.844	1.052	4.23	0.00	4.54	10.97	5.71	4.59	14.87	25.18	0.058	14.62
7/9/2016	23.72	0.00	0.00	0.249	23.97	0.789	0.249	0.037	0.000	1.831	1.058	4.38	0.00	4.71	10.91	5.42	4.75	13.80	23.97	0.037	13.55
7/10/2016	24.39	0.00	0.00	0.261	24.65	1.116	0.261	0.053	0.000	2.589	1.094	4.03	0.00	4.91	10.60	5.41	4.96	14.28	24.65	0.053	14.02
7/11/2016	24.03	0.00	0.00	0.259	24.29	0.933	0.259	0.044	0.000	2.165	1.046	4.20	0.00	4.54	11.10	5.39	4.59	14.31	24.29	0.044	14.05
7/12/2016	24.75	0.00	0.00	0.320	25.07	1.427	0.320	0.067	0.000	3.311	0.870	3.87	0.00	4.55	10.65	5.62	4.62	14.83	25.07	0.067	14.51
7/13/2016	27.67	0.00	0.00	0.340	28.01	1.914	0.340	0.090	0.000	4.441	0.810	4.96	0.00	4.58	10.87	7.21	4.67	16.13	28.01	0.090	15.79
7/14/2016	26.28	0.00	0.00	0.453	26.73	2.055	0.453	0.097	0.000	4.768	0.980	3.68	0.00	4.44	10.26	6.19	4.54	16.00	26.73	0.097	15.55
7/15/2016	26.69	0.00	0.00	0.366	27.06	1.576	0.366	0.074	0.000	3.656	0.908	4.37	0.00	4.49	11.62	6.31	4.56	16.18	27.06	0.074	15.82
7/16/2016	23.61	0.00	0.00	0.223	23.83	0.289	0.223	0.014	0.000	0.670	0.750	4.38	0.00	5.21	12.30	4.89	5.22	13.72	23.83	0.014	13.50
7/17/2016	23.00	0.00	0.00	0.232	23.23	0.291	0.232	0.014	0.000	0.676	0.688	3.61	0.00	4.08	13.65	4.13	4.09	15.01	23.23	0.014	14.78
7/18/2016	23.77	0.00	0.00	0.246	24.02	0.295	0.246	0.014	0.000	0.685	0.656	4.12	0.00	4.42	13.58	4.66	4.43	14.92	24.02	0.014	14.67
7/19/2016	25.19	0.00	0.00	0.315	25.51	0.834	0.315	0.039	0.000	1.935	0.888	4.45	0.00	4.52	12.53	5.60	4.56	15.35	25.51	0.039	15.03
7/20/2016	24.68	0.00	0.00	0.298	24.98	0.965	0.298	0.045	0.000	2.238	0.822	4.07	0.00	4.60	11.94	5.33	4.64	15.00	24.98	0.045	14.70
7/21/2016	28.06	0.00	0.00	0.338	28.40	2.254	0.338	0.106	0.000	5.229	0.947	4.11	0.00	4.58	10.83	6.70	4.69	17.01	28.40	0.106	16.67
7/22/2016	27.75	0.00	0.00	0.418	28.17	1.875	0.418	0.088	0.000	4.349	0.822	5.18	0.00	4.49	10.95	7.47	4.58	16.12	28.17	0.088	15.70
7/23/2016	27.72	0.00	0.00	0.390	28.11	2.488	0.390	0.117	0.000	5.772	0.930	3.51	0.00	4.62	10.28	6.39	4.74	16.99	28.11	0.117	16.60
7/24/2016	25.27	0.00	0.00	0.367	25.64	1.792	0.367	0.084	0.000	4.157	1.157	2.92	0.00	4.79	10.37	5.08	4.88	15.68	25.64	0.084	15.31
7/25/2016	26.80	0.00	0.00	0.482	27.28	1.916	0.482	0.090	0.000	4.444	0.885	4.41	0.00	4.55	10.50	6.81	4.64	15.83	27.28	0.090	15.35
7/26/2016	30.10	0.00	0.00	0.367	30.47	2.175	0.367	0.103	0.000	5.045	1.399	5.22	0.00	4.93	11.23	7.76	5.03	17.67	30.47	0.103	17.31
7/27/2016	23.66	0.00	0.00	0.219	23.88	0.494	0.219	0.023	0.000	1.146	1.192	3.84	0.00	4.95	12.02	4.55	4.97	14.36	23.88	0.023	14.14

APPENDIX B – DAILY IBT AMOUNTS

	(1)	(2)	(3)	(4)	(5)=1+2 +3+4	(6)	(7)	(8)	(9)	(10)	(11)	(12)	(13)	(14)	(15)	(16)=6+7+1 2+13	(17)=8+9+ 14	(18)=10+ 11+15	(19)=16+1 7+18	(20)=8+9	(21)=18- 2-3-4
	Water Withdrawal/Purchase (mgd)				Consumptive Use (mgd)							Water Use Discharged as Wastewater (mgd)				Total Returned/Used in Each Basin (mgd)				Interbasin Transfer (mgd)	
	Jordan Lake Withdrawal	Neuse Basin Purchase			Total System Use	Haw		Cape Fear		Neuse		Haw		Cape Fear	Neuse	Haw	Cape Fear	Neuse	Total for All Basins	Haw to Cape Fear	Haw to Neuse
	Haw	Raleigh	Durham	Durham Co. Reclaimed		Potable	WRF Reuse	Potable	WRF Reuse	Potable	WRF Reuse	WTP Process Water	WRF	WRF	Total WRFs						
7/28/2016	25.48	0.00	0.00	0.327	25.81	1.207	0.327	0.057	0.000	2.801	1.301	4.79	0.00	4.53	10.79	6.32	4.59	14.89	25.81	0.057	14.57
7/29/2016	27.27	0.00	0.00	0.385	27.66	2.096	0.385	0.099	0.000	4.863	1.283	3.71	0.00	4.65	10.57	6.19	4.75	16.71	27.66	0.099	16.33
7/30/2016	27.30	0.00	0.00	0.292	27.59	2.113	0.292	0.100	0.000	4.902	1.290	4.16	0.00	4.57	10.17	6.56	4.67	16.36	27.59	0.100	16.07
7/31/2016	27.01	0.00	0.00	0.359	27.37	2.001	0.359	0.094	0.000	4.642	1.110	4.07	0.00	4.64	10.45	6.43	4.73	16.21	27.37	0.094	15.85
8/1/2016	22.29	0.00	0.00	0.253	22.54	0.601	0.253	0.028	0.000	1.394	1.096	2.85	0.00	5.19	11.13	3.70	5.22	13.62	22.54	0.028	13.37
8/2/2016	26.40	0.00	0.00	0.343	26.74	1.265	0.343	0.060	0.000	2.936	1.250	5.55	0.00	4.60	10.74	7.16	4.66	14.93	26.74	0.060	14.58
8/3/2016	23.20	0.00	0.00	0.290	23.49	0.907	0.290	0.043	0.000	2.103	1.060	3.10	0.00	4.72	11.26	4.30	4.77	14.43	23.49	0.043	14.14
8/4/2016	26.15	0.00	0.00	0.285	26.44	1.433	0.285	0.068	0.000	3.324	1.136	4.62	0.00	4.56	11.01	6.34	4.62	15.47	26.44	0.068	15.19
8/5/2016	22.68	0.00	0.00	0.222	22.90	0.272	0.222	0.013	0.000	0.631	0.615	4.58	0.00	4.87	11.70	5.07	4.88	12.95	22.90	0.013	12.73
8/6/2016	22.46	0.00	0.00	0.203	22.66	0.392	0.203	0.018	0.000	0.909	0.988	3.73	0.00	5.05	11.38	4.32	5.07	13.27	22.66	0.018	13.07
8/7/2016	23.49	0.00	0.00	0.293	23.78	0.678	0.293	0.032	0.000	1.573	1.089	3.32	0.00	5.20	11.60	4.29	5.23	14.26	23.78	0.032	13.97
8/8/2016	25.62	0.00	0.00	0.194	25.81	0.782	0.194	0.037	0.000	1.815	0.950	4.73	0.00	4.90	12.41	5.71	4.93	15.18	25.81	0.037	14.98
8/9/2016	23.82	0.00	0.00	0.253	24.07	0.716	0.253	0.034	0.000	1.661	0.817	3.78	0.00	4.77	12.04	4.75	4.80	14.52	24.07	0.034	14.27
8/10/2016	25.55	0.00	0.00	0.255	25.81	1.029	0.255	0.049	0.000	2.388	0.803	4.54	0.00	4.75	11.99	5.82	4.80	15.18	25.81	0.049	14.93
8/11/2016	25.97	0.00	0.00	0.262	26.23	1.351	0.262	0.064	0.000	3.133	1.000	4.47	0.00	4.72	11.23	6.08	4.79	15.36	26.23	0.064	15.10
8/12/2016	25.78	0.00	0.00	0.267	26.05	1.491	0.267	0.070	0.000	3.459	0.924	4.20	0.00	4.65	10.98	5.96	4.72	15.37	26.05	0.070	15.10
8/13/2016	25.73	0.00	0.00	0.233	25.96	1.716	0.233	0.081	0.000	3.981	0.936	3.96	0.00	4.72	10.34	5.91	4.80	15.26	25.96	0.081	15.02
8/14/2016	27.49	0.00	0.00	0.256	27.75	2.036	0.256	0.096	0.000	4.722	0.993	4.10	0.00	4.89	10.65	6.39	4.99	16.37	27.75	0.096	16.11
8/15/2016	25.68	0.00	0.00	0.220	25.90	1.429	0.220	0.067	0.000	3.314	0.934	4.40	0.00	4.65	10.88	6.05	4.72	15.13	25.90	0.067	14.91
8/16/2016	28.97	0.00	0.00	0.297	29.27	2.250	0.297	0.106	0.000	5.220	1.124	5.13	0.00	4.61	10.53	7.68	4.72	16.87	29.27	0.106	16.58
8/17/2016	26.62	0.00	0.00	0.295	26.92	1.786	0.295	0.084	0.000	4.143	0.988	4.27	0.00	4.54	10.81	6.35	4.63	15.94	26.92	0.084	15.64
8/18/2016	27.52	0.00	0.00	0.296	27.82	2.117	0.296	0.100	0.000	4.910	1.106	4.46	0.00	4.48	10.35	6.87	4.58	16.36	27.82	0.100	16.07
8/19/2016	29.23	0.00	0.00	0.287	29.52	2.484	0.287	0.117	0.000	5.762	1.019	5.08	0.00	4.42	10.34	7.85	4.54	17.13	29.52	0.117	16.84
8/20/2016	24.30	0.00	0.00	0.230	24.53	1.640	0.230	0.077	0.000	3.806	1.079	3.00	0.00	4.65	10.05	4.87	4.72	14.93	24.53	0.077	14.70
8/21/2016	26.82	0.00	0.00	0.214	27.03	1.855	0.214	0.087	0.000	4.302	1.172	4.15	0.00	4.79	10.46	6.22	4.88	15.94	27.03	0.087	15.72
8/22/2016	24.49	0.00	0.00	0.197	24.69	1.205	0.197	0.057	0.000	2.795	1.145	4.59	0.00	4.51	10.19	5.99	4.57	14.13	24.69	0.057	13.93
8/23/2016	26.64	0.00	0.00	0.266	26.91	2.092	0.266	0.099	0.000	4.853	1.145	4.30	0.00	4.33	9.82	6.66	4.43	15.82	26.91	0.099	15.55
8/24/2016	27.68	0.00	0.00	0.239	27.92	2.170	0.239	0.102	0.000	5.035	1.011	4.63	0.00	4.35	10.38	7.04	4.45	16.43	27.92	0.102	16.19
8/25/2016	29.06	0.00	0.00	0.306	29.37	2.616	0.306	0.123	0.000	6.069	1.027	4.62	0.00	4.42	10.19	7.54	4.54	17.28	29.37	0.123	16.98
8/26/2016	28.89	0.00	0.00	0.260	29.15	2.592	0.260	0.122	0.000	6.013	0.812	4.46	0.00	4.45	10.44	7.31	4.57	17.26	29.15	0.122	17.00
8/27/2016	27.83	0.00	0.00	0.289	28.12	2.344	0.289	0.111	0.000	5.438	0.983	4.06	0.00	4.71	10.19	6.69	4.82	16.61	28.12	0.111	16.32
8/28/2016	26.52	0.00	0.00	0.217	26.74	1.737	0.217	0.082	0.000	4.030	0.950	4.24	0.00	5.00	10.48	6.19	5.08	15.46	26.74	0.082	15.24
8/29/2016	24.67	0.00	0.00	0.230	24.90	1.444	0.230	0.068	0.000	3.351	0.997	3.74	0.00	4.59	10.48	5.41	4.66	14.83	24.90	0.068	14.60
8/30/2016	29.28	0.00	0.00	0.431	29.71	2.521	0.431	0.119	0.000	5.849	1.130	5.03	0.00	4.50	10.13	7.98	4.62	17.11	29.71	0.119	16.68
8/31/2016	28.11	0.00	0.00	0.413	28.52	2.365	0.413	0.111	0.000	5.486	1.005	3.79	0.00	4.52	10.83	6.57	4.63	17.33	28.52	0.111	16.91
9/1/2016	26.53	0.00	0.00	0.348	26.88	1.731	0.348	0.082	0.000	4.015	1.034	4.59	0.00	4.57	10.51	6.67	4.66	15.55	26.88	0.082	15.21
9/2/2016	24.40	0.00	0.00	0.223	24.62	0.852	0.223	0.040	0.000	1.977	0.966	3.52	0.00	4.93	12.12	4.60	4.97	15.06	24.62	0.040	14.84
9/3/2016	21.51	0.00	0.00	0.273	21.78	0.240	0.273	0.011	0.000	0.557	0.929	5.61	0.00	3.97	10.19	6.12	3.98	11.68	21.78	0.011	11.41
9/4/2016	22.57	0.00	0.00	0.284	22.85	1.063	0.284	0.050	0.000	2.467	0.887	4.11	0.00	4.35	9.64	5.46	4.40	12.99	22.85	0.050	12.71
9/5/2016	21.10	0.00	0.00	0.227	21.33	0.255	0.227	0.012	0.000	0.591	0.907	4.17	0.00	4.88	10.28	4.65	4.89	11.78	21.33	0.012	11.55
9/6/2016	25.94	0.00	0.00	0.366	26.31	1.612	0.366	0.076	0.000	3.740	1.185	4.19	0.00	4.60	10.54	6.17	4.67	15.46	26.31	0.076	15.10
9/7/2016	27.23	0.00	0.00	0.388	27.62	1.970	0.388	0.093	0.000	4.570	1.173	4.46	0.00	4.58	10.38	6.82	4.67	16.13	27.62	0.093	15.74

APPENDIX B – DAILY IBT AMOUNTS

	(1)	(2)	(3)	(4)	(5)=1+2 +3+4	(6)	(7)	(8)	(9)	(10)	(11)	(12)	(13)	(14)	(15)	(16)=6+7+1 2+13	(17)=8+9+ 14	(18)=10+ 11+15	(19)=16+1 7+18	(20)=8+9	(21)=18- 2-3-4
	Water Withdrawal/Purchase (mgd)				Consumptive Use (mgd)							Water Use Discharged as Wastewater (mgd)				Total Returned/Used in Each Basin (mgd)				Interbasin Transfer (mgd)	
	Jordan Lake Withdrawal	Neuse Basin Purchase			Total System Use	Haw		Cape Fear		Neuse		Haw		Cape Fear	Neuse	Haw	Cape Fear	Neuse	Total for All Basins	Haw to Cape Fear	Haw to Neuse
	Haw	Raleigh	Durham	Durham Co. Reclaimed		Potable	WRF Reuse	Potable	WRF Reuse	Potable	WRF Reuse	WTP Process Water	WRF	WRF	Total WRFs						
9/8/2016	27.25	0.00	0.00	0.446	27.70	2.100	0.446	0.099	0.000	4.871	1.301	4.29	0.00	4.45	10.14	6.84	4.55	16.31	27.70	0.099	15.86
9/9/2016	27.22	0.00	0.00	0.458	27.68	2.205	0.458	0.104	0.000	5.115	1.131	4.34	0.00	4.35	9.97	7.00	4.45	16.22	27.68	0.104	15.76
9/10/2016	26.12	0.00	0.00	0.367	26.49	2.143	0.367	0.101	0.000	4.971	1.214	3.39	0.00	4.59	9.71	5.90	4.69	15.89	26.49	0.101	15.53
9/11/2016	27.43	0.00	0.00	0.331	27.76	1.795	0.331	0.085	0.000	4.163	1.202	5.20	0.00	4.93	10.05	7.33	5.02	15.42	27.76	0.085	15.09
9/12/2016	23.90	0.00	0.00	0.371	24.27	1.661	0.371	0.078	0.000	3.854	1.087	2.41	0.00	4.46	10.35	4.44	4.54	15.29	24.27	0.078	14.92
9/13/2016	28.77	0.00	0.00	0.505	29.28	2.314	0.505	0.109	0.000	5.369	1.305	5.73	0.00	4.38	9.56	8.55	4.49	16.24	29.28	0.109	15.73
9/14/2016	27.34	0.00	0.00	0.366	27.71	2.335	0.366	0.110	0.000	5.417	1.184	3.66	0.00	4.34	10.29	6.36	4.45	16.89	27.71	0.110	16.53
9/15/2016	26.61	0.00	0.00	0.456	27.07	2.147	0.456	0.101	0.000	4.981	1.356	3.86	0.00	4.39	9.78	6.46	4.49	16.11	27.07	0.101	15.66
9/16/2016	28.98	0.00	0.00	0.475	29.46	2.476	0.475	0.117	0.000	5.745	1.249	5.61	0.00	4.24	9.54	8.56	4.36	16.53	29.46	0.117	16.06
9/17/2016	27.52	0.00	0.00	0.347	27.87	2.686	0.347	0.127	0.000	6.232	1.246	3.26	0.00	4.50	9.47	6.29	4.62	16.95	27.87	0.127	16.60
9/18/2016	27.48	0.00	0.00	0.287	27.77	2.191	0.287	0.103	0.000	5.082	1.135	3.88	0.00	4.99	10.09	6.36	5.10	16.31	27.77	0.103	16.02
9/19/2016	23.94	0.00	0.00	0.197	24.14	0.286	0.197	0.013	0.000	0.663	1.022	4.89	0.00	4.88	12.18	5.37	4.89	13.87	24.14	0.013	13.67
9/20/2016	23.37	0.00	0.00	0.263	23.63	0.774	0.263	0.037	0.000	1.797	0.999	4.01	0.00	4.60	11.15	5.05	4.64	13.95	23.63	0.037	13.68
9/21/2016	19.68	0.00	0.00	0.214	19.89	0.257	0.214	0.012	0.000	0.595	0.963	2.62	0.00	4.18	11.06	3.09	4.19	12.61	19.89	0.012	12.40
9/22/2016	25.58	0.00	0.00	0.232	25.81	0.469	0.232	0.022	0.000	1.088	0.953	5.40	0.00	5.17	12.48	6.10	5.19	14.52	25.81	0.022	14.29
9/23/2016	22.16	0.00	0.00	0.217	22.38	0.404	0.217	0.019	0.000	0.936	0.932	4.33	0.00	4.56	10.98	4.95	4.58	12.85	22.38	0.019	12.63
9/24/2016	22.22	0.00	0.00	0.250	22.47	0.906	0.250	0.043	0.000	2.101	1.050	3.14	0.00	4.72	10.26	4.30	4.76	13.41	22.47	0.043	13.16
9/25/2016	24.11	0.00	0.00	0.252	24.36	1.066	0.252	0.050	0.000	2.472	1.009	4.00	0.00	4.92	10.59	5.32	4.97	14.07	24.36	0.050	13.82
9/26/2016	24.43	0.00	0.00	0.222	24.65	1.318	0.222	0.062	0.000	3.057	1.005	3.60	0.00	4.57	10.81	5.14	4.64	14.88	24.65	0.062	14.65
9/27/2016	24.48	0.00	0.00	0.274	24.75	0.772	0.274	0.036	0.000	1.791	1.158	5.60	0.00	4.64	10.49	6.65	4.67	13.44	24.75	0.036	13.16
9/28/2016	24.30	0.00	0.00	0.257	24.56	1.043	0.257	0.049	0.000	2.419	0.944	4.11	0.00	4.63	11.10	5.41	4.68	14.46	24.56	0.049	14.21
9/29/2016	21.86	0.00	0.00	0.246	22.11	0.278	0.246	0.013	0.000	0.646	0.826	3.36	0.00	4.83	11.91	3.88	4.84	13.38	22.11	0.013	13.13
9/30/2016	21.32	0.00	0.00	0.250	21.57	0.262	0.250	0.012	0.000	0.608	0.840	3.93	0.00	4.56	11.11	4.44	4.57	12.55	21.57	0.012	12.30
10/1/2016	24.00	0.00	0.00	0.273	24.27	1.148	0.273	0.054	0.000	2.663	0.979	3.69	0.00	4.78	10.69	5.11	4.83	14.33	24.27	0.054	14.06
10/2/2016	24.25	0.00	0.00	0.287	24.54	0.839	0.287	0.040	0.000	1.947	0.930	4.64	0.00	5.08	10.78	5.77	5.12	13.65	24.54	0.040	13.37
10/3/2016	22.98	0.00	0.00	0.280	23.26	0.915	0.280	0.043	0.000	2.123	0.894	3.69	0.00	4.66	10.65	4.89	4.71	13.67	23.26	0.043	13.39
10/4/2016	25.89	0.00	0.00	0.325	26.22	1.744	0.325	0.082	0.000	4.046	1.206	3.90	0.00	4.53	10.38	5.97	4.61	15.63	26.22	0.082	15.31
10/5/2016	24.72	0.00	0.00	0.284	25.00	1.178	0.284	0.056	0.000	2.734	0.996	4.56	0.00	4.55	10.65	6.02	4.60	14.38	25.00	0.056	14.10
10/6/2016	25.62	0.00	0.00	0.349	25.97	1.335	0.349	0.063	0.000	3.096	1.100	4.78	0.00	4.53	10.72	6.46	4.59	14.92	25.97	0.063	14.57
10/7/2016	22.46	0.00	0.00	0.217	22.68	0.477	0.217	0.023	0.000	1.108	0.971	3.85	0.00	4.64	11.39	4.54	4.66	13.47	22.68	0.023	13.26
10/8/2016	20.55	0.00	0.00	0.228	20.78	0.244	0.228	0.011	0.000	0.565	0.961	4.37	0.00	3.83	10.57	4.84	3.84	12.10	20.78	0.011	11.87
10/9/2016	21.27	0.00	0.00	0.176	21.45	0.264	0.176	0.012	0.000	0.612	0.837	3.67	0.00	4.36	11.51	4.11	4.38	12.96	21.45	0.012	12.78
10/10/2016	21.29	0.00	0.00	0.140	21.43	0.264	0.140	0.012	0.000	0.613	0.834	3.65	0.00	4.27	11.65	4.05	4.28	13.09	21.43	0.012	12.95
10/11/2016	23.77	0.00	0.00	0.258	24.03	0.283	0.258	0.013	0.000	0.657	1.113	4.95	0.00	4.32	12.43	5.49	4.34	14.20	24.03	0.013	13.94
10/12/2016	23.91	0.00	0.00	0.270	24.18	0.313	0.270	0.015	0.000	0.727	0.965	3.08	0.00	5.10	13.71	3.66	5.11	15.40	24.18	0.015	15.13
10/13/2016	23.82	0.00	0.00	0.266	24.09	0.285	0.266	0.013	0.000	0.660	1.060	4.92	0.00	4.95	11.93	5.47	4.96	13.65	24.09	0.013	13.39
10/14/2016	24.11	0.00	0.00	0.265	24.38	0.597	0.265	0.028	0.000	1.385	0.968	4.11	0.00	4.79	12.24	4.97	4.81	14.59	24.38	0.028	14.32
10/15/2016	22.46	0.00	0.00	0.259	22.72	0.272	0.259	0.013	0.000	0.631	1.048	4.41	0.00	5.13	10.96	4.94	5.14	12.64	22.72	0.013	12.38
10/16/2016	24.03	0.00	0.00	0.226	24.26	0.597	0.226	0.028	0.000	1.385	0.962	4.12	0.00	5.12	11.82	4.94	5.15	14.16	24.26	0.028	13.94
10/17/2016	23.17	0.00	0.00	0.217	23.39	0.516	0.217	0.024	0.000	1.197	0.860	4.16	0.00	4.94	11.47	4.89	4.97	13.52	23.39	0.024	13.31
10/18/2016	25.10	0.00	0.00	0.282	25.38	1.053	0.282	0.050	0.000	2.444	1.056	4.36	0.00	4.73	11.40	5.70	4.78	14.90	25.38	0.050	14.62
10/19/2016	23.54	0.00	0.00	0.243	23.78	0.741	0.243	0.035	0.000	1.719	0.685	3.95	0.00	4.67	11.74	4.93	4.71	14.14	23.78	0.035	13.90

APPENDIX B – DAILY IBT AMOUNTS

	(1)	(2)	(3)	(4)	(5)=1+2 +3+4	(6)	(7)	(8)	(9)	(10)	(11)	(12)	(13)	(14)	(15)	(16)=6+7+1 2+13	(17)=8+9+ 14	(18)=10+ 11+15	(19)=16+1 7+18	(20)=8+9	(21)=18- 2-3-4
	Water Withdrawal/Purchase (mgd)				Consumptive Use (mgd)							Water Use Discharged as Wastewater (mgd)				Total Returned/Used in Each Basin (mgd)				Interbasin Transfer (mgd)	
	Jordan Lake Withdrawal	Neuse Basin Purchase			Total System Use	Haw		Cape Fear		Neuse		Haw		Cape Fear	Neuse	Haw	Cape Fear	Neuse	Total for All Basins	Haw to Cape Fear	Haw to Neuse
	Haw	Raleigh	Durham	Durham Co. Reclaimed		Potable	WRF Reuse	Potable	WRF Reuse	Potable	WRF Reuse	WTP Process Water	WRF	WRF	Total WRFs						
10/20/2016	26.65	0.00	0.00	0.280	26.93	1.530	0.280	0.072	0.000	3.550	0.816	4.62	0.00	4.64	11.42	6.43	4.71	15.79	26.93	0.072	15.51
10/21/2016	22.57	0.00	0.00	0.240	22.81	0.780	0.240	0.037	0.000	1.809	0.702	3.71	0.00	4.60	10.93	4.73	4.64	13.44	22.81	0.037	13.20
10/22/2016	22.51	0.00	0.00	0.287	22.80	1.012	0.287	0.048	0.000	2.349	1.073	3.14	0.00	4.75	10.14	4.44	4.80	13.56	22.80	0.048	13.27
10/23/2016	23.83	0.00	0.00	0.259	24.09	0.785	0.259	0.037	0.000	1.822	1.034	4.53	0.00	4.90	10.72	5.57	4.94	13.58	24.09	0.037	13.32
10/24/2016	23.91	0.00	0.00	0.227	24.14	1.256	0.227	0.059	0.000	2.913	0.913	3.29	0.00	4.63	10.85	4.77	4.69	14.67	24.14	0.059	14.45
10/25/2016	25.19	0.00	0.00	0.274	25.46	1.171	0.274	0.055	0.000	2.718	1.120	4.71	0.00	4.55	10.87	6.16	4.60	14.70	25.46	0.055	14.43
10/26/2016	25.73	0.00	0.00	0.239	25.97	1.689	0.239	0.080	0.000	3.918	0.611	3.93	0.00	4.59	10.91	5.86	4.67	15.44	25.97	0.080	15.20
10/27/2016	23.08	0.00	0.00	0.287	23.37	1.051	0.287	0.050	0.000	2.437	0.770	3.18	0.00	4.50	11.10	4.52	4.55	14.30	23.37	0.050	14.02
10/28/2016	25.38	0.00	0.00	0.316	25.70	1.427	0.316	0.067	0.000	3.311	0.648	5.05	0.00	4.42	10.46	6.79	4.48	14.42	25.70	0.067	14.10
10/29/2016	24.29	0.00	0.00	0.225	24.52	1.300	0.225	0.061	0.000	3.017	0.681	4.34	0.00	4.69	10.20	5.87	4.75	13.90	24.52	0.061	13.67
10/30/2016	25.54	0.00	0.00	0.244	25.78	1.325	0.244	0.062	0.000	3.073	0.680	4.81	0.00	4.90	10.69	6.38	4.97	14.44	25.78	0.062	14.20
10/31/2016	23.58	0.00	0.00	0.340	23.92	1.305	0.340	0.061	0.000	3.026	0.588	3.78	0.00	4.50	10.32	5.42	4.56	13.94	23.92	0.061	13.60
11/1/2016	22.01	0.00	0.00	0.334	22.34	1.095	0.334	0.052	0.000	2.541	0.741	2.58	0.00	4.50	10.50	4.01	4.55	13.78	22.34	0.052	13.45
11/2/2016	25.27	0.00	0.00	0.250	25.52	1.331	0.250	0.063	0.000	3.087	0.647	4.72	0.00	4.40	11.02	6.30	4.46	14.76	25.52	0.063	14.51
11/3/2016	23.64	0.00	0.00	0.260	23.90	1.319	0.260	0.062	0.000	3.060	0.740	3.60	0.00	4.32	10.54	5.18	4.39	14.33	23.90	0.062	14.07
11/4/2016	21.28	0.00	1.98	0.239	23.50	1.245	0.239	0.059	0.000	2.887	0.617	4.09	0.00	4.13	10.24	5.57	4.19	13.74	23.50	0.059	11.52
11/5/2016	22.71	0.00	2.14	0.202	25.05	1.535	0.202	0.072	0.000	3.560	0.732	4.50	0.00	4.35	10.10	6.24	4.42	14.39	25.05	0.072	12.05
11/6/2016	23.21	0.00	2.37	0.191	25.77	1.513	0.191	0.071	0.000	3.511	0.667	4.10	0.00	4.71	11.00	5.80	4.78	15.18	25.77	0.071	12.62
11/7/2016	20.68	0.00	2.25	0.244	23.18	1.054	0.244	0.050	0.000	2.446	0.603	3.79	0.00	4.68	10.31	5.09	4.73	13.35	23.18	0.050	10.86
11/8/2016	21.27	0.00	1.48	0.202	22.95	1.133	0.202	0.053	0.000	2.628	0.690	3.48	0.00	4.10	10.66	4.81	4.16	13.98	22.95	0.053	12.30
11/9/2016	20.53	0.00	2.13	0.148	22.81	0.944	0.148	0.045	0.000	2.191	0.794	3.28	0.00	4.45	10.96	4.37	4.49	13.94	22.81	0.045	11.67
11/10/2016	20.67	0.00	2.15	0.172	23.00	1.284	0.172	0.061	0.000	2.979	0.705	3.15	0.00	4.30	10.35	4.61	4.36	14.03	23.00	0.061	11.70
11/11/2016	20.23	0.00	1.90	0.173	22.31	0.705	0.173	0.033	0.000	1.636	0.607	4.46	0.00	4.43	10.26	5.34	4.46	12.51	22.31	0.033	10.43
11/12/2016	21.51	0.00	1.52	0.137	23.17	1.400	0.137	0.066	0.000	3.247	0.569	3.31	0.00	4.53	9.91	4.85	4.59	13.73	23.17	0.066	12.07
11/13/2016	19.74	0.00	1.33	0.113	21.19	0.697	0.113	0.033	0.000	1.618	0.550	2.93	0.00	4.76	10.48	3.74	4.80	12.65	21.19	0.033	11.20
11/14/2016	20.21	0.00	1.34	0.103	21.65	0.687	0.103	0.032	0.000	1.595	0.499	3.31	0.00	4.73	10.70	4.10	4.76	12.79	21.65	0.032	11.35
11/15/2016	21.03	0.00	0.00	0.129	21.16	0.237	0.129	0.011	0.000	0.549	0.490	5.22	0.00	3.99	10.53	5.59	4.00	11.57	21.16	0.011	11.44
11/16/2016	23.11	0.00	0.00	0.139	23.25	1.229	0.139	0.058	0.000	2.852	0.493	3.15	0.00	4.40	10.93	4.52	4.46	14.27	23.25	0.058	14.13
11/17/2016	20.25	0.00	0.00	0.136	20.39	0.473	0.136	0.022	0.000	1.098	0.525	3.45	0.00	4.27	10.41	4.06	4.29	12.03	20.39	0.022	11.90
11/18/2016	20.80	0.00	0.00	0.123	20.92	0.572	0.123	0.027	0.000	1.326	0.549	3.64	0.00	4.28	10.40	4.33	4.31	12.28	20.92	0.027	12.15
11/19/2016	21.81	0.00	0.00	0.107	21.92	0.977	0.107	0.046	0.000	2.268	0.538	3.05	0.00	4.61	10.32	4.13	4.65	13.13	21.92	0.046	13.02
11/20/2016	21.26	0.00	0.00	0.090	21.35	0.642	0.090	0.030	0.000	1.490	0.543	3.16	0.00	4.82	10.57	3.89	4.85	12.61	21.35	0.030	12.52
11/21/2016	20.46	0.00	0.00	0.103	20.56	0.258	0.103	0.012	0.000	0.598	0.549	3.19	0.00	4.49	11.37	3.55	4.50	12.51	20.56	0.012	12.41
11/22/2016	22.23	0.00	0.00	0.105	22.34	0.275	0.105	0.013	0.000	0.637	0.488	3.85	0.00	4.19	12.78	4.23	4.20	13.91	22.34	0.013	13.80
11/23/2016	20.15	0.00	0.00	0.062	20.21	0.250	0.062	0.012	0.000	0.579	0.536	3.40	0.00	4.23	11.15	3.71	4.24	12.26	20.21	0.012	12.20
11/24/2016	21.44	0.00	0.00	0.058	21.50	1.002	0.058	0.047	0.000	2.325	0.505	3.37	0.00	4.46	9.73	4.43	4.51	12.56	21.50	0.047	12.50
11/25/2016	18.29	0.00	0.00	0.069	18.36	0.526	0.069	0.025	0.000	1.220	0.535	2.78	0.00	4.02	9.19	3.38	4.04	10.94	18.36	0.025	10.87
11/26/2016	19.86	0.00	0.00	0.075	19.94	0.690	0.075	0.033	0.000	1.600	0.516	3.16	0.00	4.20	9.66	3.92	4.23	11.78	19.94	0.033	11.71
11/27/2016	20.12	0.00	0.00	0.057	20.18	0.561	0.057	0.026	0.000	1.302	0.510	3.15	0.00	5.05	9.52	3.77	5.08	11.33	20.18	0.026	11.27
11/28/2016	20.91	0.00	0.00	0.066	20.98	0.252	0.066	0.012	0.000	0.584	0.506	4.03	0.00	4.73	10.79	4.35	4.75	11.88	20.98	0.012	11.82
11/29/2016	19.60	0.00	0.00	0.123	19.72	0.342	0.123	0.016	0.000	0.793	0.534	2.69	0.00	4.62	10.60	3.16	4.64	11.93	19.72	0.016	11.81
11/30/2016	20.76	0.00	0.00	0.120	20.88	0.432	0.120	0.020	0.000	1.003	0.611	4.19	0.00	3.39	11.11	4.74	3.41	12.73	20.88	0.020	12.61



APPENDIX B – DAILY IBT AMOUNTS

	(1)	(2)	(3)	(4)	(5)=1+2 +3+4	(6)	(7)	(8)	(9)	(10)	(11)	(12)	(13)	(14)	(15)	(16)=6+7+1 2+13	(17)=8+9+ 14	(18)=10+ 11+15	(19)=16+1 7+18	(20)=8+9	(21)=18- 2-3-4
	Water Withdrawal/Purchase (mgd)				Consumptive Use (mgd)							Water Use Discharged as Wastewater (mgd)				Total Returned/Used in Each Basin (mgd)				Interbasin Transfer (mgd)	
	Jordan Lake Withdrawal	Neuse Basin Purchase			Total System Use	Haw		Cape Fear		Neuse		Haw		Cape Fear	Neuse	Haw	Cape Fear	Neuse	Total for All Basins	Haw to Cape Fear	Haw to Neuse
	Haw	Raleigh	Durham	Durham Co. Reclaimed		Potable	WRF Reuse	Potable	WRF Reuse	Potable	WRF Reuse	WTP Process Water	WRF	WRF	Total WRFs						
12/1/2016	20.85	0.00	0.00	0.122	20.97	0.493	0.122	0.023	0.000	1.145	0.581	2.89	0.00	5.45	10.27	3.51	5.47	12.00	20.97	0.023	11.87
12/2/2016	20.08	0.00	0.00	0.106	20.19	0.493	0.106	0.023	0.000	1.143	0.505	3.59	0.00	4.28	10.05	4.19	4.30	11.70	20.19	0.023	11.59
12/3/2016	18.53	0.00	0.00	0.093	18.62	0.229	0.093	0.011	0.000	0.531	0.495	3.21	0.00	4.32	9.74	3.53	4.33	10.76	18.62	0.011	10.67
12/4/2016	19.46	0.00	0.00	0.086	19.55	0.245	0.086	0.012	0.000	0.569	0.496	3.03	0.00	4.69	10.42	3.36	4.70	11.48	19.55	0.012	11.39
12/5/2016	20.91	0.00	0.00	0.098	21.01	0.258	0.098	0.012	0.000	0.599	0.455	3.63	0.00	4.98	10.97	3.99	4.99	12.03	21.01	0.012	11.93
12/6/2016	20.04	0.00	0.00	0.089	20.13	0.249	0.089	0.012	0.000	0.579	0.471	3.33	0.00	4.75	10.65	3.67	4.76	11.70	20.13	0.012	11.61
12/7/2016	18.60	0.00	0.00	0.086	18.69	0.236	0.086	0.011	0.000	0.547	0.511	2.80	0.00	4.21	10.29	3.12	4.22	11.35	18.69	0.011	11.26
12/8/2016	19.64	0.00	0.00	0.086	19.73	0.241	0.086	0.011	0.000	0.559	0.462	3.51	0.00	4.45	10.41	3.84	4.46	11.43	19.73	0.011	11.35
12/9/2016	19.30	0.00	0.00	0.087	19.39	0.233	0.087	0.011	0.000	0.541	0.479	3.68	0.00	4.36	9.99	4.00	4.37	11.01	19.39	0.011	10.93
12/10/2016	18.71	0.00	0.00	0.073	18.78	0.237	0.073	0.011	0.000	0.549	0.494	2.85	0.00	4.54	10.03	3.16	4.55	11.07	18.78	0.011	11.00
12/11/2016	19.74	0.00	0.00	0.073	19.81	0.252	0.073	0.012	0.000	0.584	0.502	2.85	0.00	4.77	10.77	3.17	4.78	11.86	19.81	0.012	11.78
12/12/2016	19.44	0.00	0.00	0.076	19.52	0.281	0.076	0.013	0.000	0.651	0.468	2.69	0.00	4.68	10.66	3.05	4.69	11.78	19.52	0.013	11.70
12/13/2016	21.32	0.00	0.00	0.077	21.40	0.633	0.077	0.030	0.000	1.467	0.485	3.29	0.00	4.56	10.86	4.00	4.59	12.81	21.40	0.030	12.73
12/14/2016	19.83	0.00	0.00	0.080	19.91	0.249	0.080	0.012	0.000	0.577	0.486	3.16	0.00	4.51	10.83	3.49	4.53	11.89	19.91	0.012	11.81
12/15/2016	19.75	0.00	0.00	0.077	19.83	0.234	0.077	0.011	0.000	0.543	0.479	4.07	0.00	4.26	10.15	4.38	4.27	11.17	19.83	0.011	11.10
12/16/2016	19.90	0.00	0.00	0.071	19.97	0.236	0.071	0.011	0.000	0.546	0.511	4.11	0.00	4.21	10.27	4.42	4.22	11.33	19.97	0.011	11.26
12/17/2016	20.13	0.00	0.00	0.062	20.19	0.231	0.062	0.011	0.000	0.536	0.500	4.63	0.00	4.42	9.80	4.92	4.44	10.83	20.19	0.011	10.77
12/18/2016	19.69	0.00	0.00	0.095	19.79	0.243	0.095	0.011	0.000	0.563	0.476	3.43	0.00	4.70	10.27	3.77	4.71	11.31	19.79	0.011	11.21
12/19/2016	21.50	0.00	0.00	0.097	21.60	0.257	0.097	0.012	0.000	0.597	0.474	4.26	0.00	4.62	11.28	4.61	4.64	12.35	21.60	0.012	12.25
12/20/2016	20.14	0.00	0.00	0.074	20.21	0.250	0.074	0.012	0.000	0.579	0.456	3.41	0.00	4.61	10.82	3.73	4.63	11.85	20.21	0.012	11.78
12/21/2016	19.62	0.00	0.00	0.066	19.69	0.239	0.066	0.011	0.000	0.555	0.486	3.58	0.00	4.29	10.46	3.89	4.30	11.50	19.69	0.011	11.44
12/22/2016	19.18	0.00	0.00	0.080	19.26	0.240	0.080	0.011	0.000	0.558	0.475	3.07	0.00	4.27	10.56	3.39	4.28	11.59	19.26	0.011	11.51
12/23/2016	21.01	0.00	0.00	0.080	21.09	0.451	0.080	0.021	0.000	1.047	0.486	4.20	0.00	4.37	10.44	4.73	4.39	11.97	21.09	0.021	11.89
12/24/2016	18.91	0.00	0.00	0.074	18.98	0.236	0.074	0.011	0.000	0.547	0.468	3.11	0.00	4.34	10.20	3.42	4.35	11.22	18.98	0.011	11.14
12/25/2016	17.65	0.00	0.00	0.077	17.73	0.277	0.077	0.013	0.000	0.641	0.458	2.90	0.00	4.22	9.14	3.25	4.23	10.24	17.73	0.013	10.17
12/26/2016	16.60	0.00	0.00	0.081	16.68	0.199	0.081	0.009	0.000	0.462	0.470	3.27	0.00	3.76	8.43	3.55	3.77	9.36	16.68	0.009	9.28
12/27/2016	18.73	0.00	0.00	0.074	18.80	0.224	0.074	0.011	0.000	0.521	0.468	3.69	0.00	4.10	9.72	3.99	4.11	10.71	18.80	0.011	10.63
12/28/2016	19.97	0.00	0.00	0.085	20.06	0.543	0.085	0.026	0.000	1.260	0.482	3.40	0.00	4.18	10.08	4.03	4.20	11.83	20.06	0.026	11.74
12/29/2016	18.44	0.00	0.00	0.072	18.51	0.221	0.072	0.010	0.000	0.512	0.496	3.66	0.00	3.91	9.63	3.95	3.92	10.64	18.51	0.010	10.57
12/30/2016	18.84	0.00	0.00	0.086	18.93	0.231	0.086	0.011	0.000	0.535	0.531	3.40	0.00	4.25	9.88	3.72	4.26	10.95	18.93	0.011	10.86
12/31/2016	18.27	0.00	0.00	0.066	18.34	0.224	0.066	0.011	0.000	0.520	0.468	3.23	0.00	4.20	9.62	3.52	4.21	10.61	18.34	0.011	10.54