

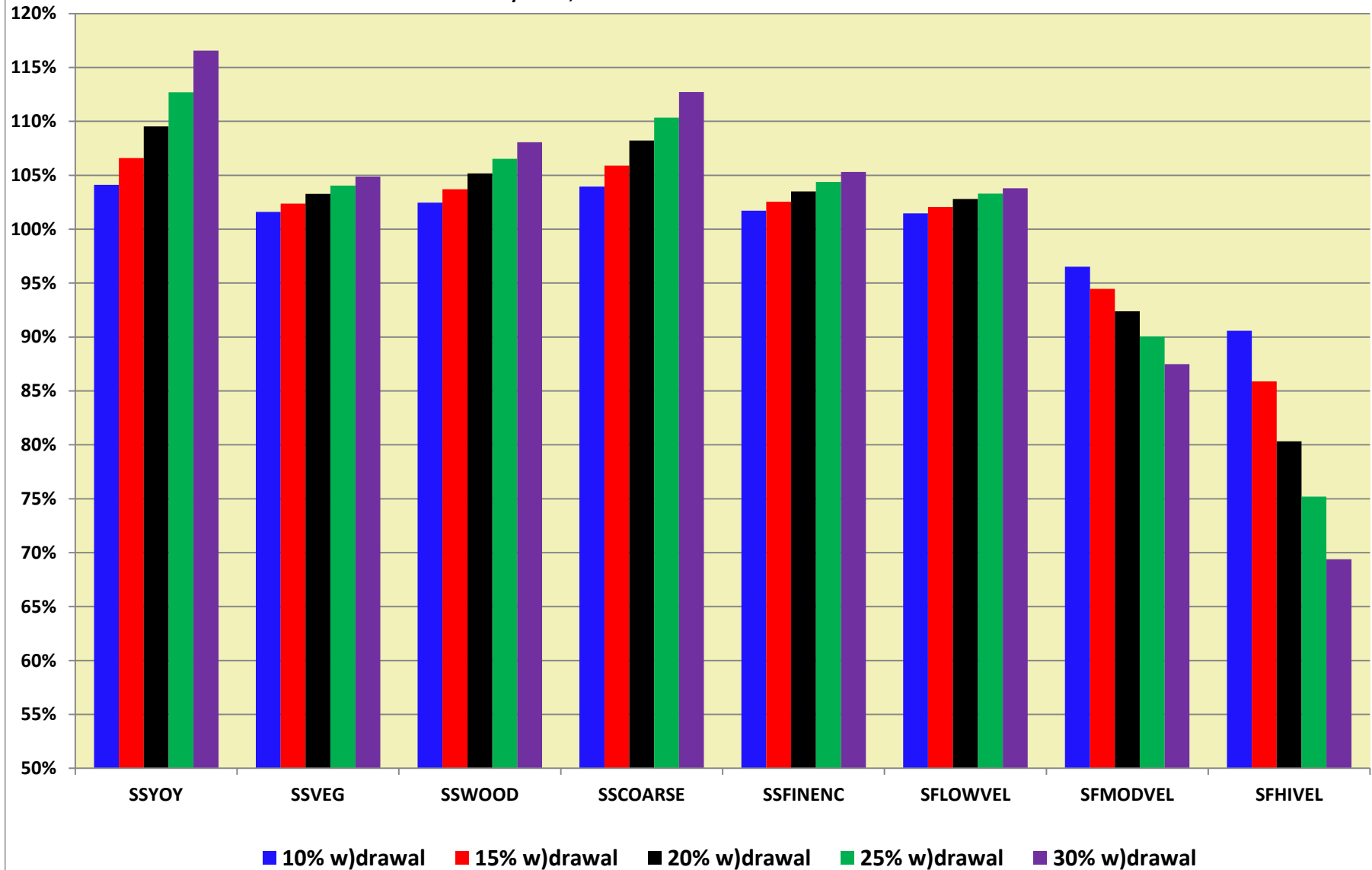
**ENO RIVER STATE PARK SITE TIME SERIES ANALYSIS FOR SHALLOW SLOW/FAST GUILDS**

abbreviation	organism	based on
<b>SSYOY</b>	shallow slow, young of year guild	bluehead chub YOY
<b>SSVEG</b>	shallow slow, aquatic vegetation cover guild	silver redhorse YOY, veg cover
<b>SSWOOD</b>	shallow slow, woody debris cover guild	silver redhorse YOY, woody cover
<b>SSCOARSE</b>	shallow slow, coarse substrate	generic
<b>SSFINENC</b>	shallow slow, fine substrate, no cover guild	redbreast sunfish spawning
<b>SFLOWVEL</b>	shallow fast lower velocity guild	marginated madtom adult
<b>SFMODVEL</b>	shallow fast moderate velocity guild	generic
<b>SFHIVEL</b>	shallow fast higher velocity guild	fantail darter adult
<b>unused</b>	unused	

# JANUARY - Shallow Guilds, Eno River State Park Site

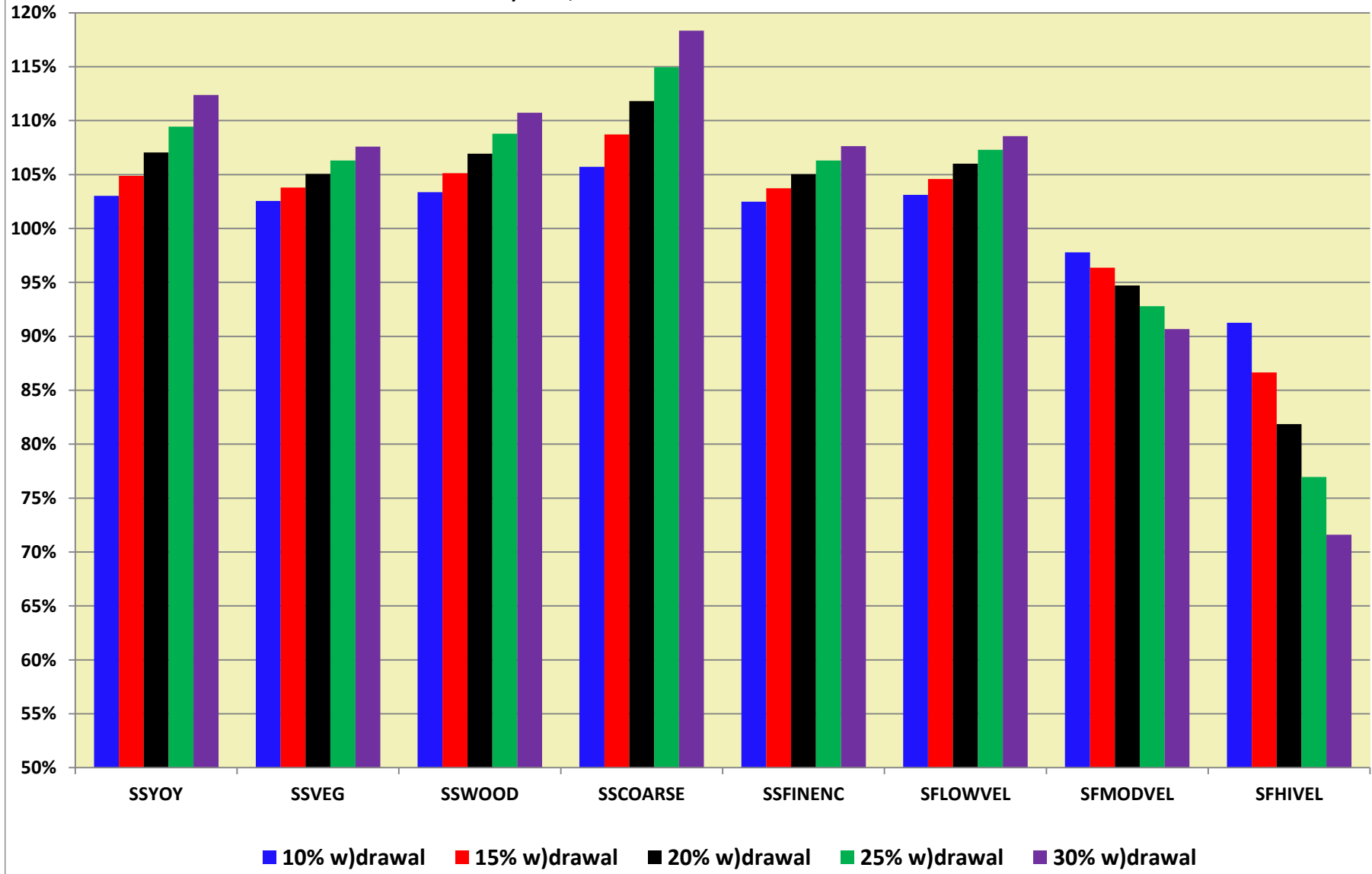
## % Inflow Approach - Habitat Effect as % of Unregulated Habitat

Based on daily flows, Index B = Mean of habitat events between 10% and 90% exceedance



**FEBRUARY - Shallow Guilds, Eno River State Park Site**  
**% Inflow Approach - Habitat Effect as % of Unregulated Habitat**

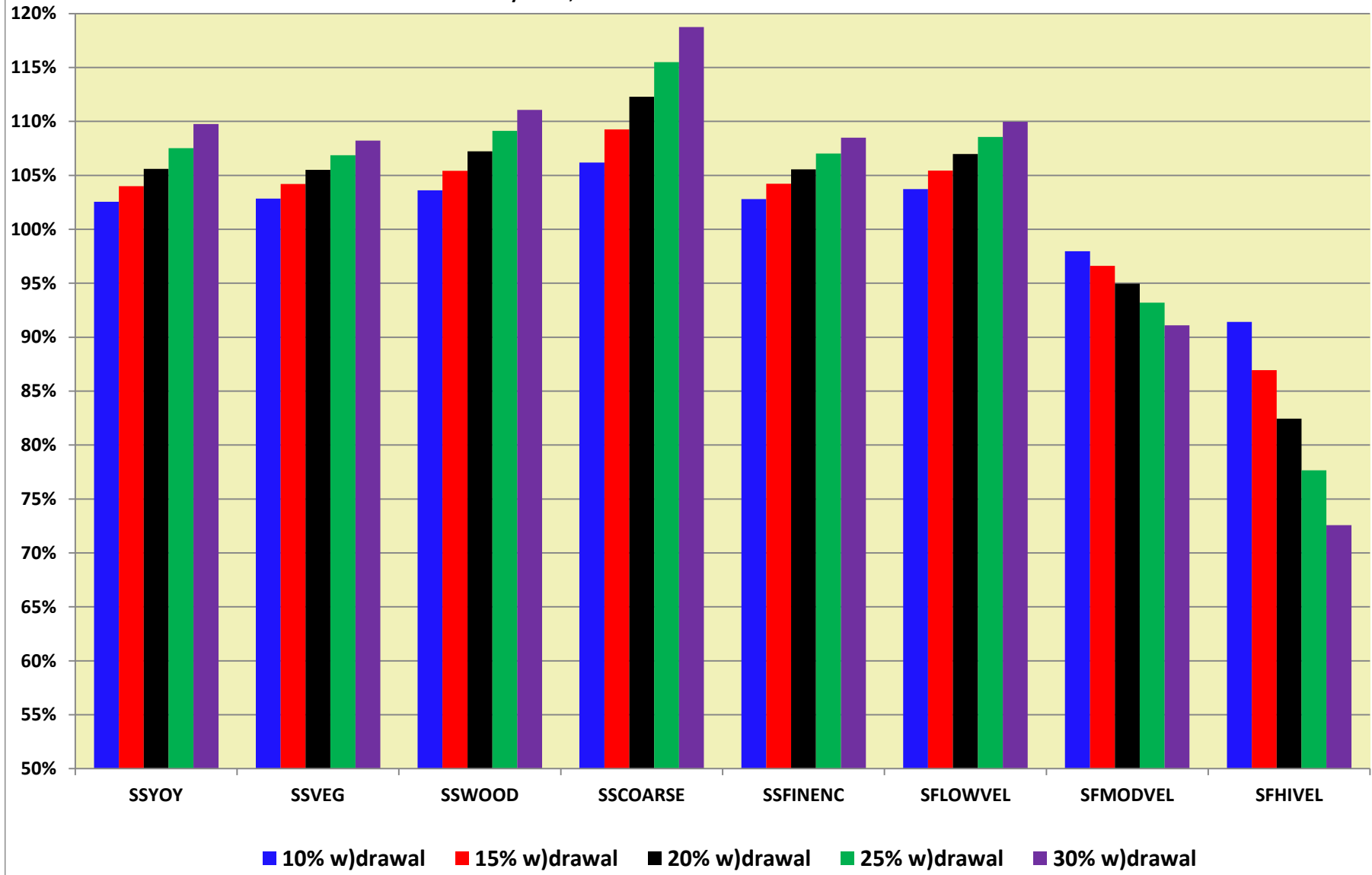
Based on daily flows, Index B = Mean of habitat events between 10% and 90% exceedance



# MARCH - Shallow Guilds, Eno River State Park Site

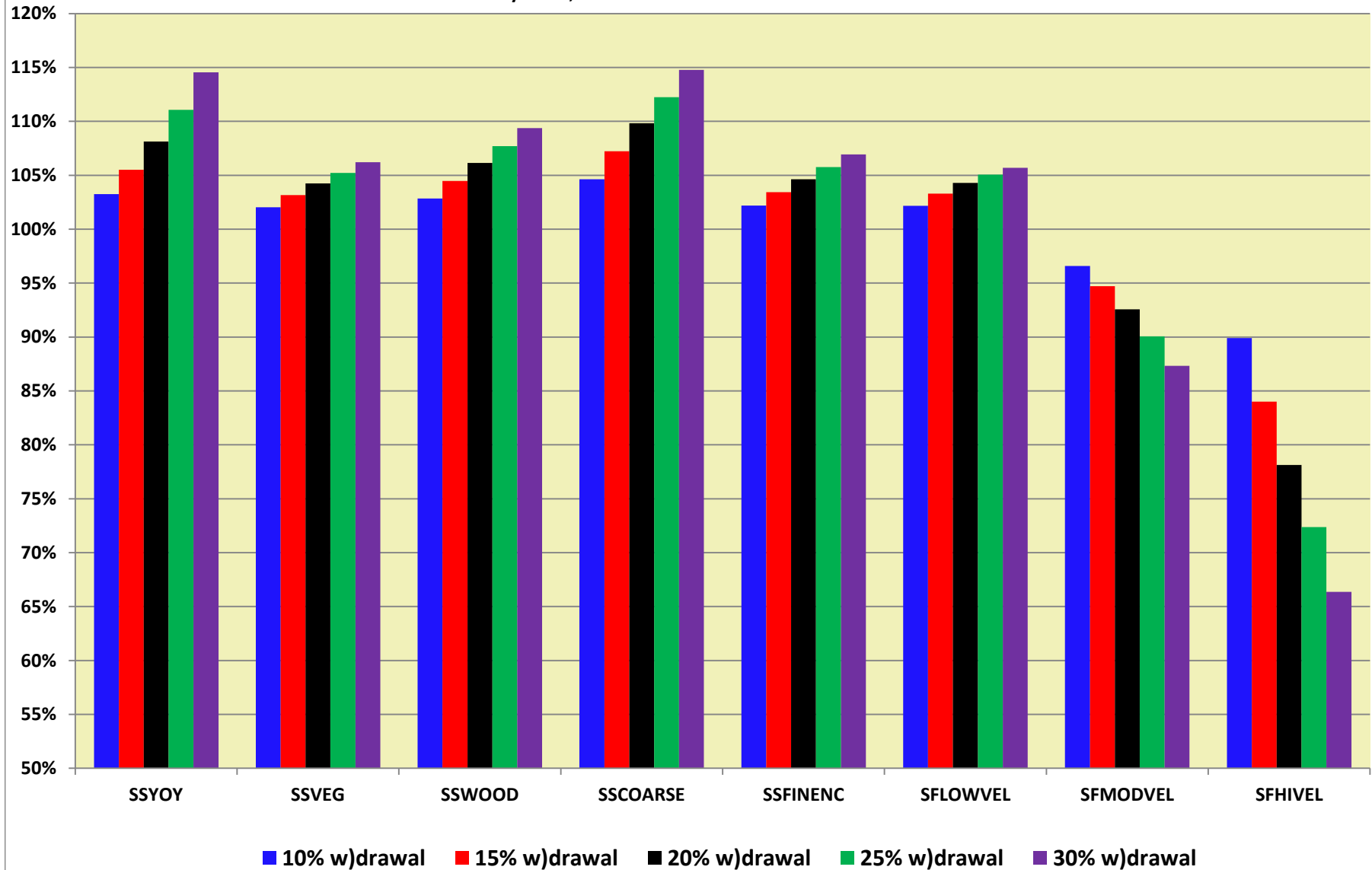
## % Inflow Approach - Habitat Effect as % of Unregulated Habitat

Based on daily flows, Index B = Mean of habitat events between 10% and 90% exceedance



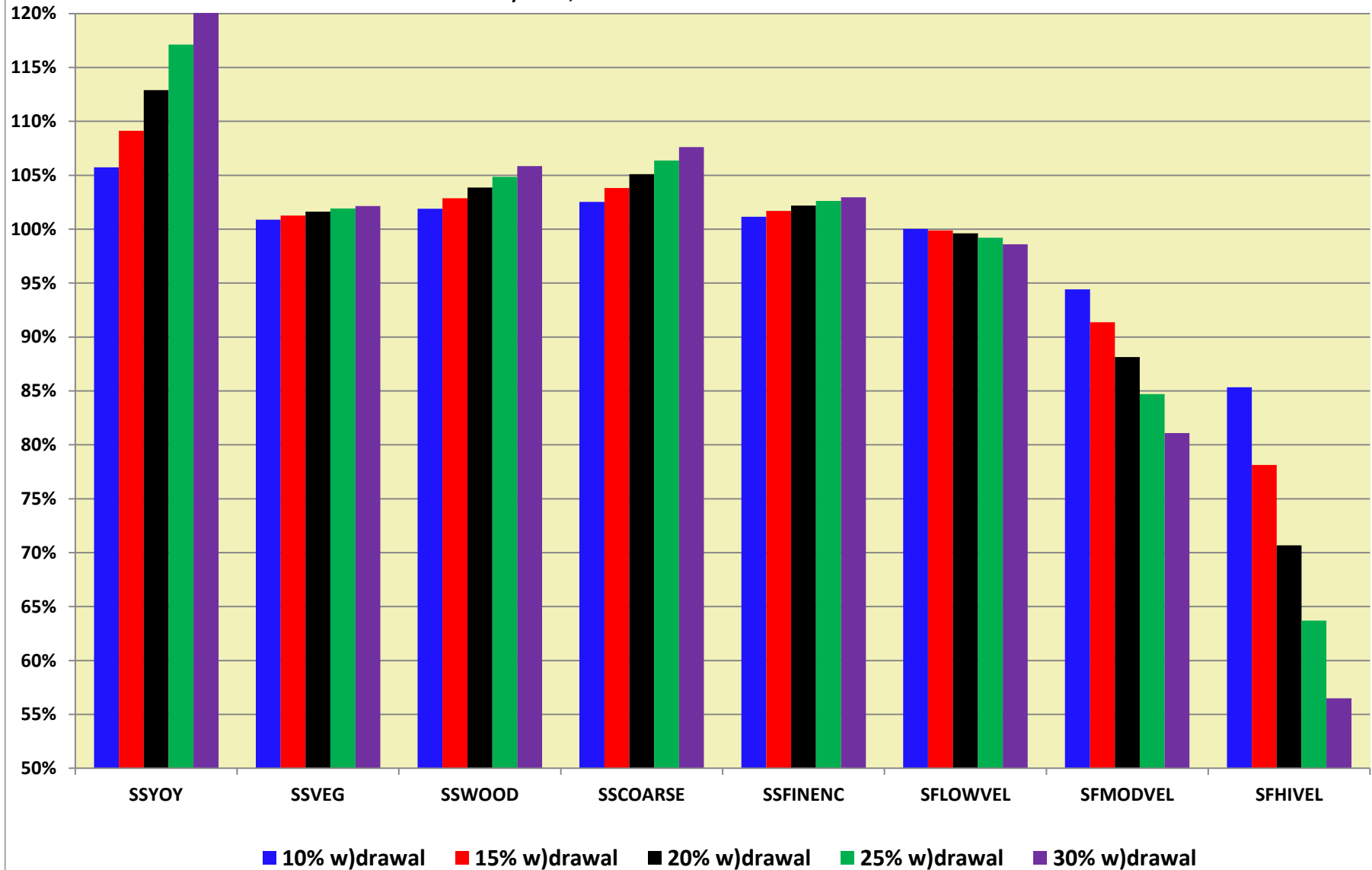
**APRIL - Shallow Guilds, Eno River State Park Site**  
**% Inflow Approach - Habitat Effect as % of Unregulated Habitat**

Based on daily flows, Index B = Mean of habitat events between 10% and 90% exceedance



**MAY - Shallow Guilds, Eno River State Park Site**  
**% Inflow Approach - Habitat Effect as % of Unregulated Habitat**

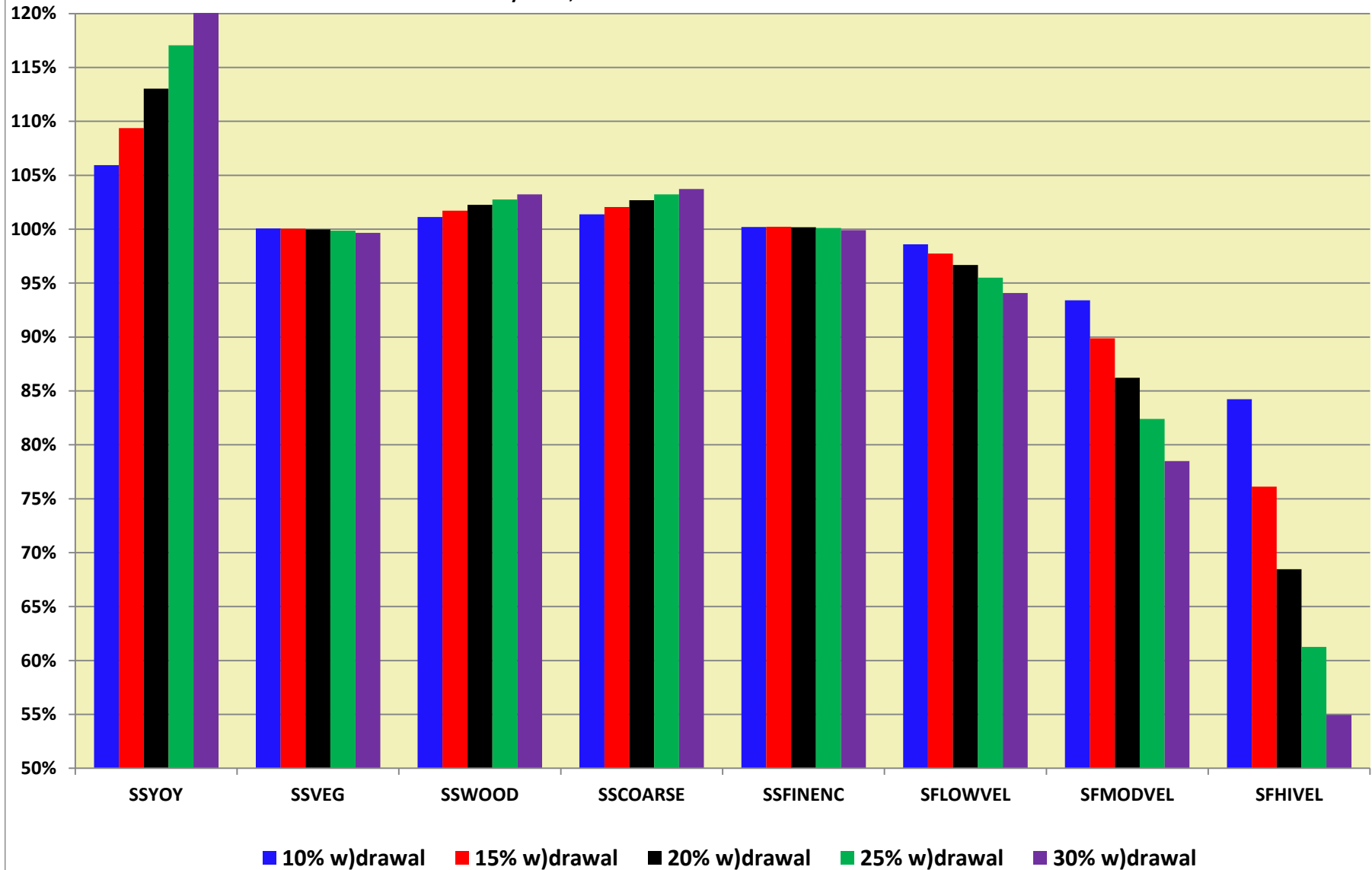
Based on daily flows, Index B = Mean of habitat events between 10% and 90% exceedance



# JUNE - Shallow Guilds, Eno River State Park Site

## % Inflow Approach - Habitat Effect as % of Unregulated Habitat

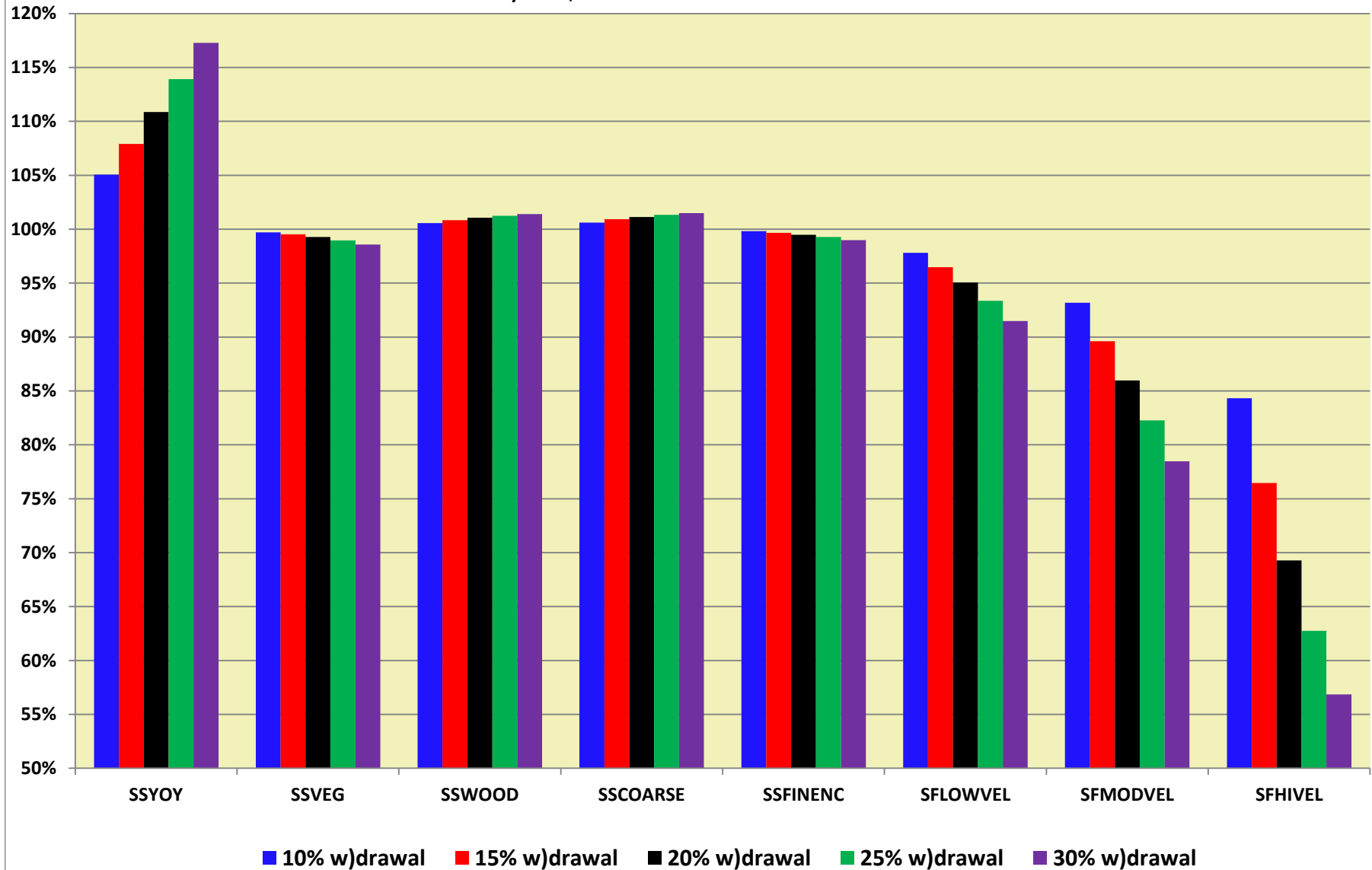
Based on daily flows, Index B = Mean of habitat events between 10% and 90% exceedance



# JULY - Shallow Guilds, Eno River State Park Site

## % Inflow Approach - Habitat Effect as % of Unregulated Habitat

Based on daily flows, Index B = Mean of habitat events between 10% and 90% exceedance

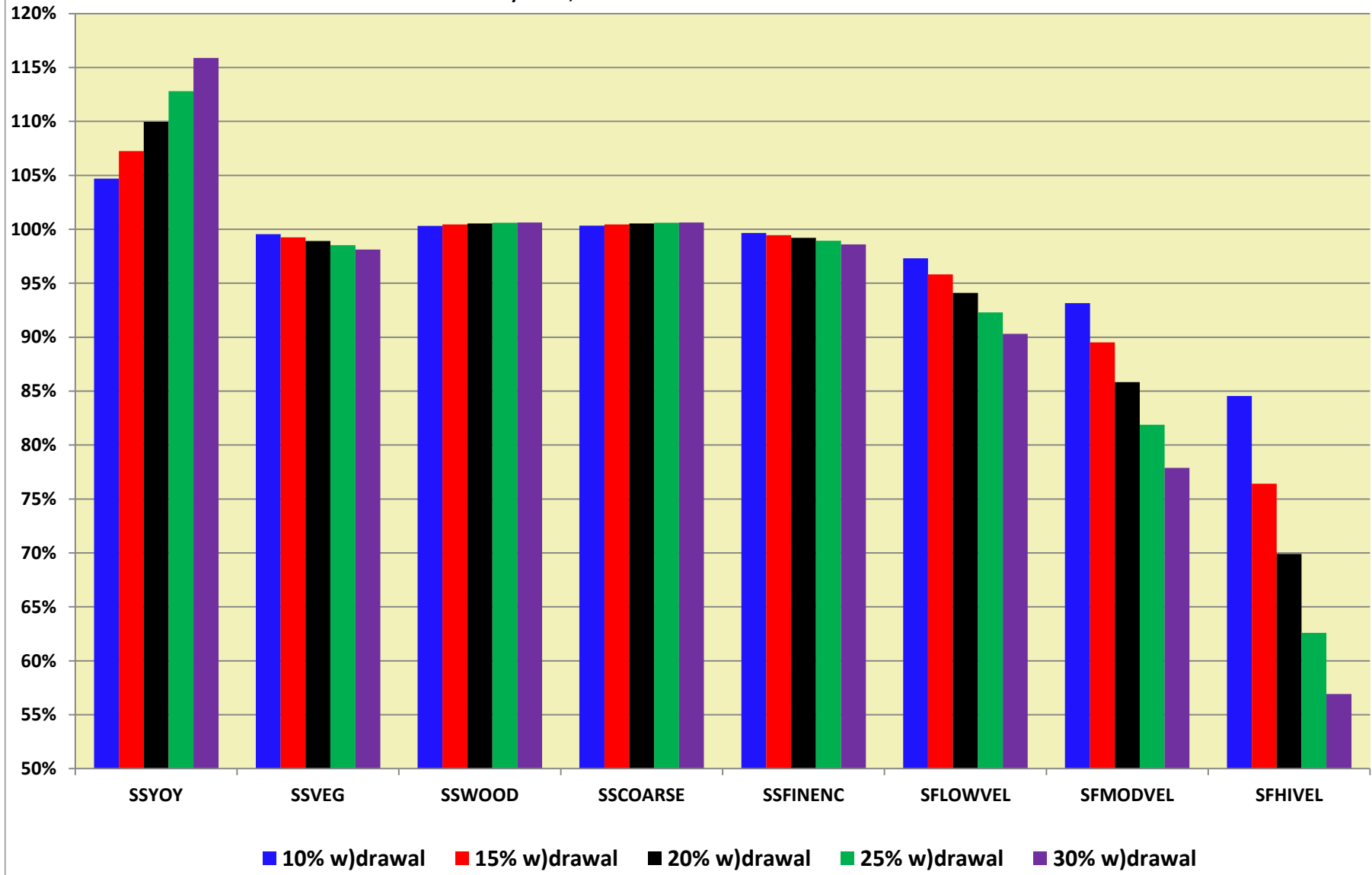




# AUGUST - Shallow Guilds, Eno River State Park Site

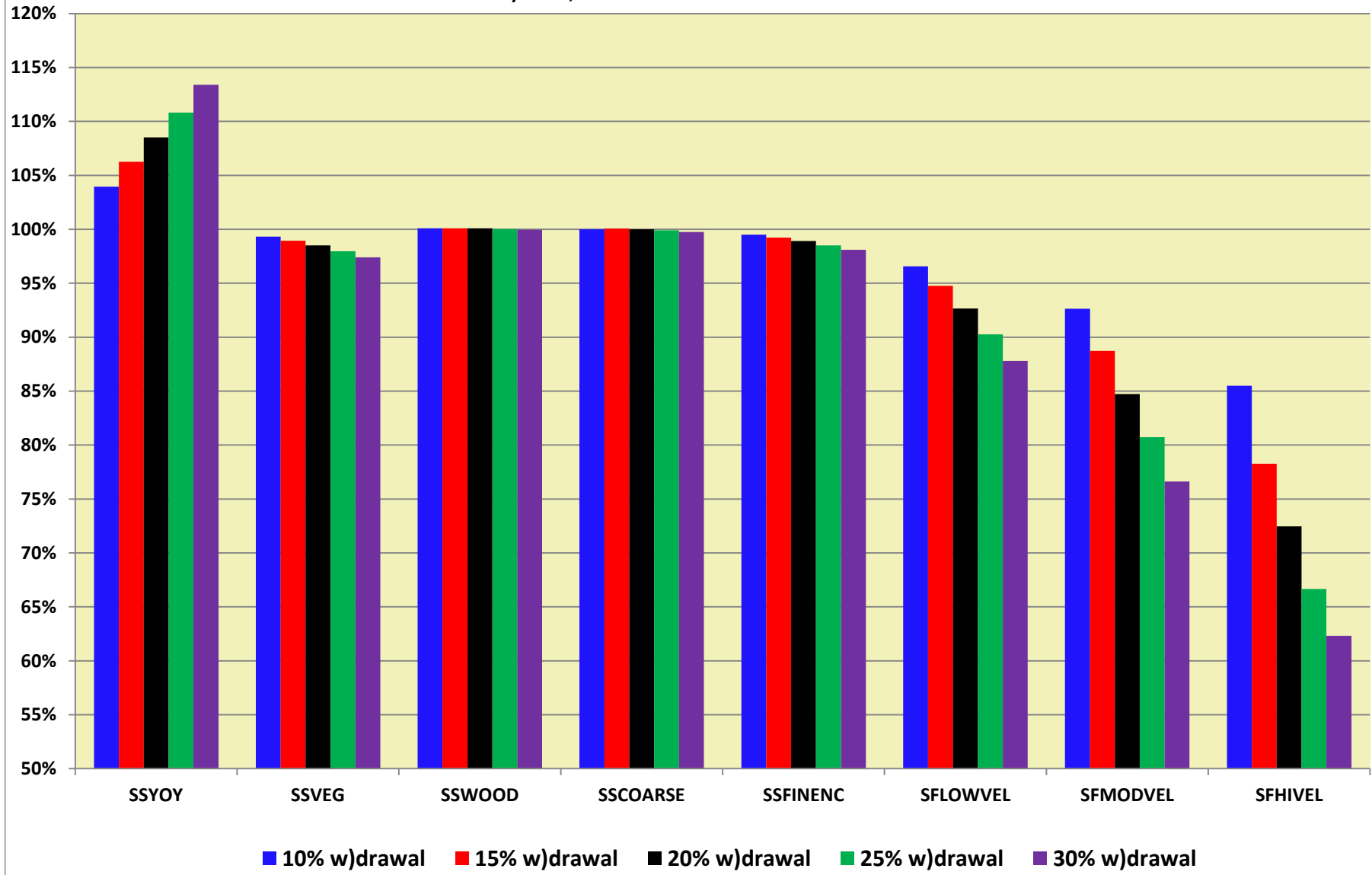
## % Inflow Approach - Habitat Effect as % of Unregulated Habitat

Based on daily flows, Index B = Mean of habitat events between 10% and 90% exceedance



**SEPTEMBER - Shallow Guilds, Eno River State Park Site**  
**% Inflow Approach - Habitat Effect as % of Unregulated Habitat**

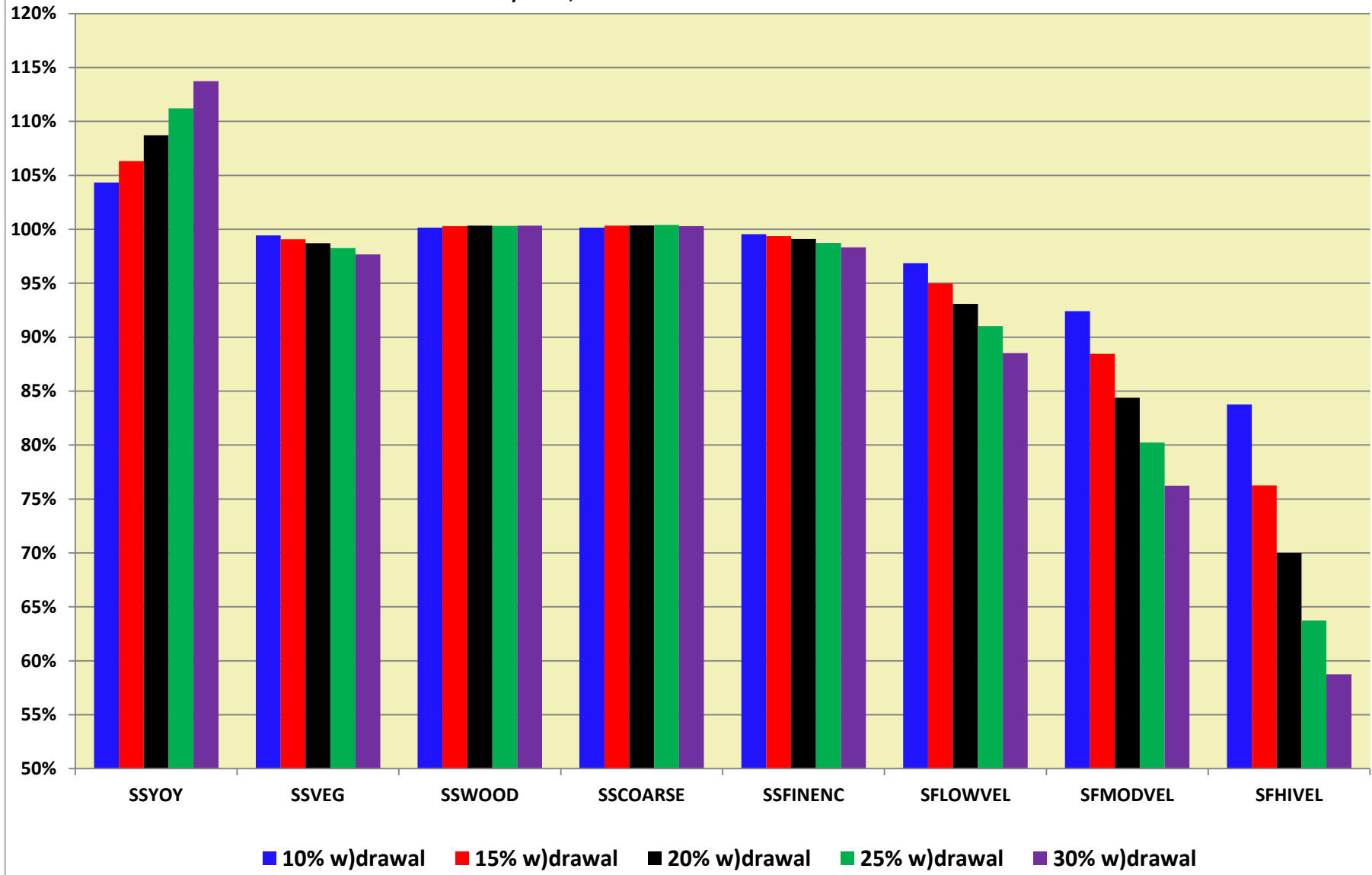
Based on daily flows, Index B = Mean of habitat events between 10% and 90% exceedance



# OCTOBER - Shallow Guilds, Eno River State Park Site

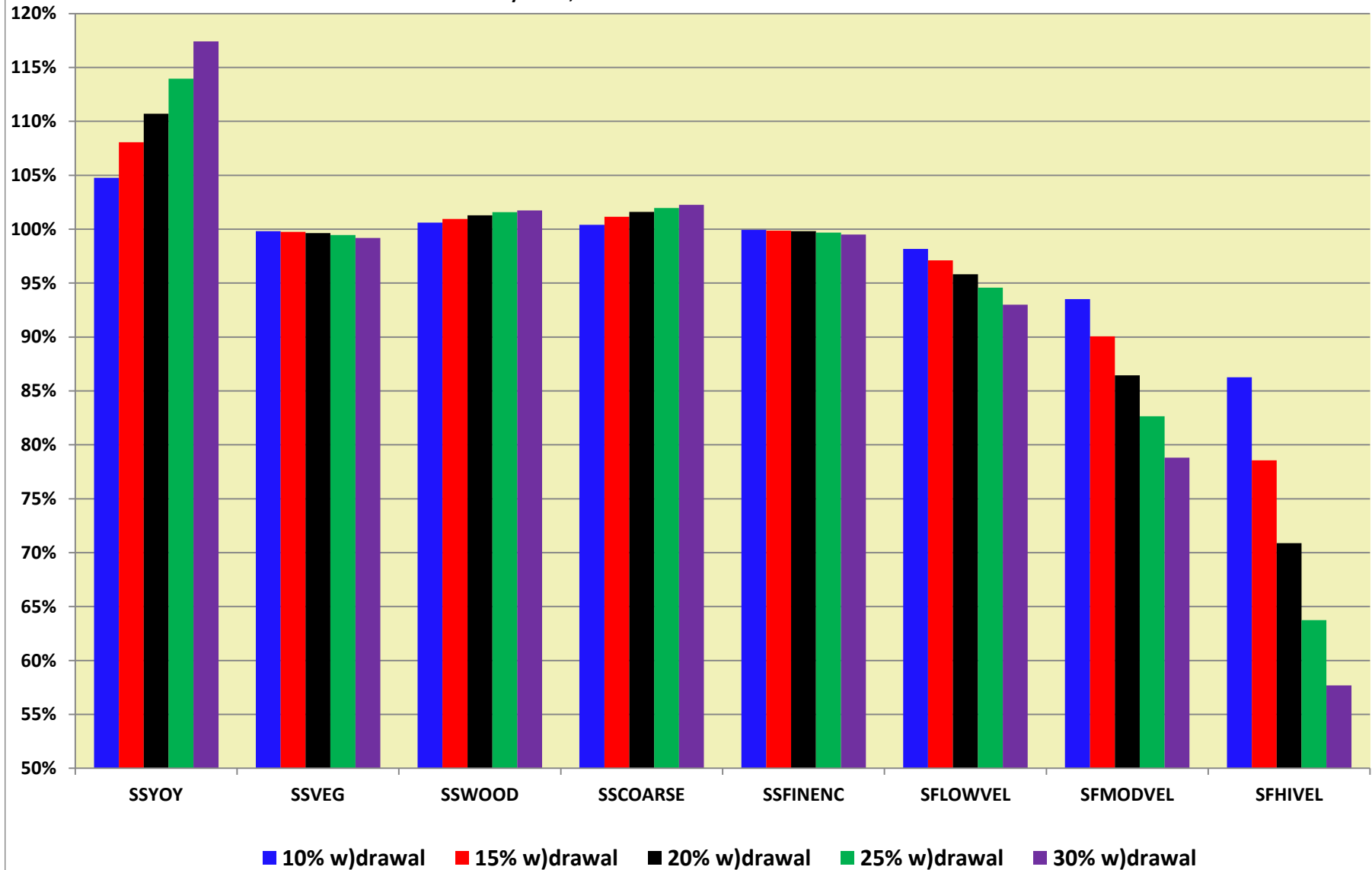
## % Inflow Approach - Habitat Effect as % of Unregulated Habitat

Based on daily flows, Index B = Mean of habitat events between 10% and 90% exceedance



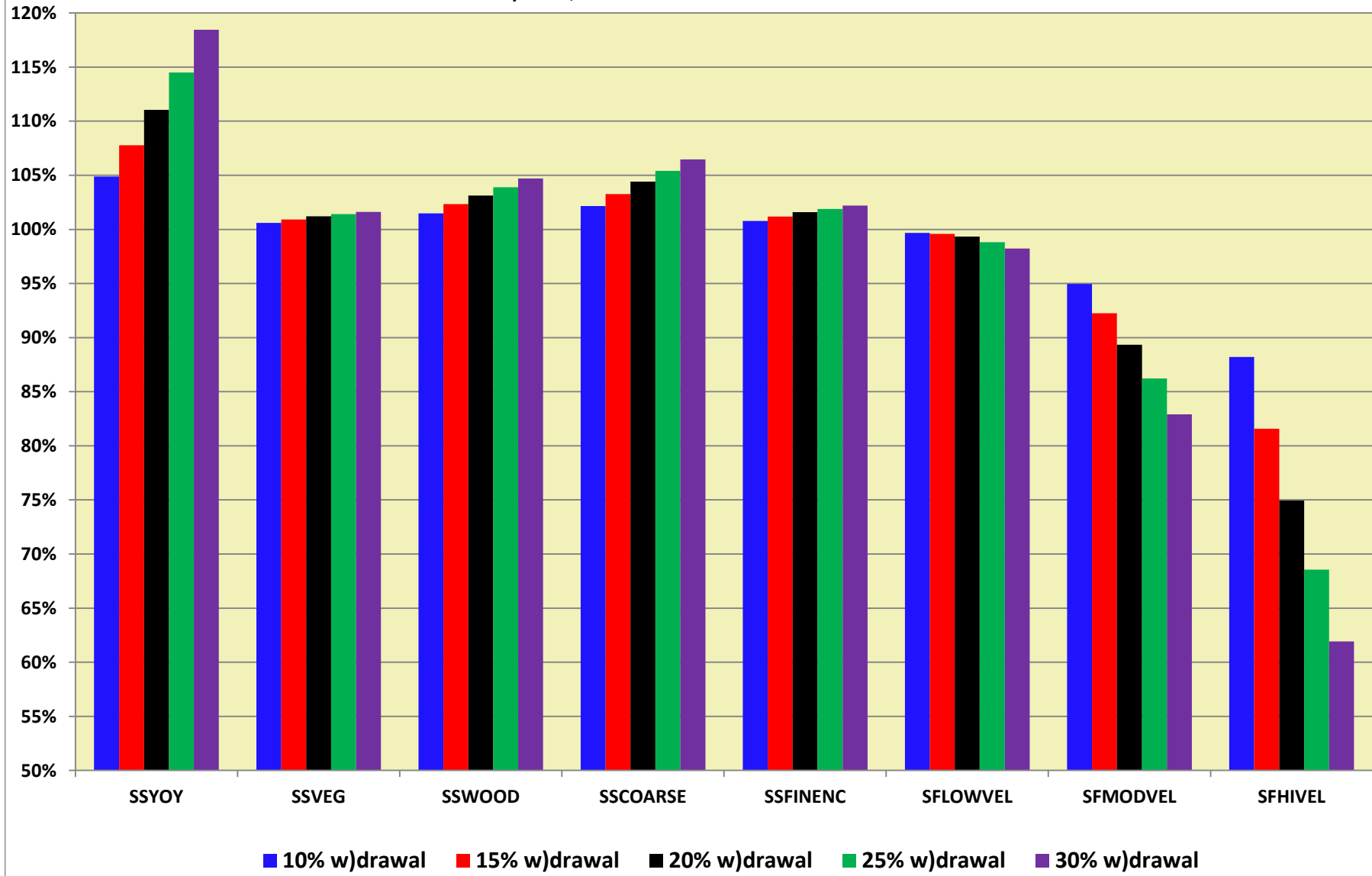
**NOVEMBER - Shallow Guilds, Eno River State Park Site**  
**% Inflow Approach - Habitat Effect as % of Unregulated Habitat**

Based on daily flows, Index B = Mean of habitat events between 10% and 90% exceedance



**DECEMBER - Shallow Guilds, Eno River State Park Site**  
**% Inflow Approach - Habitat Effect as % of Unregulated Habitat**

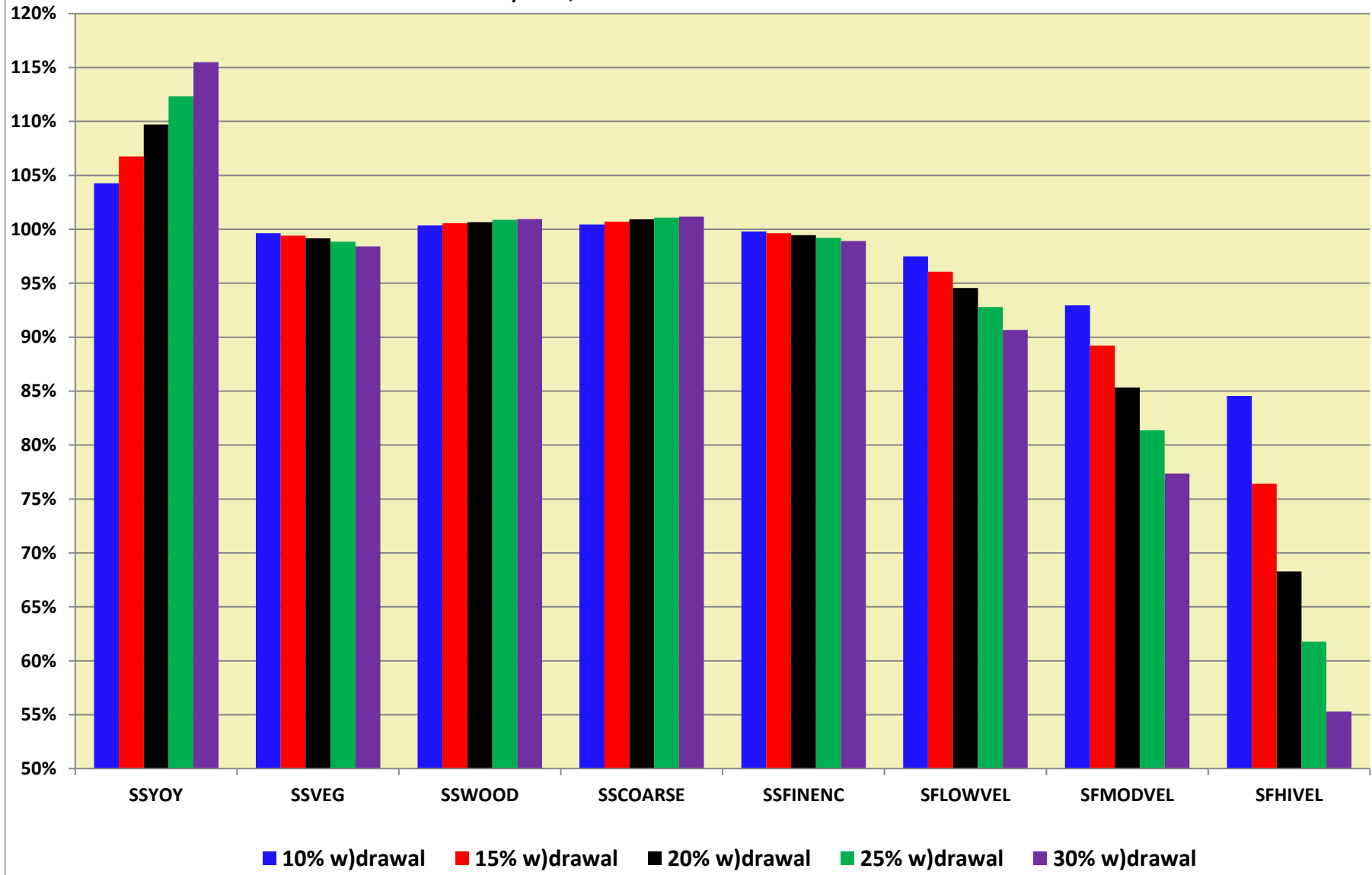
Based on daily flows, Index B = Mean of habitat events between 10% and 90% exceedance



# OCT & NOV - Shallow Guilds, Eno River State Park Site

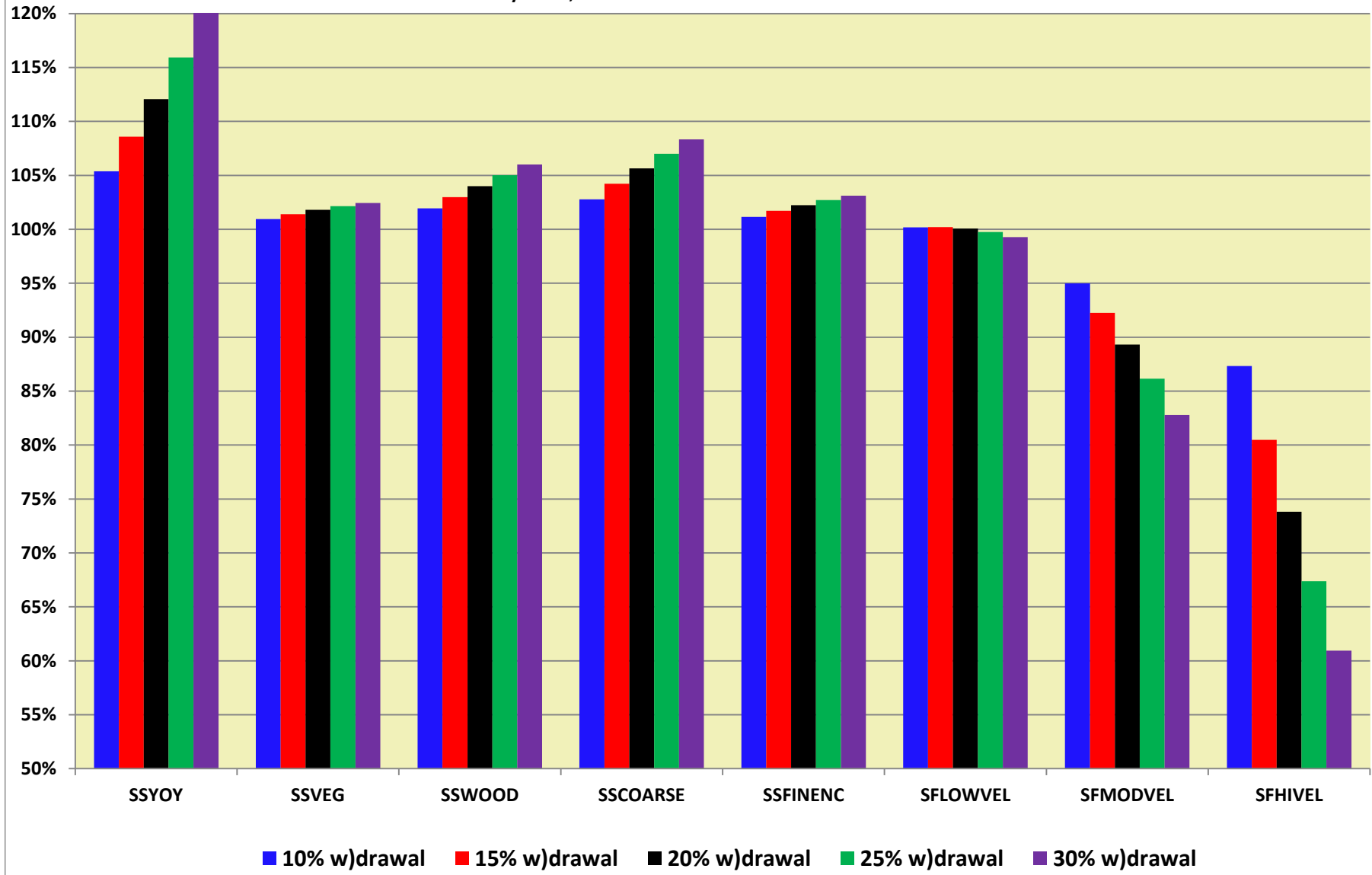
## % Inflow Approach - Habitat Effect as % of Unregulated Habitat

Based on daily flows, Index B = Mean of habitat events between 10% and 90% exceedance



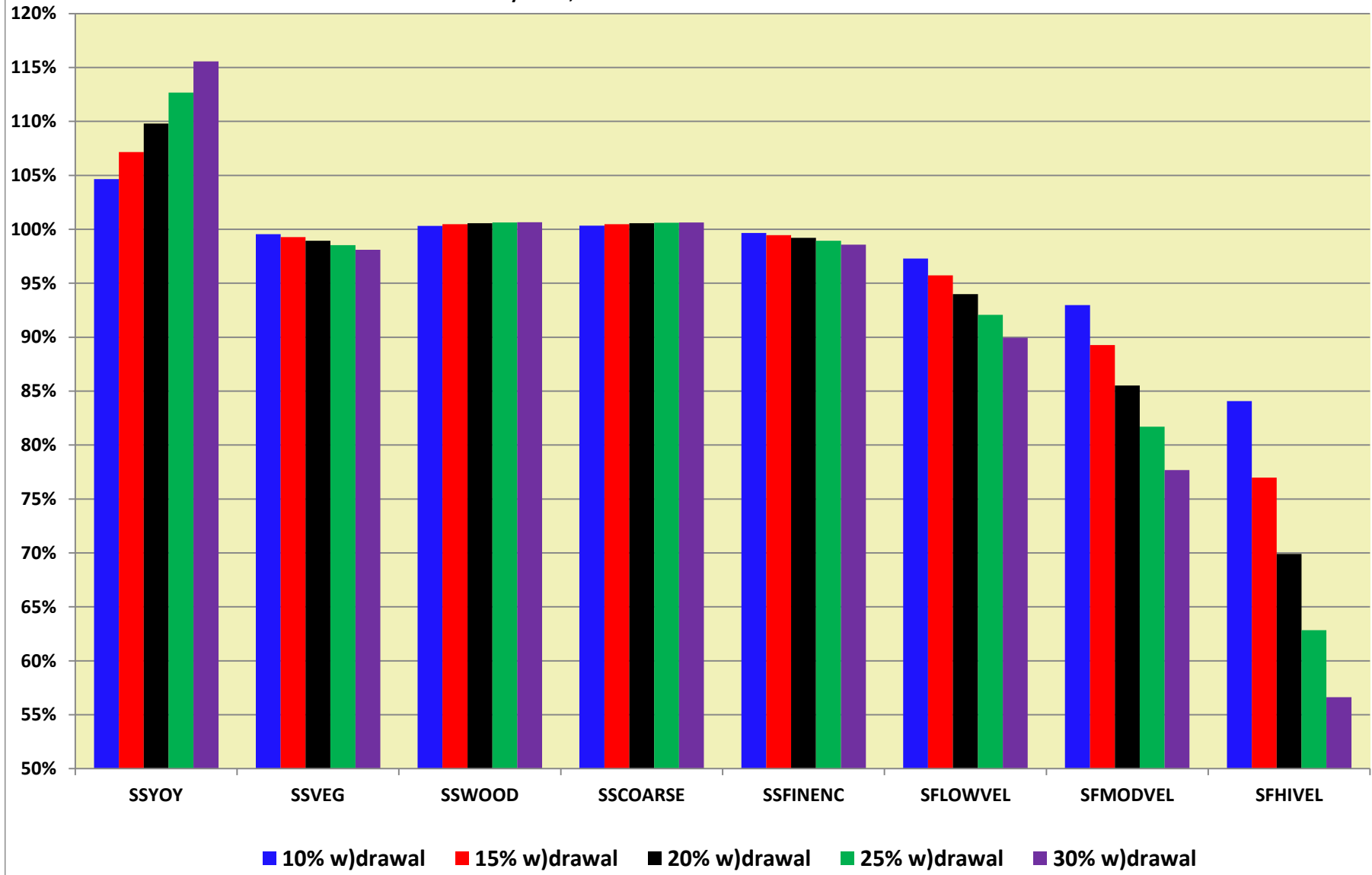
**APR thru JUN - Shallow Guilds, Eno River State Park Site**  
**% Inflow Approach - Habitat Effect as % of Unregulated Habitat**

Based on daily flows, Index B = Mean of habitat events between 10% and 90% exceedance



**JUL thru SEP - Shallow Guilds, Eno River State Park Site**  
**% Inflow Approach - Habitat Effect as % of Unregulated Habitat**

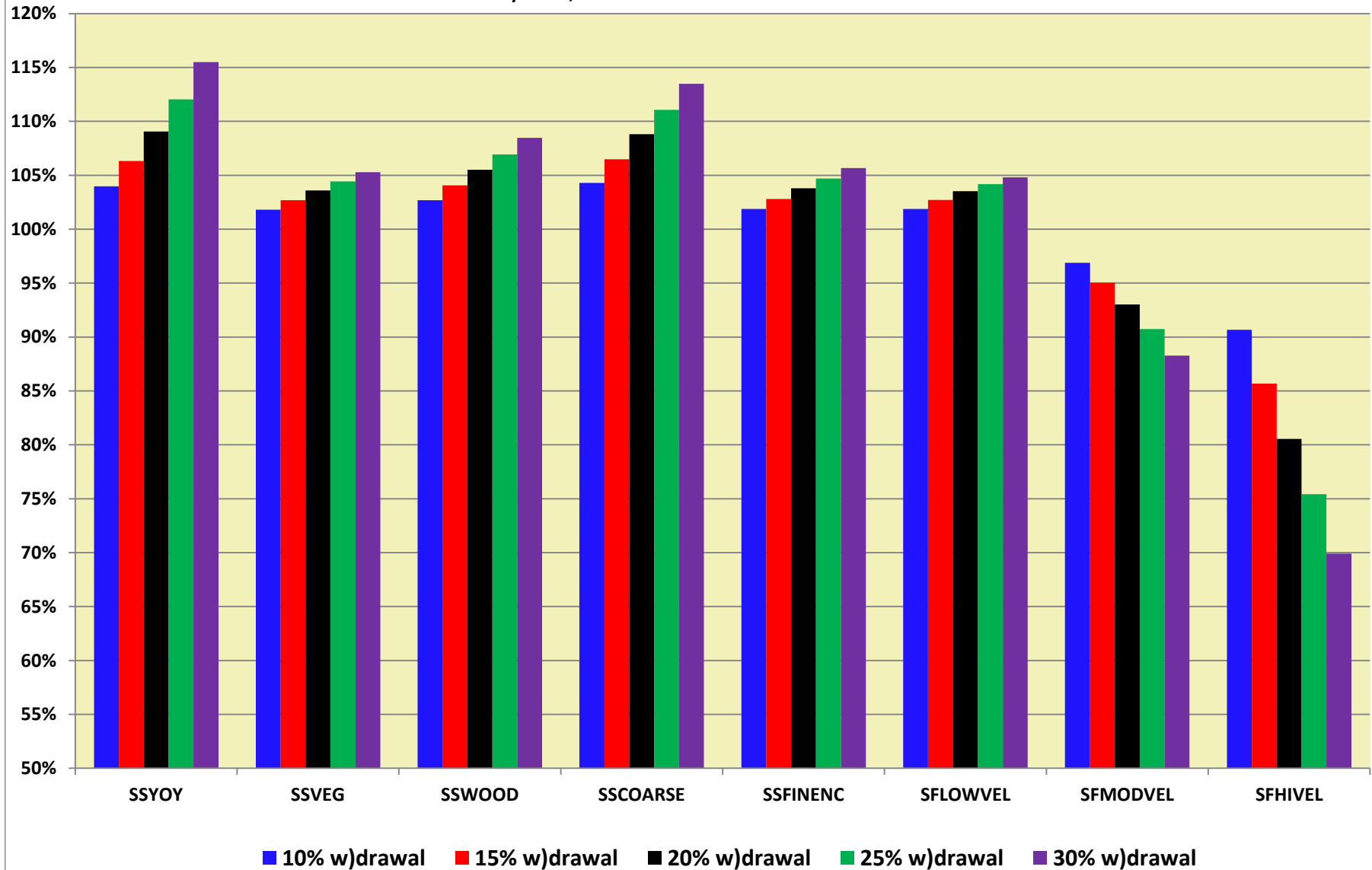
Based on daily flows, Index B = Mean of habitat events between 10% and 90% exceedance





**DEC thru MAR - Shallow Guilds, Eno River State Park Site**  
**% Inflow Approach - Habitat Effect as % of Unregulated Habitat**

Based on daily flows, Index B = Mean of habitat events between 10% and 90% exceedance



# ENO RIVER STATE PARK SITE TIME SERIES ANALYSIS FOR SHALLOW SLOW/FAST GUILDS      **BASED ON DAILY FLOWS**

INDEX A = MEAN OF HABITAT EVENTS BETWEEN 50% AND 90% EXCEEDANCE      10% INFLOW WITHDRAWN  
 INDEX B = MEAN OF HABITAT EVENTS BETWEEN 10% AND 90% EXCEEDANCE      90% AMBIENT FLOW LEFT IN STREAM  
 INDEX C = MEAN OF HABITAT EVENTS BETWEEN 50% AND 100% EXCEEDANCE      NO MAX WITHDRAWAL CAP  
 WINTER = DECEMBER THRU MARCH, SPRING = APRIL THRU JUNE      0  
 SUMMER = JULY THRU SEPTEMBER, FALL = OCTOBER AND NOVEMBER      0

ALT 1 COMPARED TO UNREGULATED, NUMBERS IN LEFT PAIRED COLUMN ARE VALUE OF METRIC FOR UNREGULATED SCENARIO																	
	SSYOY		SSVEG		SSWOOD		SSCOARSE		SSFINENC		SFLOWVEL		SFMODVEL		SFHIVEL		unused
	MEDIAN	% diff	MEDIAN	% diff	MEDIAN	% diff	MEDIAN	% diff	MEDIAN	% diff	MEDIAN	% diff	MEDIAN	% diff	MEDIAN	% diff	% diff
JAN	4350	101.5%	12408	101.6%	8093	102.6%	35273	102.5%	3997	102.0%	19429	101.9%	10141	96.1%	671	84.4%	0 #DIV/0!
FEB	4244	100.9%	11698	102.9%	7398	103.6%	31231	106.4%	3716	102.6%	18204	103.1%	11026	98.1%	953	89.9%	0 #DIV/0!
MAR	4205	101.5%	11470	103.3%	7222	104.0%	29469	109.9%	3658	102.6%	18172	104.7%	11213	98.4%	1008	91.0%	0 #DIV/0!
APR	4297	101.4%	12293	102.3%	7874	103.1%	34294	103.1%	3896	103.3%	19873	101.8%	10648	96.0%	774	85.1%	0 #DIV/0!
MAY	5101	102.9%	13215	100.8%	8867	101.6%	38340	102.3%	4370	101.0%	20621	99.9%	8482	92.9%	306	77.5%	0 #DIV/0!
JUN	6840	109.8%	13350	99.9%	9475	100.9%	42291	101.0%	4429	99.8%	19771	98.7%	6022	91.5%	108	81.5%	0 #DIV/0!
JUL	8767	107.2%	13023	99.7%	9630	100.2%	42893	100.3%	4318	99.6%	18112	97.1%	4518	91.6%	64	89.1%	0 #DIV/0!
AUG	9749	105.3%	12794	99.5%	9642	100.0%	42897	100.0%	4252	99.5%	16525	97.5%	3928	92.3%	54	90.7%	0 #DIV/0!
SEP	10878	105.3%	12672	99.4%	9654	100.1%	42936	100.1%	4210	99.2%	15647	95.2%	3168	92.8%	43	93.0%	0 #DIV/0!
OCT	10547	103.4%	12772	99.4%	9603	100.3%	42773	100.1%	4237	99.6%	16276	95.7%	3413	92.5%	46	93.5%	0 #DIV/0!
NOV	8065	105.9%	12997	99.7%	9493	100.5%	42279	100.6%	4307	99.7%	18297	98.5%	5064	92.4%	77	87.0%	0 #DIV/0!
DEC	5272	105.6%	12874	100.2%	8995	101.3%	39139	102.1%	4251	100.3%	19527	100.1%	7742	93.3%	226	79.6%	0 #DIV/0!
FAL	9330	105.9%	12904	99.5%	9560	100.3%	42564	100.3%	4278	99.6%	17276	97.1%	4177	92.1%	58	89.7%	0 #DIV/0!
SPG	5075	102.8%	13068	100.7%	8841	101.6%	38178	102.2%	4306	101.0%	20191	99.9%	8536	93.6%	318	79.2%	0 #DIV/0!
SUM	9865	104.9%	12858	99.5%	9643	100.1%	42910	100.1%	4263	99.7%	16852	97.1%	3859	92.4%	53	90.6%	0 #DIV/0!
WIN	4305	101.6%	12237	101.7%	7947	102.8%	34643	102.7%	3914	102.5%	18912	102.1%	10346	96.6%	744	84.7%	0 #DIV/0!

ALT 1 COMPARED TO UNREGULATED, NUMBERS IN LEFT PAIRED COLUMN ARE VALUE OF METRIC FOR UNREGULATED SCENARIO																	
	SSYOY		SSVEG		SSWOOD		SSCOARSE		SSFINENC		SFLOWVEL		SFMODVEL		SFHIVEL		unused
	Index A	% diff	Index A	% diff	Index A	% diff	Index A	% diff	Index A	% diff	Index A	% diff	Index A	% diff	Index A	% diff	% diff
JAN	4080	101.3%	10716	102.6%	6707	103.5%	24844	107.0%	3483	102.5%	15337	102.9%	7949	93.8%	305	80.7%	0 #DIV/0!
FEB	3916	102.1%	9845	104.0%	6038	104.7%	19572	111.3%	3252	103.0%	14157	105.7%	9280	96.0%	543	83.8%	0 #DIV/0!
MAR	3874	102.2%	9716	104.0%	5945	104.7%	18980	111.5%	3218	103.0%	13986	106.4%	9812	96.7%	655	84.7%	0 #DIV/0!
APR	4096	101.3%	10769	103.2%	6715	103.8%	24927	108.1%	3484	102.7%	16401	104.2%	8843	94.5%	420	81.4%	0 #DIV/0!
MAY	4459	103.1%	12316	101.7%	7992	102.8%	33933	103.7%	3985	102.2%	18660	100.1%	6438	92.3%	145	80.7%	0 #DIV/0!
JUN	5184	106.3%	12683	100.1%	8732	101.9%	38133	102.5%	4173	100.5%	17326	97.8%	4401	92.0%	65	89.2%	0 #DIV/0!
JUL	6128	106.5%	12268	99.6%	9005	101.1%	39615	101.2%	4080	99.9%	14444	96.4%	3049	92.3%	42	92.9%	0 #DIV/0!
AUG	6704	106.6%	11967	99.3%	9087	100.7%	39998	100.7%	4018	99.6%	12638	95.6%	2485	92.4%	34	94.1%	0 #DIV/0!
SEP	8023	105.9%	11712	99.0%	9169	100.1%	40352	100.0%	3967	99.4%	11091	94.6%	2001	92.3%	28	92.9%	0 #DIV/0!
OCT	7485	106.4%	11795	99.1%	9101	100.3%	39951	100.3%	3990	99.4%	11622	94.8%	2119	92.2%	29	93.1%	0 #DIV/0!
NOV	5671	105.8%	12046	99.6%	8751	101.1%	37931	100.8%	4014	99.9%	14178	96.9%	3222	92.3%	45	91.1%	0 #DIV/0!
DEC	4487	102.5%	11792	101.1%	7871	102.5%	32854	103.7%	3852	101.5%	15732	99.3%	5110	92.4%	95	84.2%	0 #DIV/0!
FAL	6463	106.4%	11910	99.4%	8951	100.6%	39071	100.8%	4001	99.7%	12841	95.8%	2575	92.4%	35	94.3%	0 #DIV/0!
SPG	4368	102.7%	11935	101.8%	7714	103.0%	32001	104.5%	3862	102.1%	17509	100.5%	6257	92.4%	141	80.9%	0 #DIV/0!
SUM	6873	106.5%	11982	99.3%	9089	100.6%	39993	100.6%	4020	99.6%	12747	95.6%	2491	92.4%	34	94.1%	0 #DIV/0!
WIN	4049	101.5%	10509	103.0%	6563	104.0%	23746	108.2%	3429	102.6%	14825	103.4%	8020	94.5%	339	81.4%	0 #DIV/0!

ALT 1 COMPARED TO UNREGULATED, NUMBERS IN LEFT PAIRED COLUMN ARE VALUE OF METRIC FOR UNREGULATED SCENARIO																	
	SSYOY		SSVEG		SSWOOD		SSCOARSE		SSFINENC		SFLOWVEL		SFMODVEL		SFHIVEL		unused
	Index B	% diff	Index B	% diff	Index B	% diff	Index B	% diff	Index B	% diff	Index B	% diff	Index B	% diff	Index B	% diff	% diff
JAN	4750	104.1%	11919	101.6%	7812	102.5%	31959	103.9%	3909	101.7%	18130	101.5%	9701	96.5%	722	90.6%	0 #DIV/0!
FEB	4298	103.0%	11298	102.5%	7198	103.4%	27961	105.7%	3696	102.5%	17262	103.1%	10578	97.8%	937	91.2%	0 #DIV/0!
MAR	4176	102.6%	11121	102.8%	7023	103.6%	26996	106.2%	3628	102.8%	17146	103.7%	10865	98.0%	1003	91.4%	0 #DIV/0!
APR	4489	103.3%	11911	102.0%	7674	102.9%	31288	104.6%	3883	102.2%	18707	102.2%	10241	96.6%	782	89.9%	0 #DIV/0!
MAY	5516	105.7%	12890	100.9%	8682	101.9%	37732	102.5%	4243	101.2%	19972	100.0%	8346	94.4%	416	85.3%	0 #DIV/0!
JUN	7129	105.9%	13091	100.1%	9242	101.1%	40844	101.4%	4346	100.2%	19126	98.6%	6418	93.4%	222	84.2%	0 #DIV/0!
JUL	8783	105.1%	12827	99.7%	9414	100.6%	41706	100.6%	4272	99.8%	17281	97.8%	5149	93.2%	153	84.3%	0 #DIV/0!
AUG	9697	104.7%	12634	99.5%	9451	100.3%	41857	100.3%	4224	99.7%	16102	97.3%	4555	93.2%	123	84.6%	0 #DIV/0!
SEP	10947	104.0%	12477	99.3%	9494	100.1%	42057	100.0%	4189	99.5%	14960	96.6%	3654	92.6%	69	85.5%	0 #DIV/0!
OCT	10550	104.3%	12550	99.4%	9455	100.2%	41830	100.2%	4211	99.5%	15506	96.9%	3953	92.4%	80	83.8%	0 #DIV/0!
NOV	8428	104.8%	12718	99.8%	9260	100.6%	40743	100.4%	4241	99.9%	17295	98.2%	5530	93.5%	182	86.3%	0 #DIV/0!
DEC	6378	104.9%	12564	100.6%	8702	101.5%	37611	102.2%	4147	100.8%	18297	99.7%	7633	95.0%	407	88.2%	0 #DIV/0!
FAL	9519	104.3%	12631	99.6%	9371	100.4%	41356	100.5%	4226	99.8%	16410	97.5%	4707	92.9%	123	84.6%	0 #DIV/0!
SPG	5591	105.4%	12676	100.9%	8554	101.9%	36825	102.8%	4169	101.2%	19309	100.2%	8404	95.0%	466	87.3%	0 #DIV/0!
SUM	9780	104.7%	12652	99.5%	9454	100.3%	41877	100.3%	4229	99.7%	16164	97.3%	4459	93.0%	113	84.1%	0 #DIV/0!
WIN	4740	104.0%	11764	101.8%	7701	102.7%	31239	104.3%	3856	101.9%	17744	101.9%	9791	96.9%	761	90.7%	0 #DIV/0!

ALT 1 COMPARED TO UNREGULATED, NUMBERS IN LEFT PAIRED COLUMN ARE VALUE OF METRIC FOR UNREGULATED SCENARIO																	
	SSYOY		SSVEG		SSWOOD		SSCOARSE		SSFINENC		SFLOWVEL		SFMODVEL		SFHIVEL		unused
	Index C	% diff	Index C	% diff	Index C	% diff	Index C	% diff	Index C	% diff	Index C	% diff	Index C	% diff	Index C	% diff	% diff
JAN	3771	101.4%	9913	102.5%	6107	103.3%	21512	106.7%	3246	102.3%	13735	102.8%	6983	93.7%	253	81.0%	0 #DIV/0!
FEB	3586	102.7%	9146	103.9%	5514	104.7%	17139	110.9%	3028	103.2%	12660	105.8%	8361	95.5%	449	84.0%	0 #DIV/0!
MAR	3528	102.9%	9013	103.9%	5413	104.8%	16598	111.0%	2986	103.3%	12461	106.4%	9132	96.2%	555	84.5%	0 #DIV/0!
APR	3796	101.5%	9978	103.0%	6130	103.7%	21637	107.8%	3255	102.5%	14644	104.2%	8147	94.1%	354	81.6%	0 #DIV/0!
MAY	4223	102.9%	11494	101.8%	7357	102.8%	29703	104.1%	3740	102.1%	16962	100.3%	5825	92.2%	125	81.6%	0 #DIV/0!
JUN	4843	105.8%	11907	100.6%	8039	102.3%	33621	103.3%	3926	100.8%	15808	98.0%	3955	92.1%	58	89.7%	0 #DIV/0!
JUL	5615	105.9%	11621	99.9%	8322	101.4%	35328	101.9%	3872	100.2%	13054	96.1%	2700	92.2%	37	91.9%	0 #DIV/0!
AUG	6070	106.1%	11335	99.6%	8372	101.1%	35529	101.5%	3816	100.0%	11386	95.5%	2198	92.3%	30	93.3%	0 #DIV/0!
SEP	7181	105.4%	11122	99.0%	8600	100.3%	36590	100.3%	3786	99.5%	9708	94.3%	1722	92.3%	24	91.7%	0 #DIV/0!

**ENO RIVER STATE PARK SITE TIME SERIES ANALYSIS FOR SHALLOW SLOW/FAST GUILDS      BASED ON DAILY FLOWS**

INDEX A = MEAN OF HABITAT EVENTS BETWEEN 50% AND 90% EXCEEDANCE      15% INFLOW WITHDRAWN  
 INDEX B = MEAN OF HABITAT EVENTS BETWEEN 10% AND 90% EXCEEDANCE      85% AMBIENT FLOW LEFT IN STREAM  
 INDEX C = MEAN OF HABITAT EVENTS BETWEEN 50% AND 100% EXCEEDANCE      NO MAX WITHDRAWAL CAP  
 WINTER = DECEMBER THRU MARCH, SPRING = APRIL THRU JUNE      0  
 SUMMER = JULY THRU SEPTEMBER, FALL = OCTOBER AND NOVEMBER      0

	ALT 2 COMPARED TO UNREGULATED, NUMBERS IN LEFT PAIRED COLUMN ARE VALUE OF METRIC FOR UNREGULATED SCENARIO																	
	SSYOY		SSVEG		SSWOOD		SSCOARSE		SSFINENC		SFLOWVEL		SFMODVEL		SFHIVEL		unused	
	MEDIAN	% diff	MEDIAN	% diff	MEDIAN	% diff	MEDIAN	% diff	MEDIAN	% diff	MEDIAN	% diff	MEDIAN	% diff	MEDIAN	% diff	MEDIAN	% diff
JAN	4350	102.2%	12408	102.2%	8093	103.9%	35273	103.7%	3997	103.1%	19429	102.4%	10141	93.7%	671	76.5%	0	#DIV/0!
FEB	4244	101.1%	11698	104.2%	7398	105.5%	31231	108.7%	3716	104.1%	18204	104.5%	11026	96.1%	953	84.1%	0	#DIV/0!
MAR	4205	101.8%	11470	104.9%	7222	106.1%	29469	112.6%	3658	104.2%	18172	106.8%	11213	96.9%	1008	85.3%	0	#DIV/0!
APR	4297	102.3%	12293	103.4%	7874	104.7%	34294	104.7%	3896	105.2%	19873	102.3%	10648	93.7%	774	77.0%	0	#DIV/0!
MAY	5101	104.5%	13215	100.9%	8867	102.5%	38340	103.5%	4370	101.4%	20621	99.8%	8482	89.6%	306	66.3%	0	#DIV/0!
JUN	6840	114.4%	13350	99.8%	9475	101.5%	42291	101.4%	4429	99.6%	19771	97.9%	6022	87.3%	108	75.0%	0	#DIV/0!
JUL	8767	110.7%	13023	99.5%	9630	100.4%	42893	100.5%	4318	99.4%	18112	95.5%	4518	87.5%	64	84.4%	0	#DIV/0!
AUG	9749	107.4%	12794	99.2%	9642	100.1%	42897	100.0%	4252	99.2%	16525	96.5%	3928	88.3%	54	87.0%	0	#DIV/0!
SEP	10878	107.5%	12672	99.2%	9654	100.1%	42936	100.2%	4210	98.8%	15647	93.4%	3168	88.8%	43	90.7%	0	#DIV/0!
OCT	10547	106.8%	12772	99.2%	9603	100.3%	42773	100.3%	4237	99.4%	16276	93.5%	3413	88.8%	46	89.1%	0	#DIV/0!
NOV	8065	109.6%	12997	99.7%	9493	100.9%	42279	100.9%	4307	99.5%	18297	97.4%	5064	88.4%	77	81.8%	0	#DIV/0!
DEC	5272	109.9%	12874	100.5%	8995	102.1%	39139	103.4%	4251	100.4%	19527	100.0%	7742	90.3%	226	70.4%	0	#DIV/0!
FAL	9330	108.9%	12904	99.3%	9560	100.5%	42564	100.5%	4278	99.4%	17276	95.8%	4177	88.2%	58	86.2%	0	#DIV/0!
SPG	5075	104.3%	13068	101.0%	8841	102.4%	38178	103.4%	4306	101.4%	20191	99.6%	8536	90.4%	318	68.2%	0	#DIV/0!
SUM	9865	106.9%	12858	99.1%	9643	100.2%	42910	100.2%	4263	99.4%	16852	95.6%	3859	88.4%	53	86.8%	0	#DIV/0!
WIN	4305	102.5%	12237	102.5%	7947	104.3%	34643	104.1%	3914	103.8%	18912	103.0%	10346	94.5%	744	76.7%	0	#DIV/0!

	ALT 2 COMPARED TO UNREGULATED, NUMBERS IN LEFT PAIRED COLUMN ARE VALUE OF METRIC FOR UNREGULATED SCENARIO																	
	SSYOY		SSVEG		SSWOOD		SSCOARSE		SSFINENC		SFLOWVEL		SFMODVEL		SFHIVEL		unused	
	Index A	% diff	Index A	% diff	Index A	% diff	Index A	% diff	Index A	% diff	Index A	% diff	Index A	% diff	Index A	% diff	Index A	% diff
JAN	4080	102.0%	10716	103.9%	6707	105.3%	24844	110.5%	3483	103.7%	15337	104.2%	7949	90.4%	305	71.8%	0	#DIV/0!
FEB	3916	103.1%	9845	106.0%	6038	107.2%	19572	117.4%	3252	104.6%	14157	108.5%	9280	93.5%	543	75.5%	0	#DIV/0!
MAR	3874	103.3%	9716	105.9%	5945	107.1%	18980	117.4%	3218	104.6%	13986	109.4%	9812	94.4%	655	76.9%	0	#DIV/0!
APR	4096	102.1%	10769	105.0%	6715	106.1%	24927	112.7%	3484	104.4%	16401	106.6%	8843	91.6%	420	72.1%	0	#DIV/0!
MAY	4459	104.9%	12316	102.4%	7992	104.2%	33933	105.6%	3985	103.2%	18660	99.8%	6438	88.2%	145	72.4%	0	#DIV/0!
JUN	5184	110.3%	12683	100.1%	8732	102.9%	38133	103.7%	4173	100.6%	17326	96.5%	4401	88.0%	65	83.1%	0	#DIV/0!
JUL	6128	110.5%	12268	99.3%	9005	101.6%	39615	101.7%	4080	99.7%	14444	94.2%	3049	88.4%	42	88.1%	0	#DIV/0!
AUG	6704	110.3%	11967	98.8%	9087	100.9%	39998	100.9%	4018	99.3%	12638	93.1%	2485	88.4%	34	88.2%	0	#DIV/0!
SEP	8023	109.3%	11712	98.4%	9169	100.1%	40352	100.1%	3967	99.2%	11091	91.8%	2001	88.3%	28	89.3%	0	#DIV/0!
OCT	7485	109.9%	11795	98.5%	9101	100.5%	39951	100.6%	3990	99.1%	11622	91.9%	2119	88.2%	29	89.7%	0	#DIV/0!
NOV	5671	109.5%	12046	99.5%	8751	101.7%	37931	102.2%	4014	99.8%	14178	95.2%	3222	88.4%	45	86.7%	0	#DIV/0!
DEC	4487	104.3%	11792	101.6%	7871	103.9%	32854	105.8%	3852	102.0%	15732	99.1%	5110	88.4%	95	76.8%	0	#DIV/0!
FAL	6463	110.3%	11910	99.0%	8951	101.0%	39071	101.3%	4001	99.5%	12841	93.5%	2575	88.7%	35	91.4%	0	#DIV/0!
SPG	4368	104.3%	11935	102.7%	7714	104.6%	32001	106.9%	3862	103.2%	17509	100.6%	6257	88.4%	141	72.3%	0	#DIV/0!
SUM	6873	110.3%	11982	98.9%	9089	100.9%	39993	100.9%	4020	99.4%	12747	93.1%	2491	88.4%	34	88.2%	0	#DIV/0!
WIN	4049	102.3%	10509	104.5%	6563	106.0%	23746	112.3%	3429	104.0%	14825	105.0%	8020	91.4%	339	72.6%	0	#DIV/0!

	ALT 2 COMPARED TO UNREGULATED, NUMBERS IN LEFT PAIRED COLUMN ARE VALUE OF METRIC FOR UNREGULATED SCENARIO																	
	SSYOY		SSVEG		SSWOOD		SSCOARSE		SSFINCEN		SFLOWVEL		SFMODVEL		SFHIVEL		unused	
	Index B	% diff	Index B	% diff	Index B	% diff	Index B	% diff	Index B	% diff	Index B	% diff	Index B	% diff	Index B	% diff	Index B	% diff
JAN	4750	106.6%	11919	102.4%	7812	103.7%	31959	105.9%	3909	102.6%	18130	102.1%	9701	94.5%	722	85.9%	0	#DIV/0!
FEB	4298	104.9%	11298	103.8%	7198	105.1%	27961	108.7%	3696	103.7%	17262	104.6%	10578	96.4%	937	86.7%	0	#DIV/0!
MAR	4176	104.0%	11121	104.2%	7023	105.4%	26996	109.3%	3628	104.2%	17146	105.5%	10865	96.6%	1003	86.9%	0	#DIV/0!
APR	4489	105.5%	11911	103.2%	7674	104.5%	31288	107.2%	3883	103.4%	18707	103.3%	10241	94.7%	782	84.0%	0	#DIV/0!
MAY	5516	109.1%	12890	101.3%	8682	102.9%	37732	103.8%	4243	101.7%	19972	99.9%	8346	91.4%	416	78.1%	0	#DIV/0!
JUN	7129	109.4%	13091	100.0%	9242	101.7%	40844	102.1%	4346	100.2%	19126	97.7%	6418	89.9%	222	76.1%	0	#DIV/0!
JUL	8783	107.9%	12827	99.5%	9414	100.8%	41706	100.9%	4272	99.7%	17281	96.5%	5149	89.6%	153	76.5%	0	#DIV/0!
AUG	9697	107.3%	12634	99.3%	9451	100.5%	41857	100.5%	4224	99.5%	16102	95.8%	4555	89.5%	123	76.4%	0	#DIV/0!
SEP	10947	106.3%	12477	98.9%	9494	100.1%	42057	100.1%	4189	99.2%	14960	94.8%	3654	88.7%	69	78.3%	0	#DIV/0!
OCT	10550	106.3%	12550	99.1%	9455	100.3%	41830	100.3%	4211	99.4%	15506	95.0%	3953	88.5%	80	76.3%	0	#DIV/0!
NOV	8428	108.1%	12718	99.7%	9260	101.0%	40743	101.2%	4241	99.9%	17295	97.1%	5530	90.1%	182	78.6%	0	#DIV/0!
DEC	6378	107.8%	12564	100.9%	8702	102.3%	37611	103.3%	4147	101.2%	18297	99.6%	7633	92.2%	407	81.6%	0	#DIV/0!
FAL	9519	106.8%	12631	99.4%	9371	100.6%	41356	100.7%	4226	99.6%	16410	96.1%	4707	89.2%	123	76.4%	0	#DIV/0!
SPG	5591	108.6%	12676	101.4%	8554	103.0%	36825	104.2%	4169	101.7%	19309	100.2%	8404	92.2%	466	80.5%	0	#DIV/0!
SUM	9780	107.2%	12652	99.3%	9454	100.5%	41877	100.5%	4229	99.5%	16164	95.7%	4459	89.3%	113	77.0%	0	#DIV/0!
WIN	4740	106.3%	11764	102.7%	7701	104.1%	31239	106.5%	3856	102.8%	17744	102.7%	9791	95.0%	761	85.7%	0	#DIV/0!

	ALT 2 COMPARED TO UNREGULATED, NUMBERS IN LEFT PAIRED COLUMN ARE VALUE OF METRIC FOR UNREGULATED SCENARIO																	
	SSYOY		SSVEG		SSWOOD		SSCOARSE		SSFINCEN		SFLOWVEL		SFMODVEL		SFHIVEL		unused	
	Index C	% diff	Index C	% diff	Index C	% diff	Index C	% diff	Index C	% diff	Index C	% diff	Index C	% diff	Index C	% diff	Index C	% diff
JAN	3771	102.1%	9913	103.6%	6107	105.0%	21512	110.0%	3246	103.4%	13735	104.0%	6983	90.2%	253	72.3%	0	#DIV/0!
FEB	3586	103.9%	9146	105.8%	5514	107.1%	17139	116.6%	3028	104.8%	12660	108.5%	8361	92.8%	449	75.7%	0	#DIV/0!
MAR	3528	104.1%	9013	105.7%	5413	107.1%	16598	116.6%	2986	104.8%	12461	109.3%	9132	93.8%	555	76.6%	0	#DIV/0!
APR	3796	102.8%	9978	105.0%	6130	106.2%	21637	112.5%	3255	104.4%	14644	106.8%	8147	91.0%	354	72.3%	0	#DIV/0!
MAY	4223	104.6%	11494	102.7%	7357	104.4%	29703	106.3%	3740	103.2%	16962	100.2%	5825	88.2%	125	73.6%	0	#DIV/0!
JUN	4843	109.6%	11907	101.0%	8039	103.6%	33621	105.1%	3926	101.3%	15808	96.8%	3955	88.0%	58	84.5%	0	#DIV/0!
JUL	5615	109.6%	11621	99.8%	8322	102.2%	35328	102.9%	3872	100.3%	13054	94.0%	2700	88.3%	37	89.2%	0	#DIV/0!
AUG	6070	109.6%	11335	99.4%	8372	101.6%	35529	102.2%	3816	99.9%	11386	93.0%	2198	88.3%	30	90.0%	0	#DIV/0!
SEP	7181	108.7%	11122	98.6%	8600	100.6%	36590	100.6%	3786	99.4%	9708	91.4%	1722	88.2%	24	87.5%	0	#DIV/0!
OCT	6775	109.1%	11221	98.7%	8594	100.9%	36553	101.0%	3820	99.3%	10098	91.7%	1814	88.1%	25	88.0%	0	#DIV/0!
NOV	5243	108.4%	11326	99.6%	8065	101.9%	33470	102.8%	3796	99.9%	12452	94.5%	2756	88.4%	39	87.2%	0	#DIV/0!
DEC	4195	104.2%	10953	101.8%	7174	104.1%	28419	106.1%	3599	102.2%	14069	98.9%	4425	88.4%	81	77.8%	0	#DIV/0!
FAL	5913	102.2%	11265	99.2%	8334	101.4%	35039	101.8%	3806	99.6%	11178	93.1%	2199	88.6%	30	90.0%	0	#DIV/0!
SPG	4107	104.5%	11076	103.0%	7054	104.9%	27730	107.5%	3610	103.4%	15795	101.0%	5582	88.5%	120	74.2%	0	#DIV/0!
SUM	6224	109.5%	11352	99.3%	8429	101.5%	35804	101.9%	3823	99.9%	11337	92.8%	2175	88.3%	30	90.0%	0	#DIV/0!
WIN	3723	102.9%	9717	104.4%	5966	106.0%	20564	112.0%	3189	104.1%	13223	105.0%	6982	91.2%	279	72.8%	0	#DIV/0!

**ENO RIVER STATE PARK SITE TIME SERIES ANALYSIS FOR SHALLOW SLOW/FAST GUILDS      BASED ON DAILY FLOWS**

INDEX A = MEAN OF HABITAT EVENTS BETWEEN 50% AND 90% EXCEEDANCE      20% INFLOW WITHDRAWN

INDEX B = MEAN OF HABITAT EVENTS BETWEEN 10% AND 90% EXCEEDANCE

80% AMBIENT FLOW LEFT IN STREAM

INDEX C = MEAN OF HABITAT EVENTS BETWEEN 50% AND 100% EXCEEDANCE

NO MAX WITHDRAWAL CAP

WINTER = DECEMBER THRU MARCH, SPRING = APRIL THRU JUNE

0

SUMMER = JULY THRU SEPTEMBER, FALL = OCTOBER AND NOVEMBER

0

	ALT 3 COMPARED TO UNREGULATED, NUMBERS IN LEFT PAIRED COLUMN ARE VALUE OF METRIC FOR UNREGULATED SCENARIO																	
	SSYOY		SSVEG		SSWOOD		SSCOARSE		SSFINCEN		SFLOWVEL		SFMODVEL		SFHIVEL		unused	
	MEDIAN	% diff	MEDIAN	% diff	MEDIAN	% diff	MEDIAN	% diff	MEDIAN	% diff	MEDIAN	% diff	MEDIAN	% diff	MEDIAN	% diff	MEDIAN	% diff
JAN	4350	106.5%	12408	102.8%	8093	105.4%	35273	105.0%	3997	104.1%	19429	102.8%	10141	91.3%	671	68.0%	0	#DIV/0!
FEB	4244	101.4%	11698	105.5%	7398	107.2%	31231	110.8%	3716	105.5%	18204	105.9%	11026	94.1%	953	78.8%	0	#DIV/0!
MAR	4205	102.1%	11470	106.4%	7222	108.0%	29469	115.1%	3658	105.7%	18172	108.2%	11213	95.0%	1008	79.8%	0	#DIV/0!
APR	4297	103.2%	12293	104.5%	7874	106.3%	34294	106.2%	3896	107.0%	19873	102.9%	10648	91.4%	774	68.9%	0	#DIV/0!
MAY	5101	109.5%	13215	101.1%	8867	103.5%	38340	105.4%	4370	101.6%	20621	99.2%	8482	85.9%	306	58.5%	0	#DIV/0!
JUN	6840	118.9%	13350	99.7%	9475	101.8%	42291	101.8%	4429	99.5%	19771	96.6%	6022	83.2%	108	69.4%	0	#DIV/0!
JUL	8767	114.1%	13023	99.1%	9630	100.6%	42893	100.6%	4318	99.1%	18112	93.7%	4518	83.6%	64	79.7%	0	#DIV/0!
AUG	9749	109.4%	12794	99.0%	9642	100.1%	42897	99.9%	4252	98.9%	16525	94.2%	3928	84.6%	54	83.3%	0	#DIV/0!
SEP	10878	109.6%	12672	98.5%	9654	100.2%	42936	100.1%	4210	98.6%	15647	90.8%	3168	84.9%	43	86.0%	0	#DIV/0!
OCT	10547	109.4%	12772	98.9%	9603	100.5%	42773	100.2%	4237	99.1%	16276	92.0%	3413	84.7%	46	87.0%	0	#DIV/0!
NOV	8065	114.1%	12997	99.4%	9493	101.1%	42279	101.0%	4307	99.5%	18297	96.5%	5064	84.0%	77	76.6%	0	#DIV/0!
DEC	5272	114.2%	12874	100.8%	8995	103.0%	39139	105.0%	4251	100.6%	19527	99.9%	7742	86.3%	226	60.6%	0	#DIV/0!
FAL	9330	111.6%	12904	99.0%	9560	100.6%	42564	100.6%	4278	99.2%	17276	94.3%	4177	84.2%	58	82.8%	0	#DIV/0!
SPG	5075	108.1%	13068	101.2%	8841	103.3%	38178	105.0%	4306	101.6%	20191	99.4%	8536	86.7%	318	59.1%	0	#DIV/0!
SUM	9865	108.9%	12858	98.8%	9643	100.3%	42910	100.2%	4263	99.1%	16852	93.6%	3859	84.7%	53	83.0%	0	#DIV/0!
WIN	4305	103.3%	12237	103.3%	7947	105.7%	34643	105.5%	3914	104.9%	18912	103.8%	10346	92.0%	744	68.8%	0	#DIV/0!

	ALT 3 COMPARED TO UNREGULATED, NUMBERS IN LEFT PAIRED COLUMN ARE VALUE OF METRIC FOR UNREGULATED SCENARIO																	
	SSYOY		SSVEG		SSWOOD		SSCOARSE		SSFINCEN		SFLOWVEL		SFMODVEL		SFHIVEL		unused	
	Index A	% diff	Index A	% diff	Index A	% diff	Index A	% diff	Index A	% diff	Index A	% diff	Index A	% diff	Index A	% diff	Index A	% diff
JAN	4080	103.0%	10716	105.5%	6707	107.6%	24844	114.8%	3483	105.2%	15337	105.9%	7949	87.0%	305	63.0%	0	#DIV/0!
FEB	3916	104.0%	9845	108.1%	6038	109.8%	19572	123.7%	3252	106.2%	14157	111.2%	9280	90.7%	543	67.2%	0	#DIV/0!
MAR	3874	104.1%	9716	107.8%	5945	109.4%	18980	123.2%	3218	106.0%	13986	112.3%	9812	91.8%	655	69.2%	0	#DIV/0!
APR	4096	102.8%	10769	106.9%	6715	108.5%	24927	117.2%	3484	106.1%	16401	108.6%	8843	88.2%	420	62.9%	0	#DIV/0!
MAY	4459	107.0%	12316	103.1%	7992	105.7%	33933	107.5%	3985	104.1%	18660	99.4%	6438	84.1%	145	64.8%	0	#DIV/0!
JUN	5184	114.8%	12683	100.0%	8732	103.8%	38133	104.9%	4173	100.6%	17326	94.9%	4401	83.9%	65	78.5%	0	#DIV/0!
JUL	6128	114.6%	12268	98.9%	9005	102.0%	39615	102.2%	4080	99.5%	14444	92.0%	3049	84.4%	42	83.3%	0	#DIV/0!
AUG	6704	114.0%	11967	98.3%	9087	101.1%	39998	101.1%	4018	99.0%	12638	90.5%	2485	84.5%	34	85.3%	0	#DIV/0!
SEP	8023	112.9%	11712	97.8%	9169	100.1%	40352	100.0%	3967	98.9%	11091	88.8%	2001	84.1%	28	85.7%	0	#DIV/0!
OCT	7485	113.8%	11795	98.0%	9101	100.6%	39951	100.7%	3990	98.8%	11622	89.1%	2119	84.1%	29	86.2%	0	#DIV/0!
NOV	5671	113.8%	12046	99.3%	8751	102.3%	37931	103.0%	4014	99.8%	14178	93.2%	3222	84.3%	45	82.2%	0	#DIV/0!
DEC	4487	106.5%	11792	102.1%	7871	105.4%	32854	108.0%	3852	102.7%	15732	98.7%	5110	84.2%	95	70.5%	0	#DIV/0!
FAL	6463	114.7%	11910	98.6%	8951	101.2%	39071	101.7%	4001	99.3%	12841	91.2%	2575	84.6%	35	85.7%	0	#DIV/0!
SPG	4368	106.0%	11935	103.5%	7714	106.2%	32001	109.3%	3862	104.2%	17509	100.4%	6257	84.3%	141	65.2%	0	#DIV/0!
SUM	6873	114.1%	11982	98.4%	9089	101.0%	39993	101.1%	4020	99.1%	12747	90.4%	2491	84.4%	34	85.3%	0	#DIV/0!
WIN	4049	103.1%	10509	106.0%	6563	108.2%	23746	116.8%	3429	105.5%	14825	106.6%	8020	88.1%	339	63.7%	0	#DIV/0!

	ALT 3 COMPARED TO UNREGULATED, NUMBERS IN LEFT PAIRED COLUMN ARE VALUE OF METRIC FOR UNREGULATED SCENARIO																	
	SSYOY		SSVEG		SSWOOD		SSCOARSE		SSFINCEN		SFLOWVEL		SFMODVEL		SFHIVEL		unused	
	Index B	% diff	Index B	% diff	Index B	% diff	Index B	% diff	Index B	% diff	Index B	% diff	Index B	% diff	Index B	% diff	Index B	% diff
JAN	4750	109.5%	11919	103.3%	7812	105.2%	31959	108.2%	3909	103.5%	18130	102.8%	9701	92.4%	722	80.3%	0	#DIV/0!
FEB	4298	107.0%	11298	105.1%	7198	106.9%	27961	111.8%	3696	105.0%	17262	106.0%	10578	94.7%	937	81.9%	0	#DIV/0!
MAR	4176	105.6%	11121	105.5%	7023	107.2%	26996	112.3%	3628	105.6%	17146	107.0%	10865	95.0%	1003	82.5%	0	#DIV/0!
APR	4489	108.1%	11911	104.3%	7674	106.1%	31288	109.8%	3883	104.6%	18707	104.3%	10241	92.6%	782	78.1%	0	#DIV/0!
MAY	5516	112.9%	12890	101.6%	8682	103.9%	37732	105.1%	4243	102.2%	19972	99.6%	8346	88.1%	416	70.7%	0	#DIV/0!
JUN	7129	113.0%	13091	100.0%	9242	102.3%	40844	102.7%	4346	100.2%	19126	96.7%	6418	86.2%	222	68.5%	0	#DIV/0!
JUL	8783	110.9%	12827	99.3%	9414	101.1%	41706	101.1%	4272	99.5%	17281	95.1%	5149	86.0%	153	69.3%	0	#DIV/0!
AUG	9697	110.0%	12634	98.9%	9451	100.5%	41857	100.5%	4224	99.2%	16102	94.1%	4555	85.8%	123	69.9%	0	#DIV/0!
SEP	10947	108.5%	12477	98.5%	9494	100.1%	42057	100.0%	4189	98.9%	14960	92.7%	3654	84.7%	69	72.5%	0	#DIV/0!
OCT	10550	108.7%	12550	98.7%	9455	100.3%	41830	100.4%	4211	99.1%	15506	93.1%	3953	84.4%	80	70.0%	0	#DIV/0!
NOV	8428	110.7%	12718	99.6%	9260	103.1%	40743	101.6%	4241	99.8%	17295	95.8%	5530	86.4%	182	70.9%	0	#DIV/0!
DEC	6378	111.1%	12564	101.2%	8702	103.1%	37611	104.4%	4147	101.6%	18297	99.3%	7633	89.3%	407	74.9%	0	#DIV/0!
FAL	9519	109.7%	12631	99.2%	9371	100.7%	41356	100.9%	4226	99.5%	16410	94.6%	4707	85.3%	123	68.3%	0	#DIV/0!
SPG	5591	112.1%	12676	101.8%	8554	104.0%	36825	105.6%	4169	102.2%	19309	100.1%	8404	89.3%	466	73.8%	0	#DIV/0!
SUM	9780	109.8%	12652	98.9%	9454	100.6%	41877	100.6%	4229	99.2%	16164	94.0%	4459	85.5%	113	69.9%	0	#DIV/0!
WIN	4740	109.1%	11764	103.6%	7701	105.5%	31239	108.8%	3856	103.8%	17744	103.5%	9791	93.0%	761	80.6%	0	#DIV/0!

	ALT 3 COMPARED TO UNREGULATED, NUMBERS IN LEFT PAIRED COLUMN ARE VALUE OF METRIC FOR UNREGULATED SCENARIO																	
	SSYOY		SSVEG		SSWOOD		SSCOARSE		SSFINCEN		SFLOWVEL		SFMODVEL		SFHIVEL		unused	
	Index C	% diff	Index C	% diff	Index C	% diff	Index C	% diff	Index C	% diff	Index C	% diff	Index C	% diff	Index C	% diff	Index C	% diff
JAN	3771	103.6%	9913	105.3%	6107	107.4%	21512	114.4%	3246	105.1%	13735	105.8%	6983	86.8%	253	63.6%	0	#DIV/0!
FEB	3586	105.1%	9146	107.9%	5514	109.7%	17139	122.7%	3028	106.5%	12660	111.3%	8361	90.0%	449	67.5%	0	#DIV/0!
MAR	3528	105.0%	9013	107.4%	5413	109.2%	16598	122.0%	2986	106.2%	12461	112.1%	9132	91.0%	555	69.0%	0	#DIV/0!
APR	3796	104.0%	9978	106.9%	6130	108.7%	21637	117.1%	3255	106.3%	14644	109.1%	8147	87.6%	354	63.6%	0	#DIV/0!
MAY	4223	106.6%	11494	103.5%	7357	106.0%	29703	108.5%	3740	104.3%	16962	99.9%	5825	84.1%	125	66.4%	0	#DIV/0!
JUN	4843	113.5%	11907	101.1%	8039	104.7%	33621	106.6%	3926	101.5%	15808	95.2%	3955	83.9%	58	79.3%	0	#DIV/0!
JUL	5615	113.3%	11621	99.5%	8322	102.8%	35328	103.8%	3872	100.3%	13054	91.5%	2700	84.3%	37	83.8%	0	#DIV/0!
AUG	6070	112.9%	11335	99.0%	8372	102.0%	35529	102.7%	3816	99.8%	11386	90.2%	2198	84.4%	30	86.7%	0	#DIV/0!
SEP	7181	112.1%	11122	98.1%	8600	100.8%	36590	100.7%	3786	99.2%	9708	88.4%	1722	84.1%	24	83.3%	0	#DIV/0!
OCT	6775	112.8%	11221	98.3%	8594	101.2%	36553	101.4%	3820	99.1%	10098	88.7%	1814	84.0%	25	84.0%	0	#DIV/0!
NOV	5243	112.4%	11326	99.6%	8065	102.9%	33470	104.0%	3796	100.1%	12452	92.7%	2756	84.3%	39	82.1%	0	#DIV/0!
DEC	4195	106.6%	10953	102.6%	7174	105.8%	28419	108.7%	3599	103.1%	14069	98.5%	4425	84.2%	81	71.6%	0	#DIV/0!
FAL	5913	113.2%	11265	98.9%	8334	102.0%	35039	102.6%	3806	99.6%	11178	90.7%	2199	84.5%	30	86.7%	0	#DIV/0!
SPG	4107	106.3%	11076	104.0%	7054	106.7%	27730	110.2%	3610	104.5%	15795	100.9%	5582	84.3%	120	66.7%	0	#DIV/0!
SUM	6224	112.9%	11352	98.9%	8429	101.9%	35804	102.4%	3823	99.7%	11337	90.7%	2175	84.3%	30	86.7%	0	#DIV/0!
WIN	3723	104.0%	9717	106.0%	5966	108.2%	20564	116.4%	3189	105.6%	13223	106.7%	6982	87.8%	279	64.5%	0	#DIV/0!



# ENO RIVER STATE PARK SITE TIME SERIES ANALYSIS FOR SHALLOW SLOW/FAST GUILDS

INDEX A = MEAN OF HABITAT EVENTS BETWEEN 50% AND 90% EXCEEDANCE  
INDEX B = MEAN OF HABITAT EVENTS BETWEEN 10% AND 90% EXCEEDANCE  
INDEX C = MEAN OF HABITAT EVENTS BETWEEN 50% AND 100% EXCEEDANCE  
WINTER = DECEMBER THRU MARCH, SPRING = APRIL THRU JUNE  
SUMMER = JULY THRU SEPTEMBER, FALL = OCTOBER AND NOVEMBER

# BASED ON DAILY FLOWS

25% INFLOW WITHDRAWN  
75% AMBIENT FLOW LEFT IN STREAM  
NO MAX WITHDRAWAL CAP  
0  
0

	ALT 4 COMPARED TO UNREGULATED, NUMBERS IN LEFT PAIRED COLUMN ARE VALUE OF METRIC FOR UNREGULATED SCENARIO																	
	SSYOY		SSVEG		SSWOOD		SSCOARSE		SSFINENC		SFLOWVEL		SFMODVEL		SFHIVEL		unused	
	MEDIAN	% diff	MEDIAN	% diff	MEDIAN	% diff	MEDIAN	% diff	MEDIAN	% diff	MEDIAN	% diff	MEDIAN	% diff	MEDIAN	% diff	MEDIAN	% diff
JAN	4350	110.6%	12408	103.5%	8093	107.0%	35273	106.3%	3997	105.2%	19429	102.9%	10141	88.1%	671	59.6%	0	#DIV/0!
FEB	4244	102.3%	11698	106.8%	7398	109.0%	31231	112.6%	3716	107.6%	18204	107.2%	11026	92.2%	953	71.8%	0	#DIV/0!
MAR	4205	102.4%	11470	108.0%	7222	110.0%	29469	117.6%	3658	107.4%	18172	110.0%	11213	93.2%	1008	73.8%	0	#DIV/0!
APR	4297	106.6%	12293	105.6%	7874	108.0%	34294	107.7%	3896	108.8%	19873	103.3%	10648	88.4%	774	60.9%	0	#DIV/0!
MAY	5101	114.5%	13215	101.2%	8867	104.5%	38340	107.2%	4370	101.7%	20621	98.7%	8482	81.8%	306	50.3%	0	#DIV/0!
JUN	6840	123.4%	13350	99.5%	9475	102.2%	42291	102.3%	4429	99.2%	19771	95.3%	6022	79.1%	108	63.9%	0	#DIV/0!
JUL	8767	117.5%	13023	98.7%	9630	100.7%	42893	100.7%	4318	98.8%	18112	91.9%	4518	79.6%	64	76.6%	0	#DIV/0!
AUG	9749	111.6%	12794	98.6%	9642	100.0%	42897	99.9%	4252	98.5%	16525	92.2%	3928	80.7%	54	79.6%	0	#DIV/0!
SEP	10878	112.6%	12672	97.9%	9654	100.2%	42936	100.0%	4210	98.2%	15647	88.1%	3168	81.1%	43	83.7%	0	#DIV/0!
OCT	10547	111.9%	12772	98.4%	9603	100.4%	42773	100.1%	4237	98.5%	16276	89.7%	3413	80.7%	46	82.6%	0	#DIV/0!
NOV	8065	118.7%	12997	99.2%	9493	101.3%	42279	101.3%	4307	99.2%	18297	94.5%	5064	79.7%	77	71.4%	0	#DIV/0!
DEC	5272	121.8%	12874	101.0%	8995	103.8%	39139	106.2%	4251	101.0%	19527	99.3%	7742	81.9%	226	53.5%	0	#DIV/0!
FAL	9330	114.0%	12904	98.5%	9560	100.8%	42564	100.6%	4278	98.9%	17276	92.8%	4177	80.2%	58	77.6%	0	#DIV/0!
SPG	5075	113.0%	13068	101.4%	8841	104.3%	38178	106.8%	4306	101.9%	20191	99.1%	8536	82.7%	318	51.6%	0	#DIV/0!
SUM	9865	111.5%	12858	98.5%	9643	100.3%	42910	100.2%	4263	98.7%	16852	91.0%	3859	80.9%	53	79.2%	0	#DIV/0!
WIN	4305	107.8%	12237	103.9%	7947	107.3%	34643	106.9%	3914	105.9%	18912	104.3%	10346	89.3%	744	60.9%	0	#DIV/0!

	ALT 4 COMPARED TO UNREGULATED, NUMBERS IN LEFT PAIRED COLUMN ARE VALUE OF METRIC FOR UNREGULATED SCENARIO																	
	SSYOY		SSVEG		SSWOOD		SSCOARSE		SSFINENC		SFLOWVEL		SFMODVEL		SFHIVEL		unused	
	Index A	% diff	Index A	% diff	Index A	% diff	Index A	% diff	Index A	% diff	Index A	% diff	Index A	% diff	Index A	% diff	Index A	% diff
JAN	4080	104.2%	10716	106.8%	6707	109.7%	24844	118.6%	3483	106.6%	15337	107.0%	7949	83.3%	305	55.1%	0	#DIV/0!
FEB	3916	104.9%	9845	110.3%	6038	112.4%	19572	130.0%	3252	108.0%	14157	113.7%	9280	87.5%	543	59.1%	0	#DIV/0!
MAR	3874	105.0%	9716	110.0%	5945	112.0%	18980	129.4%	3218	107.7%	13986	115.4%	9812	88.9%	655	61.2%	0	#DIV/0!
APR	4096	103.6%	10769	108.6%	6715	110.6%	24927	121.3%	3484	107.9%	16401	110.2%	8843	84.5%	420	54.5%	0	#DIV/0!
MAY	4459	109.6%	12316	103.7%	7992	107.2%	33933	109.5%	3985	105.0%	18660	98.7%	6438	79.8%	145	57.9%	0	#DIV/0!
JUN	5184	119.8%	12683	99.9%	8732	104.7%	38133	105.9%	4173	100.6%	17326	93.2%	4401	79.9%	65	73.8%	0	#DIV/0!
JUL	6128	118.9%	12268	98.5%	9005	102.3%	39615	102.6%	4080	99.3%	14444	89.3%	3049	80.5%	42	81.0%	0	#DIV/0!
AUG	6704	118.3%	11967	97.8%	9087	101.2%	39998	101.3%	4018	98.7%	12638	87.7%	2485	80.4%	34	82.4%	0	#DIV/0!
SEP	8023	116.5%	11712	97.1%	9169	100.0%	40352	99.8%	3967	98.5%	11091	85.4%	2001	80.1%	28	82.1%	0	#DIV/0!
OCT	7485	117.9%	11795	97.4%	9101	100.6%	39951	100.8%	3990	98.4%	11622	86.0%	2119	80.0%	29	82.8%	0	#DIV/0!
NOV	5671	118.5%	12046	99.0%	8751	102.8%	37931	103.7%	4014	99.7%	14178	91.3%	3222	80.4%	45	80.0%	0	#DIV/0!
DEC	4487	109.0%	11792	102.4%	7871	106.8%	32854	109.9%	3852	103.3%	15732	97.8%	5110	80.2%	95	65.3%	0	#DIV/0!
FAL	6463	119.3%	11910	98.2%	8951	101.6%	39071	102.0%	4001	99.0%	12841	88.7%	2575	80.5%	35	82.9%	0	#DIV/0!
SPG	4368	108.2%	11935	104.1%	7714	107.9%	32001	111.7%	3862	105.1%	17509	99.9%	6257	80.1%	141	58.9%	0	#DIV/0!
SUM	6873	118.2%	11982	97.9%	9089	101.2%	39993	101.2%	4020	98.8%	12747	87.5%	2491	80.4%	34	82.4%	0	#DIV/0!
WIN	4049	104.0%	10509	107.5%	6563	110.4%	23746	121.0%	3429	106.9%	14825	107.9%	8020	84.4%	339	55.8%	0	#DIV/0!

	ALT 4 COMPARED TO UNREGULATED, NUMBERS IN LEFT PAIRED COLUMN ARE VALUE OF METRIC FOR UNREGULATED SCENARIO																	
	SSYOY		SSVEG		SSWOOD		SSCOARSE		SSFINENC		SFLOWVEL		SFMODVEL		SFHIVEL		unused	
	Index B	% diff	Index B	% diff	Index B	% diff	Index B	% diff	Index B	% diff	Index B	% diff	Index B	% diff	Index B	% diff	Index B	% diff
JAN	4750	112.7%	11919	104.0%	7812	106.5%	31959	110.3%	3909	104.4%	18130	103.3%	9701	90.0%	722	75.2%	0	#DIV/0!
FEB	4298	109.4%	11298	106.3%	7198	108.8%	27961	115.0%	3696	106.3%	17262	107.3%	10578	92.8%	937	76.9%	0	#DIV/0!
MAR	4176	107.5%	11121	106.9%	7023	109.1%	26996	115.5%	3628	107.0%	17146	108.6%	10865	93.2%	1003	77.7%	0	#DIV/0!
APR	4489	111.1%	11911	105.2%	7674	107.7%	31288	112.2%	3883	105.8%	18707	105.1%	10241	90.1%	782	72.4%	0	#DIV/0!
MAY	5516	117.1%	12890	101.9%	8682	104.9%	37732	106.4%	4243	102.6%	19972	99.2%	8346	84.7%	416	63.7%	0	#DIV/0!
JUN	7129	117.1%	13091	99.9%	9242	102.8%	40844	103.2%	4346	100.1%	19126	95.5%	6418	82.4%	222	61.3%	0	#DIV/0!
JUL	8783	113.9%	12827	99.0%	9414	101.2%	41706	101.3%	4272	99.3%	17281	93.4%	5149	82.3%	153	62.7%	0	#DIV/0!
AUG	9697	112.8%	12634	98.5%	9451	100.6%	41857	100.6%	4224	98.9%	16102	92.3%	4555	81.9%	123	62.6%	0	#DIV/0!
SEP	10947	110.8%	12477	98.0%	9494	100.0%	42057	99.9%	4189	98.5%	14960	90.3%	3654	80.7%	69	66.7%	0	#DIV/0!
OCT	10550	111.2%	12550	98.3%	9455	100.3%	41830	100.4%	4211	98.7%	15506	91.0%	3953	80.2%	80	63.8%	0	#DIV/0!
NOV	8428	114.0%	12718	99.5%	9260	101.6%	40743	102.0%	4241	99.7%	17295	94.6%	5530	82.7%	182	63.7%	0	#DIV/0!
DEC	6378	114.5%	12564	101.4%	8702	103.9%	37611	105.4%	4147	101.9%	18297	98.8%	7633	86.2%	407	68.6%	0	#DIV/0!
FAL	9519	112.3%	12631	98.9%	9371	100.9%	41356	101.1%	4226	99.2%	16410	92.8%	4707	81.4%	123	61.8%	0	#DIV/0!
SPG	5591	115.9%	12676	102.2%	8554	105.0%	36825	107.0%	4169	102.7%	19309	99.8%	8404	86.1%	466	67.4%	0	#DIV/0!
SUM	9780	112.7%	12652	98.5%	9454	100.6%	41877	100.6%	4229	98.9%	16164	92.1%	4459	81.7%	113	62.8%	0	#DIV/0!
WIN	4740	112.0%	11764	104.4%	7701	106.9%	31239	111.1%	3856	104.7%	17744	104.2%	9791	90.7%	761	75.4%	0	#DIV/0!

	ALT 4 COMPARED TO UNREGULATED, NUMBERS IN LEFT PAIRED COLUMN ARE VALUE OF METRIC FOR UNREGULATED SCENARIO																	
	SSYOY		SSVEG		SSWOOD		SSCOARSE		SSFINENC		SFLOWVEL		SFMODVEL		SFHIVEL		unused	
	Index C	% diff	Index C	% diff	Index C	% diff	Index C	% diff	Index C	% diff	Index C	% diff	Index C	% diff	Index C	% diff	Index C	% diff
JAN	3771	104.7%	9913	106.6%	6107	109.4%	21512	118.1%	3246	106.4%	13735	106.9%	6983	83.0%	253	55.7%	0	#DIV/0!
FEB	3586	106.1%	9146	109.9%	5514	112.2%	17139	128.7%	3028	108.2%	12660	113.8%	8361	86.7%	449	59.5%	0	#DIV/0!
MAR	3528	106.0%	9013	109.4%	5413	111.7%	16598	127.9%	2986	107.8%	12461	115.0%	9132	87.9%	555	61.1%	0	#DIV/0!
APR	3796	104.8%	9978	108.5%	6130	110.7%	21637	121.0%	3255	107.9%	14644	110.7%	8147	83.8%	354	55.4%	0	#DIV/0!
MAY	4223	109.0%	11494	104.3%	7357	107.6%	29703	110.9%	3740	105.2%	16962	99.3%	5825	79.9%	125	60.0%	0	#DIV/0!
JUN	4843	118.0%	11907	101.2%	8039	105.8%	33621	108.2%	3926	101.7%	15808	93.5%	3955	79.9%	58	75.9%	0	#DIV/0!
JUL	5615	117.1%	11621	99.1%	8322	103.3%	35328	104.4%	3872	100.1%	13054	88.8%	2700	80.3%	37	81.1%	0	#DIV/0!
AUG	6070	116.9%	11335	98.6%	8372	102.5%	35529	103.4%	3816	99.7%	11386	87.4%	2198	80.3%	30	83.3%	0	#DIV/0!
SEP	7181	115.4%	11122	97.4%	8600	100.7%	36590	100.5%	3786	98.7%	9708	84.9%	1722	80.0%	24	79.2%	0	#DIV/0!
OCT	6775	116.8%	11221	97.7%	8594	101.5%	36553	101.5%	3820	98.8%	10098	85.5%	1814	79.8%	25	80.0%	0	#DIV/0!
NOV	5243	116.6%	11326	99.5%	8065	103.6%	33470	105.1%	3796	100.1%	12452	90.5%	2756	80.3%	39	79.5%	0	#DIV/0!
DEC	4195	108.8%	10953	102.9%	7174	107.2%	28419	110.8%	3599	103.7%	14069	97.4%	4425	80.2%	81	65.4%	0	#DIV/0!
FAL	5913	117.5%	11265	98.6%	8334	102.5%	35039	103.2%	3806	99.4%	11178	88.1%	2199	80.4%	30	83.3%	0	#DIV/0!
SPG	4107	108.4%	11076	104.9%	7054	108.4%	27730	112.8%	3610	105.5%	15795	100.6%	5582	80.2%	120	60.8%	0	#DIV/0!
SUM	6224	116.6%	11352	98.4%	8429	102.2%	35804	102.8%	3823	99.5%	11337	87.0%	2175	80.3%	30	80.0%	0	#DIV/0!
WIN	3723	105.0%	9717	107.4%	5966	110.4%	20564	120.5%	3189	107.0%	13223	107.9%	6982	84.2%	279	56.6%	0	#DIV/0!

# ENO RIVER STATE PARK SITE TIME SERIES ANALYSIS FOR SHALLOW SLOW/FAST GUILDS

# BASED ON DAILY FLOWS

INDEX A = MEAN OF HABITAT EVENTS BETWEEN 50% AND 90% EXCEEDANCE  
 INDEX B = MEAN OF HABITAT EVENTS BETWEEN 10% AND 90% EXCEEDANCE  
 INDEX C = MEAN OF HABITAT EVENTS BETWEEN 50% AND 100% EXCEEDANCE  
 WINTER = DECEMBER THRU MARCH, SPRING = APRIL THRU JUNE  
 SUMMER = JULY THRU SEPTEMBER, FALL = OCTOBER AND NOVEMBER

30% INFLOW WITHDRAWN  
 70% AMBIENT FLOW LEFT IN STREAM  
 NO MAX WITHDRAWAL CAP  
 0

	ALT 5 COMPARED TO UNREGULATED, NUMBERS IN LEFT PAIRED COLUMN ARE VALUE OF METRIC FOR UNREGULATED SCENARIO																	
	SSYOY		SSVEG		SSWOOD		SSCOARSE		SSFINENC		SFLOWVEL		SFMODVEL		SFHIVEL		unused	
	MEDIAN	% diff	MEDIAN	% diff	MEDIAN	% diff	MEDIAN	% diff	MEDIAN	% diff	MEDIAN	% diff	MEDIAN	% diff	MEDIAN	% diff	MEDIAN	% diff
JAN	4350	115.1%	12408	104.3%	8093	108.6%	35273	107.7%	3997	106.2%	19429	103.0%	10141	85.0%	671	50.7%	0	#DIV/0!
FEB	4244	103.4%	11698	107.8%	7398	111.1%	31231	114.6%	3716	109.8%	18204	108.3%	11026	90.2%	953	63.8%	0	#DIV/0!
MAR	4205	103.5%	11470	109.5%	7222	112.2%	29469	119.8%	3658	109.8%	18172	111.2%	11213	91.1%	1008	66.1%	0	#DIV/0!
APR	4297	111.4%	12293	106.4%	7874	109.7%	34294	109.2%	3896	110.4%	19873	103.5%	10648	85.6%	774	52.7%	0	#DIV/0!
MAY	5101	119.3%	13215	101.2%	8867	105.5%	38340	109.1%	4370	101.7%	20621	98.1%	8482	77.7%	306	42.8%	0	#DIV/0!
JUN	6840	128.4%	13350	99.1%	9475	102.5%	42291	102.6%	4429	98.9%	19771	93.8%	6022	74.9%	108	59.3%	0	#DIV/0!
JUL	8767	120.2%	13023	98.4%	9630	100.8%	42893	100.8%	4318	98.5%	18112	89.8%	4518	75.6%	64	71.9%	0	#DIV/0!
AUG	9749	116.0%	12794	98.0%	9642	100.0%	42897	99.9%	4252	97.9%	16525	90.3%	3928	76.7%	54	75.9%	0	#DIV/0!
SEP	10878	116.1%	12672	97.3%	9654	100.0%	42936	99.8%	4210	97.7%	15647	85.0%	3168	76.9%	43	79.1%	0	#DIV/0!
OCT	10547	114.3%	12772	97.7%	9603	100.3%	42773	100.2%	4237	97.8%	16276	87.2%	3413	77.2%	46	80.4%	0	#DIV/0!
NOV	8065	123.0%	12997	98.8%	9493	101.5%	42279	101.4%	4307	99.0%	18297	92.7%	5064	75.6%	77	67.5%	0	#DIV/0!
DEC	5272	131.0%	12874	101.3%	8995	104.4%	39139	106.9%	4251	101.4%	19527	98.9%	7742	77.1%	226	46.9%	0	#DIV/0!
FAL	9330	116.3%	12904	98.2%	9560	100.8%	42564	100.7%	4278	98.4%	17276	90.7%	4177	76.3%	58	74.1%	0	#DIV/0!
SPG	5075	117.9%	13068	101.6%	8841	105.3%	38178	108.5%	4306	102.0%	20191	98.6%	8536	78.7%	318	44.3%	0	#DIV/0!
SUM	9865	115.5%	12858	98.2%	9643	100.3%	42910	100.2%	4263	98.2%	16852	88.6%	3859	77.0%	53	75.5%	0	#DIV/0!
WIN	4305	112.5%	12237	104.6%	7947	109.0%	34643	108.3%	3914	107.0%	18912	104.8%	10346	86.2%	744	52.6%	0	#DIV/0!

	ALT 5 COMPARED TO UNREGULATED, NUMBERS IN LEFT PAIRED COLUMN ARE VALUE OF METRIC FOR UNREGULATED SCENARIO																	
	SSYOY		SSVEG		SSWOOD		SSCOARSE		SSFINENC		SFLOWVEL		SFMODVEL		SFHIVEL		unused	
	Index A	% diff	Index A	% diff	Index A	% diff	Index A	% diff	Index A	% diff	Index A	% diff	Index A	% diff	Index A	% diff	Index A	% diff
JAN	4080	105.7%	10716	108.3%	6707	112.1%	24844	123.0%	3483	108.2%	15337	108.2%	7949	79.4%	305	47.5%	0	#DIV/0!
FEB	3916	105.9%	9845	112.5%	6038	115.3%	19572	136.8%	3252	109.9%	14157	116.2%	9280	84.1%	543	51.2%	0	#DIV/0!
MAR	3874	105.9%	9716	112.1%	5945	114.6%	18980	135.5%	3218	109.4%	13986	118.3%	9812	85.5%	655	53.4%	0	#DIV/0!
APR	4096	104.9%	10769	110.4%	6715	113.1%	24927	125.6%	3484	109.8%	16401	111.5%	8843	80.6%	420	46.9%	0	#DIV/0!
MAY	4459	112.8%	12316	104.1%	7992	108.7%	33933	111.6%	3985	105.7%	18660	97.7%	6438	75.5%	145	52.4%	0	#DIV/0!
JUN	5184	125.2%	12683	99.6%	8732	105.6%	38133	106.9%	4173	100.4%	17326	91.0%	4401	75.7%	65	70.8%	0	#DIV/0!
JUL	6128	123.7%	12268	97.9%	9005	102.6%	39615	102.9%	4080	98.9%	14444	86.5%	3049	76.6%	42	76.2%	0	#DIV/0!
AUG	6704	122.8%	11967	97.2%	9087	101.3%	39998	101.3%	4018	98.3%	12638	84.8%	2485	76.2%	34	76.5%	0	#DIV/0!
SEP	8023	120.7%	11712	96.4%	9169	99.8%	40352	99.5%	3967	98.1%	11091	82.0%	2001	76.1%	28	75.0%	0	#DIV/0!
OCT	7485	122.1%	11795	96.5%	9101	100.6%	39951	100.6%	3990	97.9%	11622	82.2%	2119	75.9%	29	79.3%	0	#DIV/0!
NOV	5671	123.7%	12046	98.6%	8751	103.1%	37931	104.3%	4014	99.5%	14178	88.9%	3222	76.3%	45	75.6%	0	#DIV/0!
DEC	4487	112.6%	11792	102.8%	7871	108.2%	32854	112.1%	3852	103.8%	15732	96.8%	5110	75.9%	95	60.0%	0	#DIV/0!
FAL	6463	124.0%	11910	97.6%	8951	101.7%	39071	102.2%	4001	98.7%	12841	85.3%	2575	76.5%	35	77.1%	0	#DIV/0!
SPG	4368	110.9%	11935	104.7%	7714	109.5%	32001	114.1%	3862	106.0%	17509	99.1%	6257	75.9%	141	53.2%	0	#DIV/0!
SUM	6873	122.6%	11982	97.2%	9089	101.2%	39993	101.2%	4020	98.4%	12747	84.4%	2491	76.3%	34	79.4%	0	#DIV/0!
WIN	4049	105.3%	10509	109.0%	6563	112.9%	23746	125.6%	3429	108.5%	14825	109.3%	8020	80.6%	339	48.1%	0	#DIV/0!

	ALT 5 COMPARED TO UNREGULATED, NUMBERS IN LEFT PAIRED COLUMN ARE VALUE OF METRIC FOR UNREGULATED SCENARIO																	
	SSYOY		SSVEG		SSWOOD		SSCOARSE		SSFINENC		SFLOWVEL		SFMODVEL		SFHIVEL		unused	
	Index B	% diff	Index B	% diff	Index B	% diff	Index B	% diff	Index B	% diff	Index B	% diff	Index B	% diff	Index B	% diff	Index B	% diff
JAN	4750	116.6%	11919	104.9%	7812	108.1%	31959	112.7%	3909	105.3%	18130	103.8%	9701	87.5%	722	69.4%	0	#DIV/0!
FEB	4298	112.4%	11298	107.6%	7198	110.7%	27961	118.3%	3696	107.6%	17262	108.6%	10578	90.7%	937	71.6%	0	#DIV/0!
MAR	4176	109.8%	11121	108.2%	7023	111.1%	26996	118.8%	3628	108.5%	17146	110.0%	10865	91.1%	1003	72.6%	0	#DIV/0!
APR	4489	114.5%	11911	106.2%	7674	109.4%	31288	114.8%	3883	106.9%	18707	105.7%	10241	87.3%	782	66.4%	0	#DIV/0!
MAY	5516	121.9%	12890	102.1%	8682	105.9%	37732	107.6%	4243	103.0%	19972	98.6%	8346	81.1%	416	56.5%	0	#DIV/0!
JUN	7129	121.4%	13091	99.7%	9242	103.2%	40844	103.7%	4346	99.9%	19126	94.1%	6418	78.5%	222	55.0%	0	#DIV/0!
JUL	8783	117.3%	12827	98.6%	9414	101.4%	41706	101.5%	4272	99.0%	17281	91.5%	5149	78.5%	153	56.9%	0	#DIV/0!
AUG	9697	115.9%	12634	98.1%	9451	100.6%	41857	100.6%	4224	98.6%	16102	90.3%	4555	77.9%	123	56.9%	0	#DIV/0!
SEP	10947	113.4%	12477	97.4%	9494	99.9%	42057	99.7%	4189	98.1%	14960	87.8%	3654	76.6%	69	62.3%	0	#DIV/0!
OCT	10550	113.7%	12550	97.7%	9455	100.3%	41830	100.3%	4211	98.3%	15506	88.5%	3953	76.2%	80	58.8%	0	#DIV/0!
NOV	8428	117.4%	12718	99.2%	9260	101.7%	40743	102.3%	4241	99.5%	17295	93.0%	5530	78.8%	182	57.7%	0	#DIV/0!
DEC	6378	118.5%	12564	101.6%	8702	104.7%	37611	106.5%	4147	102.2%	18297	98.2%	7633	82.9%	407	61.9%	0	#DIV/0!
FAL	9519	115.5%	12631	98.4%	9371	100.9%	41356	101.2%	4226	98.9%	16410	90.7%	4707	77.4%	123	55.3%	0	#DIV/0!
SPG	5591	120.2%	12676	102.4%	8554	106.0%	36825	108.3%	4169	103.1%	19309	99.3%	8404	82.8%	466	60.9%	0	#DIV/0!
SUM	9780	115.6%	12652	98.1%	9454	100.6%	41877	100.6%	4229	98.6%	16164	89.9%	4459	77.7%	113	56.6%	0	#DIV/0!
WIN	4740	115.5%	11764	105.3%	7701	108.5%	31239	113.5%	3856	105.7%	17744	104.8%	9791	88.3%	761	69.9%	0	#DIV/0!

	ALT 5 COMPARED TO UNREGULATED, NUMBERS IN LEFT PAIRED COLUMN ARE VALUE OF METRIC FOR UNREGULATED SCENARIO																	
	SSYOY		SSVEG		SSWOOD		SSCOARSE		SSFINENC		SFLOWVEL		SFMODVEL		SFHIVEL		unused	
	Index C	% diff	Index C	% diff	Index C	% diff	Index C	% diff	Index C	% diff	Index C	% diff	Index C	% diff	Index C	% diff	Index C	% diff
JAN	3771	106.7%	9913	108.3%	6107	112.0%	21512	122.6%	3246	108.2%	13735	108.3%	6983	79.1%	253	48.6%	0	#DIV/0!
FEB	3586	107.4%	9146	112.1%	5514	115.1%	17139	135.3%	3028	110.2%	12660	116.4%	8361	83.2%	449	51.7%	0	#DIV/0!
MAR	3528	106.9%	9013	111.3%	5413	114.0%	16598	133.6%	2986	109.4%	12461	117.7%	9132	84.5%	555	53.3%	0	#DIV/0!
APR	3796	106.2%	9978	110.3%	6130	113.1%	21637	125.3%	3255	109.8%	14644	112.2%	8147	79.9%	354	47.7%	0	#DIV/0!
MAY	4223	111.9%	11494	104.9%	7357	109.2%	29703	113.4%	3740	106.1%	16962	98.4%	5825	75.6%	125	54.4%	0	#DIV/0!
JUN	4843	122.8%	11907	101.0%	8039	106.8%	33621	109.7%	3926	101.8%	15808	91.3%	3955	75.7%	58	70.7%	0	#DIV/0!
JUL	5615	121.3%	11621	98.6%	8322	103.7%	35328	105.0%	3872	99.9%	13054	85.8%	2700	76.3%	37	78.4%	0	#DIV/0!
AUG	6070	121.1%	11335	98.1%	8372	102.9%	35529	103.9%	3816	99.5%	11386	84.3%	2198	76.0%	30	76.7%	0	#DIV/0!
SEP	7181	119.4%	11122	96.8%	8600	100.8%	36590	100.5%	3786	98.4%	9708	81.5%	1722	76.0%	24	75.0%	0	#DIV/0!
OCT	6775	120.5%	11221	96.8%	8594	101.3%	36553	101.2%	3820	98.1%	10098	81.8%	1814	75.7%	25	76.0%	0	#DIV/0!
NOV	5243	121.2%	11326	99.2%	8065	104.3%	33470	106.0%	3796	99.9%	12452	87.9%	2756	76.2%	39	74.4%	0	#DIV/0!
DEC	4195	112.3%	10953	103.5%	7174	108.9%	28419	113.5%	3599	104.5%	14069	96.4%	4425	75.9%	81	60.5%	0	#DIV/0!
FAL	5913	121.5%	11265	98.0%	8334	102.7%	35039	103.4%	3806	99.0%	11178	84.8%	2199	76.4%	30	76.7%	0	#DIV/0!
SPG	4107	110.9%	11076	105.6%	7054	110.1%	27730	115.5%	3610	106.5%	15795	99.8%	5582	75.9%	120	55.0%	0	#DIV/0!
SUM	6224	120.6%	11352	97.9%	8429	102.4%	35804	103.1%	3823	99.2%	11337	83.9%	2175	76.1%	30	76.7%	0	#DIV/0!
WIN	3723	106.6%	9717	109.0%	5966	112.8%	20564	125.1%	3189	108.7%	13223	109.2%	6982	80.3%	279	49.1%	0	#DIV/0!