



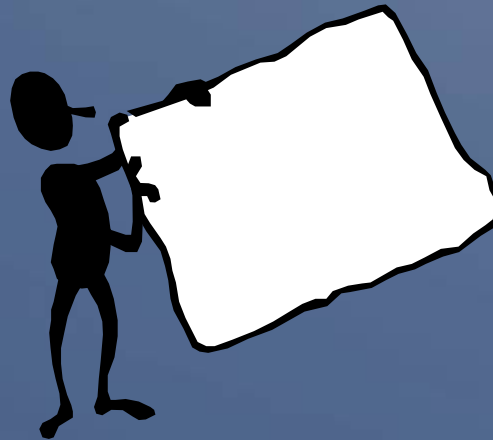
Brunswick County Proposed Interbasin Transfer

Public Meetings

April 16, 2009 – Bolivia
April 21, 2009 – Leland
April 23, 2009 – Carolina Shores
April 28, 2009 – Elizabethtown

Presentation Outline

- Brunswick County Water System
- Need for Project and Interbasin Transfer
- Interbasin Transfer Co-Applicants
- Environmental Impact Statement - Preliminary Alternatives
- Next Steps
- Public Comment



About Brunswick County's Water System

- Northwest Water Treatment Plant
 - Water Source = Cape Fear River Above Lock and Dam 1 (LCFWSA)
 - 24 MGD

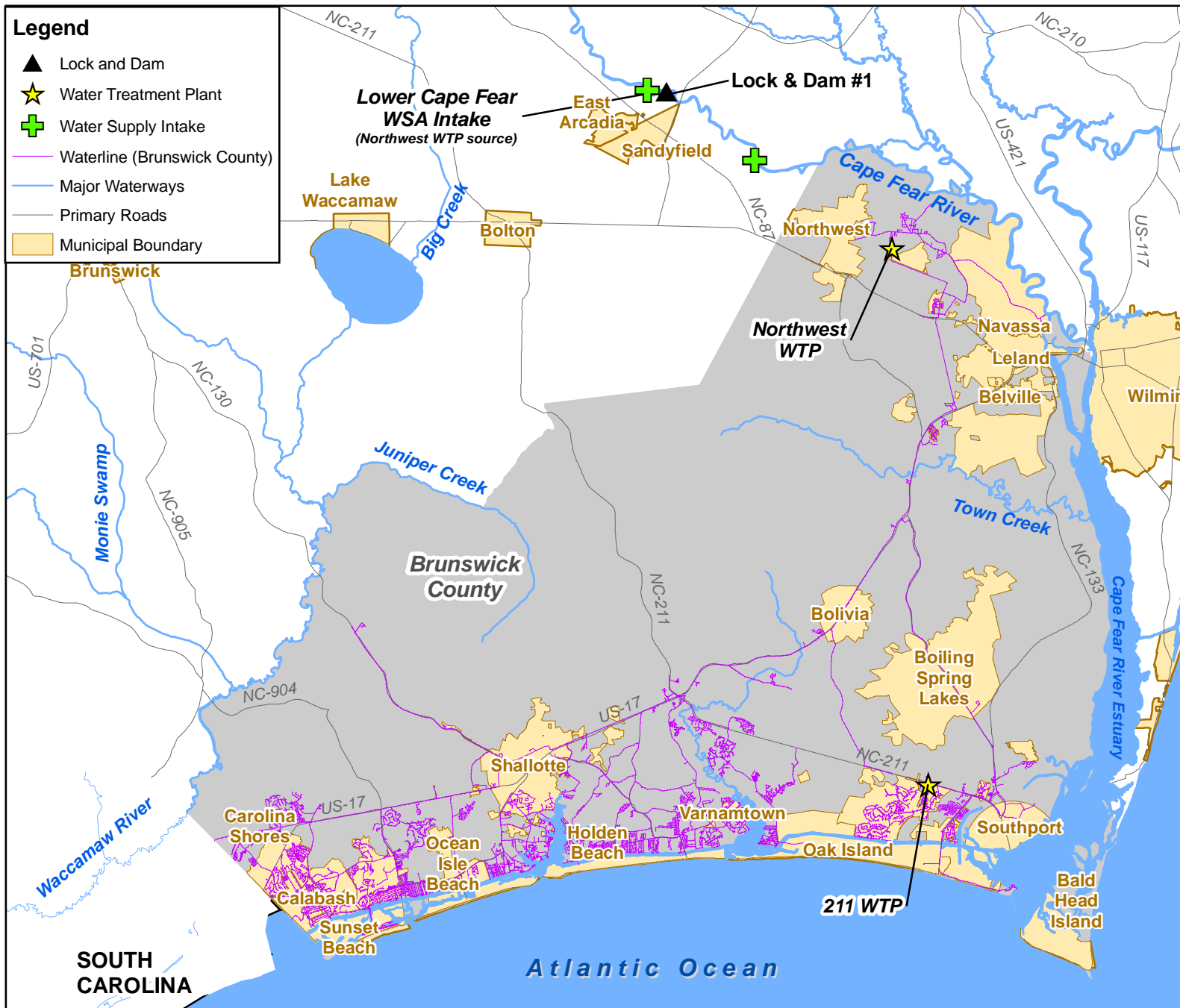
- 211 Water Treatment Plant
 - Water Source = Groundwater well; Castle Hayne Aquifer
 - 6 MGD

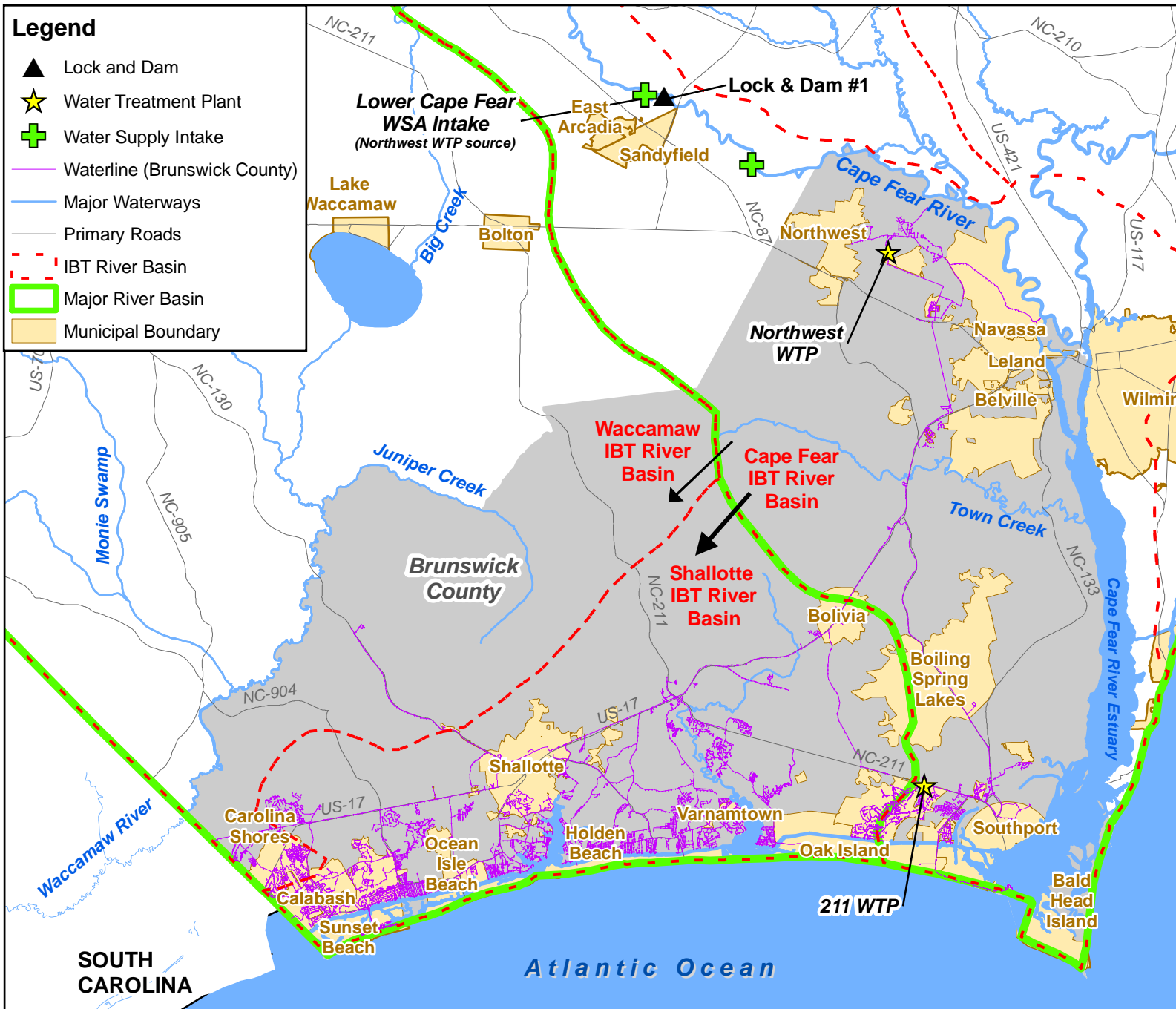


Courtesy of Google Earth

About Brunswick County's Water System

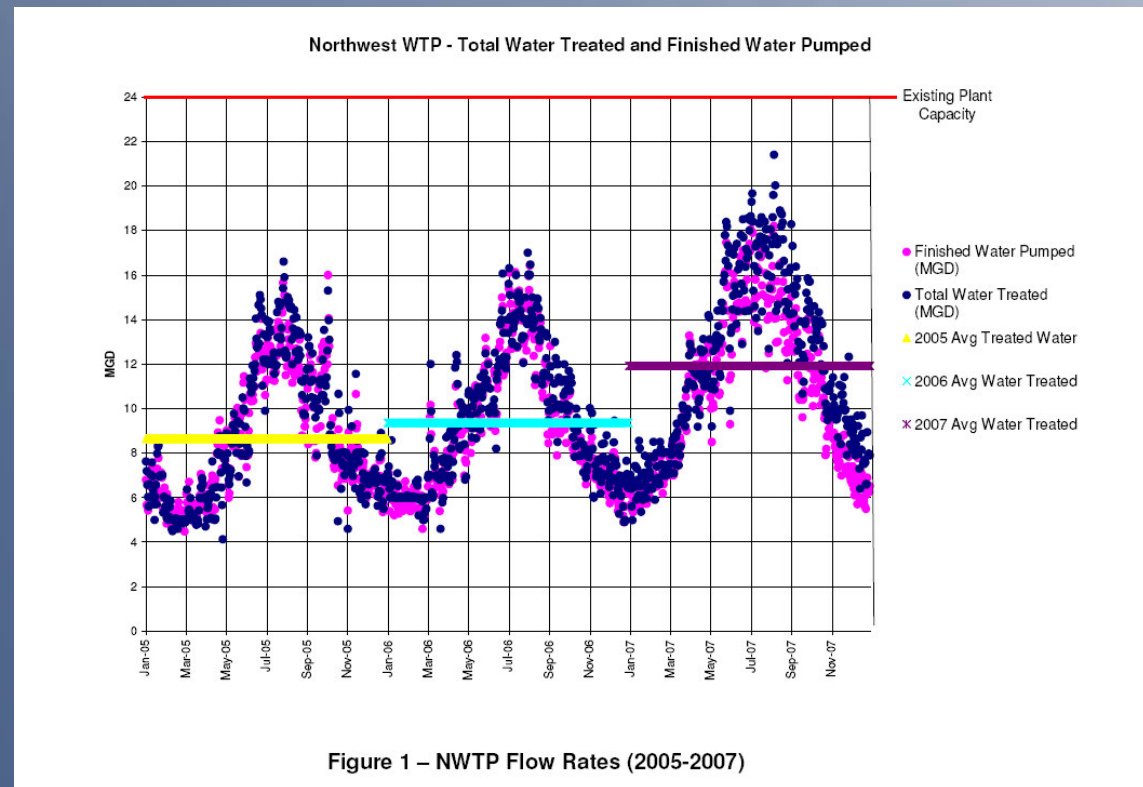
- Water provided to:
 - 11 wholesale customers
 - Bald Head Island, Boiling Spring Lakes, Caswell Beach, Holden Beach, North Brunswick SD, Northwest, Oak Island, Ocean Isle Beach, Shallotte, Navassa, and Southport
 - 30,500 retail and industrial customers
 - Within County jurisdiction
 - Retail customers residing in Sunset Beach, Carolina Shores, Bolivia, Calabash, and Varnamtown





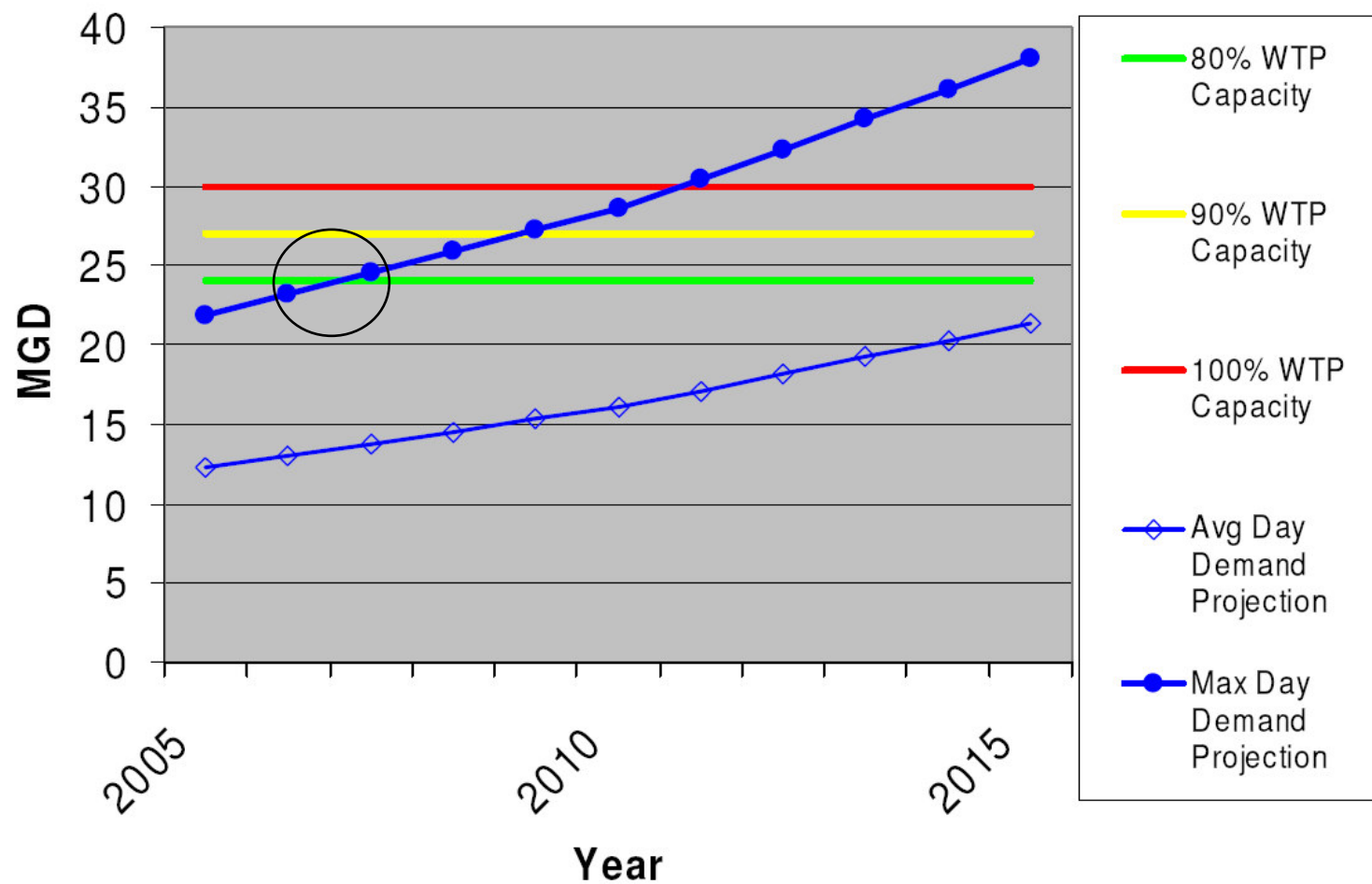
Project Need

- Northwest WTP approaching 80% capacity on peak days
- Need for increased treatment capacity to meet demand



From Hazen and Sawyer

Water Treatment Demand Projection – Total System



From Hazen and Sawyer (2006)

Grandfathered Transfer Capacity

- Transfer Capacity as of July 1, 1993

Water Transfer Element	Capacity (MGD)
Water Treatment Plant	24
Transmission/Distribution System	18
Discharge Capacity	10.44
Transfer Capacity	10.44

Interbasin Transfer in Brunswick County

- Maximum Daily Water Transfer: Actual 2006; Projected 2010 – 2040; in MGD

Year	Withdrawal from Source	Total Return to Source Basin	Interbasin Transfer – Shallotte	Interbasin Transfer – Waccamaw	Total Interbasin Transfer
2006	18.2	9.18	8.37	0.65	9.02
2010	20.04	10.06	9.24	0.75	9.99
2012	21.02	10.58	9.68	0.76	10.44
2020	24.96	12.24	11.92	0.80	12.72
2030	31.23	15.02	15.35	0.87	16.21
2040	37.50	18.21	18.35	0.94	19.29

Co-applicants for IBT Certificate

- 55 Public Water Supply Systems as defined by DEH in Brunswick County
 - 40 on groundwater
 - Of the remaining surface water systems, 7 are located in the receiving river basins
 - 2 of the 7, a hospital and a mobile home park
- Brunswick County (lead applicant)
- Co-applicants: the towns of Oak Island, Shallotte, Holden Beach, and Ocean Isle Beach

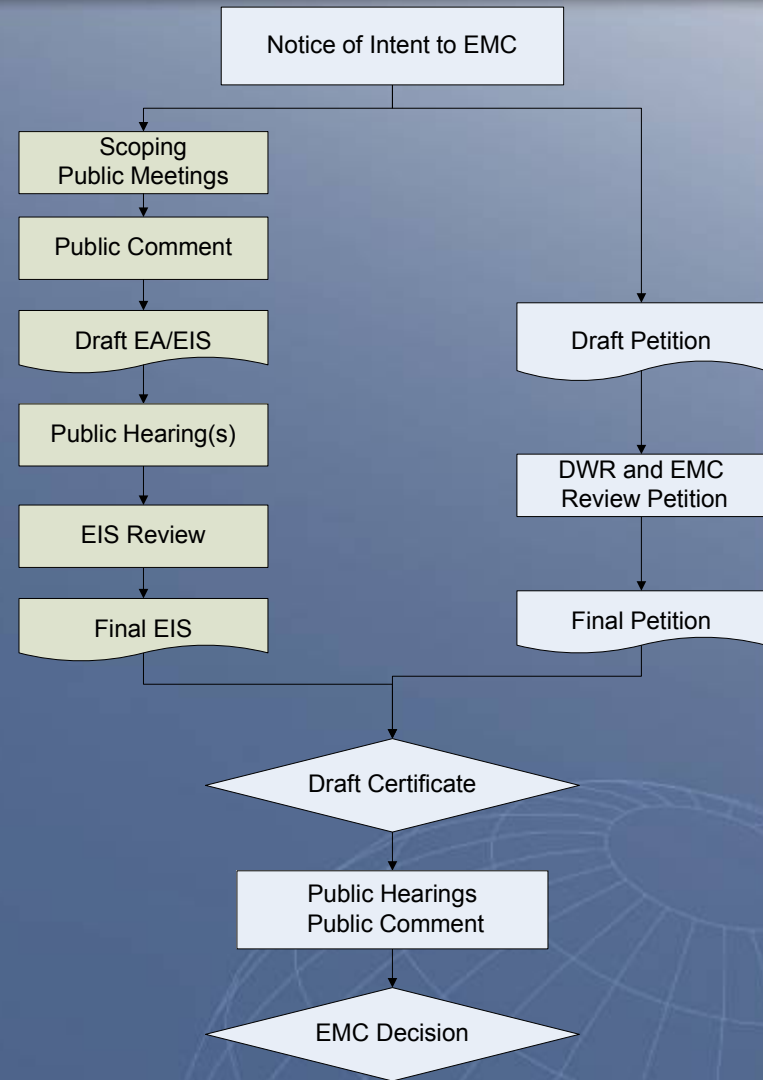
EIS - Preliminary Alternatives

1. No action
2. Increase in interbasin transfer to meet water demand in receiving river basins
3. Avoid interbasin transfer by using water source in receiving river basins
4. Avoid interbasin transfer by returning wastewater to the source river basin



Next Steps

- Current: Public Meetings, Public Comment, and Scoping
- Next:
 - IBT-EIS study plan with DWR
 - Prepare Environmental Impact Statement (EIS)
 - Public Review of Draft EIS
 - IBT Petition to the EMC



Comments

- Oral comments at four public meetings
- Written comments can be mailed to:
 - Brunswick County Public Utilities Department
Attn. Jerry Pierce, P.E.
P.O. Box 249
Bolivia, NC 28422
 - Or emailed to jpierce@brunsco.net
 - Comments accepted through May 29, 2009
- Presentations and other documents available at:
http://www.ncwater.org/Permits_and_Registration/Interbasin_Transfer/