
2015 Interbasin Transfer Certificate
2015 Annual Report

Prepared for
**Town of Cary
Town of Apex**

Submitted to
**North Carolina
Division of Water Resources**

April 2016

Submitted by
C. Jeff Adkins, PE
Water Resources Manager
Town of Cary
PO Box 8005
Cary, NC 27512-8005
919-462-3846
jeff.adkins@townofcary.org

This page has been intentionally left blank.

Contents

Section	Page
Introduction	1-1
Withdrawals, Discharges and Interbasin Transfers	2-1
2.1 IBT Certificate Limits	2-2
2.2 Summary of Water Withdrawals, Discharges and IBT	2-2
2.3 Monthly IBT	2-3
Consumptive Use by Basin	3-1
Interbasin Transfer Certificate Conditions	A
Appendices	A
A Daily Jordan Lake Water Supply Raw Water Withdrawals	
B Daily IBT Amounts	

This page has been intentionally left blank.

SECTION 1

Introduction

On March 12, 2015, the North Carolina Environmental Management Commission (EMC) granted an interbasin transfer (IBT) certificate modification to the Towns of Cary and Apex (Towns) with transfer limits of 31 million gallons per day (mgd) from the Haw River basin to the Neuse River basin, and 2 mgd from the Haw River basin to the Cape Fear River basin, calculated as a daily average of a calendar month.

This 2015 Annual Report is specified in the Compliance and Monitoring Plan (Plan) approved by the North Carolina Division of Water Resources (NCDWR) on July 14, 2015. The schedule for reporting on IBT certificate compliance is provided in the Plan and repeated below.

TABLE 1-1
Interbasin Transfer Compliance Monitoring and Reporting

Description ^a		Comments
IBT Limits	Daily average of a calendar month:	Daily average IBT is calculated daily and reported in the Annual IBT Report.
	- 31 mgd Haw to Neuse - 2 mgd Haw to Cape Fear	IBT calculated as the daily average of a calendar month reported on the Town of Cary website quarterly and in the Annual IBT Report. The percentages of water use in each basin, summarized historically, and set for calculating daily IBT for the next year will be reported in the Annual IBT Report.
Condition 1	Water Conservation Plan	Initial submittal to NCDWR by June 10, 2015, and then revised as needed to obtain NCDWR approval. Updates, if necessary, will be provided to NCDWR in the Towns' respective Secondary and Cumulative Impacts Master Management Plan biennial updates. Water Conservation Plan will always be available on the Town of Cary website. Status of the plan will be included in the Annual IBT Report.
Condition 2	Drought Management Plan	Initial submittal to NCDWR by June 10, 2015, and then revised as needed to obtain NCDWR approval. Updates will be provided to NCDWR as needed. Drought Management Plan will always be available on the Town of Cary website. Status of the plan will be included in the Annual IBT Report.
Condition 3	IBT Compliance and Monitoring Plan	Initial submittal to NCDWR by June 10, 2015, and then revised as needed to obtain NCDWR approval. IBT Compliance and Monitoring Plan will always be available on the Town of Cary website. Status of the plan will be included in the Annual IBT Report.
Condition 4	EMC Consideration of Alternative Sources	No reporting necessary.
Condition 5	EMC Consideration of Future Water Demand	No reporting necessary.
Condition 6	Resale of Transferred Water	Included in the Annual IBT Report.
Condition 7	EMC Consideration of Impacts	No reporting necessary.
Condition 8	Intake Access	Included in the Annual IBT Report.

^a Certificate conditions are described in Section 4.

To meet the annual reporting requirements of the Plan, the following sections of this 2015 Annual Report include:

- Status of compliance with IBT certificate limits.
- Summary of historical water withdrawals, reclaimed water usage, wastewater discharges and IBT for the January to December calendar years beginning with 2015.
- Table of calculated daily average of calendar month IBT amounts for the 2015 reporting year.
- Summary of amount of water used during previous years by customers in the Neuse River, Haw River, and Cape Fear River basins for use in determining the distribution of consumptive uses among the basins. Based on the amount of water used in each basin for the previous year, the distribution of consumptive use by basin in the following calendar year will be determined and documented.
- Status of compliance with IBT certificate conditions.

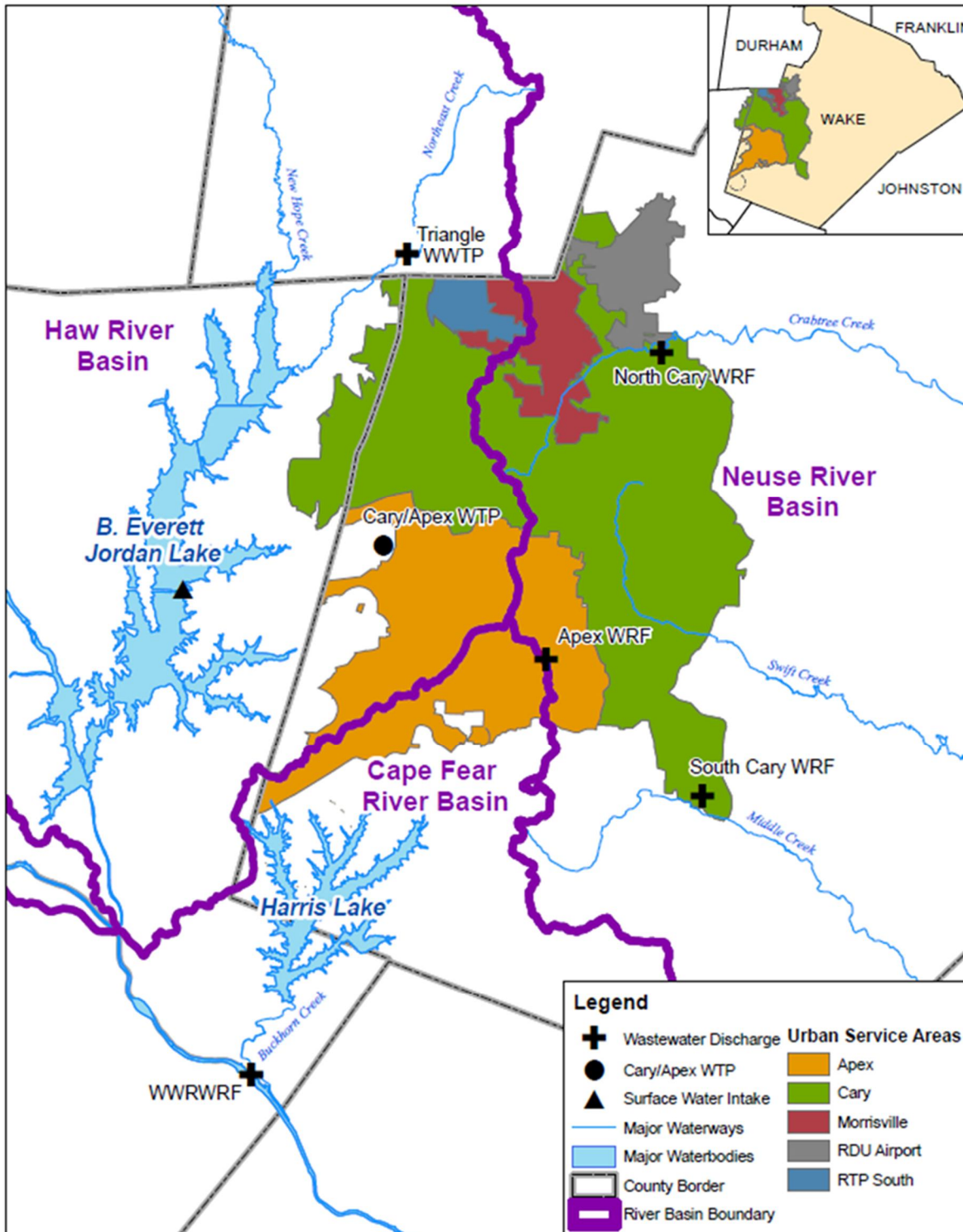
Appendix A includes a table of daily Jordan Lake water supply allocation raw water withdrawals for Cary/Apex, Morrisville and Wake County/RTP South for January 1 to December 31 of the 2015 reporting year.

Appendix B includes a table of calculated daily IBT amounts for January 1 to December 31 of the 2015 reporting year.

SECTION 2

Withdrawals, Discharges and Interbasin Transfers

The Towns' service areas include Cary, Apex, Morrisville, RDU Airport and RTP South (the Wake County portion of Research Triangle Park). Because the Towns' water system service areas straddle the ridge lines between interbasin transfer (IBT) basins, water is transferred via wastewater discharge, potable water consumptive use, or reclaimed water consumptive use. The combined IBT amount from the communities served is calculated on a daily basis.



2.1 IBT Certificate Limits

The Towns' IBT certificate limits transfers to 31 million gallons per day (mgd) from the Haw River basin to the Neuse River basin, and to 2 mgd from the Haw River basin to the Cape Fear River basin, calculated as a daily average of a calendar month.

During calendar year 2015, the Towns were in compliance with the monthly IBT certificate limits. The peak month transfer from the Haw River basin to the Neuse River basin was 15.4 mgd (50% of certificate limit) which occurred during June 2015. The peak month transfer from the Haw River basin to the Cape Fear River basin was 0.08 mgd (4% of certificate limit) which occurred during August 2015.

Daily IBT estimates for the Towns are included in Appendix B.

2.2 Summary of Water Withdrawals, Discharges and IBT

The Towns of Cary and Apex are co-owners of the Cary/Apex Water Treatment Facility which has its raw water intake in Jordan Lake. Cary/Apex, Morrisville and Wake County (for the portion of RTP within that county) each hold allocations of Jordan Lake water supply storage. Daily tracking of raw water withdrawals from Jordan Lake for the allocation holders for the period January 1, 2015 through December 31, 2015 is included in Appendix A.

The average daily withdrawal for the Towns was 21.2 mgd during 2015 (Table 2-1). Raw water withdrawals for Cary (including Morrisville and RTP South) and Apex by calendar year beginning with 2015 are summarized in Table 2-1.

Summary of Average Annual Jordan Lake Withdrawals ¹	
Year	Average Annual Withdrawal (mgd)
2015	21.2

1. Withdrawals from Jordan Lake at the Cary/Apex raw water intake. Includes water use by Apex, Cary, Morrisville and RTP South. Does not include water use by Durham.

The Town of Cary owns and operates the North Cary and South Cary Water Reclamation Facilities (NCWRF and SCWRF) which discharge to Crabtree Creek and Middle Creek, respectively. The Town of Apex owns and operates the Apex Water Reclamation Facility (AWRF) which discharges to Middle Creek. The Towns co-own the Western Wake Regional Water Reclamation Facility (WWRWRF) which discharges to the Cape Fear River. Process water from the CAWTF is discharged to a tributary of Jordan Lake. The Town of Cary also has the ability to discharge wastewater to the Durham County Triangle Wastewater Treatment Plant (Durham Co) which discharges to a tributary of Jordan Lake.

Average annual wastewater discharges for Cary and Apex beginning with 2015, identified by receiving basin, are summarized in Table 2-2.

Summary of Average Annual Wastewater Discharges							
Year	CAWTF Discharge (mgd)	Wastewater Conveyed to Durham Co. WWTP (mgd)	WWRWRF Discharge (mgd)	NCWRF Discharge (mgd)	SCWRF Discharge (mgd)	AWRF Discharge (mgd)	Total (mgd)
	Haw	Haw	Cape Fear	Neuse	Neuse	Neuse	
2015	3.3	0.02	4.6	6.0	5.3	1.2	20.42

The NCWRF and SCWRF produce reclaimed water which is used at each plant, pumped through distribution systems to customers and dispensed in bulk. The WWRWRF produces reclaimed water which is used at the plant and dispensed in bulk. The Town of Cary purchases reclaimed water from the TWWTP for distribution to customers in its western service area.

Reclaimed water flows for Cary and Apex for calendar years beginning with 2015 are summarized in Table 2-3.

Summary of Reclaimed Water Flows				
Year	NCWRF ¹ Reclaimed Water (mgd)	SCWRF ² Reclaimed Water (mgd)	WWWRF ³ Reclaimed Water (mgd)	Reclaimed Water Purchased from Durham Co. TWWTP (mgd)
2015	0.58	0.44	0.55	0.18
¹ includes distributed and bulk use				
² includes distributed, bulk, and plant use				
³ includes bulk and plant use				

Interbasin transfers for Cary and Apex for each calendar year beginning with 2015 are summarized in Table 2-4. Annual average day withdrawals from the Haw Basin are quantified as (1) returned to Haw subbasin, (2) transferred to Neuse subbasin, (3) returned to Cape Fear subbasin or (4) transferred to Cape Fear subbasin.

Summary of Average Annual Interbasin Transfers for Cary and Apex					
		Haw to Neuse		Haw to Cape Fear	
Year	Haw Basin Withdrawal (mgd)	Return to Haw Basin (mgd)	Haw-to-Neuse Interbasin Transfer (mgd)	Return to Cape Fear Basin (mgd)	Haw-to-Cape Fear Interbasin Transfer (mgd)
2015	21.2	4.3	12.9	4.0	0.03

2.3 Monthly IBT

Daily IBT is calculated based on a combination of meter data and assumptions, as defined in Section 2 of the Compliance and Monitoring Plan. Daily IBT data are then used to calculate the IBT certificate compliance metric – IBT calculated as the daily average of a calendar month.

Table 2-5 provides daily average interbasin transfers for each calendar month in 2015.

Monthly IBT for Calendar Year 2015		
Month	Average Daily IBT from Haw to Neuse (mgd)	Average Daily IBT from Haw to Cape Fear (mgd)
January	11.0	0.01
February	11.2	0.01
March	11.7	0.01
April	11.8	0.01
May	14.1	0.04
June	15.4	0.06
July	14.6	0.06
August	15.2	0.08
September	13.7	0.05
October	12.9	0.03
November	11.6	0.01
December	11.2	0.01
Certificate Limit	31.0	2.0
Maximum % of Limit	50%	4%

This page has been intentionally left blank.

SECTION 3

Consumptive Use by Basin

The average daily consumptive use was 14.4% for the period January 1, 2015 through December 31, 2015. Consumptive use has ranged between 10% and 23.5% since 2000. Historical consumptive use for each calendar year beginning with 2015 is shown in Table 3-1.

Historical Consumptive Use for Cary and Apex			
Year	Average Daily Finished Water Demand (mgd)	Average Daily Consumptive Use (mgd)	% Consumptive Use
2015	18.0	2.6	14.4%

Cary and Apex track historical use by assigning a subbasin to each customer. The distribution of consumptive uses between the Haw, Cape Fear, and Neuse River subbasins for 2015 was estimated based on historical water use in each basin as determined by billing records for Cary and Apex.

During 2015, based on 2014 billing records, it was assumed that 29.4% of water use occurred in the Haw subbasin, 1.2% of water use occurred in the Cape Fear subbasin, and 69.4% of water use occurred in the Neuse River subbasin. For purposes of calculating daily IBT amounts in 2016, Cary and Apex estimate that 29.7% of their water use will occur in the Haw subbasin, 1.4% of their water use will occur in the Cape Fear subbasin, and 68.9% of water use will occur in the Neuse River subbasin.

Table 3-2 shows the combined water use for Cary (including Morrisville and RTP South) and Apex, and the percentage water use in the Haw, Cape Fear, and Neuse River subbasins. The table also shows the Haw and Cape Fear use percentages that will be used for 2016 calculations.

Historic Water Use in the by Subbasin for Cary (including Morrisville and RTP South) and Apex (Annual Average Day)							
Year	Total Billed Water Use (mgd)	Haw Subbasin		Cape Fear Subbasin		Neuse Subbasin	
		Billed Water Use (mgd)	Percent Use	Billed Water Use (mgd)	Percent Use	Billed Water Use (mgd)	Percent Use
2014	14.57	4.27	29.3%	0.17	1.2%	10.13	69.5
2015	15.06	4.47	29.7%	0.21	1.4%	10.38	68.9
2016 percentages to be used for IBT calculations			29.7%		1.4%		

This page has been intentionally left blank.

SECTION 4

Interbasin Transfer Certificate Conditions

In accordance with the Compliance and Monitoring Plan, the status of the additional eight conditions that the Towns must meet in order to maintain compliance with the IBT certificate are reported annually. The IBT certificate conditions and their status during the 2015 calendar year are as follows.

1. **Water Conservation Plan** – Within 90 days of receipt of the IBT certificate, the Towns are required to submit a water conservation plan subject to approval by the North Carolina Division of Water Resources (NCDWR) that specifies the water conservation measures that will be implemented by the Towns to ensure the efficient use of the transferred water.

STATUS: The Water Conservation Plan was approved by NCDWR on July 14, 2015 and is available on the Town of Cary website. There were no updates during calendar year 2015.

2. **Drought Management Plan** – Within 90 days of receipt of the IBT certificate, the Towns are required to submit a drought management plan subject to approval by the NCDWR that specifies how the transfer will be managed to protect the source river basin (Haw River basin) during drought conditions or other emergencies that occur within the source river basin.

STATUS: The Drought Management Plan was approved by NCDWR on July 14, 2015 and is available on the Town of Cary website. There was one update approved by NCDWR on August 17, 2015 to update the Town of Cary's approved Water Shortage Response Plan. Those minor updates were to make the Water Shortage Response Plan consistent with changes in the Town's organizational structure, changes in Town Council procedures, and changes in utility billing procedures.

3. **Compliance and Monitoring Plan** – Within 90 days of receipt of the IBT certificate, the Towns are required to submit a quarterly compliance and monitoring plan subject to approval by the NCDWR.

STATUS: The Compliance and Monitoring Plan was approved by NCDWR on July 14, 2015 and is available on the Town of Cary website. There were no updates during calendar year 2015.

4. **EMC Consideration of Alternative Sources** – The EMC may reopen and amend the maximum amount of the IBT authorized if it appears that an alternative source of water is available to the Towns within the receiving basin (Neuse River basin).

STATUS: No reporting is necessary.

5. **EMC Consideration of Future Water Demands** – The EMC may reopen and amend the certificate if it is determined that the Towns' actual future water needs are significantly less than the projected water needs at the time the certificate was granted.

STATUS: No reporting is necessary.

6. **Resale of Transferred Water** – The Towns shall not resell the water that would be transferred pursuant to the IBT certificate to another public water system.

STATUS: There were no resales of transferred water by the Towns during calendar year 2015.

7. **EMC Consideration of Impacts** – The EMC may reopen the certificate and amend existing or require new conditions to ensure detrimental impacts are mitigated if environmental impacts are found to be substantially different from those on which the EMC's Findings of Fact were based.

STATUS: No reporting is necessary.

8. **Intake Access** – The Towns shall be required to provide access at their existing intake site to other Jordan Lake water allocation holders that need access to utilize their allocations to the extent that this additional use is determined to be feasible by the NCDWR.

STATUS: The Town of Cary has continued to provide retail water service to RTP South and the Town of Morrisville. Chatham County has continued to access its allocation through the Cary/Apex raw water intake. The City of Durham accessed its Jordan Lake water allocation through the Cary/Apex Water Treatment Facility for 20 days during calendar year 2015.

Appendices

A Daily Jordan Lake Water Supply Raw Water Withdrawals

B Daily IBT Amounts

This page has been intentionally left blank.

**APPENDIX A - Daily Jordan Lake Water Supply Raw Water Withdrawals
Jordan Lake Water Supply Storage Allocation Tracking
Cary/Apex, Morrisville, and Wake County/RTP South COMBINED**

Date	Reservoir Level (ft)	Cary/Apex/Morrisville/RTP Water Supply (mgd)	Cary/Apex/Morrisville/RTP Water Supply (cfs)	Inflow to Cary/Apex/Morrisville/RTP (cfs)	Cary/Apex/Morrisville/RTP Storage Level (ac-ft)	Cary/Apex/Morrisville/RTP Storage Level (%)
1/1/2015	217.38	16.92	26.18	26.2	17,862	100.00%
1/2/2015	217.10	15.32	23.70	23.7	17,862	100.00%
1/3/2015	216.95	15.66	24.23	24.2	17,862	100.00%
1/4/2015	216.86	16.99	26.28	26.3	17,862	100.00%
1/5/2015	216.71	18.19	28.14	28.1	17,862	100.00%
1/6/2015	216.63	18.01	27.86	27.9	17,862	100.00%
1/7/2015	216.64	15.84	24.50	24.5	17,862	100.00%
1/8/2015	216.47	16.56	25.62	25.6	17,862	100.00%
1/9/2015	216.46	18.21	28.17	28.2	17,862	100.00%
1/10/2015	216.36	16.35	25.29	25.3	17,862	100.00%
1/11/2015	216.27	16.13	24.95	25.0	17,862	100.00%
1/12/2015	216.78	17.91	27.71	27.7	17,862	100.00%
1/13/2015	217.48	16.33	25.26	25.3	17,862	100.00%
1/14/2015	217.82	16.54	25.59	25.6	17,862	100.00%
1/15/2015	217.87	16.15	24.98	25.0	17,862	100.00%
1/16/2015	217.70	14.46	22.37	22.4	17,862	100.00%
1/17/2015	217.51	16.69	25.82	25.8	17,862	100.00%
1/18/2015	217.37	17.80	27.54	27.5	17,862	100.00%
1/19/2015	217.20	17.81	27.55	27.6	17,862	100.00%
1/20/2015	217.04	17.21	26.62	26.6	17,862	100.00%
1/21/2015	216.82	16.36	25.31	25.3	17,862	100.00%
1/22/2015	216.60	17.38	26.89	26.9	17,862	100.00%
1/23/2015	216.52	17.50	27.07	27.1	17,862	100.00%
1/24/2015	216.85	16.22	25.09	25.1	17,862	100.00%
1/25/2015	217.22	17.24	26.67	26.7	17,862	100.00%
1/26/2015	217.35	16.38	25.34	25.3	17,862	100.00%
1/27/2015	217.26	18.42	28.50	28.5	17,862	100.00%
1/28/2015	217.06	18.78	29.05	29.1	17,862	100.00%
1/29/2015	216.84	16.18	25.03	25.0	17,862	100.00%
1/30/2015	216.61	17.11	26.47	26.5	17,862	100.00%
1/31/2015	216.39	17.51	27.09	27.1	17,862	100.00%
2/1/2015	216.24	18.05	27.92	27.9	17,862	100.00%
2/2/2015	216.23	16.94	26.21	26.2	17,862	100.00%
2/3/2015	216.17	17.22	26.64	26.6	17,862	100.00%
2/4/2015	216.15	16.77	25.94	25.9	17,862	100.00%
2/5/2015	216.12	16.78	25.96	26.0	17,862	100.00%
2/6/2015	216.12	17.02	26.33	26.3	17,862	100.00%
2/7/2015	216.11	16.80	25.99	26.0	17,862	100.00%
2/8/2015	216.13	18.54	28.68	28.7	17,862	100.00%
2/9/2015	216.27	16.82	26.02	26.0	17,862	100.00%
2/10/2015	216.53	17.06	26.39	26.4	17,862	100.00%
2/11/2015	216.74	18.51	28.63	28.6	17,862	100.00%
2/12/2015	216.68	16.87	26.10	26.1	17,862	100.00%
2/13/2015	216.55	15.55	24.06	24.1	17,862	100.00%
2/14/2015	216.53	16.33	25.26	25.3	17,862	100.00%
2/15/2015	216.32	19.04	29.45	29.5	17,862	100.00%

APPENDIX A - Daily Jordan Lake Water Supply Raw Water Withdrawals
Jordan Lake Water Supply Storage Allocation Tracking
Cary/Apex, Morrisville, and Wake County/RTP South COMBINED

Date	Reservoir Level (ft)	Cary/Apex/Morrisville/RTP Water Supply (mgd)	Cary/Apex/Morrisville/RTP Water Supply (cfs)	Inflow to Cary/Apex/Morrisville/RTP (cfs)	Cary/Apex/Morrisville/RTP Storage Level (ac-ft)	Cary/Apex/Morrisville/RTP Storage Level (%)
2/16/2015	216.26	18.94	29.30	29.3	17,862	100.00%
2/17/2015	216.10	16.54	25.59	25.6	17,862	100.00%
2/18/2015	216.10	15.55	24.06	24.1	17,862	100.00%
2/19/2015	216.16	18.19	28.14	28.1	17,862	100.00%
2/20/2015	216.20	19.23	29.75	29.7	17,862	100.00%
2/21/2015	216.23	18.92	29.27	29.3	17,862	100.00%
2/22/2015	216.27	21.03	32.53	32.5	17,862	100.00%
2/23/2015	216.48	21.29	32.94	32.9	17,862	100.00%
2/24/2015	216.65	16.02	24.78	24.8	17,862	100.00%
2/25/2015	216.77	17.03	26.35	26.3	17,862	100.00%
2/26/2015	216.85	17.54	27.13	27.1	17,862	100.00%
2/27/2015	216.94	17.05	26.38	26.4	17,862	100.00%
2/28/2015	216.94	16.56	25.62	25.6	17,862	100.00%
3/1/2015	217.08	18.52	28.65	28.7	17,862	100.00%
3/2/2015	217.63	20.20	31.25	31.2	17,862	100.00%
3/3/2015	218.00	16.60	25.68	25.7	17,862	100.00%
3/4/2015	217.93	16.53	25.57	25.6	17,862	100.00%
3/5/2015	218.21	18.49	28.60	28.6	17,862	100.00%
3/6/2015	219.13	19.20	29.70	29.7	17,862	100.00%
3/7/2015	219.11	19.43	30.06	30.1	17,862	100.00%
3/8/2015	218.79	16.38	25.34	25.3	17,862	100.00%
3/9/2015	218.26	23.16	35.83	35.8	17,862	100.00%
3/10/2015	217.59	14.92	23.08	23.1	17,862	100.00%
3/11/2015	216.86	19.88	30.75	30.8	17,862	100.00%
3/12/2015	216.37	17.87	27.64	27.6	17,862	100.00%
3/13/2015	216.30	16.74	25.90	25.9	17,862	100.00%
3/14/2015	216.32	16.15	24.98	25.0	17,862	100.00%
3/15/2015	216.34	18.54	28.68	28.7	17,862	100.00%
3/16/2015	216.37	19.81	30.65	30.6	17,862	100.00%
3/17/2015	216.42	19.91	30.80	30.8	17,862	100.00%
3/18/2015	216.35	16.61	25.70	25.7	17,862	100.00%
3/19/2015	216.44	18.67	28.88	28.9	17,862	100.00%
3/20/2015	216.70	18.84	29.15	29.1	17,862	100.00%
3/21/2015	217.05	17.95	27.77	27.8	17,862	100.00%
3/22/2015	217.22	17.94	27.75	27.8	17,862	100.00%
3/23/2015	217.32	16.58	25.65	25.6	17,862	100.00%
3/24/2015	217.27	17.13	26.50	26.5	17,862	100.00%
3/25/2015	216.98	19.20	29.70	29.7	17,862	100.00%
3/26/2015	216.80	18.88	29.21	29.2	17,862	100.00%
3/27/2015	216.65	18.15	28.08	28.1	17,862	100.00%
3/28/2015	216.55	15.85	24.52	24.5	17,862	100.00%
3/29/2015	216.35	18.13	28.05	28.0	17,862	100.00%
3/30/2015	216.34	18.34	28.37	28.4	17,862	100.00%
3/31/2015	216.35	19.36	29.95	29.9	17,862	100.00%
4/1/2015	216.35	18.46	28.56	28.6	17,862	100.00%
4/2/2015	216.24	17.69	27.37	27.4	17,862	100.00%

**APPENDIX A - Daily Jordan Lake Water Supply Raw Water Withdrawals
Jordan Lake Water Supply Storage Allocation Tracking
Cary/Apex, Morrisville, and Wake County/RTP South COMBINED**

Date	Reservoir Level (ft)	Cary/Apex/Morrisville/RTP Water Supply (mgd)	Cary/Apex/Morrisville/RTP Water Supply (cfs)	Inflow to Cary/Apex/Morrisville/RTP (cfs)	Cary/Apex/Morrisville/RTP Storage Level (ac-ft)	Cary/Apex/Morrisville/RTP Storage Level (%)
4/3/2015	216.27	17.98	27.82	27.8	17,862	100.00%
4/4/2015	216.26	17.70	27.38	27.4	17,862	100.00%
4/5/2015	216.25	18.49	28.60	28.6	17,862	100.00%
4/6/2015	216.25	17.61	27.24	27.2	17,862	100.00%
4/7/2015	216.31	19.99	30.92	30.9	17,862	100.00%
4/8/2015	216.34	19.50	30.17	30.2	17,862	100.00%
4/9/2015	216.99	18.46	28.56	28.6	17,862	100.00%
4/10/2015	217.47	17.37	26.87	26.9	17,862	100.00%
4/11/2015	217.36	19.64	30.38	30.4	17,862	100.00%
4/12/2015	217.13	20.45	31.64	31.6	17,862	100.00%
4/13/2015	216.87	22.83	35.32	35.3	17,862	100.00%
4/14/2015	216.68	16.94	26.21	26.2	17,862	100.00%
4/15/2015	216.62	16.26	25.15	25.2	17,862	100.00%
4/16/2015	216.58	17.39	26.90	26.9	17,862	100.00%
4/17/2015	216.53	17.62	27.26	27.3	17,862	100.00%
4/18/2015	216.44	22.03	34.08	34.1	17,862	100.00%
4/19/2015	216.63	18.40	28.46	28.5	17,862	100.00%
4/20/2015	218.15	18.25	28.23	28.2	17,862	100.00%
4/21/2015	219.03	18.87	29.19	29.2	17,862	100.00%
4/22/2015	218.92	19.70	30.48	30.5	17,862	100.00%
4/23/2015	218.50	18.34	28.37	28.4	17,862	100.00%
4/24/2015	217.98	18.76	29.02	29.0	17,862	100.00%
4/25/2015	217.51	17.18	26.58	26.6	17,862	100.00%
4/26/2015	216.94	19.34	29.92	29.9	17,862	100.00%
4/27/2015	216.62	20.10	31.09	31.1	17,862	100.00%
4/28/2015	216.54	20.63	31.91	31.9	17,862	100.00%
4/29/2015	216.46	18.76	29.02	29.0	17,862	100.00%
4/30/2015	216.42	18.83	29.13	29.1	17,862	100.00%
5/1/2015	216.91	19.44	30.07	30.1	17,862	100.00%
5/2/2015	217.33	19.80	30.63	30.6	17,862	100.00%
5/3/2015	217.23	19.42	30.04	30.0	17,862	100.00%
5/4/2015	216.99	18.80	29.08	29.1	17,862	100.00%
5/5/2015	216.70	19.46	30.10	30.1	17,862	100.00%
5/6/2015	216.46	23.25	35.97	36.0	17,862	100.00%
5/7/2015	216.34	20.15	31.17	31.2	17,862	100.00%
5/8/2015	216.30	20.73	32.07	32.1	17,862	100.00%
5/9/2015	216.31	22.23	34.39	34.4	17,862	100.00%
5/10/2015	216.37	19.75	30.55	30.6	17,862	100.00%
5/11/2015	216.33	18.87	29.19	29.2	17,862	100.00%
5/12/2015	216.36	22.49	34.79	34.8	17,862	100.00%
5/13/2015	216.36	21.11	32.66	32.7	17,862	100.00%
5/14/2015	216.35	22.78	35.24	35.2	17,862	100.00%
5/15/2015	216.36	23.98	37.10	37.1	17,862	100.00%
5/16/2015	216.35	22.52	34.84	34.8	17,862	100.00%
5/17/2015	216.34	21.82	33.76	33.8	17,862	100.00%
5/18/2015	216.32	22.94	35.49	35.5	17,862	100.00%

APPENDIX A - Daily Jordan Lake Water Supply Raw Water Withdrawals
Jordan Lake Water Supply Storage Allocation Tracking
Cary/Apex, Morrisville, and Wake County/RTP South COMBINED

Date	Reservoir Level (ft)	Cary/Apex/Morrisville/RTP Water Supply (mgd)	Cary/Apex/Morrisville/RTP Water Supply (cfs)	Inflow to Cary/Apex/Morrisville/RTP (cfs)	Cary/Apex/Morrisville/RTP Storage Level (ac-ft)	Cary/Apex/Morrisville/RTP Storage Level (%)
5/19/2015	216.31	24.97	38.63	38.6	17,862	100.00%
5/20/2015	216.29	23.41	36.22	36.2	17,862	100.00%
5/21/2015	216.28	23.90	36.97	37.0	17,862	100.00%
5/22/2015	216.26	24.34	37.65	37.7	17,862	100.00%
5/23/2015	216.27	22.49	34.79	34.8	17,862	100.00%
5/24/2015	216.23	24.76	38.30	38.3	17,862	100.00%
5/25/2015	216.19	21.11	32.66	32.7	17,862	100.00%
5/26/2015	216.15	30.22	46.75	46.8	17,862	100.00%
5/27/2015	216.14	25.66	39.70	39.7	17,862	100.00%
5/28/2015	216.10	23.49	36.34	36.3	17,862	100.00%
5/29/2015	216.06	26.75	41.38	41.4	17,862	100.00%
5/30/2015	216.02	27.89	43.15	42.1	17,862	100.00%
5/31/2015	215.94	28.20	43.63	-16.0	17,744	99.34%
6/1/2015	215.92	24.20	37.44	58.6	17,786	99.57%
6/2/2015	215.97	21.96	33.97	72.5	17,862	100.00%
6/3/2015	216.00	19.59	30.31	30.3	17,862	100.00%
6/4/2015	215.96	23.56	36.45	31.5	17,852	99.95%
6/5/2015	215.94	21.37	33.06	31.9	17,850	99.93%
6/6/2015	215.93	25.48	39.42	45.5	17,862	100.00%
6/7/2015	215.90	26.18	40.50	17.4	17,816	99.74%
6/8/2015	215.85	22.58	34.93	18.7	17,784	99.56%
6/9/2015	215.86	24.58	38.03	77.4	17,862	100.00%
6/10/2015	215.88	25.73	39.80	39.8	17,862	100.00%
6/11/2015	215.84	25.68	39.73	39.7	17,862	100.00%
6/12/2015	215.81	26.97	41.72	41.7	17,862	100.00%
6/13/2015	215.78	28.30	43.78	43.8	17,862	100.00%
6/14/2015	215.73	27.51	42.56	26.9	17,831	99.83%
6/15/2015	215.66	28.35	43.86	6.8	17,757	99.41%
6/16/2015	215.61	29.54	45.70	48.5	17,763	99.45%
6/17/2015	215.59	30.72	47.52	97.5	17,862	100.00%
6/18/2015	215.45	28.06	43.41	-60.9	17,655	98.84%
6/19/2015	215.59	23.93	37.02	141.4	17,862	100.00%
6/20/2015	215.57	24.89	38.50	38.5	17,862	100.00%
6/21/2015	215.55	25.29	39.12	39.1	17,862	100.00%
6/22/2015	215.51	22.58	34.93	34.9	17,862	100.00%
6/23/2015	215.44	29.76	46.04	6.7	17,784	99.56%
6/24/2015	215.39	28.57	44.20	48.1	17,792	99.61%
6/25/2015	215.33	26.87	41.57	26.2	17,761	99.44%
6/26/2015	215.41	25.52	39.48	90.3	17,862	100.00%
6/27/2015	215.72	22.15	34.27	34.3	17,862	100.00%
6/28/2015	215.99	21.31	32.97	33.0	17,862	100.00%
6/29/2015	216.11	23.86	36.91	36.9	17,862	100.00%
6/30/2015	216.08	26.25	40.61	40.6	17,862	100.00%
7/1/2015	216.12	25.38	39.26	39.3	17,862	100.00%
7/2/2015	216.11	24.76	38.30	38.3	17,862	100.00%
7/3/2015	216.10	24.24	37.50	37.5	17,862	100.00%

APPENDIX A - Daily Jordan Lake Water Supply Raw Water Withdrawals
Jordan Lake Water Supply Storage Allocation Tracking
Cary/Apex, Morrisville, and Wake County/RTP South COMBINED

Date	Reservoir Level (ft)	Cary/Apex/Morrisville/RTP Water Supply (mgd)	Cary/Apex/Morrisville/RTP Water Supply (cfs)	Inflow to Cary/Apex/Morrisville/RTP (cfs)	Cary/Apex/Morrisville/RTP Storage Level (ac-ft)	Cary/Apex/Morrisville/RTP Storage Level (%)
7/4/2015	216.12	17.62	27.26	27.3	17,862	100.00%
7/5/2015	216.21	23.75	36.74	36.7	17,862	100.00%
7/6/2015	216.32	19.78	30.60	30.6	17,862	100.00%
7/7/2015	216.40	19.38	29.98	30.0	17,862	100.00%
7/8/2015	216.48	26.67	41.26	41.3	17,862	100.00%
7/9/2015	216.49	23.55	36.43	36.4	17,862	100.00%
7/10/2015	216.47	24.34	37.65	37.7	17,862	100.00%
7/11/2015	216.43	25.81	39.93	39.9	17,862	100.00%
7/12/2015	216.34	26.45	40.92	40.9	17,862	100.00%
7/13/2015	216.38	22.92	35.46	35.5	17,862	100.00%
7/14/2015	216.35	22.75	35.19	35.2	17,862	100.00%
7/15/2015	216.37	22.76	35.21	35.2	17,862	100.00%
7/16/2015	216.34	25.37	39.25	39.2	17,862	100.00%
7/17/2015	216.28	24.96	38.61	38.6	17,862	100.00%
7/18/2015	216.24	25.40	39.29	39.3	17,862	100.00%
7/19/2015	216.23	24.23	37.48	37.5	17,862	100.00%
7/20/2015	216.18	21.83	33.77	33.8	17,862	100.00%
7/21/2015	216.15	28.81	44.57	44.6	17,862	100.00%
7/22/2015	216.09	24.50	37.90	37.9	17,862	100.00%
7/23/2015	216.02	24.90	38.52	-3.2	17,862	100.00%
7/24/2015	215.97	23.95	37.05	25.4	17,839	99.87%
7/25/2015	215.89	23.61	36.52	-15.5	17,736	99.29%
7/26/2015	215.81	25.04	38.74	-15.3	17,629	98.69%
7/27/2015	215.75	22.36	34.59	1.5	17,563	98.33%
7/28/2015	215.69	27.36	42.33	2.7	17,484	97.89%
7/29/2015	215.61	26.89	41.60	-15.0	17,372	97.26%
7/30/2015	215.56	27.57	42.65	17.6	17,322	96.98%
7/31/2015	215.47	27.10	41.92	-13.4	17,213	96.36%
8/1/2015	215.39	26.68	41.27	-5.2	17,120	95.85%
8/2/2015	215.31	28.11	43.49	-5.3	17,023	95.31%
8/3/2015	215.19	26.64	41.21	-39.6	16,863	94.41%
8/4/2015	215.14	28.53	44.14	20.5	16,816	94.15%
8/5/2015	215.04	29.98	46.38	-22.6	16,679	93.38%
8/6/2015	215.00	28.35	43.86	28.5	16,649	93.21%
8/7/2015	214.95	23.86	36.91	22.0	16,619	93.04%
8/8/2015	215.01	23.94	37.04	207.8	16,958	94.94%
8/9/2015	215.02	25.51	39.46	163.1	17,203	96.31%
8/10/2015	214.99	22.82	35.30	72.7	17,278	96.73%
8/11/2015	215.09	27.07	41.88	336.4	17,862	100.00%
8/12/2015	215.10	23.66	36.60	36.6	17,862	100.00%
8/13/2015	215.07	26.49	40.98	41.0	17,862	100.00%
8/14/2015	214.94	27.00	41.77	-55.5	17,669	98.92%
8/15/2015	214.84	25.24	39.05	-29.5	17,533	98.16%
8/16/2015	214.75	27.92	43.19	-20.6	17,407	97.45%
8/17/2015	214.65	24.65	38.13	-25.7	17,280	96.74%
8/18/2015	214.58	27.23	42.12	6.6	17,210	96.35%

APPENDIX A - Daily Jordan Lake Water Supply Raw Water Withdrawals
Jordan Lake Water Supply Storage Allocation Tracking
Cary/Apex, Morrisville, and Wake County/RTP South COMBINED

Date	Reservoir Level (ft)	Cary/Apex/Morrisville/RTP Water Supply (mgd)	Cary/Apex/Morrisville/RTP Water Supply (cfs)	Inflow to Cary/Apex/Morrisville/RTP (cfs)	Cary/Apex/Morrisville/RTP Storage Level (ac-ft)	Cary/Apex/Morrisville/RTP Storage Level (%)
8/19/2015	215.32	23.66	36.60	365.5	17,862	100.00%
8/20/2015	215.27	23.87	36.93	13.1	17,815	99.74%
8/21/2015	214.49	23.56	36.45	-602.6	16,547	92.64%
8/22/2015	214.38	26.26	40.62	-26.3	16,414	91.89%
8/23/2015	214.32	24.85	38.44	14.4	16,367	91.63%
8/24/2015	214.37	25.31	39.15	98.8	16,485	92.29%
8/25/2015	214.33	22.78	35.24	16.7	16,448	92.08%
8/26/2015	214.25	24.84	38.43	-16.0	16,340	91.48%
8/27/2015	214.16	26.29	40.67	-20.4	16,219	90.80%
8/28/2015	214.08	27.51	42.56	-6.9	16,121	90.25%
8/29/2015	213.97	24.96	38.61	-31.7	15,982	89.47%
8/30/2015	213.89	27.70	42.85	-6.9	15,883	88.92%
8/31/2015	213.98	20.15	31.17	127.2	16,073	89.99%
9/1/2015	213.98	23.50	36.35	49.6	16,100	90.13%
9/2/2015	213.96	23.66	36.60	35.0	16,097	90.12%
9/3/2015	213.87	23.04	35.64	-23.3	15,980	89.46%
9/4/2015	213.84	23.25	35.97	24.9	15,958	89.34%
9/5/2015	213.76	24.10	37.28	-16.4	15,851	88.74%
9/6/2015	213.67	21.96	33.97	-25.6	15,733	88.08%
9/7/2015	213.61	21.54	33.32	-1.4	15,664	87.70%
9/8/2015	213.51	24.53	37.95	-31.6	15,526	86.92%
9/9/2015	213.48	27.06	41.86	26.8	15,497	86.76%
9/10/2015	213.40	18.56	28.71	-13.9	15,412	86.28%
9/11/2015	213.33	22.02	34.06	-6.2	15,332	85.84%
9/12/2015	213.29	23.10	35.73	17.6	15,296	85.64%
9/13/2015	213.20	21.98	34.01	-22.6	15,184	85.01%
9/14/2015	213.13	23.34	36.11	-6.0	15,100	84.54%
9/15/2015	213.07	23.66	36.60	2.2	15,032	84.16%
9/16/2015	213.00	24.15	37.36	-5.0	14,948	83.69%
9/17/2015	212.93	25.46	39.39	-2.2	14,866	83.23%
9/18/2015	212.86	25.55	39.53	-3.1	14,781	82.75%
9/19/2015	212.77	28.51	44.11	-17.0	14,660	82.07%
9/20/2015	212.72	23.19	35.88	12.2	14,613	81.81%
9/21/2015	212.65	22.84	35.33	-3.7	14,536	81.38%
9/22/2015	212.58	25.07	38.78	-5.2	14,448	80.89%
9/23/2015	212.48	26.45	40.91	-33.8	14,300	80.06%
9/24/2015	212.46	23.87	36.92	27.9	14,282	79.96%
9/25/2015	212.57	20.69	32.01	125.3	14,467	80.99%
9/26/2015	212.82	16.63	25.73	231.2	14,875	83.28%
9/27/2015	213.04	21.13	32.68	298.2	15,401	86.22%
9/28/2015	213.21	22.35	34.58	351.5	16,030	89.74%
9/29/2015	213.56	22.16	34.28	673.9	17,298	96.85%
9/30/2015	214.25	22.17	34.30	318.4	17,862	100.00%
10/1/2015	214.67	22.17	34.30	34.3	17,862	100.00%
10/2/2015	215.19	20.27	31.36	31.4	17,862	100.00%
10/3/2015	218.48	19.20	29.70	29.7	17,862	100.00%

**APPENDIX A - Daily Jordan Lake Water Supply Raw Water Withdrawals
Jordan Lake Water Supply Storage Allocation Tracking
Cary/Apex, Morrisville, and Wake County/RTP South COMBINED**

Date	Reservoir Level (ft)	Cary/Apex/Morrisville/RTP Water Supply (mgd)	Cary/Apex/Morrisville/RTP Water Supply (cfs)	Inflow to Cary/Apex/Morrisville/RTP (cfs)	Cary/Apex/Morrisville/RTP Storage Level (ac-ft)	Cary/Apex/Morrisville/RTP Storage Level (%)
10/4/2015	220.62	18.48	28.59	28.6	17,862	100.00%
10/5/2015	221.26	20.28	31.37	31.4	17,862	100.00%
10/6/2015	221.39	23.69	36.65	36.6	17,862	100.00%
10/7/2015	220.90	19.34	29.92	29.9	17,862	100.00%
10/8/2015	220.14	24.81	38.38	38.4	17,862	100.00%
10/9/2015	219.31	21.98	34.00	34.0	17,862	100.00%
10/10/2015	218.60	21.84	33.79	33.8	17,862	100.00%
10/11/2015	217.86	23.93	37.02	37.0	17,862	100.00%
10/12/2015	217.12	22.47	34.76	34.8	17,862	100.00%
10/13/2015	216.70	22.91	35.44	35.4	17,862	100.00%
10/14/2015	216.62	24.77	38.32	38.3	17,862	100.00%
10/15/2015	216.58	22.79	35.26	35.3	17,862	100.00%
10/16/2015	216.56	24.61	38.07	38.1	17,862	100.00%
10/17/2015	216.55	20.56	31.81	31.8	17,862	100.00%
10/18/2015	216.46	24.86	38.46	38.5	17,862	100.00%
10/19/2015	216.40	22.16	34.28	34.3	17,862	100.00%
10/20/2015	216.37	21.76	33.66	33.7	17,862	100.00%
10/21/2015	216.33	25.17	38.94	38.9	17,862	100.00%
10/22/2015	216.28	24.21	37.45	37.5	17,862	100.00%
10/23/2015	216.24	23.03	35.63	35.6	17,862	100.00%
10/24/2015	216.19	22.96	35.52	35.5	17,862	100.00%
10/25/2015	216.16	22.39	34.64	34.6	17,862	100.00%
10/26/2015	216.10	21.91	33.89	33.9	17,862	100.00%
10/27/2015	216.09	22.85	35.35	35.3	17,862	100.00%
10/28/2015	216.07	19.99	30.92	30.9	17,862	100.00%
10/29/2015	216.13	21.51	33.28	33.3	17,862	100.00%
10/30/2015	216.24	20.21	31.26	31.3	17,862	100.00%
10/31/2015	216.27	20.76	32.12	32.1	17,862	100.00%
11/1/2015	216.32	21.48	33.23	33.2	17,862	100.00%
11/2/2015	216.95	19.89	30.77	30.8	17,862	100.00%
11/3/2015	218.55	19.57	30.27	30.3	17,862	100.00%
11/4/2015	219.37	20.67	31.98	32.0	17,862	100.00%
11/5/2015	219.42	20.61	31.88	31.9	17,862	100.00%
11/6/2015	219.02	19.54	30.23	30.2	17,862	100.00%
11/7/2015	218.77	18.66	28.87	28.9	17,862	100.00%
11/8/2015	218.39	21.51	33.28	33.3	17,862	100.00%
11/9/2015	218.33	20.60	31.87	31.9	17,862	100.00%
11/10/2015	220.21	19.83	30.68	30.7	17,862	100.00%
11/11/2015	221.13	19.82	30.66	30.7	17,862	100.00%
11/12/2015	221.23	21.29	32.94	32.9	17,862	100.00%
11/13/2015	220.77	19.93	30.83	30.8	17,862	100.00%
11/14/2015	220.17	19.81	30.65	30.6	17,862	100.00%
11/15/2015	219.53	20.52	31.74	31.7	17,862	100.00%
11/16/2015	218.85	17.38	26.89	26.9	17,862	100.00%
11/17/2015	218.13	20.47	31.67	31.7	17,862	100.00%
11/18/2015	217.56	20.42	31.59	31.6	17,862	100.00%

APPENDIX A - Daily Jordan Lake Water Supply Raw Water Withdrawals
Jordan Lake Water Supply Storage Allocation Tracking
Cary/Apex, Morrisville, and Wake County/RTP South COMBINED

Date	Reservoir Level (ft)	Cary/Apex/Morrisville/RTP Water Supply (mgd)	Cary/Apex/Morrisville/RTP Water Supply (cfs)	Inflow to Cary/Apex/Morrisville/RTP (cfs)	Cary/Apex/Morrisville/RTP Storage Level (ac-ft)	Cary/Apex/Morrisville/RTP Storage Level (%)
11/19/2015	218.90	19.79	30.62	30.6	17,862	100.00%
11/20/2015	220.42	18.60	28.77	28.8	17,862	100.00%
11/21/2015	220.64	18.39	28.45	28.4	17,862	100.00%
11/22/2015	220.23	19.83	30.68	30.7	17,862	100.00%
11/23/2015	219.52	21.57	33.37	33.4	17,862	100.00%
11/24/2015	218.69	18.98	29.36	29.4	17,862	100.00%
11/25/2015	218.10	19.75	30.55	30.6	17,862	100.00%
11/26/2015	217.78	19.71	30.49	30.5	17,862	100.00%
11/27/2015	217.51	18.09	27.99	28.0	17,862	100.00%
11/28/2015	217.38	18.11	28.02	28.0	17,862	100.00%
11/29/2015	217.25	20.00	30.94	30.9	17,862	100.00%
11/30/2015	217.25	19.54	30.23	30.2	17,862	100.00%
12/1/2015	217.74	18.81	29.10	29.1	17,862	100.00%
12/2/2015	218.05	18.71	28.94	28.9	17,862	100.00%
12/3/2015	217.81	20.39	31.54	31.5	17,862	100.00%
12/4/2015	217.38	19.81	30.65	30.6	17,862	100.00%
12/5/2015	216.84	17.62	27.26	27.3	17,862	100.00%
12/6/2015	216.27	19.20	29.70	29.7	17,862	100.00%
12/7/2015	216.01	21.54	33.32	33.3	17,862	100.00%
12/8/2015	216.09	19.79	30.62	30.6	17,862	100.00%
12/9/2015	216.15	18.27	28.26	28.3	17,862	100.00%
12/10/2015	216.21	20.36	31.50	31.5	17,862	100.00%
12/11/2015	216.23	19.57	30.27	30.3	17,862	100.00%
12/12/2015	216.27	19.92	30.82	30.8	17,862	100.00%
12/13/2015	216.30	19.45	30.09	30.1	17,862	100.00%
12/14/2015	216.32	19.11	29.56	29.6	17,862	100.00%
12/15/2015	216.37	20.32	31.44	31.4	17,862	100.00%
12/16/2015	216.40	18.80	29.08	29.1	17,862	100.00%
12/17/2015	216.75	19.10	29.55	29.5	17,862	100.00%
12/18/2015	218.05	19.58	30.29	30.3	17,862	100.00%
12/19/2015	218.40	17.08	26.42	26.4	17,862	100.00%
12/20/2015	218.36	17.99	27.83	27.8	17,862	100.00%
12/21/2015	218.27	19.62	30.35	30.4	17,862	100.00%
12/22/2015	219.62	18.34	28.37	28.4	17,862	100.00%
12/23/2015	223.55	17.81	27.55	27.6	17,862	100.00%
12/24/2015	227.15	17.75	27.46	27.5	17,862	100.00%
12/25/2015	228.41	18.48	28.59	28.6	17,862	100.00%
12/26/2015	228.99	16.75	25.91	25.9	17,862	100.00%
12/27/2015	229.18	18.07	27.95	28.0	17,862	100.00%
12/28/2015	229.04	17.47	27.03	27.0	17,862	100.00%
12/29/2015	228.90	17.52	27.10	27.1	17,862	100.00%
12/30/2015	230.44	18.21	28.17	28.2	17,862	100.00%
12/31/2015	232.60	19.22	29.73	29.7	17,862	100.00%

APPENDIX B - Daily IBT Amounts

	(1)	(2)	(3)	(4)	(5)=1+2 +3+4	(6)	(7)	(8)	(9)	(10)	(11)	(12)	(13)	(14)	(15)	(16)=6+7+1 2+13	(17)=8+9+ 14	(18)=10+ 11+15	(19)=16+1 7+18	(20)=8+9	(21)=18- 2-3-4
	Water Withdrawal/Purchase (mgd)				Consumptive Use (mgd)							Water Use Discharged as Wastewater (mgd)				Total Returned/Used in Each Basin (mgd)				Interbasin Transfer (mgd)	
	Jordan Lake Withdrawal	Neuse Basin Purchase			Total System Use	Haw		Cape Fear		Neuse		Haw		Cape Fear	Neuse	Haw	Cape Fear	Neuse	Total for All Basins	Haw to Cape Fear	Haw to Neuse
	Haw	Raleigh	Durham	Durham Co. Reclaimed		Potable	WRF Reuse	Potable	WRF Reuse	Potable	WRF Reuse	WTP Process Water	WRF	WRF	Total WRFs						
1/1/2015	16.92	0.00	0.00	0.034	16.95	0.221	0.034	0.009	0.000	0.522	0.547	1.92	0.74	3.34	9.61	2.92	3.35	10.68	16.95	0.009	10.65
1/2/2015	15.32	0.00	0.00	0.035	15.36	0.201	0.035	0.008	0.000	0.475	0.562	1.67	0.68	2.72	9.01	2.59	2.72	10.04	15.36	0.008	10.01
1/3/2015	15.66	0.00	0.00	0.035	15.70	0.205	0.035	0.008	0.000	0.483	0.248	1.77	0.76	2.80	9.39	2.77	2.80	10.12	15.70	0.008	10.08
1/4/2015	16.99	0.00	0.00	0.040	17.03	0.227	0.040	0.009	0.000	0.536	0.268	1.58	0.87	2.83	10.67	2.72	2.84	11.47	17.03	0.009	11.43
1/5/2015	18.19	0.00	0.00	0.030	18.22	0.244	0.030	0.010	0.000	0.575	0.319	1.65	1.03	2.93	11.44	2.95	2.94	12.33	18.22	0.010	12.30
1/6/2015	18.01	0.00	0.00	0.041	18.05	0.229	0.041	0.009	0.000	0.541	0.304	2.47	0.61	3.43	10.42	3.35	3.44	11.26	18.05	0.009	11.22
1/7/2015	15.84	0.00	0.00	0.034	15.87	0.212	0.034	0.009	0.000	0.500	0.279	1.46	0.00	3.40	9.98	1.71	3.41	10.76	15.87	0.009	10.73
1/8/2015	16.56	0.00	0.00	0.037	16.60	0.223	0.037	0.009	0.000	0.526	0.259	1.44	0.00	3.77	10.33	1.70	3.78	11.12	16.60	0.009	11.08
1/9/2015	18.21	0.00	0.00	0.046	18.26	0.225	0.046	0.009	0.000	0.532	0.243	2.92	0.00	3.86	10.42	3.19	3.87	11.19	18.26	0.009	11.14
1/10/2015	16.35	0.00	0.00	0.034	16.38	0.222	0.034	0.009	0.000	0.525	0.244	1.25	0.00	3.91	10.19	1.51	3.92	10.96	16.38	0.009	10.92
1/11/2015	16.13	0.00	0.00	0.040	16.17	0.219	0.040	0.009	0.000	0.517	0.268	1.26	0.00	3.92	9.94	1.52	3.93	10.72	16.17	0.009	10.68
1/12/2015	17.91	0.00	0.00	0.042	17.95	0.240	0.042	0.010	0.000	0.566	0.280	1.63	0.00	2.38	12.80	1.91	2.39	13.65	17.95	0.010	13.60
1/13/2015	16.33	0.00	0.00	0.033	16.36	0.210	0.033	0.009	0.000	0.496	0.594	2.08	0.00	4.14	8.80	2.32	4.15	9.89	16.36	0.009	9.86
1/14/2015	16.54	0.00	0.00	0.208	16.75	0.219	0.208	0.009	0.000	0.518	0.244	1.82	0.00	3.57	10.16	2.25	3.58	10.92	16.75	0.009	10.71
1/15/2015	16.15	0.00	0.00	0.064	16.21	0.210	0.064	0.009	0.000	0.496	0.257	1.92	0.00	3.39	9.87	2.19	3.40	10.62	16.21	0.009	10.56
1/16/2015	14.46	0.00	0.00	0.034	14.49	0.209	0.034	0.009	0.000	0.494	0.275	0.25	0.00	3.39	9.83	0.49	3.40	10.60	14.49	0.009	10.57
1/17/2015	16.69	0.00	0.00	0.030	16.72	0.215	0.030	0.009	0.000	0.508	0.651	2.08	0.00	3.68	9.55	2.33	3.69	10.71	16.72	0.009	10.68
1/18/2015	17.80	0.00	0.00	0.036	17.84	0.228	0.036	0.009	0.000	0.539	0.669	2.30	0.00	3.64	10.41	2.56	3.65	11.62	17.84	0.009	11.59
1/19/2015	17.81	0.00	0.00	0.039	17.85	0.230	0.039	0.009	0.000	0.544	0.271	2.17	0.00	3.44	11.14	2.44	3.45	11.96	17.85	0.009	11.92
1/20/2015	17.21	0.00	0.00	0.048	17.26	0.220	0.048	0.009	0.000	0.518	0.260	2.32	0.00	3.57	10.31	2.59	3.58	11.09	17.26	0.009	11.04
1/21/2015	16.36	0.00	0.00	0.036	16.40	0.212	0.036	0.009	0.000	0.501	0.282	1.97	0.00	3.55	9.84	2.22	3.56	10.62	16.40	0.009	10.58
1/22/2015	17.38	0.00	0.00	0.041	17.42	0.221	0.041	0.009	0.000	0.521	0.243	2.41	0.00	3.99	9.99	2.67	3.99	10.75	17.42	0.009	10.71
1/23/2015	17.50	0.00	0.00	0.034	17.53	0.221	0.034	0.009	0.000	0.522	0.241	2.49	0.00	3.53	10.49	2.75	3.54	11.25	17.53	0.009	11.22
1/24/2015	16.22	0.00	0.00	0.035	16.26	0.209	0.035	0.009	0.000	0.493	0.245	2.06	0.00	3.35	9.86	2.30	3.35	10.60	16.26	0.009	10.56
1/25/2015	17.24	0.00	0.00	0.041	17.28	0.228	0.041	0.009	0.000	0.538	0.254	1.78	0.00	3.89	10.54	2.05	3.90	11.33	17.28	0.009	11.29
1/26/2015	16.38	0.00	0.00	0.035	16.42	0.209	0.035	0.009	0.000	0.493	0.242	2.22	0.00	3.41	9.80	2.46	3.41	10.54	16.42	0.009	10.50
1/27/2015	18.42	0.00	0.00	0.038	18.46	0.235	0.038	0.010	0.000	0.554	0.257	2.50	0.00	3.78	11.09	2.77	3.79	11.90	18.46	0.010	11.86
1/28/2015	18.78	0.00	0.00	0.029	18.81	0.223	0.029	0.009	0.000	0.527	0.260	3.62	0.00	3.53	10.61	3.87	3.54	11.39	18.81	0.009	11.36
1/29/2015	16.18	0.00	0.00	0.094	16.27	0.220	0.094	0.009	0.000	0.518	0.248	1.34	0.00	3.65	10.20	1.65	3.66	10.96	16.27	0.009	10.87
1/30/2015	17.11	0.00	0.00	0.103	17.21	0.210	0.103	0.009	0.000	0.496	0.235	2.92	0.00	3.52	9.72	3.23	3.53	10.45	17.21	0.009	10.35
1/31/2015	17.51	0.00	0.00	0.102	17.61	0.229	0.102	0.009	0.000	0.541	0.241	2.01	0.00	4.05	10.43	2.34	4.06	11.21	17.61	0.009	11.11
2/1/2015	18.05	0.00	0.00	0.116	18.17	0.239	0.116	0.010	0.000	0.563	0.252	1.94	0.00	4.28	10.77	2.29	4.29	11.58	18.17	0.010	11.47
2/2/2015	16.94	0.00	0.00	0.099	17.04	0.219	0.099	0.009	0.000	0.518	0.272	2.12	0.00	3.56	10.25	2.44	3.57	11.03	17.04	0.009	10.94
2/3/2015	17.22	0.00	0.00	0.163	17.38	0.217	0.163	0.009	0.000	0.513	0.259	2.60	0.00	3.75	9.87	2.98	3.76	10.64	17.38	0.009	10.48
2/4/2015	16.77	0.00	0.00	0.106	16.88	0.213	0.106	0.009	0.000	0.502	0.297	2.42	0.00	3.41	9.92	2.74	3.42	10.72	16.88	0.009	10.61
2/5/2015	16.78	0.00	0.00	0.088	16.87	0.213	0.088	0.009	0.000	0.504	0.310	2.35	0.00	2.69	10.70	2.65	2.70	11.52	16.87	0.009	11.43
2/6/2015	17.02	0.00	0.00	0.168	17.19	0.228	0.168	0.009	0.000	0.537	0.284	1.70	0.00	4.44	9.82	2.10	4.45	10.64	17.19	0.009	10.48
2/7/2015	16.80	0.00	0.00	0.191	16.99	0.207	0.191	0.008	0.000	0.488	0.261	2.93	0.00	3.56	9.34	3.33	3.57	10.09	16.99	0.008	9.90
2/8/2015	18.54	0.00	0.00	0.279	18.82	0.243	0.279	0.010	0.000	0.575	0.481	2.26	0.00	4.29	10.68	2.78	4.30	11.73	18.82	0.010	11.45
2/9/2015	16.82	0.00	0.00	0.246	17.07	0.226	0.246	0.009	0.000	0.535	0.493	1.66	0.00	3.83	10.07	2.13	3.84	11.09	17.07	0.009	10.85

APPENDIX B – DAILY IBT AMOUNTS

	(1)	(2)	(3)	(4)	(5)=1+2 +3+4	(6)	(7)	(8)	(9)	(10)	(11)	(12)	(13)	(14)	(15)	(16)=6+7+1 2+13	(17)=8+9+ 14	(18)=10+ 11+15	(19)=16+1 7+18	(20)=8+9	(21)=18- 2-3-4
	Water Withdrawal/Purchase (mgd)				Consumptive Use (mgd)							Water Use Discharged as Wastewater (mgd)				Total Returned/Used in Each Basin (mgd)				Interbasin Transfer (mgd)	
	Jordan Lake Withdrawal	Neuse Basin Purchase			Total System Use	Haw		Cape Fear		Neuse		Haw		Cape Fear	Neuse	Haw	Cape Fear	Neuse	Total for All Basins	Haw to Cape Fear	Haw to Neuse
	Haw	Raleigh	Durham	Durham Co. Reclaimed		Potable	WRF Reuse	Potable	WRF Reuse	Potable	WRF Reuse	WTP Process Water	WRF	WRF	Total WRFs						
2/10/2015	17.06	0.00	0.00	0.032	17.09	0.217	0.032	0.009	0.000	0.513	0.002	2.31	0.00	3.60	10.41	2.56	3.61	10.92	17.09	0.009	10.89
2/11/2015	18.51	0.00	0.00	0.000	18.51	0.251	0.000	0.010	0.000	0.592	0.034	1.45	0.00	4.03	12.14	1.70	4.04	12.77	18.51	0.010	12.77
2/12/2015	16.87	0.00	0.00	0.000	16.87	0.190	0.000	0.008	0.000	0.448	0.045	3.96	0.00	3.17	9.05	4.15	3.17	9.55	16.87	0.008	9.55
2/13/2015	15.55	0.00	0.00	0.000	15.55	0.200	0.000	0.008	0.000	0.472	0.074	1.96	0.00	3.36	9.48	2.16	3.37	10.02	15.55	0.008	10.02
2/14/2015	16.33	0.00	0.00	0.000	16.33	0.216	0.000	0.009	0.000	0.511	0.070	1.61	0.00	3.76	10.16	1.83	3.76	10.74	16.33	0.009	10.74
2/15/2015	19.04	0.00	0.00	0.000	19.04	0.240	0.000	0.010	0.000	0.567	0.219	2.69	0.00	4.30	11.02	2.93	4.31	11.80	19.04	0.010	11.80
2/16/2015	18.94	0.00	0.00	0.204	19.14	0.267	0.204	0.011	0.000	0.631	0.311	3.13	0.00	2.48	12.11	3.60	2.49	13.06	19.14	0.011	12.85
2/17/2015	16.54	0.00	0.00	0.051	16.59	0.209	0.051	0.009	0.000	0.493	0.250	2.37	0.00	4.59	8.61	2.63	4.60	9.36	16.59	0.009	9.31
2/18/2015	15.55	0.00	0.00	0.026	15.58	0.207	0.026	0.008	0.000	0.489	0.238	1.47	0.00	2.96	10.18	1.70	2.96	10.91	15.58	0.008	10.88
2/19/2015	18.19	0.00	0.00	0.026	18.22	0.240	0.026	0.010	0.000	0.566	0.237	1.90	0.00	3.89	11.34	2.17	3.90	12.15	18.22	0.010	12.12
2/20/2015	19.23	0.00	0.00	0.025	19.26	0.245	0.025	0.010	0.000	0.578	0.198	2.60	0.00	4.90	10.70	2.87	4.91	11.48	19.26	0.010	11.45
2/21/2015	18.92	0.00	0.00	0.026	18.95	0.243	0.026	0.010	0.000	0.574	0.559	2.39	0.00	4.14	11.00	2.66	4.15	12.14	18.95	0.010	12.11
2/22/2015	21.03	0.00	0.00	0.032	21.06	0.280	0.032	0.011	0.000	0.661	0.568	2.00	0.00	4.62	12.89	2.31	4.63	14.12	21.06	0.011	14.08
2/23/2015	21.29	0.00	0.00	0.027	21.32	0.264	0.027	0.011	0.000	0.624	0.211	3.34	0.00	4.31	12.53	3.63	4.32	13.36	21.32	0.011	13.33
2/24/2015	16.02	0.00	0.00	0.029	16.05	0.205	0.029	0.008	0.000	0.484	0.196	2.11	0.00	3.52	9.50	2.34	3.53	10.18	16.05	0.008	10.15
2/25/2015	17.03	0.00	0.00	0.020	17.05	0.220	0.020	0.009	0.000	0.519	0.183	2.10	0.00	3.70	10.30	2.34	3.71	11.00	17.05	0.009	10.98
2/26/2015	17.54	0.00	0.00	0.027	17.57	0.216	0.027	0.009	0.000	0.510	0.209	2.88	0.00	3.55	10.17	3.12	3.56	10.88	17.57	0.009	10.86
2/27/2015	17.05	0.00	0.00	0.034	17.08	0.210	0.034	0.009	0.000	0.495	0.185	2.83	0.00	3.37	9.95	3.07	3.38	10.63	17.08	0.009	10.60
2/28/2015	16.56	0.00	0.00	0.034	16.59	0.231	0.034	0.009	0.000	0.546	0.183	0.87	0.00	3.77	10.95	1.14	3.78	11.68	16.59	0.009	11.65
3/1/2015	18.52	0.00	0.00	0.033	18.55	0.244	0.033	0.010	0.000	0.575	0.192	1.98	0.00	3.98	11.54	2.26	3.99	12.31	18.55	0.010	12.27
3/2/2015	20.20	0.00	0.00	0.049	20.25	0.251	0.049	0.010	0.000	0.592	0.216	3.19	0.00	3.90	12.04	3.49	3.91	12.85	20.25	0.010	12.80
3/3/2015	16.60	0.00	0.00	0.036	16.64	0.224	0.036	0.009	0.000	0.528	0.235	1.43	0.00	3.49	10.68	1.69	3.50	11.44	16.64	0.009	11.41
3/4/2015	16.53	0.00	0.00	0.097	16.63	0.223	0.097	0.009	0.000	0.527	0.276	1.45	0.00	3.65	10.39	1.77	3.66	11.20	16.63	0.009	11.10
3/5/2015	18.49	0.00	0.00	0.038	18.53	0.245	0.038	0.010	0.000	0.579	0.259	1.83	0.00	3.82	11.75	2.11	3.83	12.58	18.53	0.010	12.55
3/6/2015	19.20	0.00	0.00	0.036	19.24	0.251	0.036	0.010	0.000	0.591	0.237	2.19	0.00	3.97	11.95	2.48	3.98	12.78	19.24	0.010	12.74
3/7/2015	19.43	0.00	0.00	0.041	19.47	0.231	0.041	0.009	0.000	0.546	0.251	3.74	0.00	3.89	10.76	4.01	3.90	11.56	19.47	0.009	11.52
3/8/2015	16.38	0.00	0.00	0.047	16.43	0.223	0.047	0.009	0.000	0.526	0.249	1.27	0.00	4.03	10.07	1.54	4.04	10.84	16.43	0.009	10.80
3/9/2015	23.16	0.00	0.00	0.044	23.20	0.285	0.044	0.012	0.000	0.673	0.296	3.80	0.00	4.88	13.21	4.13	4.89	14.18	23.20	0.012	14.14
3/10/2015	14.92	0.00	0.00	0.171	15.09	0.204	0.171	0.008	0.000	0.483	0.243	1.18	0.00	3.36	9.44	1.56	3.37	10.17	15.09	0.008	10.00
3/11/2015	19.88	0.00	0.00	0.043	19.92	0.253	0.043	0.010	0.000	0.597	0.282	2.72	0.00	4.08	11.94	3.02	4.09	12.82	19.92	0.010	12.77
3/12/2015	17.87	0.00	0.00	0.045	17.92	0.227	0.045	0.009	0.000	0.535	0.261	2.50	0.00	3.69	10.64	2.77	3.70	11.44	17.92	0.009	11.40
3/13/2015	16.74	0.00	0.00	0.038	16.78	0.227	0.038	0.009	0.000	0.536	0.248	1.33	0.00	2.13	12.26	1.60	2.14	13.04	16.78	0.009	13.01
3/14/2015	16.15	0.00	0.00	0.041	16.19	0.196	0.041	0.008	0.000	0.462	0.257	2.88	0.00	3.73	8.62	3.12	3.73	9.34	16.19	0.008	9.30
3/15/2015	18.54	0.00	0.00	0.050	18.59	0.243	0.050	0.010	0.000	0.575	0.255	2.03	0.00	4.85	10.58	2.32	4.86	11.41	18.59	0.010	11.36
3/16/2015	19.81	0.00	0.00	0.050	19.86	0.257	0.050	0.011	0.000	0.608	0.439	2.35	0.00	4.15	11.99	2.66	4.16	13.04	19.86	0.011	12.99
3/17/2015	19.91	0.00	0.00	0.053	19.96	0.232	0.053	0.009	0.000	0.547	0.381	4.20	0.00	3.75	10.80	4.48	3.75	11.72	19.96	0.009	11.67
3/18/2015	16.61	0.00	0.00	0.044	16.65	0.213	0.044	0.009	0.000	0.502	0.329	2.18	0.00	3.45	9.93	2.43	3.46	10.76	16.65	0.009	10.72
3/19/2015	18.67	0.00	0.00	0.037	18.71	0.228	0.037	0.009	0.000	0.539	0.356	3.18	0.00	3.69	10.66	3.45	3.70	11.56	18.71	0.009	11.52
3/20/2015	18.84	0.00	0.00	0.031	18.87	0.248	0.031	0.010	0.000	0.584	0.238	2.03	0.00	3.82	11.91	2.31	3.83	12.73	18.87	0.010	12.70
3/21/2015	17.95	0.00	0.00	0.035	17.99	0.214	0.035	0.009	0.000	0.504	0.293	3.46	0.00	3.46	10.01	3.71	3.47	10.81	17.99	0.009	10.77
3/22/2015	17.94	0.00	0.00	0.032	17.97	0.225	0.032	0.009	0.000	0.531	0.286	2.67	0.00	3.79	10.43	2.93	3.80	11.24	17.97	0.009	11.21
3/23/2015	16.58	0.00	0.00	0.025	16.61	0.218	0.025	0.009	0.000	0.514	0.306	1.80	0.00	2.49	11.25	2.04	2.50	12.07	16.61	0.009	12.04

APPENDIX B – DAILY IBT AMOUNTS

	(1)	(2)	(3)	(4)	(5)=1+2 +3+4	(6)	(7)	(8)	(9)	(10)	(11)	(12)	(13)	(14)	(15)	(16)=6+7+1 2+13	(17)=8+9+ 14	(18)=10+ 11+15	(19)=16+1 7+18	(20)=8+9	(21)=18- 2-3-4
	Water Withdrawal/Purchase (mgd)				Consumptive Use (mgd)							Water Use Discharged as Wastewater (mgd)				Total Returned/Used in Each Basin (mgd)				Interbasin Transfer (mgd)	
	Jordan Lake Withdrawal	Neuse Basin Purchase			Total System Use	Haw		Cape Fear		Neuse		Haw		Cape Fear	Neuse	Haw	Cape Fear	Neuse	Total for All Basins	Haw to Cape Fear	Haw to Neuse
	Haw	Raleigh	Durham	Durham Co. Reclaimed		Potable	WRF Reuse	Potable	WRF Reuse	Potable	WRF Reuse	WTP Process Water	WRF	WRF	Total WRFs						
3/24/2015	17.13	0.00	0.00	0.021	17.15	0.219	0.021	0.009	0.000	0.517	0.289	2.26	0.00	4.35	9.48	2.50	4.36	10.29	17.15	0.009	10.27
3/25/2015	19.20	0.00	0.00	0.054	19.25	0.250	0.054	0.010	0.000	0.591	0.342	2.23	0.00	4.06	11.71	2.53	4.07	12.65	19.25	0.010	12.59
3/26/2015	18.88	0.00	0.00	0.049	18.93	0.225	0.049	0.009	0.000	0.532	0.316	3.59	0.00	3.76	10.45	3.86	3.77	11.30	18.93	0.009	11.25
3/27/2015	18.15	0.00	0.00	0.038	18.19	0.228	0.038	0.009	0.000	0.538	0.304	2.68	0.00	3.54	10.85	2.95	3.55	11.69	18.19	0.009	11.65
3/28/2015	15.85	0.00	0.00	0.037	15.89	0.203	0.037	0.008	0.000	0.479	0.286	2.08	0.00	3.33	9.47	2.32	3.34	10.23	15.89	0.008	10.19
3/29/2015	18.13	0.00	0.00	0.039	18.17	0.225	0.039	0.009	0.000	0.531	0.279	2.86	0.00	3.86	10.36	3.12	3.87	11.17	18.17	0.009	11.13
3/30/2015	18.34	0.00	0.00	0.041	18.38	0.239	0.041	0.010	0.000	0.564	0.312	2.12	0.00	3.89	11.21	2.40	3.90	12.08	18.38	0.010	12.04
3/31/2015	19.36	0.00	0.00	0.053	19.41	0.236	0.053	0.010	0.000	0.556	0.307	3.38	0.00	3.83	11.04	3.67	3.84	11.90	19.41	0.010	11.85
4/1/2015	18.46	0.00	0.00	0.043	18.50	0.228	0.043	0.009	0.000	0.539	0.342	2.97	0.00	3.76	10.61	3.24	3.77	11.49	18.50	0.009	11.45
4/2/2015	17.69	0.00	0.00	0.010	17.70	0.229	0.010	0.009	0.000	0.540	0.322	2.14	0.00	3.70	10.75	2.38	3.71	11.61	17.70	0.009	11.60
4/3/2015	17.98	0.00	0.00	0.008	17.99	0.238	0.008	0.010	0.000	0.561	0.338	1.82	0.00	4.06	10.95	2.07	4.07	11.85	17.99	0.010	11.85
4/4/2015	17.70	0.00	0.00	0.011	17.71	0.226	0.011	0.009	0.000	0.534	0.315	2.33	0.00	3.93	10.35	2.57	3.94	11.20	17.71	0.009	11.19
4/5/2015	18.49	0.00	0.00	0.005	18.50	0.232	0.005	0.009	0.000	0.549	0.318	2.68	0.00	4.11	10.59	2.92	4.12	11.46	18.50	0.009	11.45
4/6/2015	17.61	0.00	0.00	0.001	17.61	0.221	0.001	0.009	0.000	0.521	0.332	2.60	0.00	3.72	10.21	2.82	3.73	11.06	17.61	0.009	11.06
4/7/2015	19.99	0.00	0.00	0.044	20.03	0.238	0.044	0.010	0.000	0.562	0.325	3.83	0.00	3.96	11.07	4.11	3.97	11.95	20.03	0.010	11.91
4/8/2015	19.50	0.00	0.00	0.063	19.56	0.249	0.063	0.010	0.000	0.588	0.340	2.63	0.00	4.07	11.61	2.94	4.08	12.54	19.56	0.010	12.48
4/9/2015	18.46	0.00	0.00	0.018	18.48	0.227	0.018	0.009	0.000	0.536	0.630	3.03	0.00	3.61	10.42	3.28	3.62	11.58	18.48	0.009	11.56
4/10/2015	17.37	0.00	0.00	0.007	17.38	0.223	0.007	0.009	0.000	0.525	0.733	2.24	0.00	3.35	10.29	2.47	3.36	11.55	17.38	0.009	11.54
4/11/2015	19.64	0.00	0.00	0.003	19.64	0.242	0.003	0.010	0.000	0.571	0.724	3.20	0.00	3.94	10.95	3.44	3.95	12.25	19.64	0.010	12.24
4/12/2015	20.45	0.00	0.00	0.002	20.45	0.263	0.002	0.011	0.000	0.621	0.766	2.57	0.00	4.27	11.95	2.83	4.28	13.33	20.45	0.011	13.33
4/13/2015	22.83	0.00	0.00	0.087	22.92	0.273	0.087	0.011	0.000	0.645	0.750	4.34	0.00	4.28	12.53	4.70	4.29	13.93	22.92	0.011	13.84
4/14/2015	16.94	0.00	0.00	0.148	17.09	0.220	0.148	0.009	0.000	0.519	0.801	2.14	0.00	3.32	9.93	2.51	3.33	11.25	17.09	0.009	11.11
4/15/2015	16.26	0.00	0.00	0.047	16.31	0.200	0.047	0.008	0.000	0.471	0.747	2.72	0.00	2.93	9.18	2.97	2.94	10.40	16.31	0.008	10.35
4/16/2015	17.39	0.00	0.00	0.039	17.43	0.215	0.039	0.009	0.000	0.507	0.765	2.83	0.00	3.24	9.82	3.08	3.25	11.09	17.43	0.009	11.05
4/17/2015	17.62	0.00	0.00	0.054	17.67	0.226	0.054	0.009	0.000	0.533	0.729	2.31	0.00	3.64	10.17	2.59	3.65	11.43	17.67	0.009	11.38
4/18/2015	22.03	0.00	0.00	0.053	22.08	0.269	0.053	0.011	0.000	0.635	0.749	3.79	0.00	4.40	12.18	4.11	4.41	13.56	22.08	0.011	13.51
4/19/2015	18.40	0.00	0.00	0.045	18.45	0.227	0.045	0.009	0.000	0.537	0.754	2.97	0.00	3.47	10.43	3.24	3.48	11.73	18.45	0.009	11.68
4/20/2015	18.25	0.00	0.00	0.065	18.32	0.222	0.065	0.009	0.000	0.524	0.716	3.21	0.00	3.10	10.47	3.50	3.11	11.71	18.32	0.009	11.64
4/21/2015	18.87	0.00	0.00	0.073	18.94	0.231	0.073	0.009	0.000	0.545	0.781	3.24	0.00	3.57	10.49	3.54	3.58	11.82	18.94	0.009	11.75
4/22/2015	19.70	0.00	0.00	0.061	19.76	0.247	0.061	0.010	0.000	0.583	0.871	2.97	0.00	3.90	11.12	3.28	3.91	12.58	19.76	0.010	12.51
4/23/2015	18.34	0.00	0.00	0.055	18.40	0.228	0.055	0.009	0.000	0.539	0.790	2.87	0.00	3.55	10.35	3.15	3.56	11.68	18.40	0.009	11.62
4/24/2015	18.76	0.00	0.00	0.086	18.85	0.223	0.086	0.009	0.000	0.527	0.836	3.67	0.00	3.74	9.76	3.98	3.75	11.12	18.85	0.009	11.03
4/25/2015	17.18	0.00	0.00	0.042	17.22	0.223	0.042	0.009	0.000	0.526	0.930	2.07	0.00	3.46	9.96	2.33	3.47	11.42	17.22	0.009	11.38
4/26/2015	19.34	0.00	0.00	0.043	19.38	0.237	0.043	0.010	0.000	0.560	0.885	3.24	0.00	3.99	10.41	3.52	4.00	11.86	19.38	0.010	11.82
4/27/2015	20.10	0.00	0.00	0.066	20.17	0.239	0.066	0.010	0.000	0.564	0.942	3.90	0.00	3.71	10.74	4.21	3.72	12.24	20.17	0.010	12.18
4/28/2015	20.63	0.00	0.00	0.068	20.70	0.235	0.068	0.010	0.000	0.554	0.936	4.73	0.00	3.58	10.59	5.03	3.59	12.08	20.70	0.010	12.01
4/29/2015	18.76	0.00	0.00	0.044	18.80	0.241	0.044	0.010	0.000	0.569	0.948	2.42	0.00	3.60	10.97	2.70	3.61	12.49	18.80	0.010	12.45
4/30/2015	18.83	0.00	0.00	0.066	18.90	0.222	0.066	0.009	0.000	0.525	0.901	3.77	0.00	3.52	9.88	4.06	3.53	11.31	18.90	0.009	11.24
5/1/2015	19.44	0.00	0.00	0.053	19.49	0.234	0.053	0.010	0.000	0.552	0.872	3.59	0.00	3.52	10.66	3.88	3.53	12.08	19.49	0.010	12.03
5/2/2015	19.80	0.00	0.00	0.073	19.87	0.237	0.073	0.010	0.000	0.559	0.857	3.77	0.00	3.81	10.55	4.08	3.82	11.97	19.87	0.010	11.90
5/3/2015	19.42	0.00	0.00	0.058	19.48	0.249	0.058	0.010	0.000	0.587	0.878	2.57	0.00	4.02	11.11	2.88	4.03	12.57	19.48	0.010	12.51
5/4/2015	18.80	0.00	0.00	0.082	18.88	0.229	0.082	0.009	0.000	0.541	0.915	3.28	0.00	3.64	10.19	3.59	3.65	11.64	18.88	0.009	11.56

APPENDIX B – DAILY IBT AMOUNTS

	(1)	(2)	(3)	(4)	(5)=1+2 +3+4	(6)	(7)	(8)	(9)	(10)	(11)	(12)	(13)	(14)	(15)	(16)=6+7+1 2+13	(17)=8+9+ 14	(18)=10+ 11+15	(19)=16+1 7+18	(20)=8+9	(21)=18- 2-3-4
	Water Withdrawal/Purchase (mgd)				Consumptive Use (mgd)							Water Use Discharged as Wastewater (mgd)				Total Returned/Used in Each Basin (mgd)				Interbasin Transfer (mgd)	
	Jordan Lake Withdrawal	Neuse Basin Purchase			Total System Use	Haw		Cape Fear		Neuse		Haw		Cape Fear	Neuse	Haw	Cape Fear	Neuse	Total for All Basins	Haw to Cape Fear	Haw to Neuse
	Haw	Raleigh	Durham	Durham Co. Reclaimed		Potable	WRF Reuse	Potable	WRF Reuse	Potable	WRF Reuse	WTP Process Water	WRF	WRF	Total WRFs						
5/5/2015	19.46	0.00	0.00	0.120	19.58	0.242	0.120	0.010	0.000	0.572	1.039	3.10	0.00	3.72	10.78	3.46	3.73	12.39	19.58	0.010	12.27
5/6/2015	23.25	0.00	0.00	0.186	23.44	0.574	0.186	0.023	0.000	1.354	1.091	3.33	0.00	4.32	12.55	4.09	4.35	15.00	23.44	0.023	14.81
5/7/2015	20.15	0.00	0.00	0.096	20.25	0.247	0.096	0.010	0.000	0.583	0.963	3.44	0.00	3.89	11.02	3.78	3.90	12.56	20.25	0.010	12.47
5/8/2015	20.73	0.00	0.00	0.167	20.90	0.250	0.167	0.010	0.000	0.589	1.049	3.92	0.00	3.83	11.08	4.34	3.84	12.72	20.90	0.010	12.55
5/9/2015	22.23	0.00	0.00	0.090	22.32	0.631	0.090	0.026	0.000	1.490	1.091	2.92	0.00	4.25	11.83	3.64	4.27	14.41	22.32	0.026	14.32
5/10/2015	19.75	0.00	0.00	0.057	19.81	0.248	0.057	0.010	0.000	0.586	0.982	2.93	0.00	4.05	10.95	3.24	4.06	12.52	19.81	0.010	12.46
5/11/2015	18.87	0.00	0.00	0.101	18.97	0.246	0.101	0.010	0.000	0.580	0.975	2.25	0.00	3.89	10.92	2.60	3.90	12.47	18.97	0.010	12.37
5/12/2015	22.49	0.00	0.00	0.172	22.66	0.282	0.172	0.012	0.000	0.666	0.633	3.48	0.00	5.18	12.24	3.93	5.19	13.54	22.66	0.012	13.37
5/13/2015	21.11	0.00	0.00	0.134	21.24	0.260	0.134	0.011	0.000	0.614	0.716	3.56	0.00	4.14	11.81	3.95	4.15	13.14	21.24	0.011	13.01
5/14/2015	22.78	0.00	0.00	0.375	23.16	0.808	0.375	0.033	0.000	1.908	1.047	3.31	0.00	4.32	11.36	4.49	4.35	14.31	23.16	0.033	13.94
5/15/2015	23.98	0.00	0.00	0.136	24.12	1.039	0.136	0.042	0.000	2.453	1.041	3.51	0.00	4.14	11.75	4.69	4.19	15.24	24.12	0.042	15.11
5/16/2015	22.52	0.00	0.00	0.180	22.70	0.421	0.180	0.017	0.000	0.993	0.696	4.73	0.00	4.35	11.31	5.33	4.37	13.00	22.70	0.017	12.82
5/17/2015	21.82	0.00	0.00	0.151	21.97	0.613	0.151	0.025	0.000	1.448	0.704	2.95	0.00	4.68	11.40	3.71	4.70	13.56	21.97	0.025	13.40
5/18/2015	22.94	0.00	0.00	0.297	23.24	1.134	0.297	0.046	0.000	2.676	0.723	2.68	0.00	4.33	11.35	4.11	4.37	14.75	23.24	0.046	14.46
5/19/2015	24.97	0.00	0.00	0.462	25.43	1.192	0.462	0.049	0.000	2.814	0.869	4.24	0.00	4.30	11.50	5.89	4.35	15.18	25.43	0.049	14.72
5/20/2015	23.41	0.00	0.00	0.265	23.68	1.148	0.265	0.047	0.000	2.710	0.920	3.16	0.00	4.11	11.32	4.57	4.16	14.95	23.68	0.047	14.68
5/21/2015	23.90	0.00	0.00	0.157	24.06	1.144	0.157	0.047	0.000	2.700	0.979	3.43	0.00	4.53	11.07	4.73	4.58	14.75	24.06	0.047	14.59
5/22/2015	24.34	0.00	0.00	0.150	24.49	1.311	0.150	0.054	0.000	3.094	0.870	3.71	0.00	4.06	11.24	5.17	4.11	15.21	24.49	0.054	15.06
5/23/2015	22.49	0.00	0.00	0.212	22.70	1.376	0.212	0.056	0.000	3.248	0.909	3.04	0.00	3.93	9.93	4.63	3.99	14.09	22.70	0.056	13.88
5/24/2015	24.76	0.00	0.00	0.178	24.94	1.733	0.178	0.071	0.000	4.092	0.845	4.18	0.00	3.91	9.93	6.09	3.98	14.87	24.94	0.071	14.69
5/25/2015	21.11	0.00	0.00	0.174	21.28	0.990	0.174	0.040	0.000	2.338	0.823	1.94	0.00	4.46	10.52	3.10	4.50	13.68	21.28	0.040	13.51
5/26/2015	30.22	0.00	0.00	0.222	30.44	2.475	0.222	0.101	0.000	5.843	1.151	5.28	0.00	4.25	11.12	7.98	4.35	18.11	30.44	0.101	17.89
5/27/2015	25.66	0.00	0.00	0.211	25.87	1.772	0.211	0.072	0.000	4.184	0.994	3.23	0.00	4.15	11.25	5.21	4.23	16.43	25.87	0.072	16.22
5/28/2015	23.49	0.00	0.00	0.147	23.64	1.201	0.147	0.049	0.000	2.834	1.035	3.26	0.00	4.17	10.94	4.61	4.22	14.81	23.64	0.049	14.66
5/29/2015	26.75	0.00	0.00	0.130	26.88	2.281	0.130	0.093	0.000	5.385	1.048	3.33	0.00	4.05	10.56	5.74	4.15	16.99	26.88	0.093	16.86
5/30/2015	27.89	0.00	0.00	0.162	28.05	2.488	0.162	0.102	0.000	5.873	1.227	3.93	0.00	4.20	10.07	6.58	4.30	17.17	28.05	0.102	17.01
5/31/2015	28.20	0.00	0.00	0.157	28.36	2.438	0.157	0.100	0.000	5.755	1.177	3.69	0.00	4.47	10.57	6.28	4.57	17.50	28.36	0.100	17.34
6/1/2015	24.20	0.00	0.00	0.301	24.50	1.313	0.301	0.054	0.000	3.100	1.004	3.77	0.00	4.28	10.67	5.38	4.34	14.78	24.50	0.054	14.48
6/2/2015	21.96	0.00	0.00	0.206	22.17	0.673	0.206	0.027	0.000	1.589	0.962	2.75	0.00	4.26	11.70	3.63	4.28	14.25	22.17	0.027	14.05
6/3/2015	19.59	0.00	0.00	0.240	19.83	0.245	0.240	0.010	0.000	0.578	0.914	3.17	0.00	3.85	10.82	3.65	3.86	12.31	19.83	0.010	12.07
6/4/2015	23.56	0.00	0.00	0.188	23.75	0.531	0.188	0.022	0.000	1.253	0.807	5.76	0.00	4.00	11.19	6.48	4.02	13.25	23.75	0.022	13.06
6/5/2015	21.37	0.00	0.00	0.195	21.57	0.964	0.195	0.039	0.000	2.275	0.745	2.54	0.00	3.91	10.90	3.70	3.95	13.92	21.57	0.039	13.72
6/6/2015	25.48	0.00	0.00	0.188	25.67	1.862	0.188	0.076	0.000	4.396	0.890	3.51	0.00	4.09	10.66	5.56	4.16	15.94	25.67	0.076	15.76
6/7/2015	26.18	0.00	0.00	0.210	26.39	1.804	0.210	0.074	0.000	4.257	0.902	4.26	0.00	4.19	10.69	6.27	4.26	15.85	26.39	0.074	15.64
6/8/2015	22.58	0.00	0.00	0.322	22.90	0.960	0.322	0.039	0.000	2.266	0.930	3.41	0.00	4.20	10.78	4.69	4.24	13.97	22.90	0.039	13.65
6/9/2015	24.58	0.00	0.00	0.200	24.78	0.922	0.200	0.038	0.000	2.175	0.915	3.57	0.00	5.33	11.63	4.69	5.36	14.72	24.78	0.038	14.52
6/10/2015	25.73	0.00	0.00	0.314	26.04	0.969	0.314	0.040	0.000	2.287	1.299	5.13	0.00	4.35	11.65	6.41	4.39	15.24	26.04	0.040	14.92
6/11/2015	25.68	0.00	0.00	0.168	25.85	1.777	0.168	0.073	0.000	4.196	1.452	3.18	0.00	4.06	10.94	5.13	4.14	16.59	25.85	0.073	16.42
6/12/2015	26.97	0.00	0.00	0.306	27.28	2.094	0.306	0.085	0.000	4.942	1.079	4.10	0.00	4.09	10.58	6.50	4.18	16.60	27.28	0.085	16.29
6/13/2015	28.30	0.00	0.00	0.295	28.60	2.653	0.295	0.108	0.000	6.263	1.151	4.09	0.00	4.09	9.94	7.04	4.20	17.35	28.60	0.108	17.06
6/14/2015	27.51	0.00	0.00	0.167	27.68	2.698	0.167	0.110	0.000	6.368	1.055	2.65	0.00	4.24	10.39	5.51	4.35	17.81	27.68	0.110	17.64
6/15/2015	28.35	0.00	0.00	0.390	28.74	2.229	0.390	0.091	0.000	5.262	1.081	5.32	0.00	4.13	10.25	7.94	4.22	16.59	28.74	0.091	16.20

APPENDIX B – DAILY IBT AMOUNTS

	(1)	(2)	(3)	(4)	(5)=1+2 +3+4	(6)	(7)	(8)	(9)	(10)	(11)	(12)	(13)	(14)	(15)	(16)=6+7+1 2+13	(17)=8+9+ 14	(18)=10+ 11+15	(19)=16+1 7+18	(20)=8+9	(21)=18- 2-3-4
	Water Withdrawal/Purchase (mgd)				Consumptive Use (mgd)							Water Use Discharged as Wastewater (mgd)				Total Returned/Used in Each Basin (mgd)				Interbasin Transfer (mgd)	
	Jordan Lake Withdrawal	Neuse Basin Purchase			Total System Use	Haw		Cape Fear		Neuse		Haw		Cape Fear	Neuse	Haw	Cape Fear	Neuse	Total for All Basins	Haw to Cape Fear	Haw to Neuse
	Haw	Raleigh	Durham	Durham Co. Reclaimed		Potable	WRF Reuse	Potable	WRF Reuse	Potable	WRF Reuse	WTP Process Water	WRF	WRF	Total WRFs						
6/16/2015	29.54	0.00	0.00	0.212	29.75	2.622	0.212	0.107	0.000	6.188	1.334	5.29	0.00	3.93	10.07	8.12	4.04	17.59	29.75	0.107	17.38
6/17/2015	30.72	0.00	0.00	0.389	31.11	3.068	0.389	0.125	0.000	7.242	1.185	4.19	0.00	4.08	10.83	7.65	4.21	19.25	31.11	0.125	18.86
6/18/2015	28.06	0.00	0.00	0.161	28.22	1.660	0.161	0.068	0.000	3.918	1.033	4.88	0.00	4.45	12.05	6.70	4.51	17.01	28.22	0.068	16.84
6/19/2015	23.93	0.00	0.00	0.262	24.19	0.416	0.262	0.017	0.000	0.983	0.802	3.34	0.00	4.42	13.96	4.02	4.43	15.74	24.19	0.017	15.48
6/20/2015	24.89	0.00	0.00	0.293	25.18	1.299	0.293	0.053	0.000	3.065	1.022	4.30	0.00	4.16	10.99	5.89	4.21	15.08	25.18	0.053	14.79
6/21/2015	25.29	0.00	0.00	0.206	25.50	1.643	0.206	0.067	0.000	3.879	0.912	3.90	0.00	4.27	10.62	5.75	4.34	15.41	25.50	0.067	15.20
6/22/2015	22.58	0.00	0.00	0.381	22.96	1.085	0.381	0.044	0.000	2.562	0.952	3.03	0.00	4.11	10.80	4.50	4.15	14.32	22.96	0.044	13.93
6/23/2015	29.76	0.00	0.00	0.310	30.07	2.635	0.310	0.108	0.000	6.219	1.222	5.00	0.00	3.99	10.59	7.94	4.09	18.03	30.07	0.108	17.72
6/24/2015	28.57	0.00	0.00	0.433	29.00	2.592	0.433	0.106	0.000	6.118	1.095	3.79	0.00	4.01	10.86	6.81	4.12	18.07	29.00	0.106	17.64
6/25/2015	26.87	0.00	0.00	0.211	27.08	1.834	0.211	0.075	0.000	4.329	1.141	4.19	0.00	4.22	11.08	6.24	4.30	16.55	27.08	0.075	16.34
6/26/2015	25.52	0.00	0.00	0.207	25.73	1.469	0.207	0.060	0.000	3.467	1.030	4.19	0.00	4.17	11.13	5.87	4.23	15.63	25.73	0.060	15.42
6/27/2015	22.15	0.00	0.00	0.192	22.34	0.275	0.192	0.011	0.000	0.649	0.939	3.64	0.00	4.56	12.07	4.11	4.58	13.66	22.34	0.011	13.47
6/28/2015	21.31	0.00	0.00	0.182	21.49	0.263	0.182	0.011	0.000	0.620	0.839	3.63	0.00	4.58	11.36	4.07	4.59	12.82	21.49	0.011	12.64
6/29/2015	23.86	0.00	0.00	0.303	24.16	1.006	0.303	0.041	0.000	2.375	0.893	4.31	0.00	4.27	10.96	5.62	4.32	14.23	24.16	0.041	13.92
6/30/2015	26.25	0.00	0.00	0.309	26.56	1.766	0.309	0.072	0.000	4.168	1.156	4.29	0.00	4.21	10.59	6.36	4.28	15.91	26.56	0.072	15.60
7/1/2015	25.38	0.00	0.00	0.415	25.80	1.769	0.415	0.072	0.000	4.177	0.911	3.50	0.00	3.87	11.08	5.68	3.94	16.17	25.80	0.072	15.75
7/2/2015	24.76	0.00	0.00	0.302	25.06	1.336	0.302	0.055	0.000	3.155	1.006	4.39	0.00	4.14	10.68	6.03	4.19	14.84	25.06	0.055	14.54
7/3/2015	24.24	0.00	0.00	0.222	24.46	1.305	0.222	0.053	0.000	3.079	0.559	4.28	0.00	4.05	10.91	5.81	4.10	14.55	24.46	0.053	14.33
7/4/2015	17.62	0.00	0.00	0.304	17.92	0.222	0.304	0.009	0.000	0.524	0.922	2.81	0.00	3.61	9.53	3.34	3.62	10.97	17.92	0.009	10.67
7/5/2015	23.75	0.00	0.00	0.248	24.00	1.015	0.248	0.041	0.000	2.397	0.813	4.64	0.00	4.13	10.71	5.90	4.17	13.92	24.00	0.041	13.67
7/6/2015	19.78	0.00	0.00	0.446	20.23	0.262	0.446	0.011	0.000	0.619	0.719	2.40	0.00	4.38	11.39	3.11	4.39	12.73	20.23	0.011	12.28
7/7/2015	19.38	0.00	0.00	0.323	19.70	1.505	0.323	0.061	0.000	3.553	1.025	-1.57	0.00	3.98	10.82	0.26	4.04	15.40	19.70	0.061	15.08
7/8/2015	26.67	0.00	0.00	0.397	27.07	1.481	0.397	0.060	0.000	3.495	0.916	5.01	0.00	4.20	11.50	6.89	4.26	15.92	27.07	0.060	15.52
7/9/2015	23.55	0.00	0.00	0.371	23.92	1.126	0.371	0.046	0.000	2.658	0.848	3.54	0.00	4.23	11.10	5.04	4.27	14.61	23.92	0.046	14.24
7/10/2015	24.34	0.00	0.00	0.413	24.75	1.293	0.413	0.053	0.000	3.053	0.910	4.29	0.00	4.11	10.63	6.00	4.17	14.59	24.75	0.053	14.18
7/11/2015	25.81	0.00	0.00	0.332	26.14	1.912	0.332	0.078	0.000	4.514	1.052	3.84	0.00	4.19	10.22	6.08	4.27	15.79	26.14	0.078	15.45
7/12/2015	26.45	0.00	0.00	0.264	26.71	2.006	0.264	0.082	0.000	4.736	0.972	3.91	0.00	4.36	10.38	6.18	4.44	16.09	26.71	0.082	15.83
7/13/2015	22.92	0.00	0.00	0.229	23.15	0.282	0.229	0.012	0.000	0.666	0.820	3.95	0.00	4.50	12.69	4.46	4.51	14.17	23.15	0.012	13.95
7/14/2015	22.75	0.00	0.00	0.248	23.00	0.279	0.248	0.011	0.000	0.659	0.835	4.00	0.00	5.27	11.69	4.53	5.29	13.18	23.00	0.011	12.94
7/15/2015	22.76	0.00	0.00	0.380	23.14	0.888	0.380	0.036	0.000	2.095	0.854	3.31	0.00	4.04	11.54	4.58	4.08	14.48	23.14	0.036	14.10
7/16/2015	25.37	0.00	0.00	0.316	25.69	1.489	0.316	0.061	0.000	3.514	1.036	4.06	0.00	4.48	10.73	5.86	4.54	15.28	25.69	0.061	14.97
7/17/2015	24.96	0.00	0.00	0.496	25.46	1.723	0.496	0.070	0.000	4.066	0.944	3.65	0.00	3.95	10.56	5.87	4.02	15.57	25.46	0.070	15.08
7/18/2015	25.40	0.00	0.00	0.455	25.86	1.458	0.455	0.059	0.000	3.441	1.020	4.99	0.00	4.09	10.34	6.90	4.15	14.80	25.86	0.059	14.35
7/19/2015	24.23	0.00	0.00	0.264	24.49	1.315	0.264	0.054	0.000	3.104	0.823	3.62	0.00	4.38	10.93	5.20	4.44	14.86	24.49	0.054	14.59
7/20/2015	21.83	0.00	0.00	0.502	22.33	0.896	0.502	0.037	0.000	2.115	0.769	3.28	0.00	4.04	10.69	4.68	4.08	13.58	22.33	0.037	13.07
7/21/2015	28.81	0.00	0.00	0.389	29.20	2.505	0.389	0.102	0.000	5.913	1.015	4.28	0.00	4.08	10.91	7.17	4.19	17.84	29.20	0.102	17.45
7/22/2015	24.50	0.00	0.00	0.446	24.95	1.543	0.446	0.063	0.000	3.643	0.812	3.86	0.00	3.87	10.71	5.85	3.93	15.16	24.95	0.063	14.72
7/23/2015	24.90	0.00	0.00	0.253	25.15	1.218	0.253	0.050	0.000	2.876	0.959	4.10	0.00	4.34	11.36	5.57	4.39	15.19	25.15	0.050	14.94
7/24/2015	23.95	0.00	0.00	0.282	24.23	1.452	0.282	0.059	0.000	3.427	0.973	3.62	0.00	4.08	10.34	5.35	4.14	14.74	24.23	0.059	14.46
7/25/2015	23.61	0.00	0.00	0.247	23.86	1.440	0.247	0.059	0.000	3.399	0.851	3.77	0.00	4.08	10.01	5.46	4.14	14.26	23.86	0.059	14.02
7/26/2015	25.04	0.00	0.00	0.271	25.31	1.745	0.271	0.071	0.000	4.120	0.866	3.41	0.00	4.26	10.57	5.43	4.33	15.55	25.31	0.071	15.28
7/27/2015	22.36	0.00	0.00	0.384	22.74	0.976	0.384	0.040	0.000	2.304	0.850	3.44	0.00	4.13	10.62	4.80	4.17	13.77	22.74	0.040	13.39

APPENDIX B – DAILY IBT AMOUNTS

	(1)	(2)	(3)	(4)	(5)=1+2 +3+4	(6)	(7)	(8)	(9)	(10)	(11)	(12)	(13)	(14)	(15)	(16)=6+7+1 2+13	(17)=8+9+ 14	(18)=10+ 11+15	(19)=16+1 7+18	(20)=8+9	(21)=18- 2-3-4
	Water Withdrawal/Purchase (mgd)				Consumptive Use (mgd)							Water Use Discharged as Wastewater (mgd)				Total Returned/Used in Each Basin (mgd)				Interbasin Transfer (mgd)	
	Jordan Lake Withdrawal	Neuse Basin Purchase			Total System Use	Haw		Cape Fear		Neuse		Haw		Cape Fear	Neuse	Haw	Cape Fear	Neuse	Total for All Basins	Haw to Cape Fear	Haw to Neuse
	Haw	Raleigh	Durham	Durham Co. Reclaimed		Potable	WRF Reuse	Potable	WRF Reuse	Potable	WRF Reuse	WTP Process Water	WRF	WRF	Total WRFs						
7/28/2015	27.36	0.00	0.00	0.389	27.75	2.085	0.389	0.085	0.000	4.921	0.933	4.72	0.00	4.00	10.61	7.19	4.09	16.47	27.75	0.085	16.08
7/29/2015	26.89	0.00	0.00	0.443	27.33	2.143	0.443	0.087	0.000	5.058	0.998	3.98	0.00	3.97	10.65	6.57	4.06	16.71	27.33	0.087	16.27
7/30/2015	27.57	0.00	0.00	0.438	28.01	2.535	0.438	0.103	0.000	5.983	1.109	3.79	0.00	4.04	10.01	6.76	4.15	17.10	28.01	0.103	16.66
7/31/2015	27.10	0.00	0.00	0.387	27.49	2.062	0.387	0.084	0.000	4.867	1.051	4.97	0.00	3.93	10.13	7.42	4.02	16.05	27.49	0.084	15.67
8/1/2015	26.68	0.00	0.00	0.388	27.07	2.613	0.388	0.107	0.000	6.167	1.121	3.18	0.00	3.97	9.53	6.18	4.07	16.81	27.07	0.107	16.43
8/2/2015	28.11	0.00	0.00	0.389	28.50	2.727	0.389	0.111	0.000	6.437	1.021	3.74	0.00	4.18	9.89	6.86	4.30	17.35	28.50	0.111	16.96
8/3/2015	26.64	0.00	0.00	0.513	27.15	2.063	0.513	0.084	0.000	4.869	0.959	4.43	0.00	4.04	10.19	7.01	4.13	16.02	27.15	0.084	15.51
8/4/2015	28.53	0.00	0.00	0.540	29.07	2.798	0.540	0.114	0.000	6.604	1.089	4.00	0.00	3.89	10.04	7.34	4.00	17.73	29.07	0.114	17.19
8/5/2015	29.98	0.00	0.00	0.539	30.52	2.966	0.539	0.121	0.000	7.001	0.940	4.70	0.00	3.93	10.32	8.20	4.05	18.26	30.52	0.121	17.72
8/6/2015	28.35	0.00	0.00	0.195	28.55	2.530	0.195	0.103	0.000	5.973	1.044	4.65	0.00	3.91	10.14	7.38	4.01	17.16	28.55	0.103	16.97
8/7/2015	23.86	0.00	0.00	0.189	24.05	1.487	0.189	0.061	0.000	3.509	0.824	3.46	0.00	4.01	10.51	5.14	4.07	14.84	24.05	0.061	14.66
8/8/2015	23.94	0.00	0.00	0.341	24.28	1.409	0.341	0.058	0.000	3.327	0.931	4.47	0.00	3.95	9.79	6.22	4.01	14.05	24.28	0.058	13.71
8/9/2015	25.51	0.00	0.00	0.347	25.86	2.135	0.347	0.087	0.000	5.039	1.000	3.24	0.00	4.04	9.97	5.72	4.13	16.01	25.86	0.087	15.66
8/10/2015	22.82	0.00	0.00	0.378	23.20	1.193	0.378	0.049	0.000	2.815	0.777	3.89	0.00	3.90	10.20	5.46	3.94	13.79	23.20	0.049	13.42
8/11/2015	27.07	0.00	0.00	0.143	27.21	1.980	0.143	0.081	0.000	4.674	0.983	4.32	0.00	4.05	10.98	6.44	4.13	16.64	27.21	0.081	16.49
8/12/2015	23.66	0.00	0.00	0.349	24.01	0.911	0.349	0.037	0.000	2.150	0.773	4.62	0.00	3.98	11.19	5.88	4.02	14.11	24.01	0.037	13.76
8/13/2015	26.49	0.00	0.00	0.396	26.89	2.400	0.396	0.098	0.000	5.666	0.966	3.36	0.00	3.89	10.11	6.16	3.99	16.74	26.89	0.098	16.35
8/14/2015	27.00	0.00	0.00	0.396	27.40	2.039	0.396	0.083	0.000	4.814	0.744	4.88	0.00	4.31	10.13	7.32	4.39	15.69	27.40	0.083	15.29
8/15/2015	25.24	0.00	0.00	0.471	25.71	2.309	0.471	0.094	0.000	5.450	0.860	2.82	0.00	4.34	9.37	5.60	4.44	15.68	25.71	0.094	15.21
8/16/2015	27.92	0.00	0.00	0.340	28.26	2.686	0.340	0.110	0.000	6.341	0.912	3.67	0.00	4.19	10.01	6.70	4.30	17.26	28.26	0.110	16.92
8/17/2015	24.65	0.00	0.00	0.502	25.15	1.344	0.502	0.055	0.000	3.173	0.958	5.11	0.00	3.97	10.04	6.96	4.02	14.17	25.15	0.055	13.67
8/18/2015	27.23	0.00	0.00	0.359	27.59	2.304	0.359	0.094	0.000	5.439	0.814	4.21	0.00	3.88	10.49	6.87	3.98	16.74	27.59	0.094	16.38
8/19/2015	23.66	0.00	0.00	0.409	24.07	0.991	0.409	0.040	0.002	2.340	0.563	3.57	0.00	4.54	11.61	4.97	4.59	14.51	24.07	0.042	14.10
8/20/2015	23.87	0.00	0.00	0.286	24.16	1.161	0.286	0.047	0.000	2.740	0.585	4.20	0.00	4.19	10.95	5.65	4.24	14.27	24.16	0.047	13.99
8/21/2015	23.56	0.00	0.00	0.534	24.09	1.486	0.534	0.061	0.000	3.507	0.565	3.53	0.00	4.00	10.41	5.55	4.06	14.48	24.09	0.061	13.95
8/22/2015	26.26	0.00	0.00	0.422	26.68	2.133	0.422	0.087	0.000	5.034	0.697	4.35	0.00	4.14	9.81	6.90	4.23	15.55	26.68	0.087	15.12
8/23/2015	24.85	0.00	0.00	0.272	25.12	1.597	0.272	0.065	0.000	3.770	0.670	3.92	0.00	4.44	10.39	5.79	4.50	14.83	25.12	0.065	14.56
8/24/2015	25.31	0.00	0.00	0.494	25.80	1.419	0.494	0.058	0.000	3.349	0.544	4.55	0.00	4.35	11.04	6.46	4.41	14.93	25.80	0.058	14.44
8/25/2015	22.78	0.00	0.00	0.510	23.29	1.226	0.510	0.050	0.000	2.894	0.760	3.42	0.00	4.00	10.43	5.16	4.05	14.09	23.29	0.050	13.58
8/26/2015	24.84	0.00	0.00	0.417	25.26	1.743	0.417	0.071	0.000	4.114	0.640	3.73	0.00	3.80	10.74	5.89	3.87	15.50	25.26	0.071	15.08
8/27/2015	26.29	0.00	0.00	0.432	26.72	2.238	0.432	0.091	0.000	5.283	0.779	3.96	0.00	3.77	10.17	6.63	3.86	16.23	26.72	0.091	15.80
8/28/2015	27.51	0.00	0.00	0.427	27.94	2.305	0.427	0.094	0.000	5.441	0.659	5.12	0.00	3.72	10.18	7.85	3.81	16.28	27.94	0.094	15.85
8/29/2015	24.96	0.00	0.00	0.416	25.38	1.856	0.416	0.076	0.000	4.381	0.773	4.04	0.00	4.00	9.84	6.31	4.08	14.99	25.38	0.076	14.57
8/30/2015	27.70	0.00	0.00	0.495	28.20	2.536	0.495	0.104	0.000	5.987	0.678	3.79	0.00	4.40	10.20	6.82	4.50	16.87	28.20	0.104	16.37
8/31/2015	20.15	0.00	0.00	0.174	20.32	0.254	0.174	0.010	0.000	0.600	0.483	3.02	0.00	4.60	11.18	3.45	4.61	12.26	20.32	0.010	12.09
9/1/2015	23.50	0.00	0.00	0.315	23.82	1.076	0.315	0.044	0.000	2.541	0.572	4.00	0.00	4.28	10.99	5.39	4.33	14.10	23.82	0.044	13.78
9/2/2015	23.66	0.00	0.00	0.371	24.03	1.292	0.371	0.053	0.000	3.049	0.584	3.58	0.00	4.23	10.88	5.24	4.28	14.51	24.03	0.053	14.14
9/3/2015	23.04	0.00	0.00	0.400	23.44	1.054	0.400	0.043	0.000	2.489	0.596	3.80	0.00	4.24	10.82	5.25	4.28	13.91	23.44	0.043	13.51
9/4/2015	23.25	0.00	0.00	0.439	23.69	1.299	0.439	0.053	0.000	3.066	0.577	3.72	0.00	4.14	10.39	5.46	4.20	14.03	23.69	0.053	13.59
9/5/2015	24.10	0.00	0.00	0.376	24.48	1.518	0.376	0.062	0.000	3.584	0.680	4.51	0.00	4.02	9.73	6.40	4.08	13.99	24.48	0.062	13.61
9/6/2015	21.96	0.00	0.00	0.282	22.24	1.197	0.282	0.049	0.000	2.825	0.588	3.93	0.00	3.86	9.51	5.41	3.91	12.93	22.24	0.049	12.64
9/7/2015	21.54	0.00	0.00	0.454	21.99	1.103	0.454	0.045	0.000	2.603	0.503	2.68	0.00	4.40	10.20	4.24	4.45	13.31	21.99	0.045	12.85

APPENDIX B – DAILY IBT AMOUNTS

	(1)	(2)	(3)	(4)	(5)=1+2 +3+4	(6)	(7)	(8)	(9)	(10)	(11)	(12)	(13)	(14)	(15)	(16)=6+7+1 2+13	(17)=8+9+ 14	(18)=10+ 11+15	(19)=16+1 7+18	(20)=8+9	(21)=18- 2-3-4
	Water Withdrawal/Purchase (mgd)				Consumptive Use (mgd)							Water Use Discharged as Wastewater (mgd)				Total Returned/Used in Each Basin (mgd)				Interbasin Transfer (mgd)	
	Jordan Lake Withdrawal	Neuse Basin Purchase			Total System Use	Haw		Cape Fear		Neuse		Haw		Cape Fear	Neuse	Haw	Cape Fear	Neuse	Total for All Basins	Haw to Cape Fear	Haw to Neuse
	Haw	Raleigh	Durham	Durham Co. Reclaimed		Potable	WRF Reuse	Potable	WRF Reuse	Potable	WRF Reuse	WTP Process Water	WRF	WRF	Total WRFs						
9/8/2015	24.53	0.00	0.00	0.319	24.85	1.342	0.319	0.055	0.000	3.169	0.717	4.26	0.00	4.26	10.73	5.92	4.31	14.61	24.85	0.055	14.29
9/9/2015	27.06	0.00	0.00	0.339	27.40	2.091	0.339	0.085	0.000	4.935	0.598	4.30	0.00	4.22	10.83	6.73	4.31	16.36	27.40	0.085	16.02
9/10/2015	18.56	0.00	0.00	0.290	18.85	0.226	0.290	0.009	0.000	0.533	0.603	3.48	0.00	3.83	9.88	3.99	3.84	11.02	18.85	0.009	10.73
9/11/2015	22.02	0.00	0.00	0.417	22.43	1.005	0.417	0.041	0.000	2.373	0.566	3.66	0.00	4.03	10.33	5.09	4.07	13.27	22.43	0.041	12.86
9/12/2015	23.10	0.00	0.00	0.229	23.33	1.284	0.229	0.052	0.000	3.031	0.641	3.52	0.00	4.30	10.26	5.04	4.35	13.94	23.33	0.052	13.71
9/13/2015	21.98	0.00	0.00	0.211	22.19	1.075	0.211	0.044	0.000	2.538	0.544	3.09	0.00	4.49	10.21	4.38	4.53	13.29	22.19	0.044	13.08
9/14/2015	23.34	0.00	0.00	0.383	23.72	1.359	0.383	0.055	0.000	3.208	0.516	3.81	0.00	4.11	10.28	5.55	4.17	14.00	23.72	0.055	13.62
9/15/2015	23.66	0.00	0.00	0.342	24.00	1.454	0.342	0.059	0.000	3.433	0.664	3.95	0.00	3.93	10.16	5.75	3.99	14.26	24.00	0.059	13.92
9/16/2015	24.15	0.00	0.00	0.351	24.50	1.570	0.351	0.064	0.000	3.706	0.660	3.82	0.00	4.01	10.32	5.74	4.08	14.68	24.50	0.064	14.33
9/17/2015	25.46	0.00	0.00	0.337	25.80	1.948	0.337	0.080	0.000	4.598	0.746	4.16	0.00	4.00	9.93	6.44	4.08	15.27	25.80	0.080	14.94
9/18/2015	25.55	0.00	0.00	0.420	25.97	2.417	0.420	0.099	0.000	5.705	0.636	2.83	0.00	3.91	9.95	5.67	4.01	16.29	25.97	0.099	15.87
9/19/2015	28.51	0.00	0.00	0.316	28.83	2.533	0.316	0.103	0.000	5.979	0.736	4.90	0.00	4.18	10.09	7.75	4.28	16.80	28.83	0.103	16.48
9/20/2015	23.19	0.00	0.00	0.349	23.54	1.561	0.349	0.064	0.000	3.685	0.680	2.68	0.00	4.37	10.15	4.59	4.44	14.52	23.54	0.064	14.17
9/21/2015	22.84	0.00	0.00	0.358	23.20	1.289	0.358	0.053	0.000	3.043	0.626	3.30	0.00	4.11	10.42	4.95	4.16	14.09	23.20	0.053	13.73
9/22/2015	25.07	0.00	0.00	0.333	25.40	1.599	0.333	0.065	0.000	3.774	0.761	4.88	0.00	3.91	10.09	6.81	3.97	14.62	25.40	0.065	14.29
9/23/2015	26.45	0.00	0.00	0.481	26.93	2.560	0.481	0.104	0.000	6.042	0.675	2.79	0.00	3.99	10.28	5.84	4.09	17.00	26.93	0.104	16.52
9/24/2015	23.87	0.00	0.00	0.261	24.13	1.411	0.261	0.058	0.000	3.331	0.702	4.03	0.00	3.99	10.34	5.70	4.04	14.38	24.13	0.058	14.12
9/25/2015	20.69	0.00	0.00	0.238	20.93	0.257	0.238	0.010	0.000	0.606	0.462	3.46	0.00	4.19	11.71	3.96	4.20	12.77	20.93	0.010	12.54
9/26/2015	16.63	0.00	0.00	0.244	16.88	0.214	0.244	0.009	0.000	0.505	0.548	2.32	0.00	3.53	9.51	2.77	3.54	10.57	16.88	0.009	10.32
9/27/2015	21.13	0.00	0.00	0.220	21.35	0.253	0.220	0.010	0.000	0.597	0.424	4.14	0.00	4.53	11.18	4.61	4.54	12.20	21.35	0.010	11.98
9/28/2015	22.35	0.00	0.00	0.190	22.54	0.349	0.190	0.014	0.000	0.823	0.426	3.95	0.00	4.61	12.18	4.49	4.62	13.43	22.54	0.014	13.24
9/29/2015	22.16	0.00	0.00	0.158	22.32	0.273	0.158	0.011	0.000	0.644	0.505	3.75	0.00	4.43	12.54	4.18	4.45	13.69	22.32	0.011	13.53
9/30/2015	22.17	0.00	0.00	0.200	22.37	0.481	0.200	0.020	0.000	1.135	0.410	3.16	0.00	4.60	12.37	3.84	4.62	13.91	22.37	0.020	13.71
10/1/2015	22.17	0.00	0.00	0.113	22.28	0.228	0.113	0.009	0.000	0.538	0.459	6.79	0.00	3.91	10.23	7.13	3.92	11.23	22.28	0.009	11.12
10/2/2015	20.27	0.00	0.00	0.139	20.41	0.243	0.139	0.010	0.000	0.575	0.361	3.85	0.00	3.90	11.33	4.23	3.91	12.27	20.41	0.010	12.13
10/3/2015	19.20	0.00	0.00	0.123	19.32	0.238	0.123	0.010	0.000	0.561	0.445	3.16	0.00	3.67	11.12	3.52	3.68	12.13	19.32	0.010	12.00
10/4/2015	18.48	0.00	0.00	0.116	18.60	0.223	0.116	0.009	0.000	0.527	0.363	3.41	0.00	3.90	10.05	3.75	3.91	10.94	18.60	0.009	10.83
10/5/2015	20.28	0.00	0.00	0.154	20.43	0.246	0.154	0.010	0.000	0.581	0.344	3.68	0.00	4.23	11.18	4.08	4.24	12.11	20.43	0.010	11.96
10/6/2015	23.69	0.00	0.00	0.215	23.91	0.523	0.215	0.021	0.000	1.234	0.484	4.43	0.00	4.75	12.25	5.17	4.77	13.97	23.91	0.021	13.75
10/7/2015	19.34	0.00	0.00	0.267	19.61	0.238	0.267	0.010	0.000	0.561	0.449	3.43	0.00	4.07	10.58	3.93	4.08	11.59	19.61	0.010	11.33
10/8/2015	24.81	0.00	0.00	0.219	25.03	0.989	0.219	0.040	0.000	2.336	0.512	4.86	0.00	4.55	11.52	6.07	4.59	14.37	25.03	0.040	14.15
10/9/2015	21.98	0.00	0.00	0.247	22.23	1.009	0.247	0.041	0.000	2.382	0.482	3.80	0.00	2.98	11.29	5.06	3.02	14.15	22.23	0.041	13.90
10/10/2015	21.84	0.00	0.00	0.136	21.98	0.240	0.136	0.010	0.000	0.567	0.437	5.64	0.00	4.97	9.98	6.02	4.98	10.98	21.98	0.010	10.85
10/11/2015	23.93	0.00	0.00	0.160	24.09	0.625	0.160	0.025	0.000	1.475	0.361	5.33	0.00	4.61	11.50	6.11	4.64	13.34	24.09	0.025	13.18
10/12/2015	22.47	0.00	0.00	0.322	22.79	0.584	0.322	0.024	0.000	1.379	0.398	4.21	0.00	4.34	11.53	5.12	4.37	13.31	22.79	0.024	12.99
10/13/2015	22.91	0.00	0.00	0.212	23.12	1.079	0.212	0.044	0.000	2.547	0.554	4.37	0.00	2.84	11.48	5.66	2.88	14.58	23.12	0.044	14.37
10/14/2015	24.77	0.00	0.00	0.287	25.06	0.808	0.287	0.033	0.000	1.908	0.463	4.38	0.00	5.86	11.32	5.48	5.90	13.69	25.06	0.033	13.40
10/15/2015	22.79	0.00	0.00	0.306	23.10	1.009	0.306	0.041	0.000	2.381	0.523	4.08	0.00	4.24	10.51	5.39	4.28	13.42	23.10	0.041	13.11
10/16/2015	24.61	0.00	0.00	0.261	24.87	1.240	0.261	0.051	0.000	2.927	0.473	4.84	0.00	4.13	10.95	6.34	4.18	14.35	24.87	0.051	14.09
10/17/2015	20.56	0.00	0.00	0.219	20.78	0.607	0.219	0.025	0.000	1.433	0.605	3.06	0.00	4.38	10.45	3.89	4.40	12.49	20.78	0.025	12.27
10/18/2015	24.86	0.00	0.00	0.179	25.04	1.313	0.179	0.054	0.000	3.100	0.455	4.75	0.00	4.57	10.62	6.24	4.62	14.18	25.04	0.054	14.00
10/19/2015	22.16	0.00	0.00	0.319	22.48	0.954	0.319	0.039	0.000	2.252	0.407	3.35	0.00	4.36	10.80	4.62	4.40	13.46	22.48	0.039	13.14

APPENDIX B – DAILY IBT AMOUNTS

	(1)	(2)	(3)	(4)	(5)=1+2 +3+4	(6)	(7)	(8)	(9)	(10)	(11)	(12)	(13)	(14)	(15)	(16)=6+7+1 2+13	(17)=8+9+ 14	(18)=10+ 11+15	(19)=16+1 7+18	(20)=8+9	(21)=18- 2-3-4
	Water Withdrawal/Purchase (mgd)				Consumptive Use (mgd)							Water Use Discharged as Wastewater (mgd)				Total Returned/Used in Each Basin (mgd)				Interbasin Transfer (mgd)	
	Jordan Lake Withdrawal	Neuse Basin Purchase			Total System Use	Haw		Cape Fear		Neuse		Haw		Cape Fear	Neuse	Haw	Cape Fear	Neuse	Total for All Basins	Haw to Cape Fear	Haw to Neuse
	Haw	Raleigh	Durham	Durham Co. Reclaimed		Potable	WRF Reuse	Potable	WRF Reuse	Potable	WRF Reuse	WTP Process Water	WRF	WRF	Total WRFs						
10/20/2015	21.76	0.00	0.00	0.244	22.00	0.568	0.244	0.023	0.000	1.340	0.558	4.27	0.00	4.27	10.73	5.08	4.29	12.63	22.00	0.023	12.38
10/21/2015	25.17	0.00	0.00	0.268	25.44	1.766	0.268	0.072	0.000	4.168	0.500	3.75	0.00	4.17	10.75	5.78	4.24	15.42	25.44	0.072	15.15
10/22/2015	24.21	0.00	0.00	0.240	24.45	1.570	0.240	0.064	0.000	3.707	0.610	4.37	0.00	4.21	9.68	6.18	4.27	14.00	24.45	0.064	13.76
10/23/2015	23.03	0.00	0.00	0.199	23.23	1.797	0.199	0.073	0.000	4.242	0.475	3.66	0.00	4.08	8.71	5.66	4.15	13.42	23.23	0.073	13.22
10/24/2015	22.96	0.00	0.00	0.215	23.18	0.782	0.215	0.032	0.000	1.846	0.528	3.92	0.00	4.22	11.63	4.92	4.25	14.00	23.18	0.032	13.79
10/25/2015	22.39	0.00	0.00	0.164	22.55	0.428	0.164	0.017	0.000	1.011	0.478	3.10	0.00	4.49	12.87	3.69	4.51	14.36	22.55	0.017	14.19
10/26/2015	21.91	0.00	0.00	0.213	22.12	0.667	0.213	0.027	0.000	1.575	0.393	3.53	0.00	4.33	11.39	4.41	4.36	13.35	22.12	0.027	13.14
10/27/2015	22.85	0.00	0.00	0.133	22.98	0.634	0.133	0.026	0.000	1.497	0.520	4.66	0.00	4.26	11.25	5.43	4.29	13.27	22.98	0.026	13.13
10/28/2015	19.99	0.00	0.00	0.156	20.15	0.239	0.156	0.010	0.000	0.565	0.321	3.87	0.00	4.12	10.87	4.27	4.13	11.75	20.15	0.010	11.60
10/29/2015	21.51	0.00	0.00	0.155	21.67	0.296	0.155	0.012	0.000	0.700	0.392	3.84	0.00	4.66	11.61	4.29	4.67	12.71	21.67	0.012	12.55
10/30/2015	20.21	0.00	0.00	0.143	20.35	0.435	0.143	0.018	0.000	1.026	0.331	3.08	0.00	4.37	10.95	3.66	4.39	12.31	20.35	0.018	12.17
10/31/2015	20.76	0.00	0.00	0.158	20.92	0.276	0.158	0.011	0.000	0.652	0.395	4.29	0.00	4.49	10.64	4.72	4.50	11.69	20.92	0.011	11.53
11/1/2015	21.48	0.00	0.00	0.090	21.57	0.263	0.090	0.011	0.000	0.620	0.411	3.70	0.00	4.40	12.07	4.05	4.41	13.10	21.57	0.011	13.01
11/2/2015	19.89	0.00	0.00	0.117	20.01	0.236	0.117	0.010	0.000	0.558	0.305	3.92	0.00	4.74	10.12	4.27	4.75	10.98	20.01	0.010	10.86
11/3/2015	19.57	0.00	0.00	0.143	19.71	0.237	0.143	0.010	0.000	0.559	0.305	3.60	0.00	3.73	11.13	3.98	3.74	11.99	19.71	0.010	11.85
11/4/2015	20.67	0.00	0.00	0.111	20.78	0.256	0.111	0.010	0.000	0.603	0.331	3.39	0.00	4.12	11.96	3.76	4.13	12.89	20.78	0.010	12.78
11/5/2015	20.61	0.00	0.00	0.149	20.76	0.237	0.149	0.010	0.000	0.560	0.361	4.61	0.00	3.92	10.91	5.00	3.93	11.83	20.76	0.010	11.69
11/6/2015	19.54	0.00	0.17	0.102	19.81	0.251	0.102	0.010	0.000	0.592	0.296	2.75	0.00	4.45	11.35	3.10	4.46	12.24	19.81	0.010	11.97
11/7/2015	18.66	0.00	0.00	0.088	18.75	0.220	0.088	0.009	0.000	0.519	0.304	3.79	0.00	3.79	10.03	4.10	3.80	10.85	18.75	0.009	10.77
11/8/2015	21.51	0.00	0.00	0.086	21.60	0.255	0.086	0.010	0.000	0.602	0.280	4.24	0.00	4.58	11.55	4.58	4.59	12.43	21.60	0.010	12.34
11/9/2015	20.60	0.00	0.47	0.078	21.15	0.258	0.078	0.011	0.000	0.609	0.286	3.60	0.00	3.97	12.33	3.94	3.98	13.23	21.15	0.011	12.68
11/10/2015	19.83	0.00	0.00	0.078	19.91	0.235	0.078	0.010	0.000	0.554	0.282	3.93	0.00	3.56	11.26	4.24	3.57	12.10	19.91	0.010	12.02
11/11/2015	19.82	0.00	0.00	0.122	19.94	0.224	0.122	0.009	0.000	0.530	0.284	4.67	0.00	3.79	10.31	5.02	3.80	11.12	19.94	0.009	11.00
11/12/2015	21.29	0.00	0.00	0.154	21.44	0.262	0.154	0.011	0.000	0.619	0.282	3.60	0.00	4.55	11.97	4.02	4.56	12.87	21.44	0.011	12.71
11/13/2015	19.93	0.00	0.00	0.182	20.11	0.227	0.182	0.009	0.000	0.536	0.300	4.67	0.00	3.99	10.20	5.08	4.00	11.03	20.11	0.009	10.85
11/14/2015	19.81	0.00	0.00	0.120	19.93	0.234	0.120	0.010	0.000	0.552	0.286	4.03	0.00	4.37	10.33	4.38	4.38	11.17	19.93	0.010	11.05
11/15/2015	20.52	0.00	0.00	0.084	20.60	0.249	0.084	0.010	0.000	0.588	0.283	3.67	0.00	4.55	11.18	4.00	4.56	12.05	20.60	0.010	11.96
11/16/2015	17.38	0.00	0.00	0.130	17.51	0.247	0.130	0.010	0.000	0.583	0.272	0.70	0.00	4.44	11.13	1.08	4.45	11.98	17.51	0.010	11.85
11/17/2015	20.47	0.00	0.00	0.130	20.60	0.246	0.130	0.010	0.000	0.581	0.293	3.85	0.00	4.28	11.21	4.23	4.29	12.08	20.60	0.010	11.95
11/18/2015	20.42	0.00	0.00	0.103	20.52	0.242	0.103	0.010	0.000	0.571	0.262	4.08	0.00	4.14	11.12	4.42	4.15	11.95	20.52	0.010	11.85
11/19/2015	19.79	0.00	0.00	0.140	19.93	0.236	0.140	0.010	0.000	0.557	0.320	3.88	0.00	3.68	11.11	4.26	3.69	11.99	19.93	0.010	11.85
11/20/2015	18.60	0.00	0.00	0.110	18.71	0.226	0.110	0.009	0.000	0.534	0.155	3.33	0.00	3.82	10.53	3.67	3.83	11.21	18.71	0.009	11.10
11/21/2015	18.39	0.00	0.00	0.090	18.48	0.222	0.090	0.009	0.000	0.525	0.240	3.36	0.00	4.07	9.96	3.67	4.08	10.73	18.48	0.009	10.64
11/22/2015	19.83	0.00	0.00	0.073	19.90	0.230	0.073	0.009	0.000	0.542	0.245	4.29	0.00	4.17	10.34	4.59	4.18	11.13	19.90	0.009	11.05
11/23/2015	21.57	0.00	0.00	0.084	21.65	0.258	0.084	0.011	0.000	0.608	0.262	4.12	0.00	4.55	11.76	4.46	4.56	12.63	21.65	0.011	12.55
11/24/2015	18.98	0.00	0.00	0.071	19.05	0.225	0.071	0.009	0.000	0.531	0.257	3.74	0.00	4.05	10.17	4.04	4.06	10.96	19.05	0.009	10.88
11/25/2015	19.75	0.00	0.00	0.082	19.83	0.225	0.082	0.009	0.000	0.531	0.279	4.52	0.00	4.07	10.12	4.83	4.08	10.93	19.83	0.009	10.85
11/26/2015	19.71	0.00	0.00	0.107	19.82	0.246	0.107	0.010	0.000	0.582	0.254	3.05	0.00	4.67	10.90	3.40	4.68	11.74	19.82	0.010	11.63
11/27/2015	18.09	0.00	0.00	0.081	18.17	0.210	0.081	0.009	0.000	0.495	0.268	3.90	0.00	3.76	9.45	4.19	3.77	10.21	18.17	0.009	10.13
11/28/2015	18.11	0.00	0.00	0.087	18.20	0.211	0.087	0.009	0.000	0.499	0.292	3.81	0.00	3.80	9.49	4.11	3.80	10.28	18.20	0.009	10.20
11/29/2015	20.00	0.00	0.00	0.087	20.09	0.241	0.087	0.010	0.000	0.570	0.287	3.66	0.00	4.43	10.80	3.99	4.44	11.66	20.09	0.010	11.57
11/30/2015	19.54	0.00	0.00	0.079	19.62	0.241	0.079	0.010	0.000	0.569	0.249	3.22	0.00	4.12	11.13	3.54	4.13	11.95	19.62	0.010	11.87

APPENDIX B – DAILY IBT AMOUNTS

	(1)	(2)	(3)	(4)	(5)=1+2 +3+4	(6)	(7)	(8)	(9)	(10)	(11)	(12)	(13)	(14)	(15)	(16)=6+7+1 2+13	(17)=8+9+ 14	(18)=10+ 11+15	(19)=16+1 7+18	(20)=8+9	(21)=18- 2-3-4
	Water Withdrawal/Purchase (mgd)				Consumptive Use (mgd)							Water Use Discharged as Wastewater (mgd)				Total Returned/Used in Each Basin (mgd)				Interbasin Transfer (mgd)	
	Jordan Lake Withdrawal	Neuse Basin Purchase			Total System Use	Haw		Cape Fear		Neuse		Haw		Cape Fear	Neuse	Haw	Cape Fear	Neuse	Total for All Basins	Haw to Cape Fear	Haw to Neuse
	Haw	Raleigh	Durham	Durham Co. Reclaimed		Potable	WRF Reuse	Potable	WRF Reuse	Potable	WRF Reuse	WTP Process Water	WRF	WRF	Total WRFs						
12/1/2015	18.81	0.00	0.00	0.106	18.92	0.223	0.106	0.009	0.000	0.526	0.250	3.77	0.00	3.79	10.25	4.10	3.80	11.02	18.92	0.009	10.91
12/2/2015	18.71	0.00	0.00	0.099	18.81	0.229	0.099	0.009	0.000	0.540	0.278	3.24	0.00	3.81	10.60	3.57	3.82	11.42	18.81	0.009	11.32
12/3/2015	20.39	0.00	0.00	0.107	20.50	0.248	0.107	0.010	0.000	0.586	0.272	3.62	0.00	4.16	11.49	3.98	4.17	12.35	20.50	0.010	12.24
12/4/2015	19.81	0.00	0.00	0.084	19.89	0.232	0.084	0.009	0.000	0.548	0.224	4.10	0.00	4.05	10.65	4.42	4.06	11.42	19.89	0.009	11.34
12/5/2015	17.62	0.00	0.00	0.080	17.70	0.213	0.080	0.009	0.000	0.503	0.409	3.21	0.00	3.79	9.49	3.50	3.79	10.40	17.70	0.009	10.32
12/6/2015	19.20	0.00	0.00	0.080	19.28	0.233	0.080	0.010	0.000	0.551	0.417	3.40	0.00	4.23	10.36	3.71	4.24	11.32	19.28	0.010	11.24
12/7/2015	21.54	0.00	0.00	0.079	21.62	0.267	0.079	0.011	0.000	0.631	0.412	3.43	0.00	4.55	12.24	3.78	4.56	13.28	21.62	0.011	13.20
12/8/2015	19.79	0.00	0.00	0.110	19.90	0.226	0.110	0.009	0.000	0.533	0.240	4.55	0.00	4.03	10.20	4.89	4.04	10.98	19.90	0.009	10.87
12/9/2015	18.27	0.00	0.00	0.078	18.35	0.225	0.078	0.009	0.000	0.530	0.246	3.06	0.00	3.94	10.26	3.36	3.95	11.03	18.35	0.009	10.96
12/10/2015	20.36	0.00	0.00	0.134	20.49	0.249	0.134	0.010	0.000	0.588	0.261	3.56	0.00	4.27	11.42	3.94	4.28	12.27	20.49	0.010	12.13
12/11/2015	19.57	0.00	0.00	0.114	19.68	0.236	0.114	0.010	0.000	0.557	0.256	3.62	0.00	4.22	10.67	3.97	4.23	11.49	19.68	0.010	11.37
12/12/2015	19.92	0.00	0.00	0.115	20.04	0.236	0.115	0.010	0.000	0.557	0.226	3.98	0.00	4.36	10.55	4.33	4.37	11.33	20.04	0.010	11.21
12/13/2015	19.45	0.00	0.00	0.120	19.57	0.242	0.120	0.010	0.000	0.571	0.199	3.11	0.00	4.45	10.87	3.47	4.46	11.64	19.57	0.010	11.52
12/14/2015	19.11	0.00	0.00	0.122	19.23	0.233	0.122	0.010	0.000	0.551	0.260	3.36	0.00	4.13	10.57	3.72	4.14	11.38	19.23	0.010	11.26
12/15/2015	20.32	0.00	0.00	0.094	20.41	0.240	0.094	0.010	0.000	0.566	0.264	4.11	0.00	4.29	10.84	4.44	4.30	11.67	20.41	0.010	11.57
12/16/2015	18.80	0.00	0.33	0.091	19.22	0.236	0.091	0.010	0.000	0.557	0.260	3.18	0.00	4.10	10.79	3.50	4.11	11.61	19.22	0.010	11.18
12/17/2015	19.10	0.00	0.00	0.121	19.22	0.241	0.121	0.010	0.000	0.568	0.265	2.84	0.00	3.93	11.25	3.20	3.94	12.08	19.22	0.010	11.96
12/18/2015	19.58	0.00	0.00	0.119	19.70	0.235	0.119	0.010	0.000	0.555	0.225	3.71	0.00	3.86	10.99	4.06	3.87	11.77	19.70	0.010	11.65
12/19/2015	17.08	0.00	0.00	0.073	17.15	0.222	0.073	0.009	0.000	0.523	0.250	2.08	0.00	3.93	10.07	2.37	3.94	10.84	17.15	0.009	10.77
12/20/2015	17.99	0.00	0.00	0.078	18.07	0.222	0.078	0.009	0.000	0.524	0.406	2.98	0.00	3.98	9.87	3.28	3.99	10.79	18.07	0.009	10.72
12/21/2015	19.62	0.00	0.00	0.080	19.70	0.239	0.080	0.010	0.000	0.565	0.432	3.42	0.00	4.04	10.92	3.74	4.05	11.91	19.70	0.010	11.83
12/22/2015	18.34	0.00	0.00	0.087	18.43	0.220	0.087	0.009	0.000	0.520	0.442	3.44	0.00	3.53	10.18	3.75	3.54	11.14	18.43	0.009	11.06
12/23/2015	17.81	0.00	0.00	0.090	17.90	0.219	0.090	0.009	0.000	0.516	0.264	3.02	0.00	3.28	10.51	3.33	3.28	11.29	17.90	0.009	11.20
12/24/2015	17.75	0.00	0.00	0.099	17.85	0.224	0.099	0.009	0.000	0.529	0.260	2.60	0.00	3.58	10.55	2.92	3.59	11.34	17.85	0.009	11.24
12/25/2015	18.48	0.00	0.00	0.057	18.54	0.219	0.057	0.009	0.000	0.518	0.440	3.61	0.00	3.75	9.93	3.89	3.76	10.89	18.54	0.009	10.83
12/26/2015	16.75	0.00	0.00	0.054	16.80	0.202	0.054	0.008	0.000	0.477	0.448	3.05	0.00	3.38	9.19	3.31	3.38	10.11	16.80	0.008	10.06
12/27/2015	18.07	0.00	0.00	0.054	18.12	0.217	0.054	0.009	0.000	0.511	0.251	3.39	0.00	3.71	9.98	3.66	3.72	10.75	18.12	0.009	10.69
12/28/2015	17.47	0.00	0.00	0.039	17.51	0.219	0.039	0.009	0.000	0.518	0.253	2.58	0.00	3.78	10.11	2.84	3.79	10.88	17.51	0.009	10.84
12/29/2015	17.52	0.00	0.00	0.066	17.59	0.209	0.066	0.009	0.000	0.494	0.260	3.35	0.00	3.66	9.54	3.63	3.66	10.30	17.59	0.009	10.23
12/30/2015	18.21	0.00	0.00	0.091	18.30	0.216	0.091	0.009	0.000	0.510	0.235	3.61	0.00	3.40	10.23	3.92	3.41	10.97	18.30	0.009	10.88
12/31/2015	19.22	0.00	0.00	0.098	19.32	0.238	0.098	0.010	0.000	0.561	0.426	3.14	0.00	3.63	11.22	3.48	3.64	12.20	19.32	0.010	12.10