



UNION COUNTY YADKIN RIVER WATER SUPPLY PROJECT

Presented by: **HDR** &



October 15, 2013



Outline

- ❖ WHO is Union County, NC?
- ❖ WHAT is the process?
- ❖ WHY does Union County need water?
- ❖ WHERE can we find a solution?
- ❖ WHEN will we need it?
- ❖ HOW can you participate?
- ❖ Next Steps

Purpose and Need

❖ Purpose:

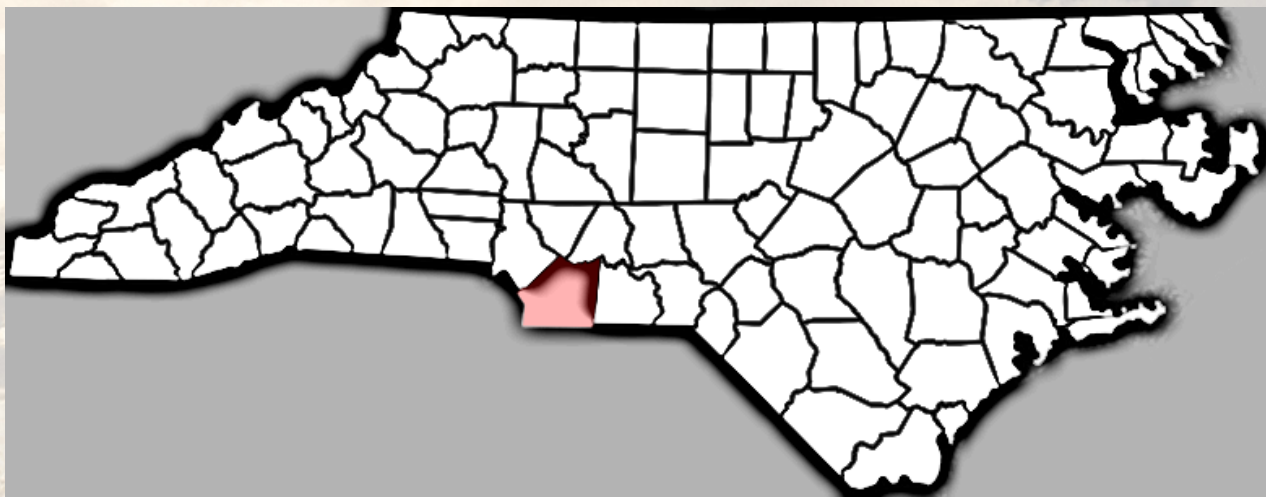
- *Union County is requesting an Interbasin Transfer (IBT) for a maximum daily amount of 28 million gallons per day (mgd) from the Yadkin River Sub-Basin to the Rocky River Sub-Basin, both of which are part of the Yadkin River Basin.*

❖ Need:

- *The requested amount is based on 2050 water demand projections in the County's Yadkin River Basin service area.*



WHO IS UNION COUNTY?





This is Union County, NC



ESTABLISHED 1842
UNION COUNTY GOVERNMENT
NORTH CAROLINA





This is Union County, NC

(Est. 1892)

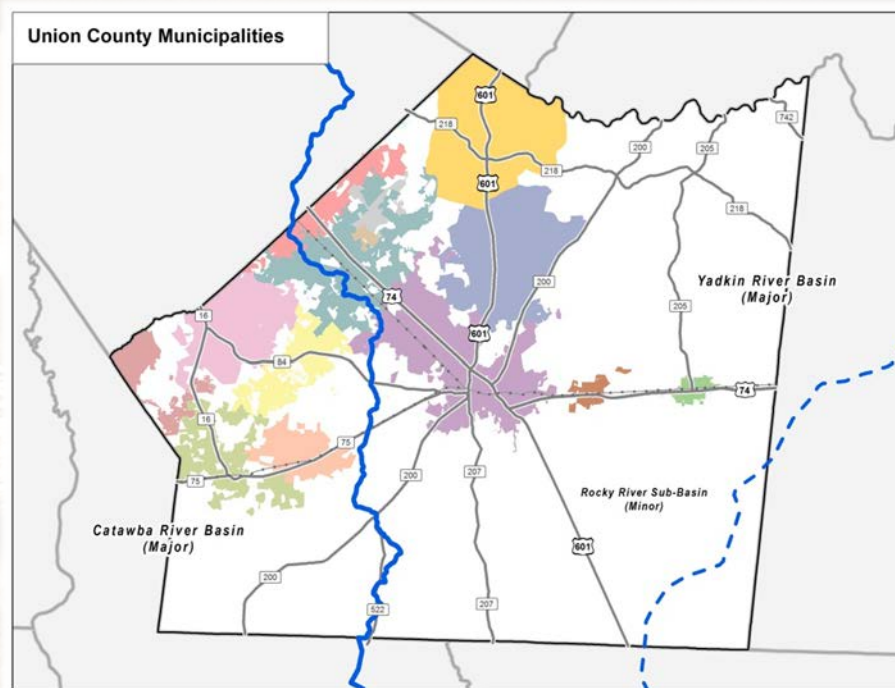
- ❖ Located in south central piedmont of NC
- ❖ Population estimated at just over 200,000
- ❖ Approx. 643 square miles of land
- ❖ In the last decade Union County has been:
 - *One of the fastest growing counties in NC, due to economic growth, education, and regional location*
 - *A top 20 fastest growing county in the nation*
- ❖ Land Use
 - *Western portion is suburban*
 - *Eastern portion is more rural with farms and open spaces*
- ❖ Flourishing economic growth due to agriculture, business, and proximity to jobs



This is Union County, NC

Incorporated towns and villages:

- Fairview
- Hemby Bridge
- Indian Trail
- Lake Park
- Marshville
- Marvin
- Mineral Springs
- Monroe (County Seat)
- Stallings
- Unionville
- Waxhaw
- Weddington
- Wesley Chapel
- Wingate

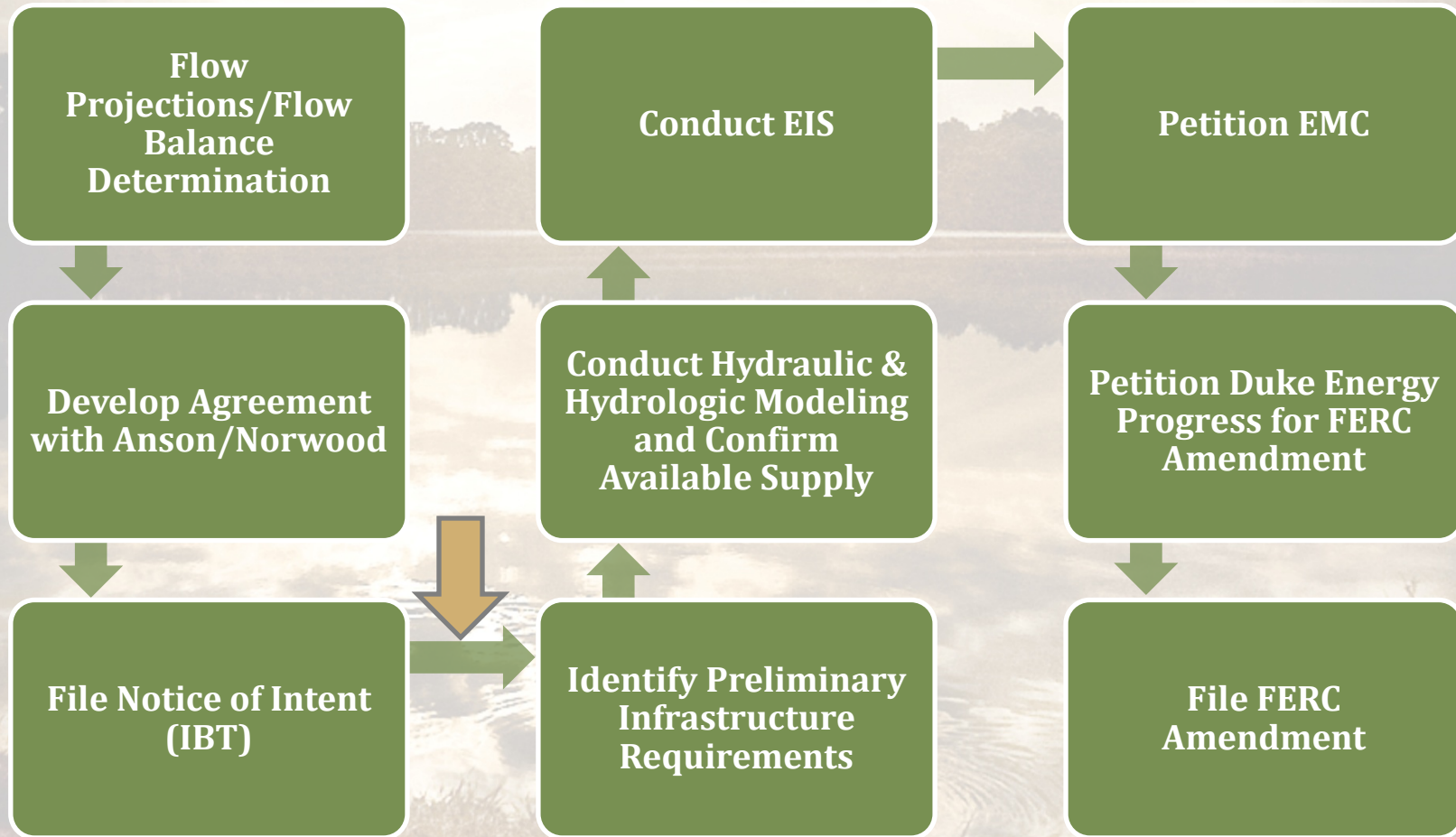




WHAT IS THE PROCESS?



The Process





Key Initial Permitting Requirements

SEPA - EIS

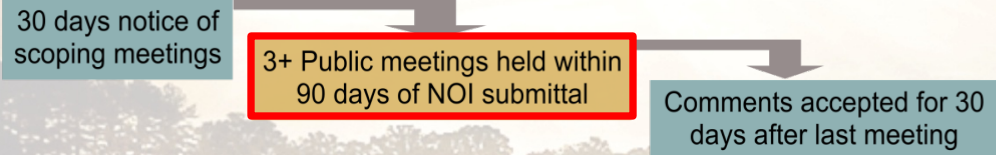
Interbasin Transfer (IBT) Certificate

Duke EnergyProgress FERC Amendment

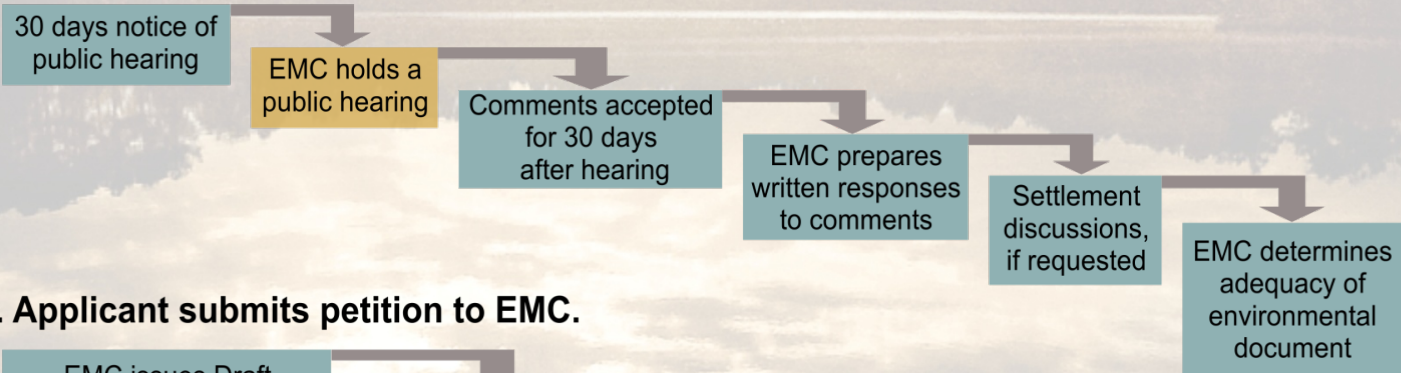


IBT Certification Process

I. Applicant submits Notice of Intent to file a petition.



II. Applicant submits draft environmental document (EIS or EA).



III. Applicant submits petition to EMC.



EMC ISSUES FINAL DETERMINATION



EIS Integrated Process

Scoping

Purpose
and
Need

Existing
Conditions
Evaluation

Development
& Evaluation
of
Alternatives

Selection
of the
Preferred
Alternative

Consequences
of
Proposed
Action

Draft
Document

Final
Document

FONSI/
ROD

Consensus Building Process

Implied Consent

Consensus on Evaluation

Consensus on Final Alternatives

Consensus on Purpose and Need

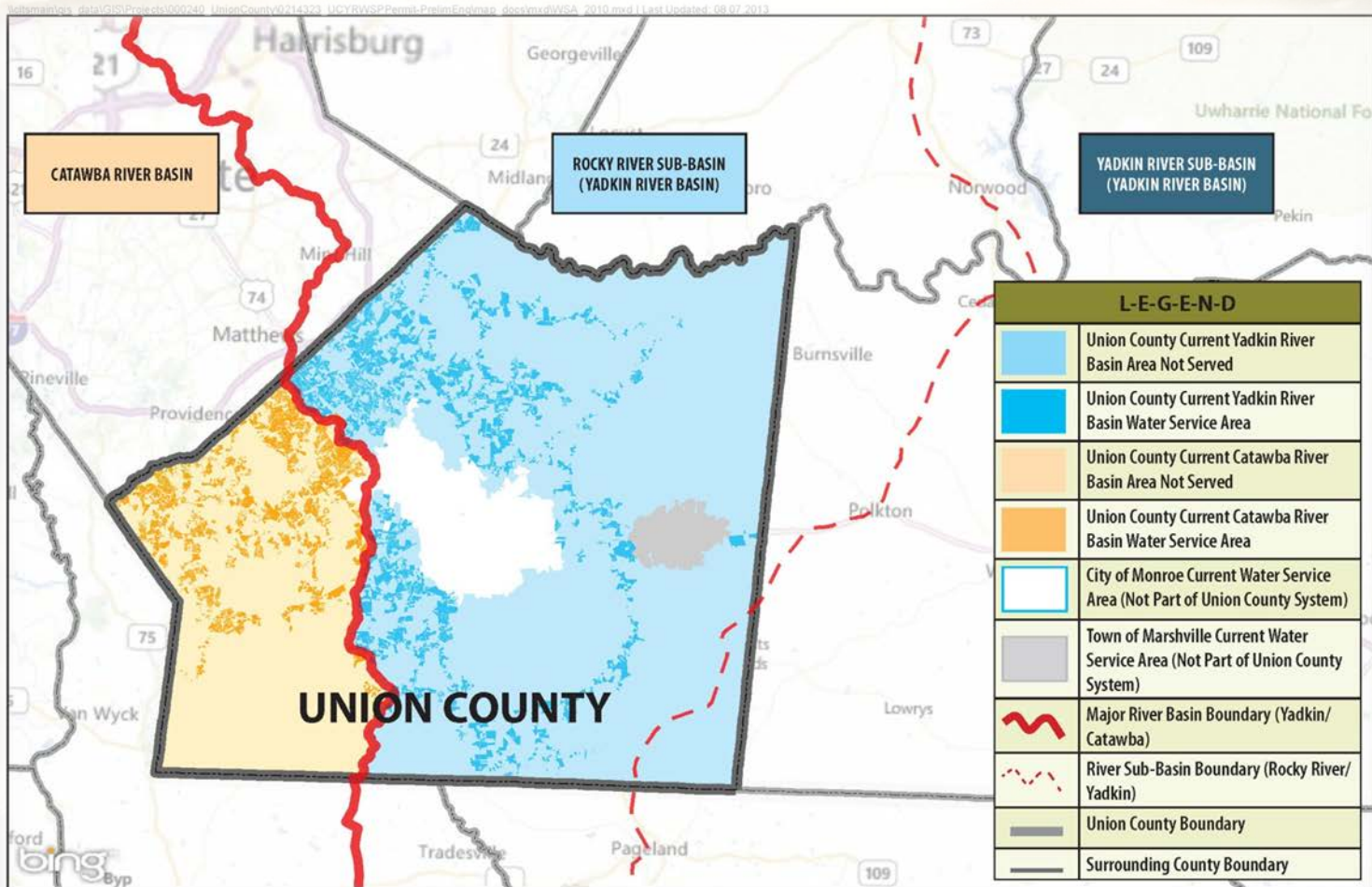
Consensus on Study Approach and Scope



WHY DOES UNION COUNTY NEED WATER?

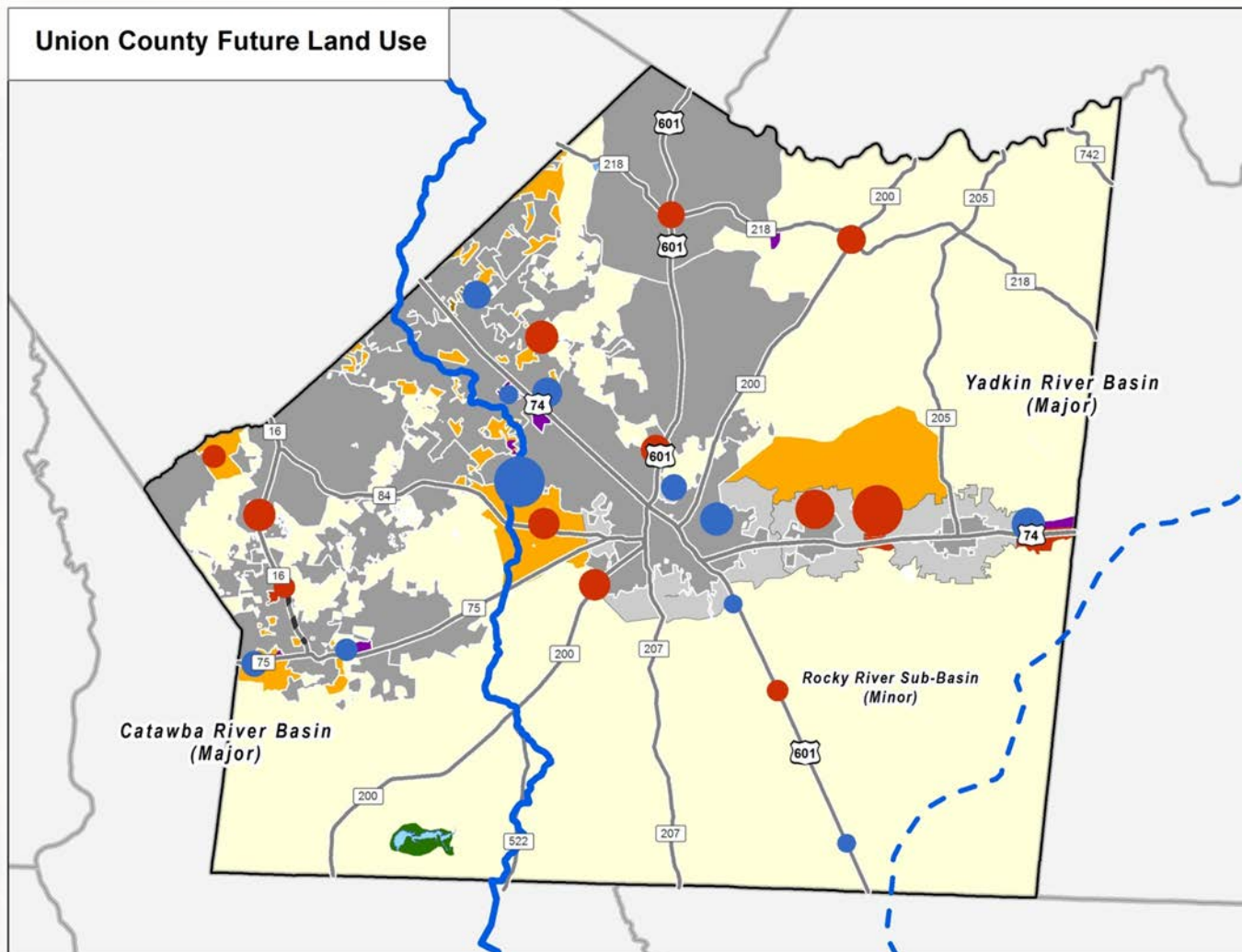


Union County Water Service Areas



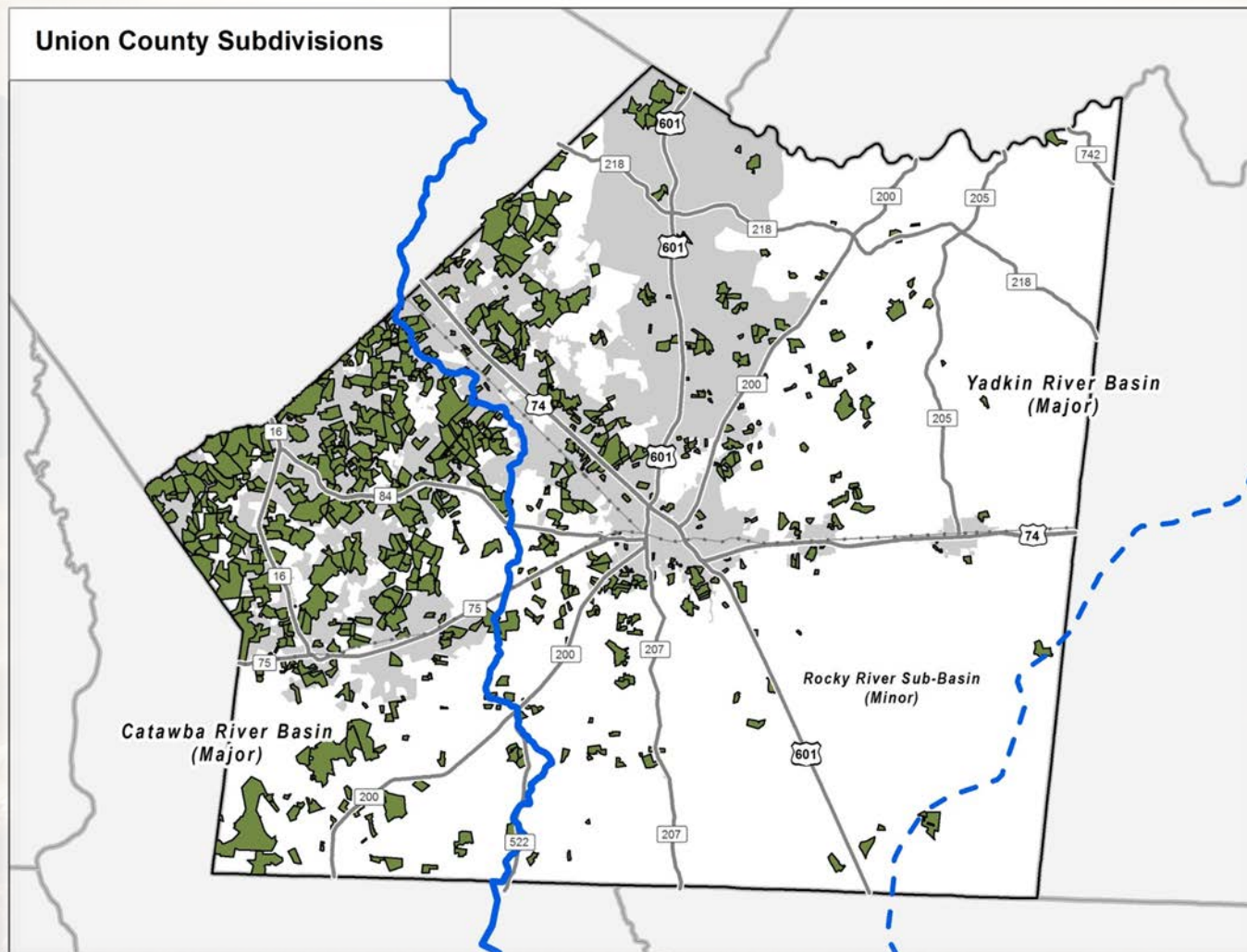


The Need for Water: Future Land Use





The Need for Water: Suburban Development

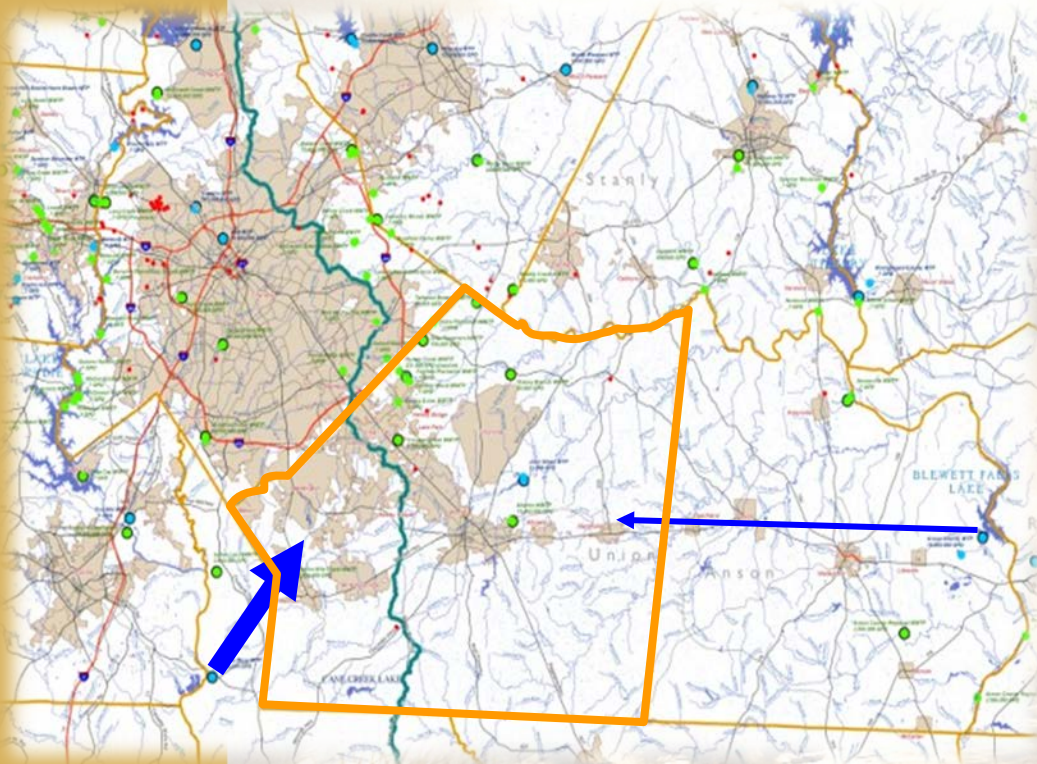




WHERE CAN WE FIND A SOLUTION?



Union County Water Supply: The Status

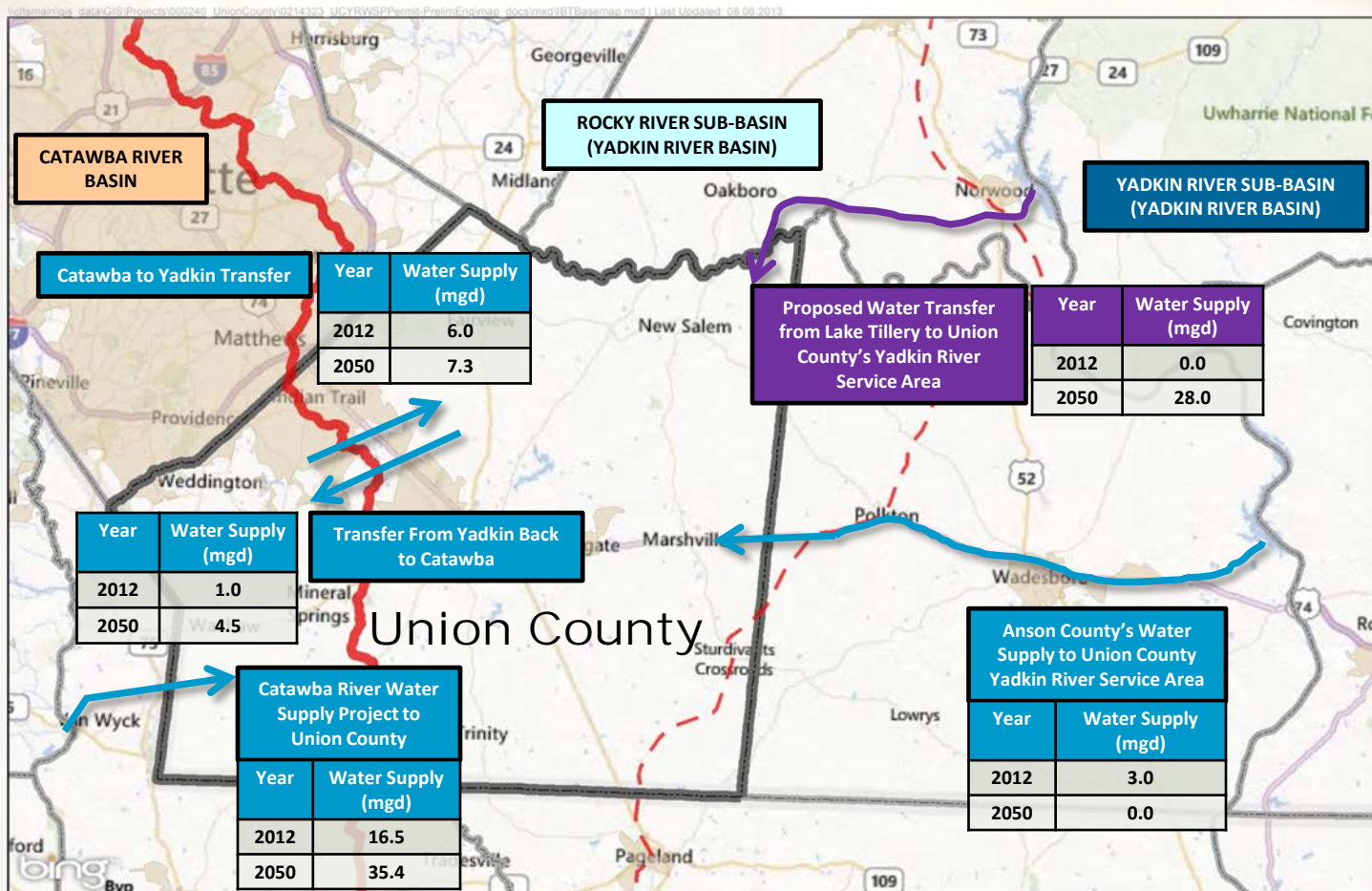


- ❖ An existing authorized IBT limits the amount of Catawba River water the County can use outside the basin
- ❖ Only 30% of Union County is in the Catawba Basin but 83% of the water currently comes from this source

County is currently limited to an IBT of 5 MGD from the Catawba Basin



Union County Water Supply: The Solution?





The Solution: Alternatives To Consider

- 1) Lake Tillery IBT to UC
- 2) Tuckertown Reservoir IBT to UC
- 3) Blewett Falls Lake IBT to UC
- 4) Main Stem Yadkin River IBT to UC
- 5) Rocky River Withdrawal in UC
- 6) Catawba River Water Supply Project Expansion
- 7) Interconnection with CMUD
- 8) Groundwater Supply
- 9) Demand Management/Conservation
- 10) Direct Potable Reuse
- 11) No Action
- 12) Water returns to the Yadkin Basin (must be evaluated)



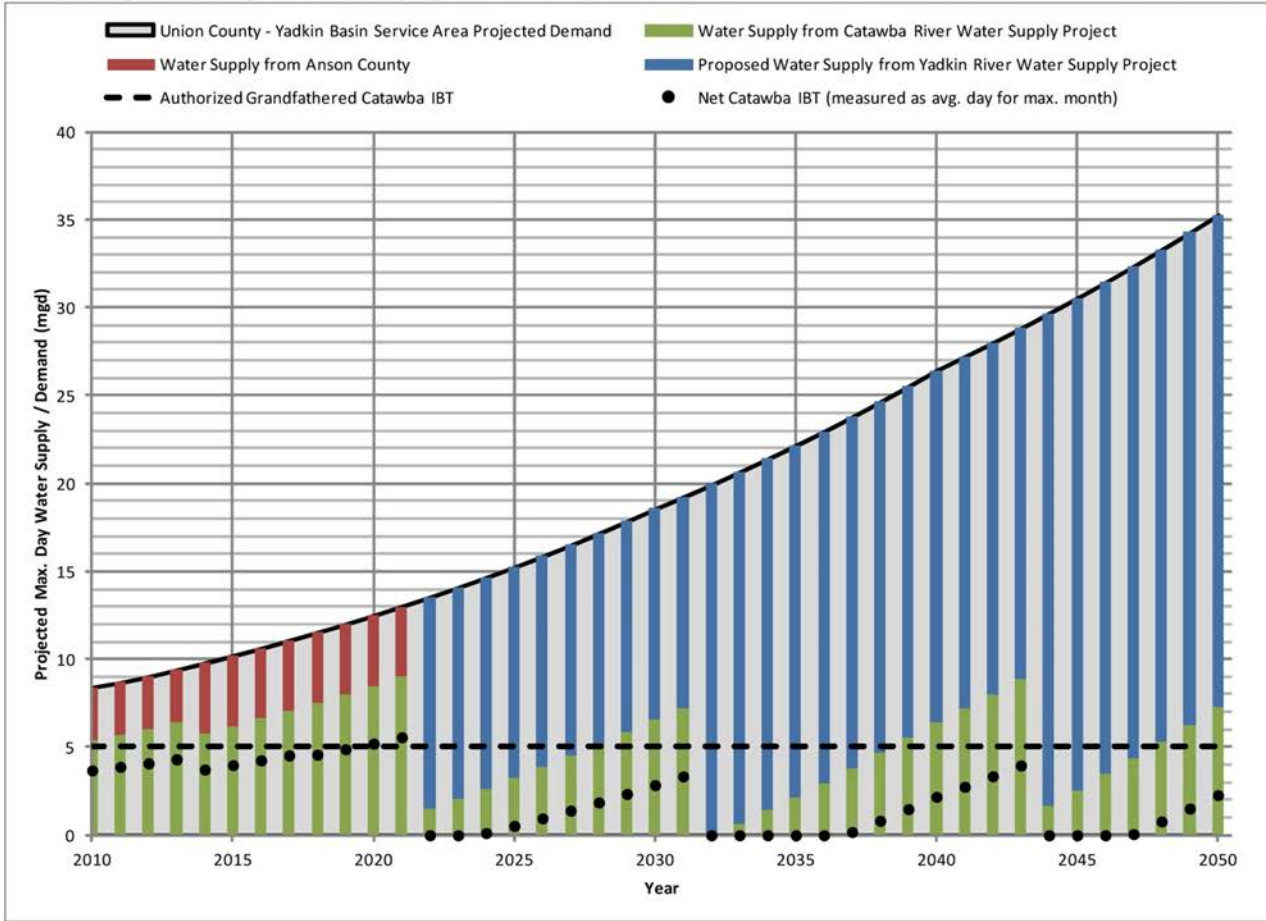


WHEN WILL WE NEED IT?



The Timeline: Union County Yadkin Water Needs

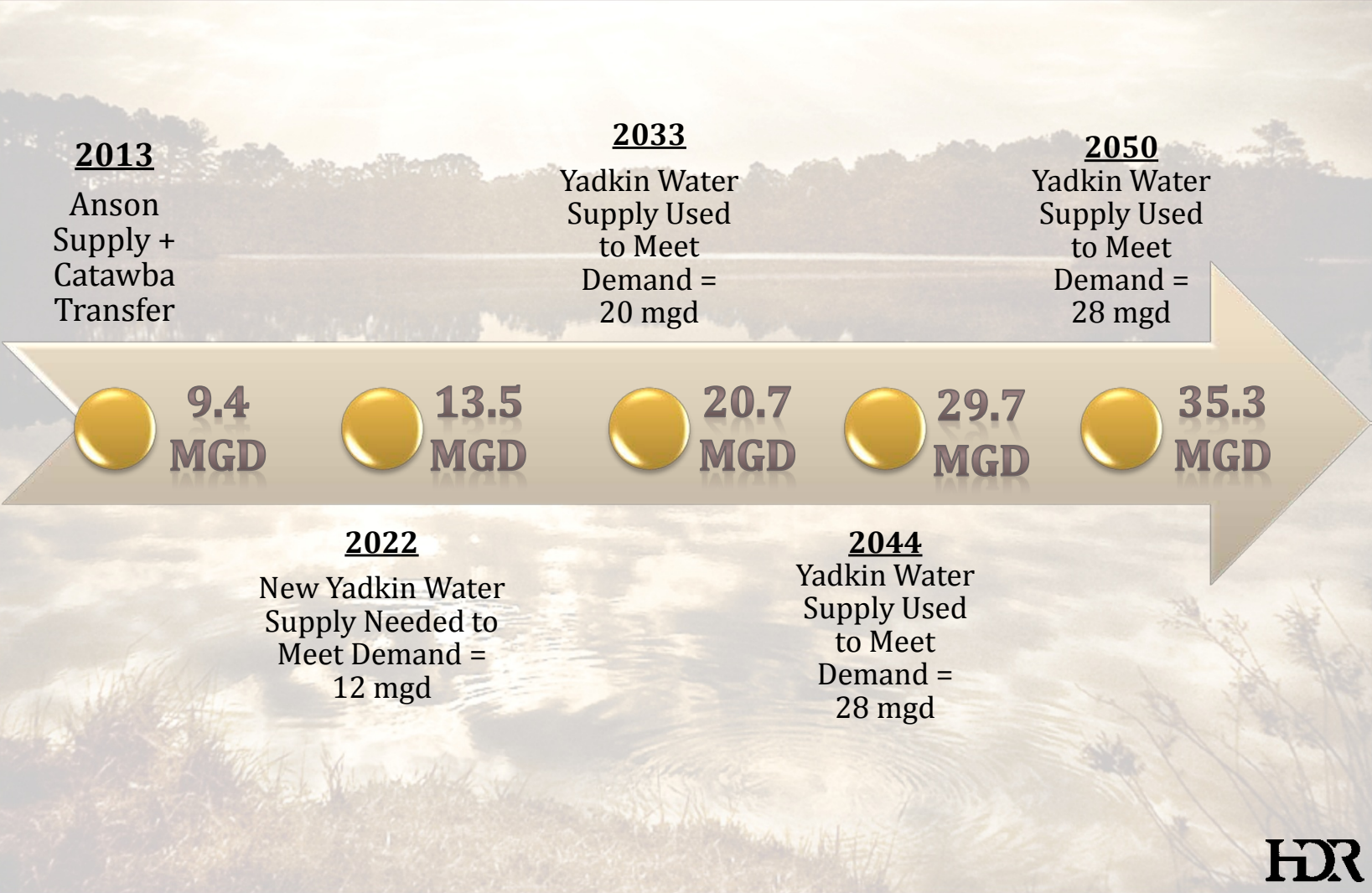
\\citsmain\gis_data\GIS\Projects\000240_UnionCounty\0214323_UCYRWSPPermit-PrelimEng\map_docs\mxd\Chart.mxd | Last Updated: 08.07.2013





The Timeline: Union County Yadkin Water Needs

**YADKIN
SERVICE
AREA
DEMAND**





HOW CAN YOU PARTICIPATE?



How Can You Participate? EIS Scoping Input

ENGAGE

RESPOND

10/3/2013
4:30 PM

- Public Meeting #1

Stanly County Public Library
133 East Main Street
Albemarle, NC 28001

10/14/2013
5:00 PM

- Public Meeting #2

Rowan-Cabarrus Community College –
Salisbury Campus
1333 Jake Alexander Blvd. South
Salisbury, NC 28146-1595

10/15/2013
5:00 PM

- Public Meeting #3

Northeast Technical College –
Cheraw Campus
1201 Chesterfield Highway
Cheraw, SC 29520

11/15/2013

- Deadline for Submission of Public
Comments (30 days after last
meeting)



How Can You Participate? Comments

- ❖ Written comments should be mailed to:

*Union County – YRWSP – IBT Comments
HDR Engineering Inc. of the Carolinas
Attn: Mr. Kevin Mosteller, PE
440 South Church Street
Charlotte, NC 28202*

- ❖ Handwritten comments turned in tonight on official forms.
- ❖ Comments may also be submitted electronically to:
unioncountyYRWSP@hdrinc.com



How Can You Participate? Comments

- ❖ Mailed and emailed comments will be given equal consideration
- ❖ Public comment period for this phase of the project closes on **November 15, 2013**
- ❖ Future opportunities to provide input during the overall IBT certificate request process

Next Steps...

