

U. S. Army Corps of Engineers Charleston District Regulatory Division Overview

Charleston District

Northwest Regulatory Branch,
Columbia, SC



FEB 12 2008

Corps Regulatory Program

Department of Army Permits

- **General Permits**
- **Individual Permits**

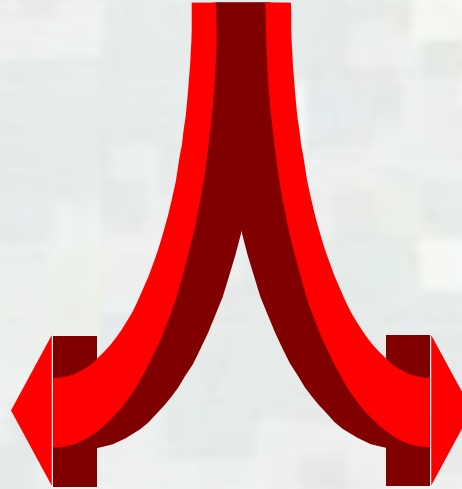


Corps Regulatory Program

General Permits

Nationwide Permits

Issued by Chief of Engineers for certain activities that are determined to have minimal impacts.



Regional Permits

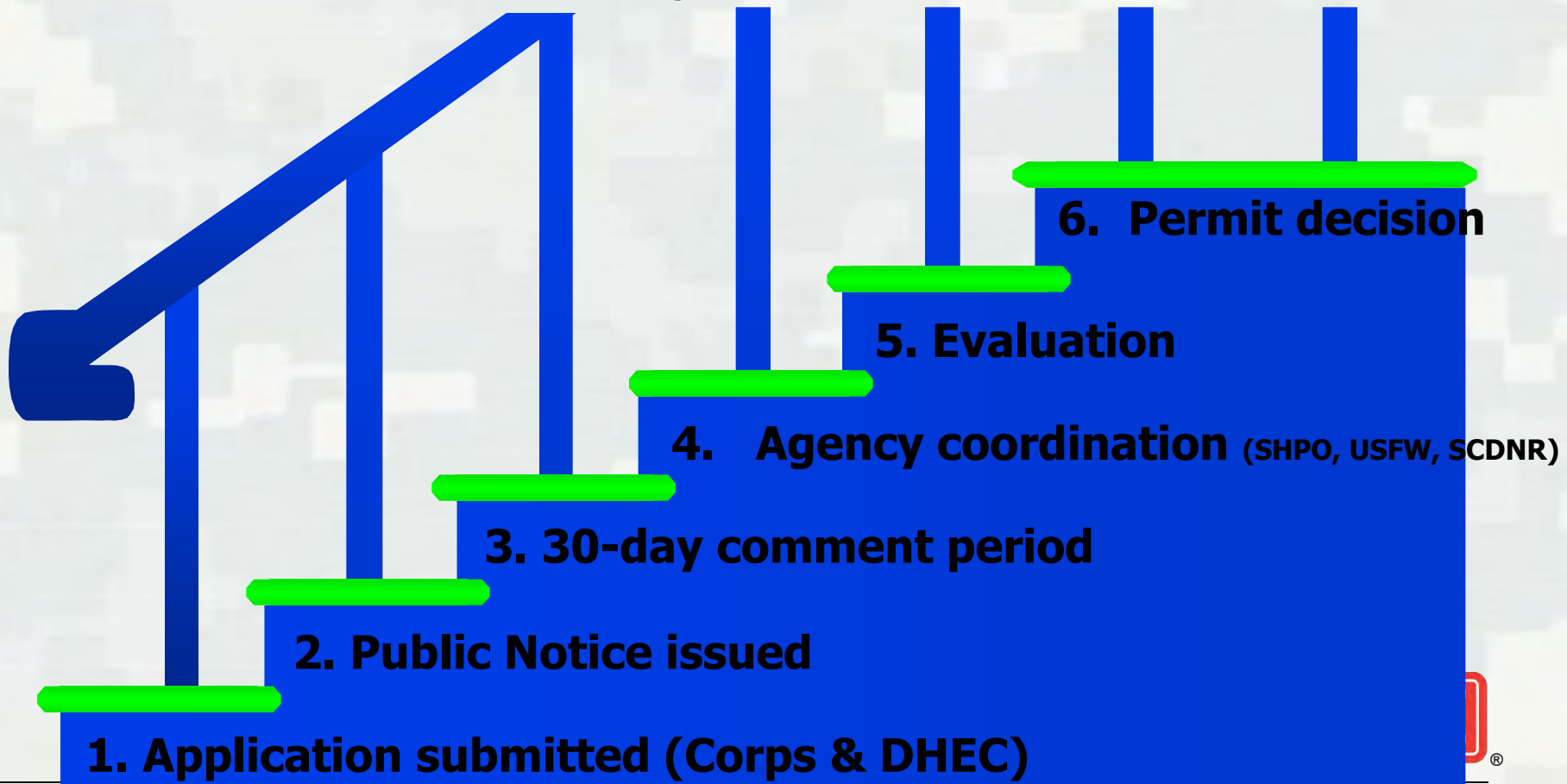
Issued by District Commander for certain repetitive minor activities within a specific area.



Corps Regulatory Program

Individual Permits

Processing Steps



Corps Regulatory Program

Public Interest Review Factors

conservation
economics
aesthetics
general environmental
concerns
wetlands
historic properties
fish and wildlife values
flood hazards
floodplain values
land use
navigation
shore erosion and accretion

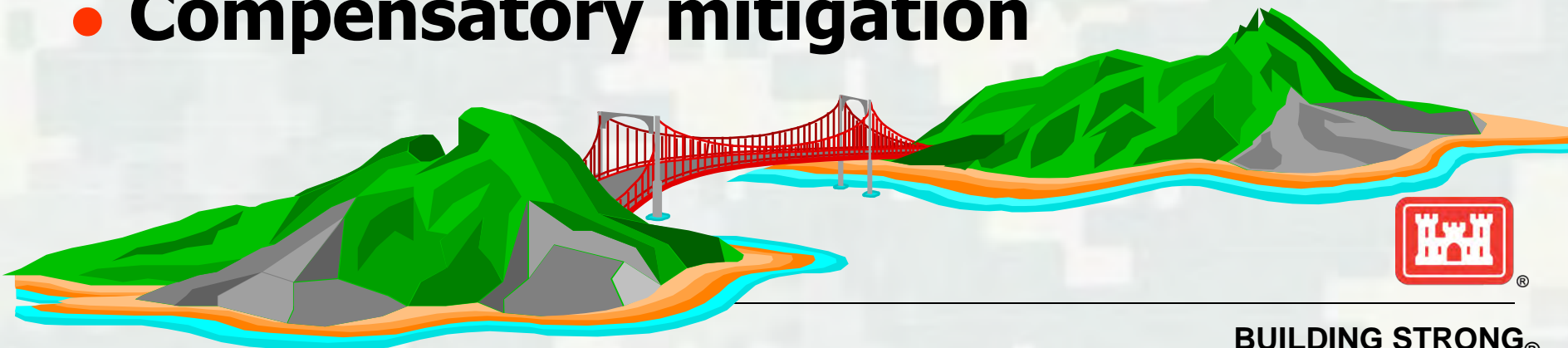
recreation
water supply & conservation
water quality
energy needs
safety
food and fiber production
mineral needs
considerations of
property ownership
in general, the needs and
welfare of the people



Corps Regulatory Program

404 (b) (1) Guidelines

- **Determine water dependency**
- **Consider off-site alternatives**
- **Avoid unnecessary impacts**
- **Minimize unavoidable impact**
- **Compensatory mitigation**



Corps Regulatory Program Mitigation

“The Corps will strive to avoid adverse impacts and offset unavoidable adverse impacts to existing aquatic resources, and for wetlands, will strive to achieve a **goal of no overall net loss of functions and values.**” (1990 EPA/Army MOA)



New Mitigation Hierarchy

- Mitigation Banks
- In Lieu Fee Programs
- Permittee Responsible under a Watershed Approach
- On-site and/or In Kind PRM Mitigation
- Off-site and/or Out of Kind PRM Mitigation
 - ▶ Soft Preference/Document Decision

