



NC OneMap 2012

Current and Future

July 24, 2012





NC OneMap: Now and Future

Jeff Brown- CGIA



Topics



- GIS Coordination
- NC OneMap
 - Now: discover, access, share
 - Future: more value for more users
 - Future: OneMap and Next Generation 911



GICC



- Coordination
 - Policy, standards, practices, initiatives
- Working groups
 - Imagery, roads, tax parcels, streams, boundaries...
- <http://www.ncgicc.com>





Coordination Priorities

- NC OneMap
- Imagery program
- Data standards
- State GIS Strategy



NC OneMap – Current



- <http://data.nconemap.com>
- Geospatial Portal: discovery and access
- Image service for 2010 statewide imagery
- Download 2010 tiles in area of interest
- Map services
- Download zipped shapefiles



Home

The NC OneMap GeoPortal makes it easy to discover and use geospatial information.

Find Resource

HURRICANE IRENE

Post-hurricane Irene imagery available online. The final NCDOT imagery (10/13/11) shows completed reconstruction of breached sections of NC 12.



NCDOT Imagery

(8.28.11, 8.30.11, 9.2.11, 9.8.11, 9.15.11, 9.28.11, 9.30.11, 10.13.11)

[web service](#) [view it](#)

NOAA Imagery

(8.28.11)

[web service](#) [view it](#)

2010 IMAGERY

[web service](#) [view it](#) [download](#)

New datasets / services



- Hazardous waste layers
- Gas stations
- Managed areas (with conservation interest)
- Flood hazard areas





NC OneMap Data Explorer

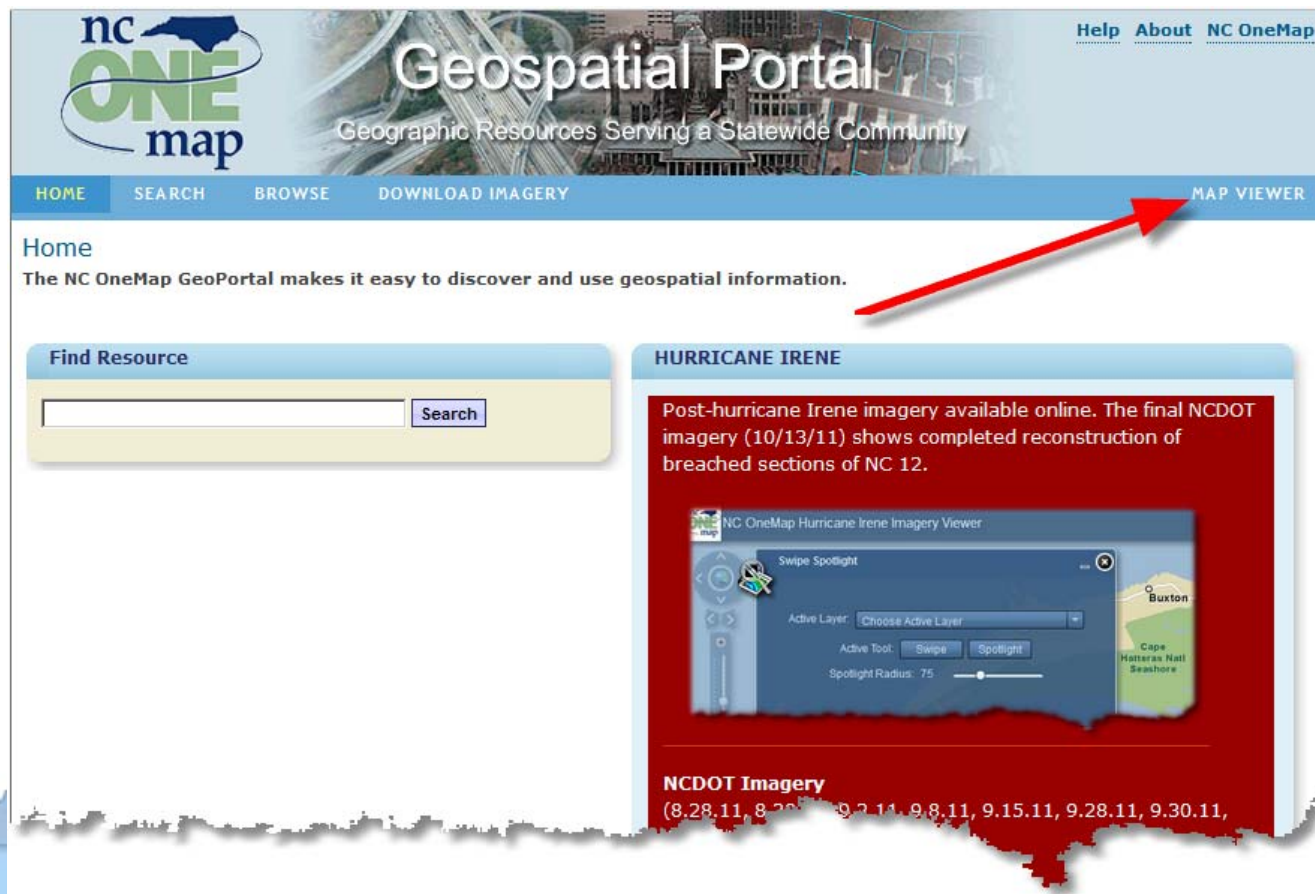
- Simple, intuitive interface
- Integrated with Geospatial Portal
- Web Mercator to support mash-ups
- Add your own service
- Choice of base maps



Finding the Data Explorer



1. Direct: <http://data.nconemap.com/geoportal/dataexplorer/index.jsp>
2. Visit the NC OneMap Geospatial Portal (<http://data.nconemap.com>)



NC ONEMAP DATA EXPLORER

 Find Data

 Add External Service

 Choose BaseMap

 Feedback

 Help


Details




-85.0810, 36.6805

v1.1

NC ONEMAP DATA EXPLORER

 Find Data

 Add External Service

Search NC OneMap

Would you like to limit your search area?

- ☒ No thanks
- ☐ Yes, use the extent of the map to restrict my results

Enter search keywords

hazardous



Sort Results By

Title



Result(s): 1 - 4 of 4

Previous

Next



Hazardous Waste Sites



Inactive Hazardous Sites



NC OneMap Hazardous Waste - Map Service

[Service Info](#) [Preview](#) [Globe \(.kml\)](#) [ArcGIS \(.nmf\)](#) [ArcGIS \(.lyr\)](#) [Add To Map](#) [Details](#)
[Metadata XML](#)



Pre-Regulatory Landfill Sites

NC ONEMAP DATA EXPLORER

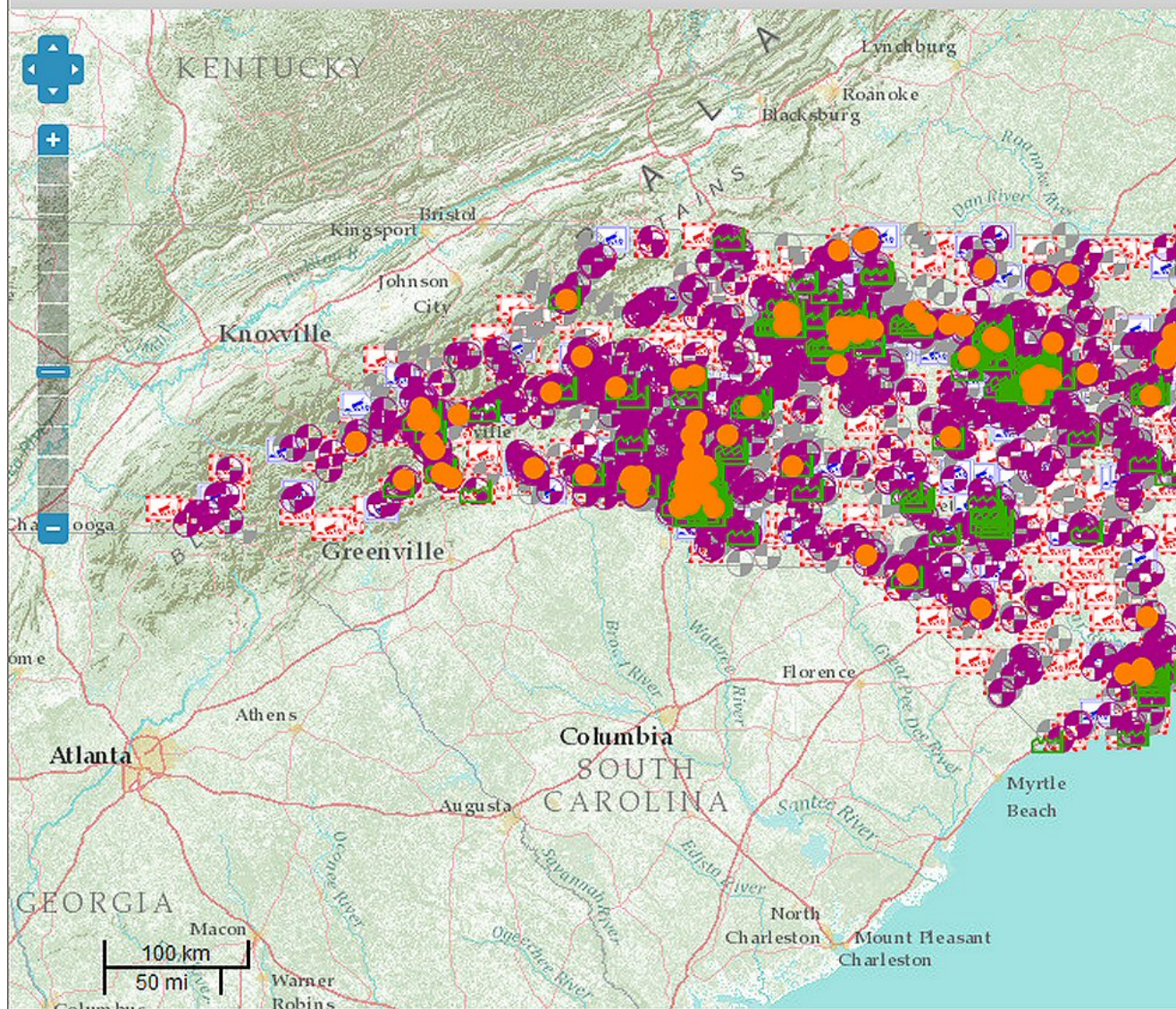
 Find Data

 Add External Service

 Choose BaseMap

 Feedback

 Help



Details

Layers

Legend

Legend

NC1Map_Hazardous_Waste

Brownfields



Dry-cleaning Solvent Clean-up Act
Program Sites



Hazardous Waste Sites



Inactive Hazardous Sites



Active Permitted Landfills



Pre-Regulatory Landfill Sites



Manufactured Gas Plant Sites



-85.0041, 37.6696

v1.1

NC ONEMAP DATA EXPLORER

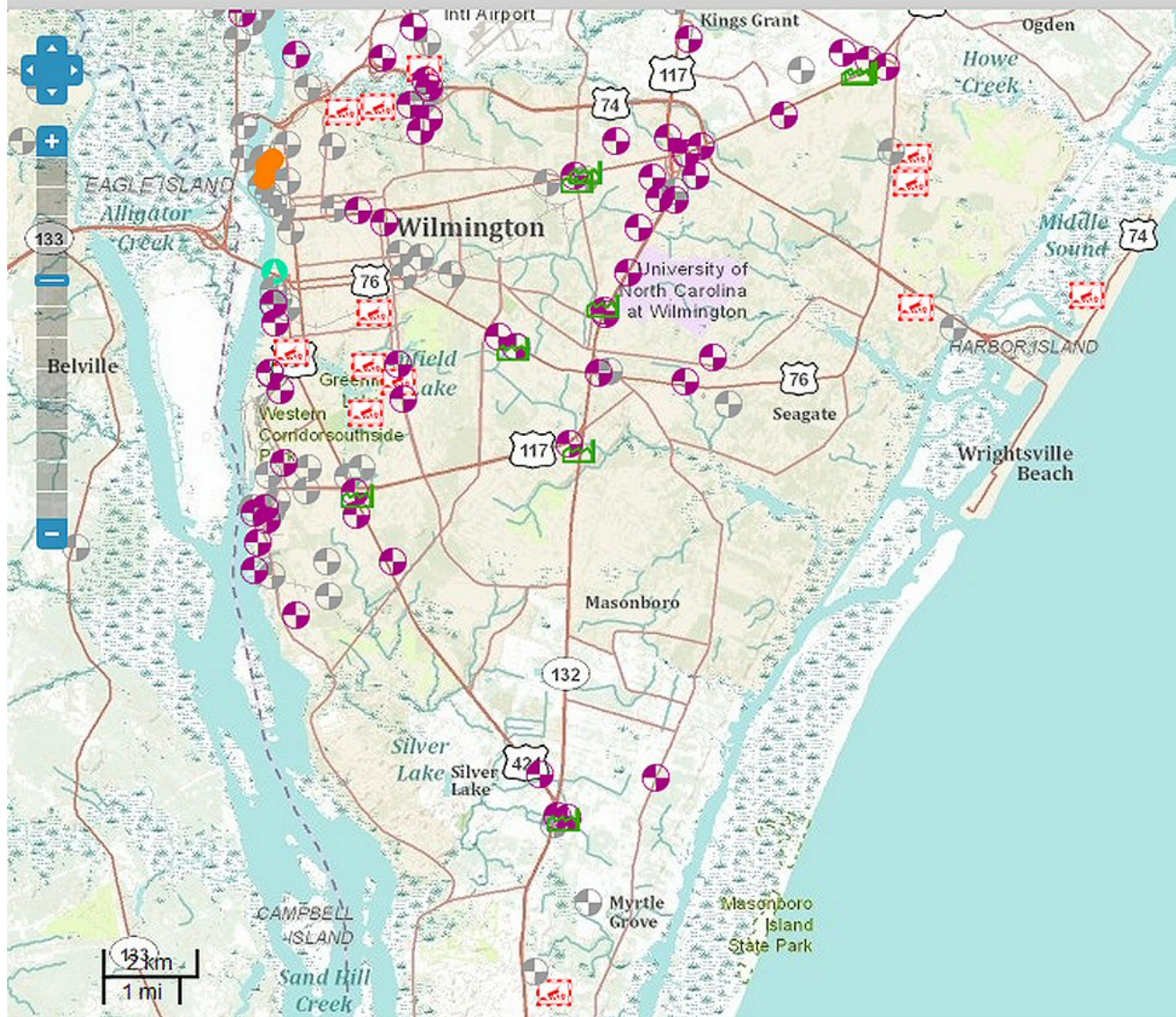
 Find Data

 Add External Service

 Choose BaseMap

 Feedback

 Help



Details

Layers

Legend

Legend

NC1Map_Hazardous_Waste

Brownfields



Dry-cleaning Solvent Clean-up Act
Program Sites



Hazardous Waste Sites



Inactive Hazardous Sites



Active Permitted Landfills



Pre-Regulatory Landfill Sites



Manufactured Gas Plant Sites



-77.8244, 34.1725

v1.1

Data Explorer: Upcoming Features



- Identify
 - Display attributes of features by clicking on map
- Print
 - Create basic map (Title, Legend, etc.)
- Optimize for mobile devices





NC OneMap -- Future

- One-stop discovery and access
- Content: add quantity and quality
 - NC OneMap Database
 - Other hosts providing access
- Statewide compilations of local data
- Web services – imagery and layers
- Reliability to meet user requirements





Web services

- Local display of data from outside servers
 - NC OneMap imagery service
 - NC OneMap web map services
 - Other servers
- Requirements
 - Geospatial formatting for interoperability
 - Dependable, reliable, easy, fast
 - Content: current, consistent, complete



NENA and Geospatial Reference



- Location (latitude/longitude)
- Jurisdiction
- Nearest address point / verify address
- Selected Emergency Service Zone / service contacts
- Reference: imagery, streets, buildings, etc.
- Distances to/from features



NG 9-1-1 and NC Statewide Data



- Imagery
- Address points
- Streets / address ranges
- Emergency Service Zones
- And more
 - Rail, streams, cell towers, landmarks, property boundaries



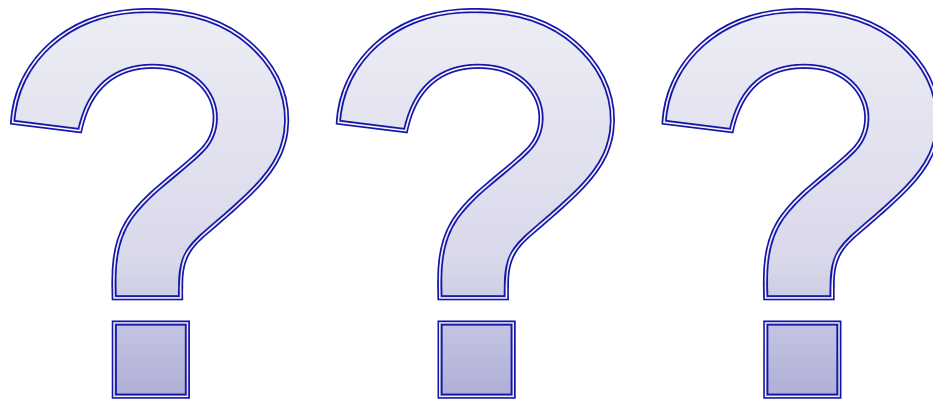


Shared Vision

- Reliable access to consistent, current geospatial data statewide
- Standards to enable data integration, data sharing and interoperability



Questions?



CGIA Coordination Contacts



Tim Johnson, CGIA Director

tim.johnson@nc.gov

Jeff Brown, Coordination Program Manager

jeff.brown@nc.gov

David Giordano, NC OneMap DBA

david.giordano@nc.gov

Brett Spivey, NC OneMap Application Developer

brett.spivey@nc.gov

