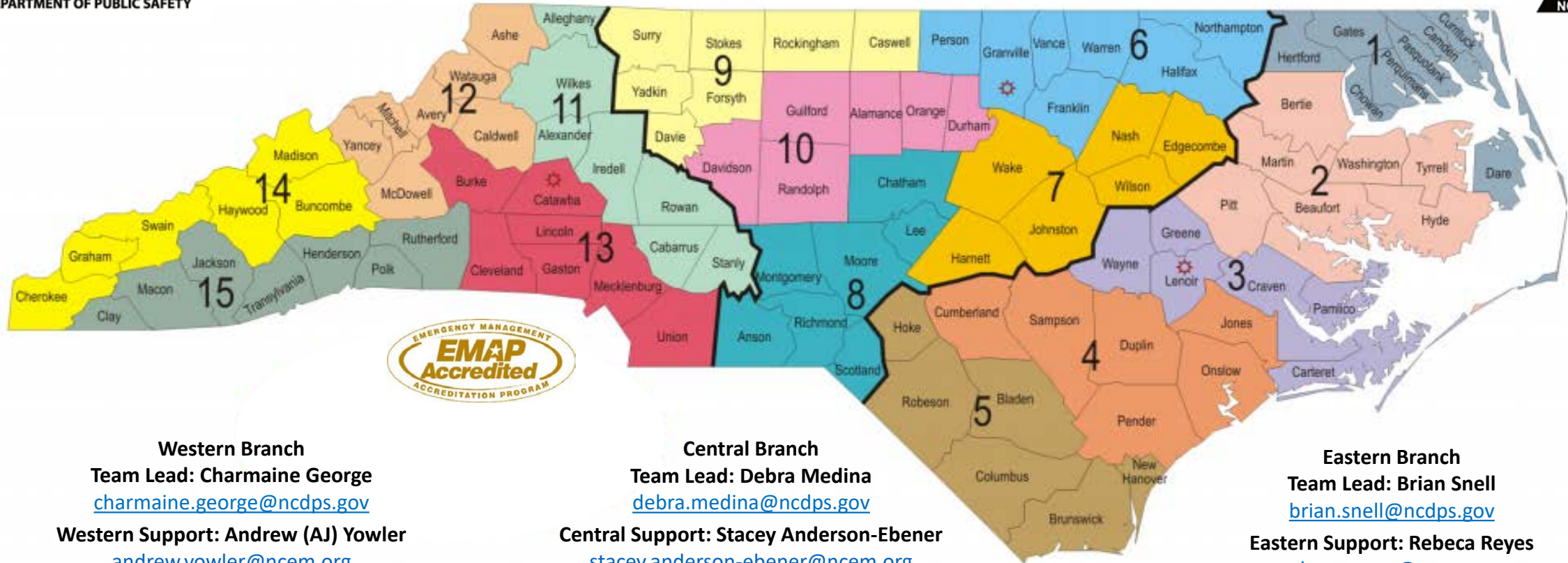




NCEM Recovery's Public Assistance Team Branch, Area & County Assignments as of 11/6/2020



Western Branch

Team Lead: Charmaine George
charmaine.george@ncdps.gov

Western Support: Andrew (AJ) Yowler
andrew.yowler@ncem.org

Central Branch

Team Lead: Debra Medina
debra.medina@ncdps.gov

Central Support: Stacey Anderson-Ebener
stacey.anderson-ebener@ncem.org

Eastern Branch

Team Lead: Brian Snell
brian.snell@ncdps.gov

Eastern Support: Rebeca Reyes
rebeca.reyes@ncem.org

Grants Managers

- 11: Andrew (AJ) Yowler andrew.yowler@ncem.org
- 12: Michele Faison michele.faison@ncdps.gov
- 13: Andy Andrews andy.andrews@ncdps.gov
- 14: Tara Fikes tara.fikes@ncdps.gov
- 15: Tara Fikes tara.fikes@ncdps.gov

Grants Managers

- 6: Lance Sanders lance.sanders@ncdps.gov
- 7: Stacey Anderson-Ebener stacey.anderson-ebener@ncem.org
- 8: Shonda Corbett shonda.corbett@ncdps.gov
- 9: Eric Jefferson eric.jefferson@ncdps.gov
- 10: Stacey Anderson-Ebener stacey.anderson-ebener@ncem.org

Grants Managers

- 1: Barrett Cain barrett.cain@ncdps.gov
- 2: Helen Bunch helen.bunch@ncdps.gov
- 3: Jeff Welker jeffrey.welker@ncdps.gov
- 4: Barbara Johnson barbara.johnson@ncdps.gov
- 5: Thomas Bennett thomas.bennett@ncdps.gov



NCEM Recovery's PA Field Operations Team Regional & County Assignments Detail



NCEM Recovery Chief Todd Wright 919-215-1672	Deputy Recovery Chief Dot Henderson-Bell 919-218-6642	NCEM PA State Operations Lead Mary Glasscock 919-306-8188	State Operations Support Meghan Hicks 512-808-6349	Recovery Legal Counsel Kate Van Tol 984-218-3559		
Willie Mae Cox State Agencies & Final Inspections 984-297-5645	Western Branch Lead - Charmaine George 984-232-1460		Central Branch Lead - Debra Medina 984-218-2084		Eastern Branch Lead - Brian Snell 984-297-5659	
	Western Branch Support: Andrew (AJ) Yowler 512-822-7929		Central Program Support: Stacey Anderson-Ebener 512-822-7946		Eastern Program Support: Rebeca Reyes 512-822-7912	
Charles Edwards Quality Supervisor 919-605-8105	Western Closeout Request Contact: Markiara Staten 984-233-3034		Central Closeout Request Contact: Naomi Johnson 984-500-6589		Eastern Closeout Request Contact: Angel Feimster 984-220-4404	
Angel Durham Program Support 919-817-0557	11: Andrew (AJ) Yowler 512-822-7929	Alleghany, Alexander, Cabarrus, Iredell, Rowan, Stanly, Wilkes	6: Lance Sanders 984-302-0934	Franklin, Granville, Halifax, Northampton, Person, Vance, Warren	1: Barrett Cain 984-222-9995	Camden, Chowan, Currituck, Dare, Gates, Hertford, Pasquotank, Perquimans
Ann Beck Program Support 984-365-0998	12: Michele Faison 984-218-2498	Ashe, Avery, Caldwell, McDowell, Mitchell, Watauga, Yancy	7: Stacey Anderson-Ebener 512-822-7946	Edgecombe, Harnett, Johnston, Nash, Wilson, Wake	2: Helen Bunch 984-500-7131	Beaufort, Bertie, Hyde, Martin, Pitt, Tyrell, Washington
Freda Jones Program Support (984) 222-4625	13: Andy Andrews 984-297-5642	Burke, Catawba, Cleveland, Gaston, Lincoln, Mecklenburg, Union	8: Shonda Corbett 984-218-3385	Anson, Chatham, Lee, Montgomery, Moore, Richmond, Scotland	3: Jeff Welker 984-222-4159	Carteret, Craven, Greene, Lenoir, Pamlico
Brett Boykin-Roach Non-Congregate Sheltering 984-302-0650	14: Tara Fikes 984-222-5188	Buncombe, Cherokee, Graham, Haywood, Madison, Swain	9: Eric Jefferson 984-233-3124	Caswell, Davie, Forsyth, Rockingham, Stokes, Surry, Yadkin	4: Barbara Johnson 919-812-1554	Duplin, Cumberland, Jones, Onslow, Pender, Sampson
	15: Tara Fikes 984-222-5188	Clay, Henderson, Jackson, Macon, Polk, Rutherford, Transylvania	10: Stacey Anderson-Ebener 512-822-7946	Alamance, Davidson, Durham, Guilford, Orange, Randolph	5: Thomas Bennett 984-233-9581	Bladen, Brunswick, Columbus, Hoke, New Hanover, Robeson