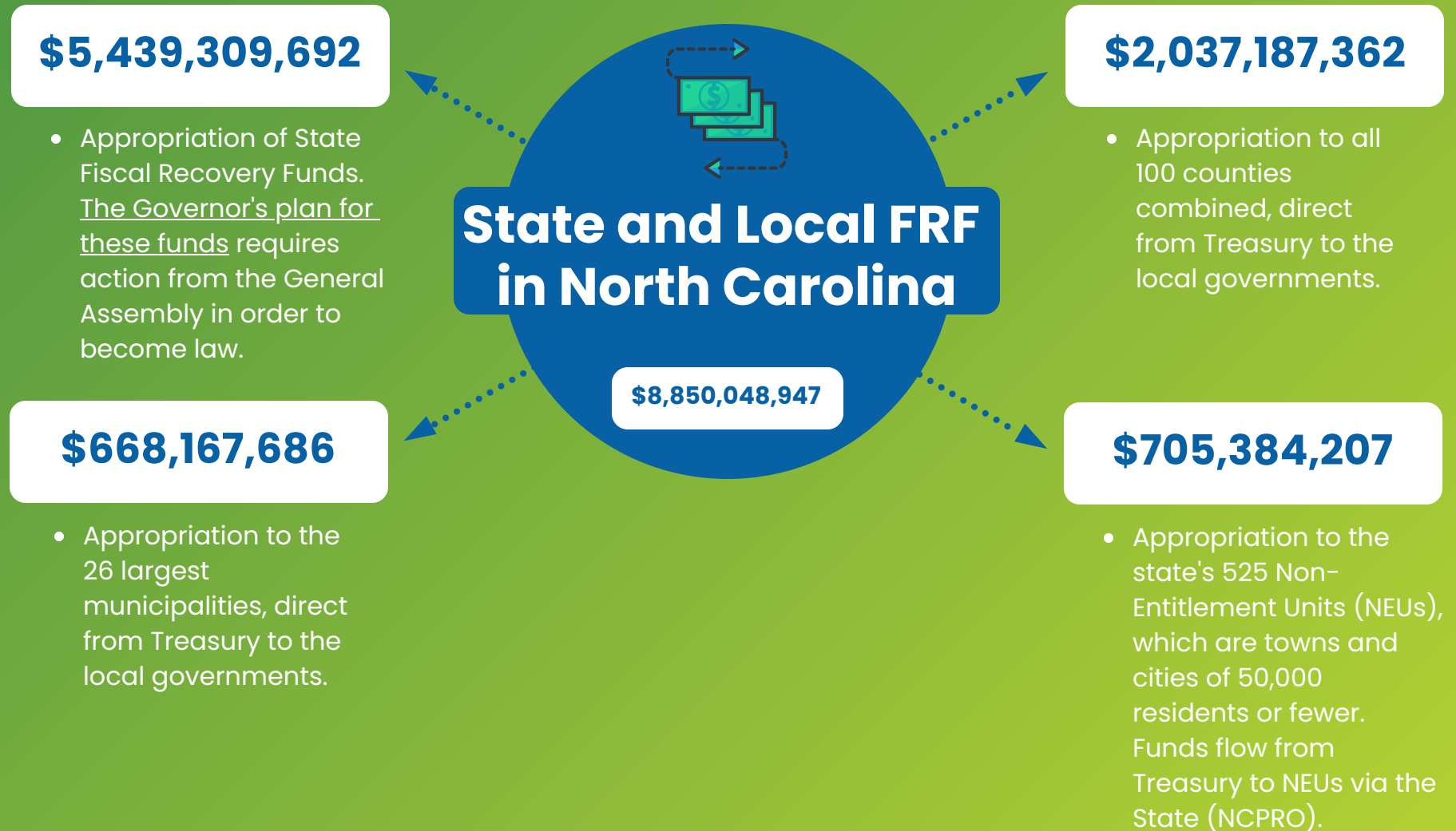


Funding Totals

State and Local Fiscal Recovery Funds



\$5,439,309,692

- Appropriation of State Fiscal Recovery Funds. The Governor's plan for these funds requires action from the General Assembly in order to become law.

\$2,037,187,362

- Appropriation to all 100 counties combined, direct from Treasury to the local governments.

\$668,167,686

- Appropriation to the 26 largest municipalities, direct from Treasury to the local governments.

\$705,384,207

- Appropriation to the state's 525 Non-Entitlement Units (NEUs), which are towns and cities of 50,000 residents or fewer. Funds flow from Treasury to NEUs via the State (NCPRO).