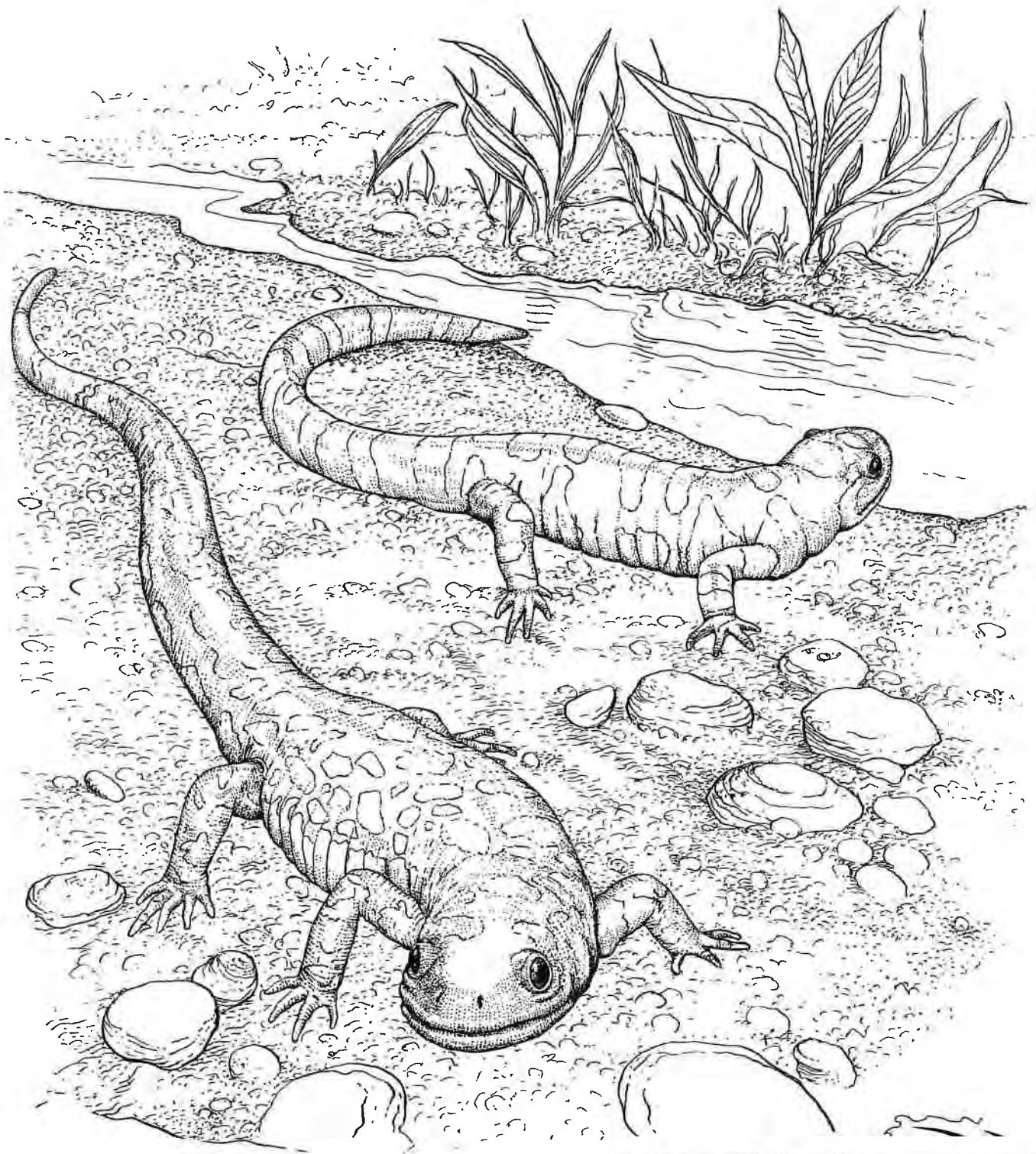


PARC
PARTNERS
IN
AMPHIBIAN AND REPTILE CONSERVATION

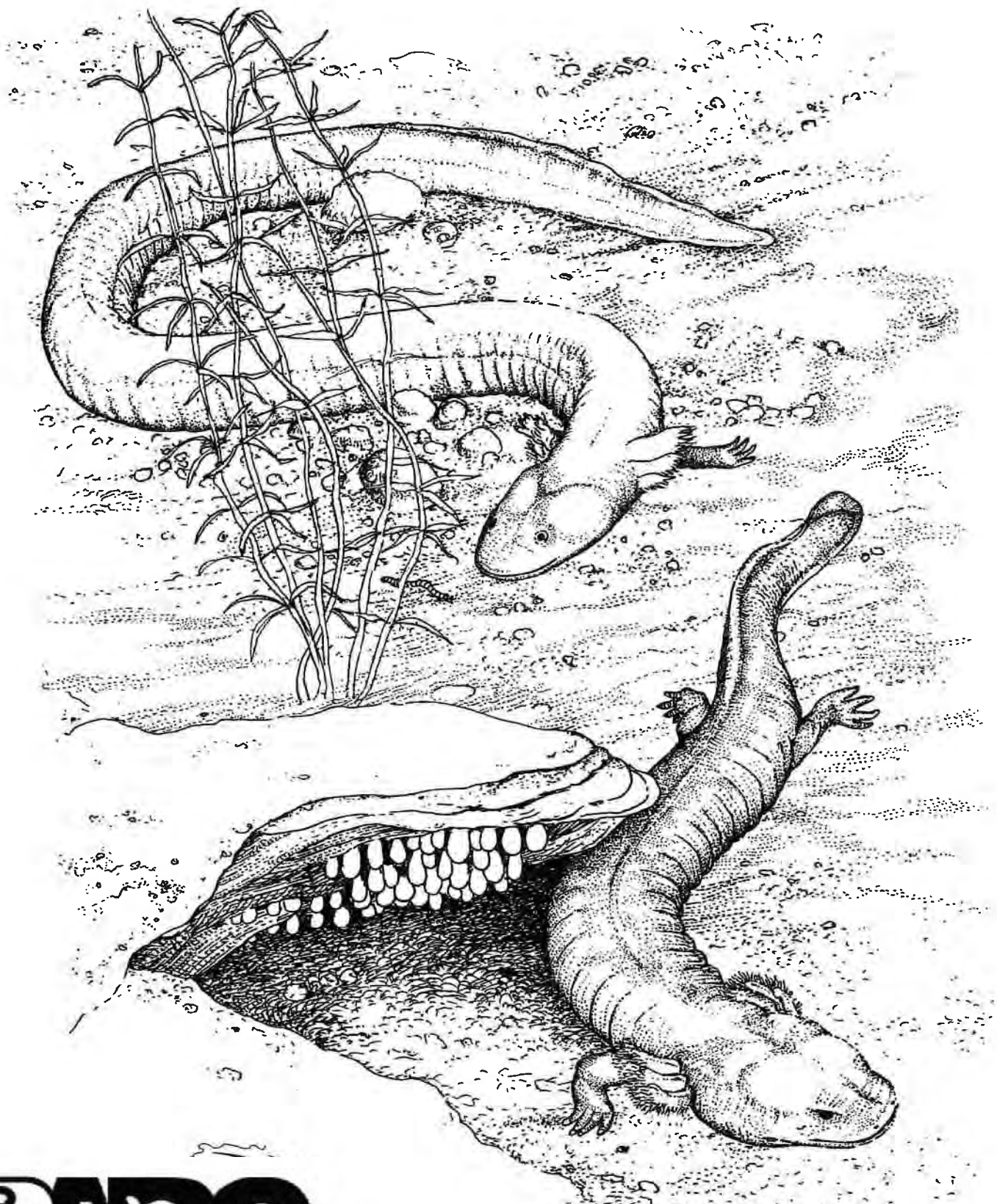


Salamanders might look like lizard, but they are very different. Unlike lizards, they have smooth, slimy skin, no claws, and need to live in moist places.

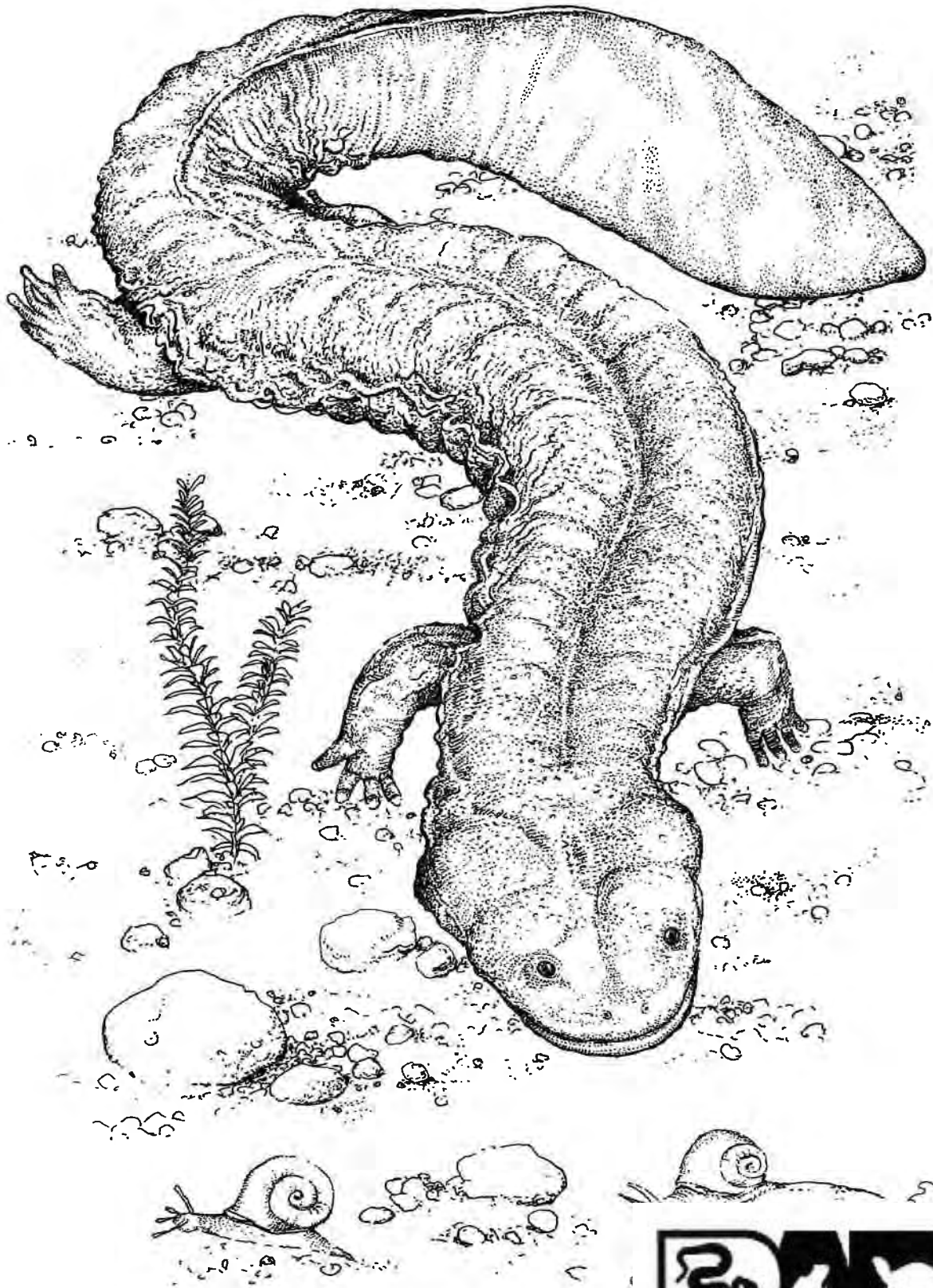




Many salamanders like this Spotted Salamander (top) and Northern Red (bottom) lay their eggs in ponds or springs.



Mudpuppies are aquatic salamanders that keep their feathery gills as adults.



Hellbenders are aquatic salamanders that live in clear, rocky streams. They are also called snot otters or devil dogs.

PARC
PARTNERS
IN
AMPHIBIAN AND REPTILE CONSERVATION