

A Guide to Identifying the Copperhead: Size = 6 - 8 inches at birth; maximum about 48 inches.

NOSTRIL PIT EYE with elliptical pupil



The pits viewed head on



Young have a yellow tail tip.



Head color varies from yellowish to coppery. Note the hourglass shaped bands. Sometimes there are small spots between the bands.



At higher elevations in NC's Mountains, Copperheads tend to be darker and have a distinctly coppery colored head.



Two dark dots normally can be seen on the top of the head. Some harmless species, like the Garter Snake also have these.

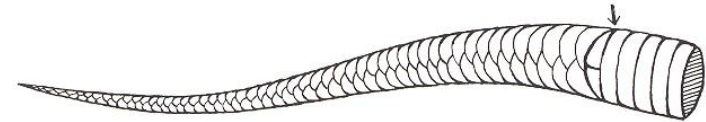


Fig. 1

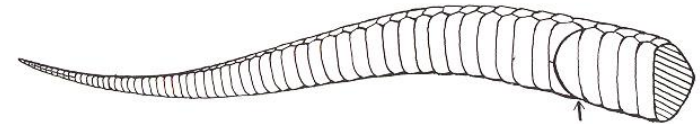


Fig. 2

Fig. 1 = scale pattern under tail of harmless snake.
Fig. 2 = scale pattern under tail of Copperhead.

Hershey's Kisses and Copperhead pattern comparison.



Note the round pupil in the eye of this harmless Red-bellied Water Snake.