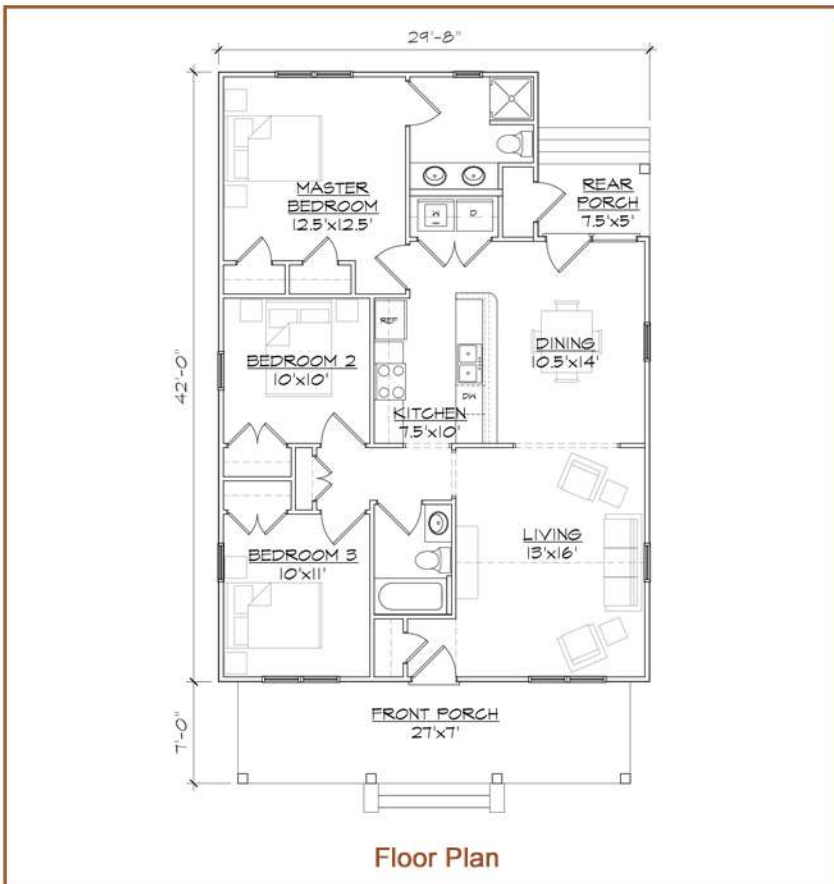


TightLines Designs

creating great places to live



Clarke I



This single story “Triple A” Folk Victorian home of 1159 square feet features a dramatic large open vaulted living room, dining room, a private master bedroom suite located in the rear, and includes a total of three bedrooms, two full bathrooms, a laundry area and a centralized galley kitchen that opens to the dining area. This historically inspired exterior offers a full front porch, a covered rear porch and an exterior storage room.

square footage.	1159 sq ft
bedrooms.	3
bathrooms.	2
width.	29'8"
depth.	49'0"
roof pitch.	6/12 & 8/12



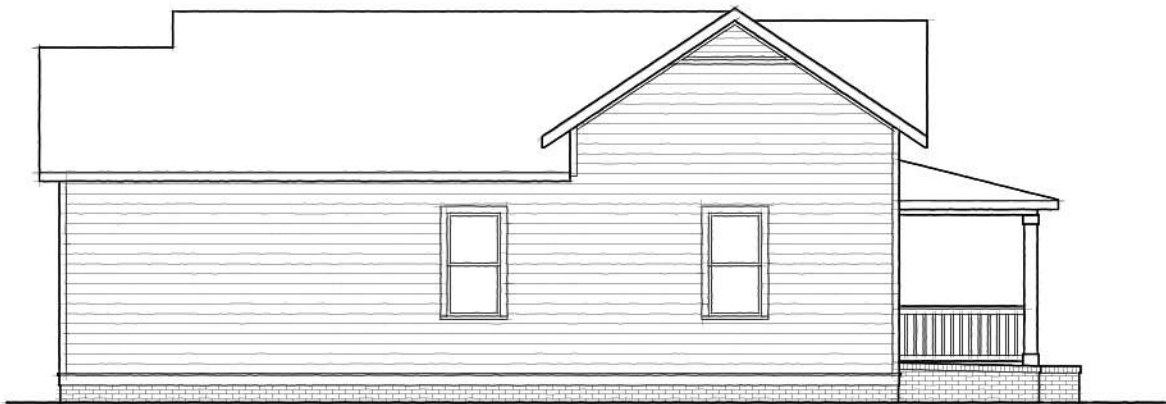
Clarke I



FRONT ELEVATION



RIGHT ELEVATION



LEFT ELEVATION



REAR ELEVATION