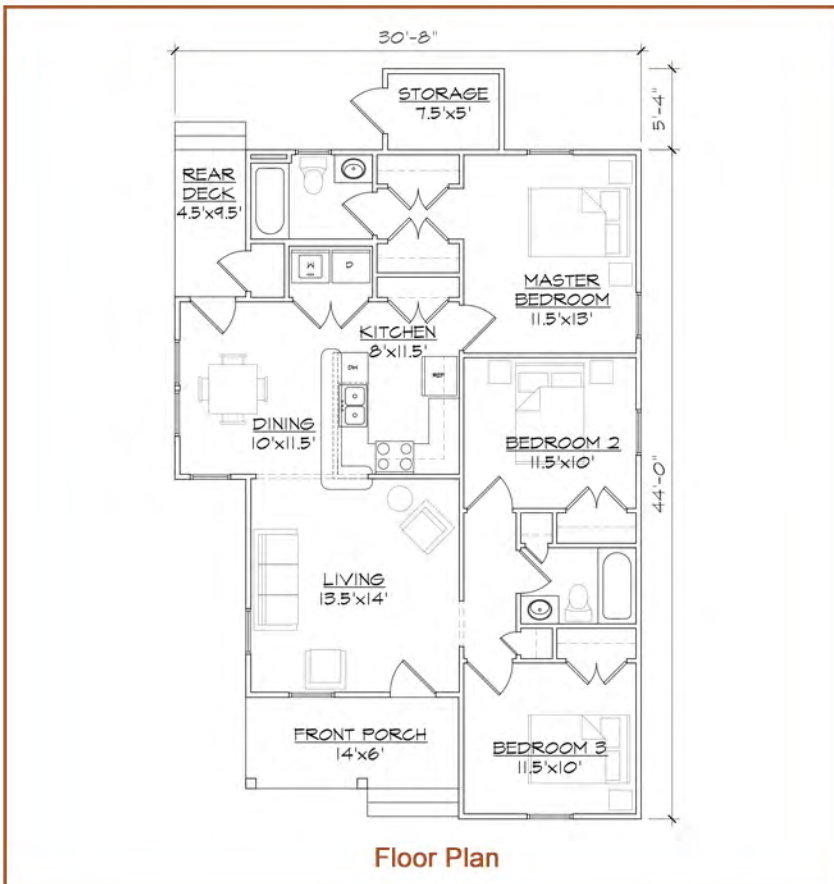


# TightLines Designs

creating great places to live



Whitney I



This single story Folk Victorian style home of 1088 square feet features a spacious living room, separate dining area and a private master bedroom suite with double closets. This open floor plan includes a total of three bedrooms, two full bathrooms, laundry area and centralized U-shaped kitchen with a breakfast bar that opens to the dining room. The historically inspired exterior offers a double gable roof with a side hipped bump out, front porch, rear deck and optional exterior storage room.

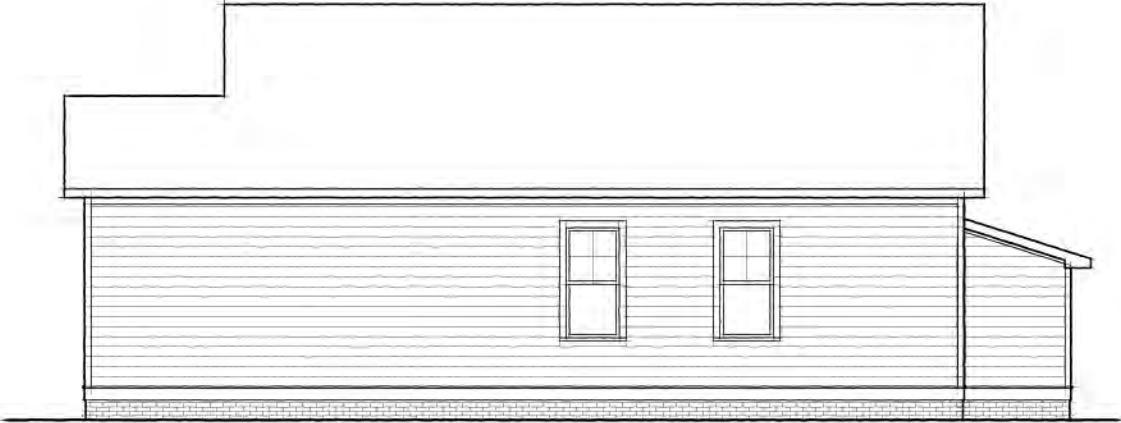
square footage	1088 sq ft
bedrooms	3
bathrooms	2
width	30'8"
depth	44'0"
roof pitch	8/12



# Whitney I



FRONT ELEVATION



RIGHT ELEVATION



LEFT ELEVATION



REAR ELEVATION

