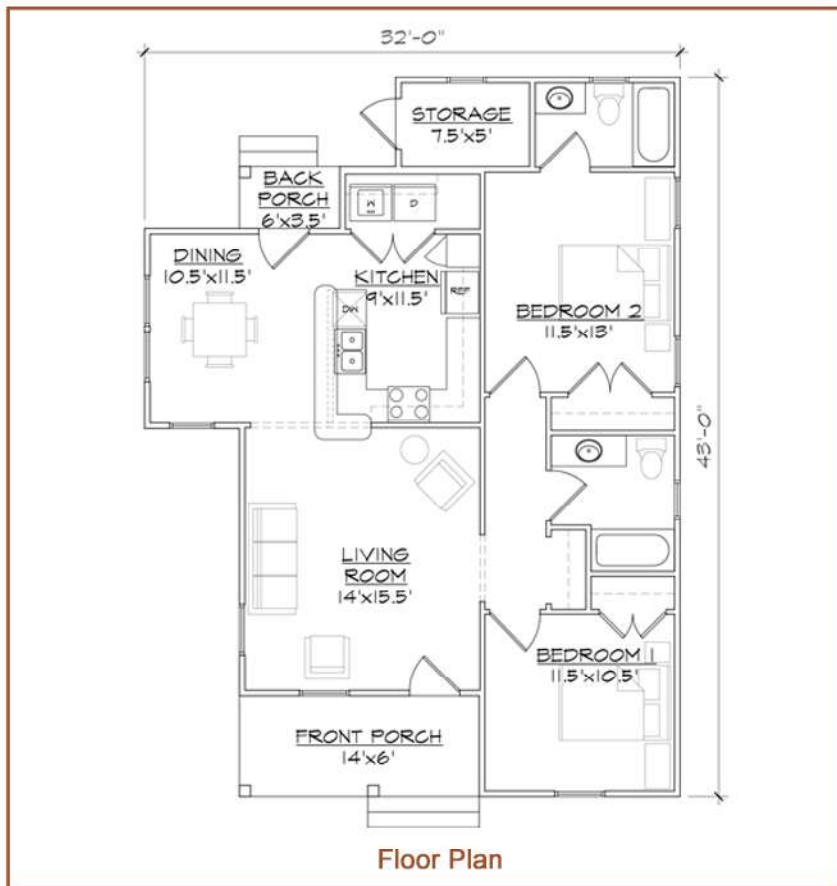


TightLines Designs

creating great places to live



Whitney Two Bedroom/Two Bathroom



This single story Folk Victorian style home of 1000 square feet features a spacious living room and U-shaped kitchen with a breakfast bar that opens to the dining room. This open floor plan includes a total of two bedrooms, two full bathrooms, a laundry closet and ample storage. This historically inspired exterior offers a double gable roof with gable side bump out, covered front and rear porches and exterior storage room.

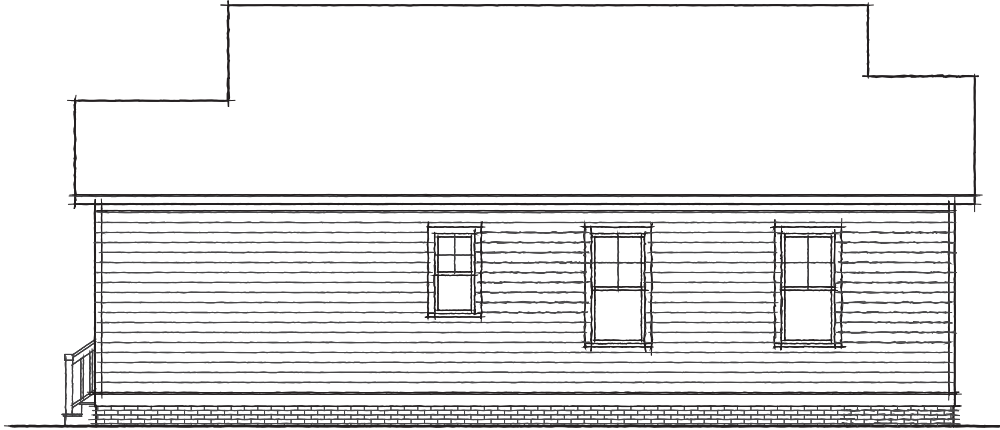
square footage.	1000 sq ft
bedrooms.	2
bathrooms.	2
width.	32'0"
depth.	43'0"
roof pitch.	8/12



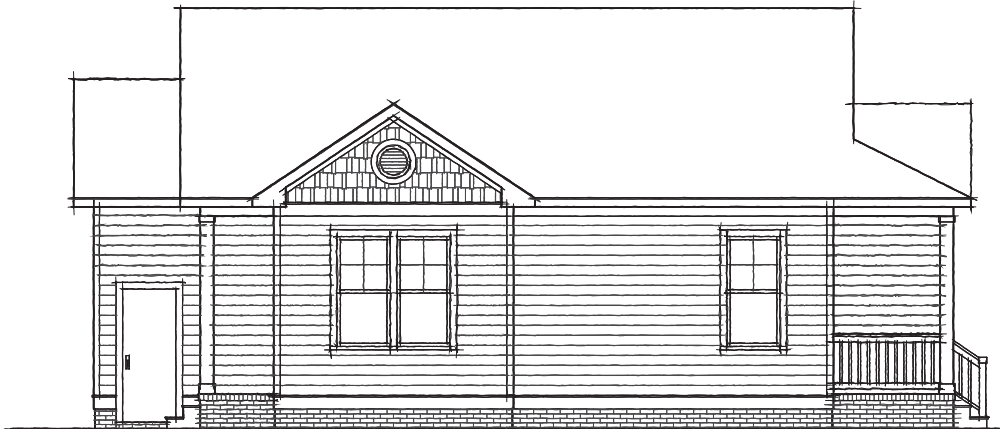
Whitney
2 Bedroom
2 Bathroom



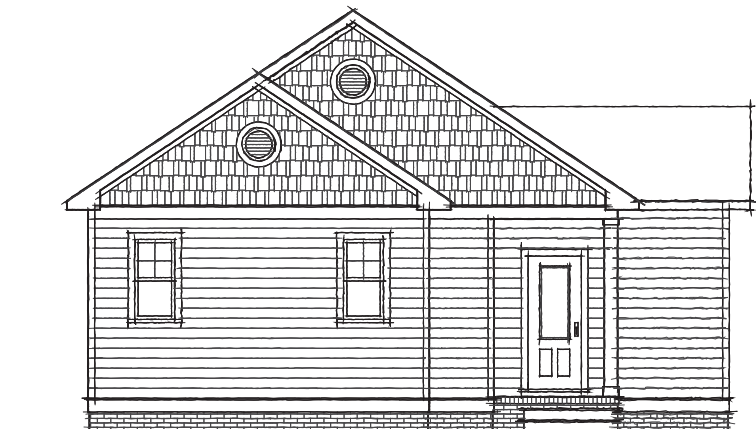
FRONT ELEVATION



RIGHT ELEVATION



LEFT ELEVATION



REAR ELEVATION