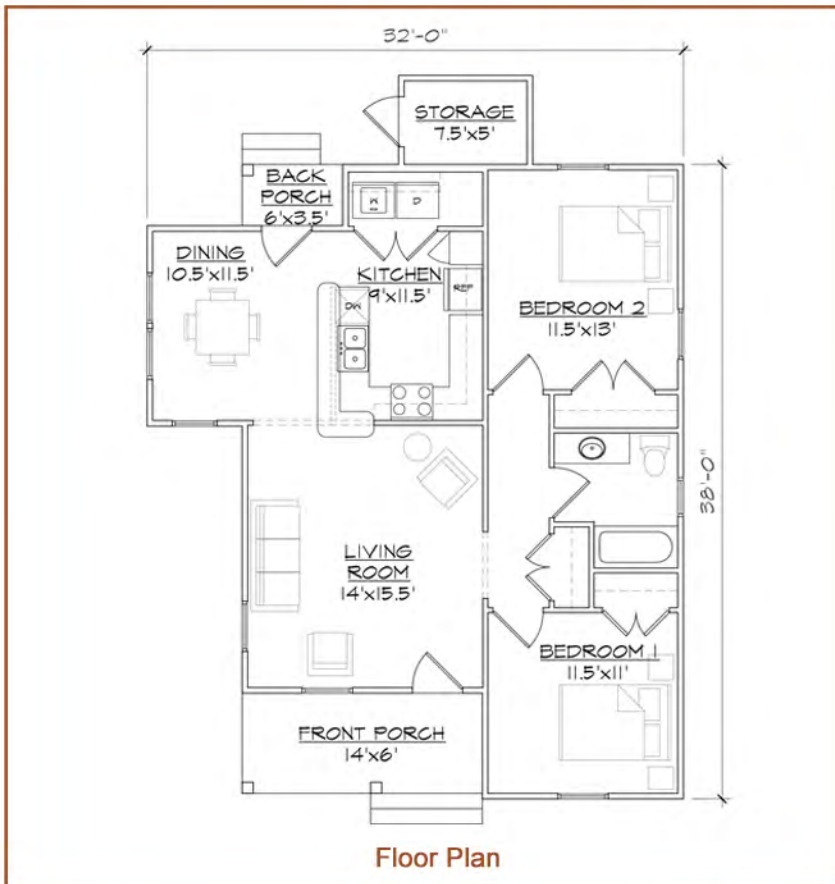


# TightLines Designs

creating great places to live



## Whitney Two Bedroom



This single story Folk Victorian style home of 956 square feet features a spacious living room and U-shaped kitchen with a breakfast bar that opens to the dining room. This open floor plan includes a total of two bedrooms, one full bathroom, a laundry closet and ample storage. This historically inspired exterior offers a double gable roof with hipped side bump out, covered front and rear porches and optional exterior storage room.

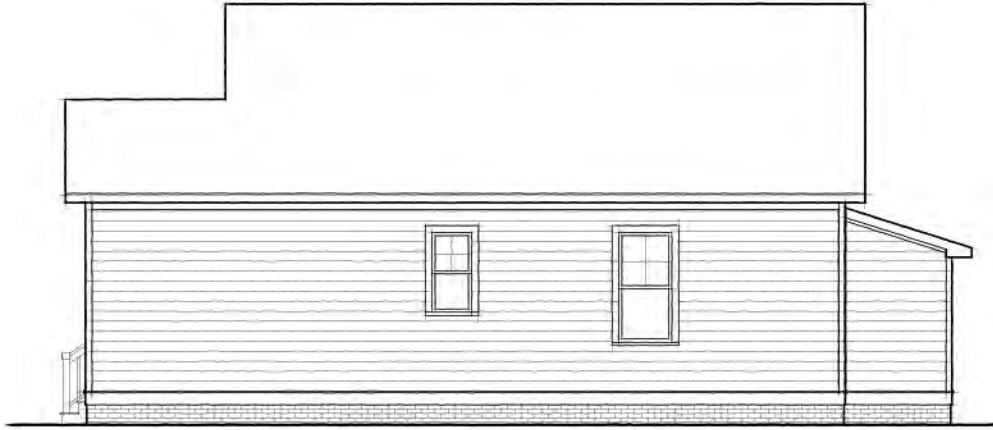
square footage	.956 sq ft
bedrooms	2
bathrooms	1
width	32'0"
depth	38'0"
roof pitch	8/12



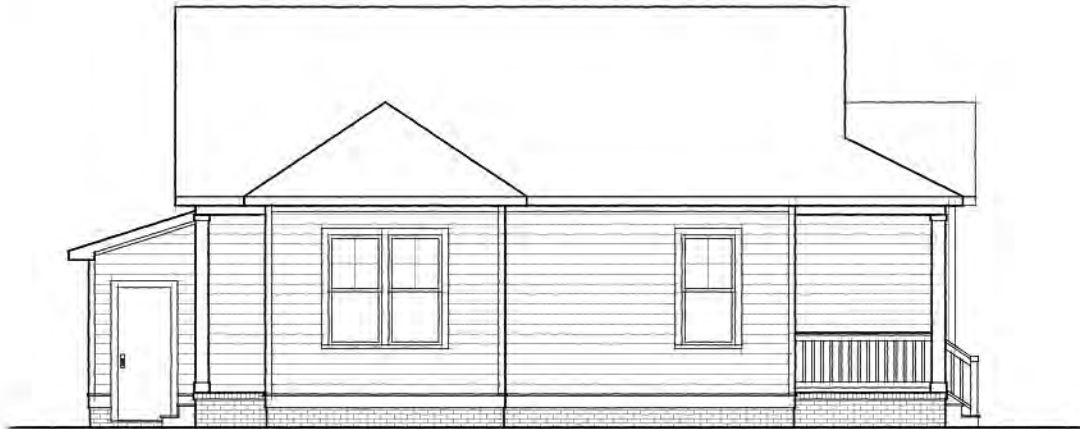
# Whitney 2 Bedroom



FRONT ELEVATION



RIGHT ELEVATION



LEFT ELEVATION



REAR ELEVATION