

Hurricane Matthew Resilient Redevelopment Plan Edgecombe County



May 2017

Version 1.2

CAUTION

CAUTION

CAUTION

CAUTION

CAUTION

Contents

Change Log	iii
Executive Summary	iv
1. Background	1-1
Summary of Hurricane Matthew Storm Damage	1-1
State/Legislative Response	1-1
Resilient Redevelopment Planning	1-2
Scope of the Plan	1-2
Local Participation and Public Engagement	1-3
Data, Assumptions, and Methodologies	1-4
2. County Profile.....	2-1
Demographic Profile	2-1
Population	2-1
Population Change (2000 to 2010)	2-2
Age	2-2
Race and Ethnicity	2-2
Limited English Proficiency	2-3
Poverty	2-3
Low and Moderate Income Individuals	2-3
Median Household Income	2-3
Zero Car Households	2-3
Commuting: Travel Time to Work, Means of Transportation	2-4
Housing Profile	2-5
Economic/Business Profile	2-6
Labor Force	2-6
Major Employers	2-7
Economic Development	2-8
Infrastructure Profile	2-9
Transportation	2-9
Health	2-10
Education	2-10
Water	2-10
Power	2-10
Environmental Profile	2-11
Water Resources	2-11
Natural and Managed Areas	2-11
Biodiversity and Wildlife Habitat	2-11
Parks and Recreation	2-11
Administrative Profile	2-11

3. Storm Impact	3-1
Rainfall Summary.....	3-1
Riverine Flooding Summary.....	3-1
Housing	3-2
Economics / Business / Jobs	3-3
Infrastructure	3-4
Ecosystems / Environment	3-10
4. Strategies for Resilient Redevelopment.....	4-1
Housing Strategies.....	4-3
High Priority Housing Strategies.....	4-3
Medium Priority Housing Strategies.....	4-11
Low Priority Housing Strategies.....	4-15
Economic Development Strategies.....	4-19
High Priority Economic Development Strategies	4-19
Medium Priority Economic Development Strategies.....	4-23
Low Priority Economic Development Strategies.....	4-29
Infrastructure Strategies.....	4-35
High Priority Infrastructure Strategies.....	4-35
Medium Priority Infrastructure Strategies	4-43
Low Priority Infrastructure Strategies.....	4-47
Environmental, Ecosystem and Agricultural Strategies.....	4-49
High Priority Environmental Strategies	4-49
Medium Priority Environmental Strategies.....	4-53
Low Priority Environmental Strategies	4-59
Summary.....	4-63

Change Log

Version	Date	Summary of Changes
1.1	6/15/17	Minor Revisions
1.2	8/30/17	Labor and unemployment data updated

Executive Summary

In October 2016, Hurricane Matthew caused widespread destruction in the Caribbean and up the Eastern Seaboard of the United States. In North Carolina, at least 25 people lost their lives, and 100,000 homes, businesses, and government buildings sustained damage estimated at \$4.8 billion.¹ At the storm's peak, 3,744 individuals fled to 109 shelters across the region. More than 800,000 households lost power and 635 roads were closed, including the major east-west and north-south corridors.

In December 2016, the North Carolina General Assembly established the North Carolina Resilient Redevelopment Planning (NCRRP) initiative as part of the 2016 Disaster Recovery Act (*Session Law 2016-124*). The purpose of the program is to provide a roadmap for community rebuilding and revitalization assistance for the communities that were damaged by the hurricane. The program empowers communities to prepare locally driven recovery plans to identify redevelopment strategies, innovative reconstruction projects, and other needed actions to allow each community not only to survive but also to thrive in an era when natural hazards are increasing in severity and frequency.

The NCRRP consists of planning and implementation phases and is managed through North Carolina Emergency Management.



Figure 1. NCRRP Counties

This document is a snapshot of the current needs of the County regarding holistic recovery and redevelopment. The plan will evolve as the county analyzes the risk to its assets, identifies needs and opportunities, determines the potential costs and benefits of projects, and prioritizes projects. As projects are more fully defined, the potential impact on neighboring communities and the region may lead to modifications.

Implementation of the proposed projects and actions described in this plan is subject to applicable federal, state, and local laws and regulations. Proposed projects or actions may be eligible for state or federal funding, or could be accomplished with municipal, nonprofit, or private investments. However, inclusion of a project or action in this plan does not guarantee that it will be eligible for recovery funding.

¹ State of North Carolina Supplemental Request for Federal Assistance Hurricane Matthew Recovery, <https://governor-new.s3.amazonaws.com/s3fs-public/documents/files/Hurricane%20Matthew%20Relief--2017%20Federal%20Request%20%28002%29.pdf>.

After multiple public meetings, Edgecombe County has identified 30 projects in four pillars: Housing, Economic Development, Infrastructure, and Environment. Details of these projects can be found in Section 4 of this plan.

Pillar	Project/Action Count
Housing	8
Economic Development	8
Infrastructure	7
Environment	7
Grand Total	30

Table 1. Edgecombe County Summary of Projects by Pillar



1. Background

1. Background

Summary of Hurricane Matthew Storm Damage

Hurricane Matthew was an extraordinarily severe and sustained event that brought record-level flooding to many areas in eastern North Carolina's coastal plain, sound, and coastal communities. Hurricane Matthew hit North Carolina on October 8, 2016, as a Category 1 storm. Communities were devastated by this slow-moving storm primarily by widespread rainfall. During a 36-hour period, up to 18 inches of heavy rainfall inundated areas in central and eastern North Carolina.

Riverine flooding began several days after Hurricane Matthew passed and lasted for more than 2 weeks. New rainfall records were set in 17 counties in the Tar, Cape Fear, Cashie, Lumber, and Neuse River watersheds. Entire towns were flooded as water levels throughout eastern North Carolina crested well beyond previously seen stages.

During the peak of the hurricane, 800,000 households lost power and 635 roads were closed, including a section of I-40 West in Johnston County that was closed for 7 days, and sections of I-95 North and South in Robeson and Cumberland Counties that were closed for 10 days.

Approximately 88,000 homes were damaged and 4,424 were completely destroyed. Losses totaled more than \$967 million, representing an economic loss as high as 68% of the damages, or \$659 million, not expected to be covered by insurance or FEMA assistance.

North Carolina Governor McCrory requested FEMA assistance on October 9, 2016, and FEMA subsequently declared a major disaster (DR-4285) for North Carolina on October 10, 2016, for 48 counties encompassing approximately 325 cities, towns, townships, and villages.

Preliminary estimates indicate more than 30,000 businesses suffered physical or economic damage, and 400,000 employees were affected as a result. Hurricane Matthew also had a significant impact on the agriculture and agribusiness economy in eastern North Carolina. The nearly 33,000 agricultural workers and 5,000 agricultural-support workers hit by the storm account for more than half of the state's agriculture and agriculture-support workforce.

Initial economic analysis of the impacts of crop and livestock losses caused by Hurricane Matthew estimated the loss of more than 1,200 jobs and roughly \$10 million in state and local income and sales tax revenue.²

State/Legislative Response

North Carolina's response to Hurricane Matthew included 2,300 swift-water rescues using 79 boats and more than 90 air rescues. North Carolina also deployed over 1,000 National Guard and State Highway Patrol to assist with rescue and sheltering missions. There were 3,744 individuals transported to 109 shelters across central and eastern North Carolina during the storm's peak.

FEMA's disaster declaration made 50 counties eligible for FEMA assistance, 45 of which are eligible for Individual Assistance and Public Assistance and 5 of which are eligible for Public Assistance only.

- There were 81,832 individuals registered for FEMA/state assistance.

² Governor McCrory's Request for Federal Assistance for Hurricane Matthew Recovery, November 14, 2016

- Federal/state financial assistance in the amount of \$92.5 million was approved to help flood survivors recover.
- Small Business Administration (SBA) loans approved for individuals after Hurricane Matthew totaled \$65.6 million.
- SBA loans approved for businesses after Hurricane Matthew totaled \$23.2 million.

After the immediate response period, North Carolina Governor McCrory and the North Carolina General Assembly took the steps summarized below to obtain and allocate long-term funding for Hurricane Matthew.

November 1: The Hurricane Matthew Recovery Committee is established. Preliminary damage assessments are completed, and the State Emergency Response Task Force continues to administer programs and identify needs unmet by existing federal programs.

November 14: Governor McCrory formally submits North Carolina’s request for supplemental federal disaster assistance to the delegation as Congress returns to work.

Late November/Early December: Congress appropriates supplemental disaster assistance for North Carolina. After the supplemental federal disaster recovery assistance package is received, Governor McCrory submits a supplemental state disaster assistance package (House Bill 2) recommendation to the General Assembly and calls a special session. Governor McCrory then signs the Hurricane Matthew Recovery Act to fund disaster recovery efforts.

This supplemental federal assistance was to focus on housing, infrastructure, economic development, and the environment. These four pillars were to be funded through the following programs and agencies: The U.S. Department of Housing and Urban Development’s Community Development Block Grant–Disaster Recovery (CDBG-DR) program, Army Corps of Engineers Operations and Maintenance, the FEMA National Dam Safety Program, the Federal Highway Administration’s Emergency Highway Funding, and the U.S. Department of Agriculture’s Emergency Conservation and Watershed Protection programs.

Resilient Redevelopment Planning

The purpose of the NCRRP initiative is to provide a roadmap for communities in eastern North Carolina to rebuild and revitalize after being damaged by Hurricane Matthew. The program empowers communities to prepare locally driven, resilient redevelopment plans to identify redevelopment strategies, innovative reconstruction projects, and other actions to allow each community not only to survive, but also to thrive in an era when natural hazards are increasing in severity and frequency.

The NCRRP initiative employs a holistic approach to planning that includes four pillars: housing, infrastructure, economic development, and the environment. Redevelopment strategies and reconstruction projects for each of the four pillars is included in each plan.

The NCRRP initiative consists of planning and implementation phases and is managed through North Carolina Emergency Management (NCEM).

Scope of the Plan

This document is a snapshot of the County’s current needs for achieving holistic recovery and redevelopment. The plan will evolve as the County analyzes the risk to its assets, identifies needs and opportunities, determines

the potential costs and benefits of projects, and prioritizes the projects. As projects are more fully defined, the potential impact on neighboring communities and the region may lead to modifications.

Planning objectives are to (1) develop strategic, resilient redevelopment plans and actions, and (2) to define any unmet funding needed to implement such actions after taking into account other funding sources.

The resulting resilient redevelopment plans will be the foundation for any supplemental funding received through Congress, the North Carolina General Assembly, and other funding sources. These plans will also be the basis for the state's Recovery Action Plan, which is required by the U.S. Department of Housing and Urban Development before the state can expend funds received from the CDBG-DR program.

Local Participation and Public Engagement

Stakeholder engagement and public involvement was an essential component of the NCRRP initiative. Four rounds of discovery, analysis, collaboration, and interaction were held with each affected county. Each meeting had two components: an in-depth working session with county officials, subject matter experts, and planners from the affected counties and municipalities; and a public open house. The purpose of each meeting was as follows:

Meeting 1 – Initiated the planning process and validated the existing data pertaining to damage and impacts.

Meeting 2 – NCEM presented draft documentation of resilient redevelopment strategies and received feedback from community leaders and the public.

Meeting 3 – NCEM presented refined resilient redevelopment strategies based on feedback from Meeting 2 and received additional feedback.

Meeting 4 – NCEM presented actions developed during the course of the planning process and allowed the county to rank actions; apply High, Medium, or Low Prioritization; and approve inclusion of the actions in the final plan.

Each of the 50 counties that were declared a major disaster by the President of the United States as a result of Hurricane Matthew under the Stafford Act (P.L. 93-288) participated in the resilient redevelopment planning process. Each municipality in those counties, as well as the five economic development regions that sustained damage from Hurricane Matthew, were also invited to participate. The counties impacted by the storm cover the eastern half of North Carolina and occupy parts of the piedmont, sand hills, and coastal areas of the state.

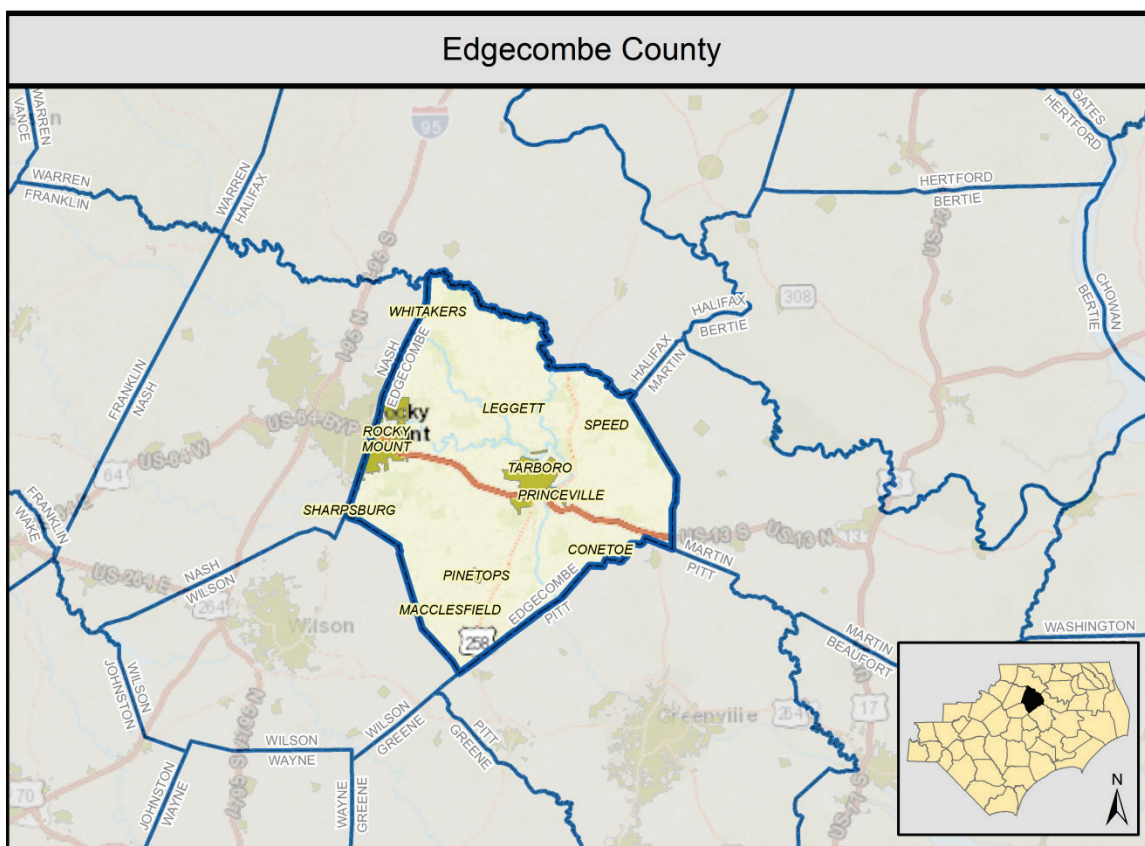


Figure 2. Edgecombe County and Neighboring Counties

Data, Assumptions, and Methodologies

NCEM has assembled a wealth of data, resources, and technical expertise from state agencies, the private sector, and the University of North Carolina system to support the development of innovative best practice strategies.

Implementation of the proposed projects and actions described in this plan is subject to applicable federal, state, and local laws and regulations. Inclusion of a project or action in this plan does not guarantee that it will be eligible for recovery funding. However, proposed projects or actions may be eligible for state or federal funding or could be accomplished with municipal, nonprofit, or private investment.

An aerial photograph showing a residential neighborhood severely affected by flooding. The water is a murky, brownish-yellow color, submerging large areas of the landscape. In the upper half of the image, a large body of water has inundated a wooded area, with only the tops of many trees visible. Below this, a residential street is shown with several houses. The yards and surrounding areas are completely underwater. The houses are mostly two-story structures with light-colored siding and dark roofs. Some houses have their basements or lower floors submerged. The lower half of the image shows a dense forest of green trees, which appears to be less affected by the flooding, though some water is visible at the edges of the wooded area. The overall scene depicts a significant natural disaster impact on a community.

2. County Profile

2. County Profile

Edgecombe County is located just east of I-95. It is comprised of ten census-designated places: Conetoe, Leggett, Macclesfield, Pinetops, Princeville, Rocky Mount, Sharpsburg, Speed, Tarboro, and Whitakers. Its current population is 55,280. This section provides a profile of housing, economics, infrastructure, environment, and administration within Edgecombe County.

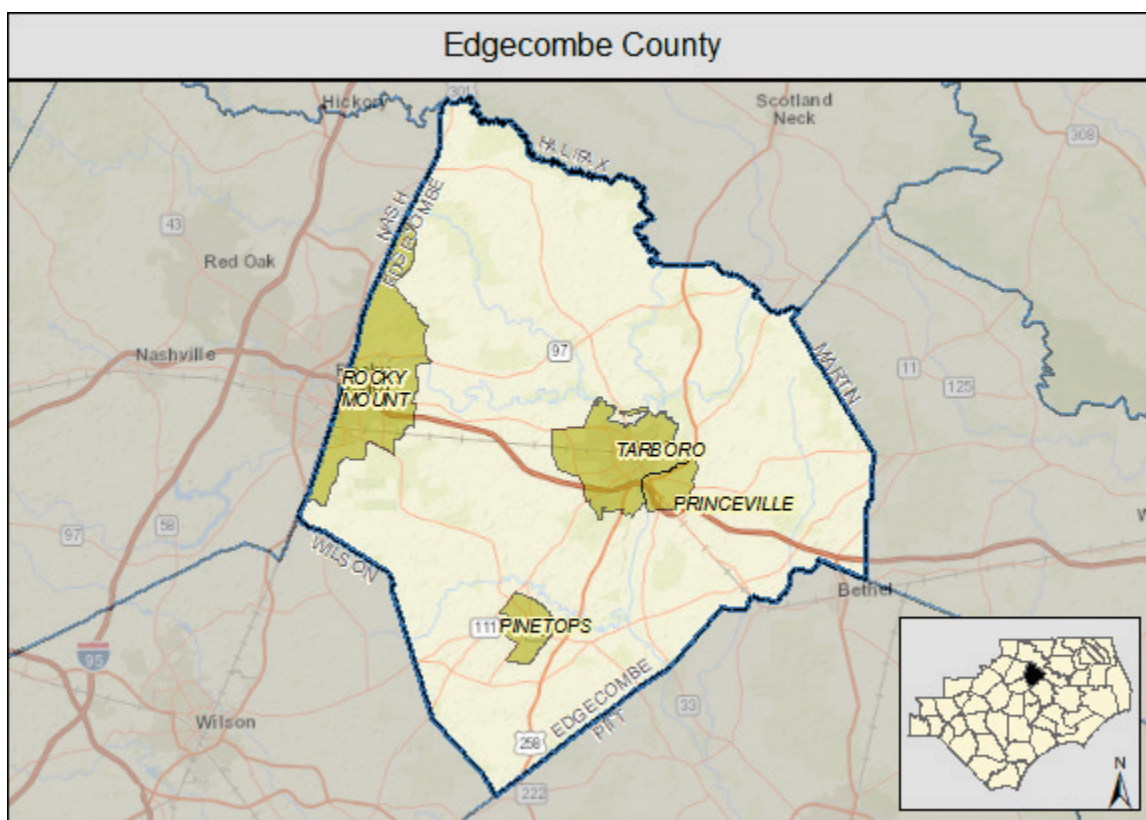


Figure 3. Edgecombe Base Map

Demographic Profile

Demographics for Edgecombe County and census-designated places within the county are summarized and compared to statewide averages in this profile. The demographic data is from the 2000 Census, 2010 Census, and 2011-2015 American Community Survey five-year estimates.

Population

Edgecombe County has a population of 55,280. Rocky Mount is the most populous place within Edgecombe County with a population of 56,642 and Leggett is the least populous place with a population of 38. The total population of Rocky Mount is greater than the county total because Rocky Mount spans Edgecombe and Nash counties.³

3 Source: US Census Bureau, American Community Survey 5-year Estimates (2011-2015), Table B01001, Sex by Age.

Population Change (2000 to 2010)

The Edgecombe County population remained relatively the same between the 2000 and 2010 Census. In 2000 the population was 55,606 and in 2010 it was 56,552. The population increased by 946 people, or 2 percent. In comparison, North Carolina grew by 19 percent from 8,049,313 people in 2000 to 9,535,483 in 2010.⁴

Age

The median age in Edgecombe County is 40, which is two years younger than the North Carolina median age of 42. Within Edgecombe County, the Speed population has the oldest median age, 54, and the Sharpsburg population has the youngest median age, 33.³

Race and Ethnicity

Edgecombe County is mostly African American (57 percent) and White (39 percent) with other races constituting the remaining 4 percent. In comparison, North Carolina is 70 percent White, 22 percent African American, 1 percent American Indian and Alaska Native, 3 percent Asian, less than 1 percent Native Hawaiian/Pacific Islander, 3 percent Some Other Race, and 2 percent Two or More Races. Refer to the table below.⁵

Within Edgecombe County, all places except Tarboro are majority African American. In Princeville, the African American population is 96 percent. The African American population in Tarboro is 45 percent and White population is 48 percent.

The Latino population in Edgecombe County is 4 percent compared to 9 percent for North Carolina. Within Edgecombe County, Macclesfield has the largest Latino population (11 percent) while Conetoe, Leggett, Pinetops, Princeville, and Speed do not have Latino populations according to the census data. Rocky Mount has a Latino population of 3 percent.

Geography	White	Black or African American	American Indian and Alaska Native Alone	Asian	Native Hawaiian/ Pacific Islander	Some Other Race	Two or More Races	Total Non-White
Conetoe	40.1%	58.0%	0.0%	0.0%	0.0%	0.0%	2.0%	59.9%
Leggett	23.7%	76.3%	0.0%	0.0%	0.0%	0.0%	0.0%	76.3%
Macclesfield	57.3%	29.4%	0.0%	1.4%	0.0%	11.3%	0.6%	42.7%
Pinetops	34.5%	65.5%	0.0%	0.0%	0.0%	0.0%	0.0%	65.5%
Princeville	3.2%	96.1%	0.0%	0.0%	0.0%	0.0%	0.8%	96.8%
Rocky Mount	31.0%	63.4%	0.5%	1.1%	0.1%	1.6%	2.3%	69.0%
Sharpsburg	32.5%	56.7%	0.9%	0.0%	0.0%	1.6%	8.3%	67.5%
Speed	24.2%	75.8%	0.0%	0.0%	0.0%	0.0%	0.0%	75.8%
Tarboro	47.7%	45.0%	0.3%	0.0%	0.5%	4.4%	2.2%	52.3%
Whitakers	25.4%	64.7%	0.6%	0.0%	0.0%	0.0%	9.4%	74.6%
Edgecombe County	38.8%	56.5%	0.3%	0.1%	0.1%	2.2%	1.9%	61.2%
North Carolina	69.5%	21.5%	1.2%	2.5%	0.1%	3.0%	2.4%	30.5%

Table 2. Edgecombe County Race and Ethnicity

4 Source: Minnesota Population Center. National Historical Geographic Information System: Version 11.0 [Database]. Minneapolis: University of Minnesota. 2016. <http://doi.org/10.18128/D050.V11.0>. Census 2000/Census 2010 Time Series Tables Geographically Standardized

5 Source: US Census Bureau, American Community Survey 5-year Estimates (2011-2015), Table B02001, Race and Table B03002, Hispanic or Latino Origin by Race.

Limited English Proficiency

Limited English Proficiency (LEP) is defined as populations 18 years or older that speak English less than very well. In Edgecombe County, most of the individuals identified as LEP speak Spanish while others speak Indo-Euro, Asian/Pacific, or other languages. Similarly, the primary language group for LEP individuals in North Carolina is Spanish. Within Edgecombe County, Rocky Mount has the largest LEP population. The primary language group for LEP populations in Rocky Mount, Macclesfield, and Tarboro is Spanish. The other places do not have LEP populations according to census data.⁶

Poverty

In Edgecombe County, 26 percent of the population is below the poverty level compared to 17 percent of the North Carolina population. Within Edgecombe County, Conetoe, Pinetops, Princeville, Sharpsburg, and Whitakers have percentages of the population below the poverty level that exceed the county average.⁷

Low and Moderate Income Individuals

In Edgecombe County, 50 percent of the population is classified as low and moderate income (LMI) individuals based on the US Department of Housing and Urban Development's definition. In comparison, 39 percent of the North Carolina population is classified as LMI.⁸

Median Household Income

The median household income of the population 25 to 64 years old is \$35,000 in Edgecombe County and \$53,000 in North Carolina. Leggett has the highest median household income for this age group, \$71,000, and Pinetops has the lowest: \$24,000. Median household income was not available for Conetoe or Macclesfield.⁹

Zero Car Households¹⁰

In Edgecombe County, 12 percent of households do not have a vehicle available compared to 7 percent of North Carolina households. Within Edgecombe County, Princeville has the highest percentage of households without access to a vehicle, 20 percent, while Leggett has the lowest percentage: 0 percent. Not having a car available directly impacts the ability to evacuate in an emergency. The residents of Princeville would have the greatest need for assistance in the event of an evacuation.

6 Source: US Census Bureau, American Community Survey 5-year Estimates (2011-2015), Table B16004, Age by Language Spoken at Home by Ability to Speak English for the Population 5 Years and Over.

7 Source: US Census Bureau, American Community Survey 5-year Estimates (2011-2015), Table C17002, Ratio of Income to Poverty Level in the Past 12 Months.

8 Source: US Department of Housing and Urban Development, Estimate of Low and Moderate Income Individuals, <https://www.hudexchange.info/programs/acs-low-mod-summary-data/acs-low-mod-summary-data-block-groups-places/>

9 Source: US Census Bureau, American Community Survey 5-year Estimates (2011-2015), Table B19094, Median Household Income in the Past 12 Months.

10 Source: US Census Bureau, American Community Survey 5-year Estimates (2011-2015), Table B25044, Tenure by Vehicles Available.

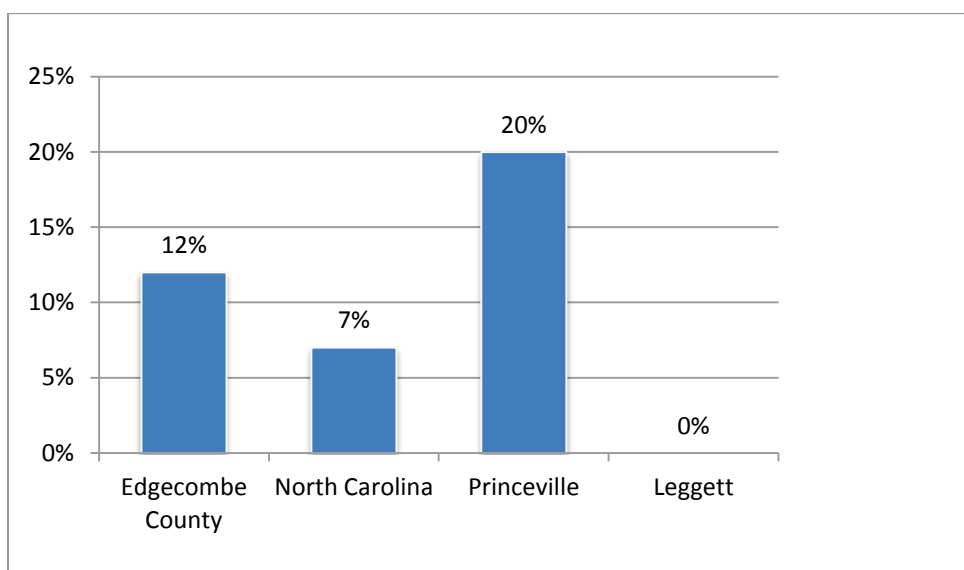


Figure 4. Zero Car Households by Percentage

Commuting: Travel Time to Work, Means of Transportation¹¹

The majority of Edgecombe County residents commute alone to work by vehicle, 83 percent, which is similar to North Carolina average of 81 percent. Within Edgecombe County, Speed has the largest percentage of commuters commuting alone, 100 percent, and Whitakers has the least: 73 percent.

Rocky Mount has the largest percentage of residents commuting by public transportation: 1 percent, which is the same for North Carolina commuters. A greater percentage of Conetoe, Pinetops, Rocky Mount, Sharpsburg, and Whitaker residents commute by walking, bike, or motorcycle than the North Carolina average of 2 percent.

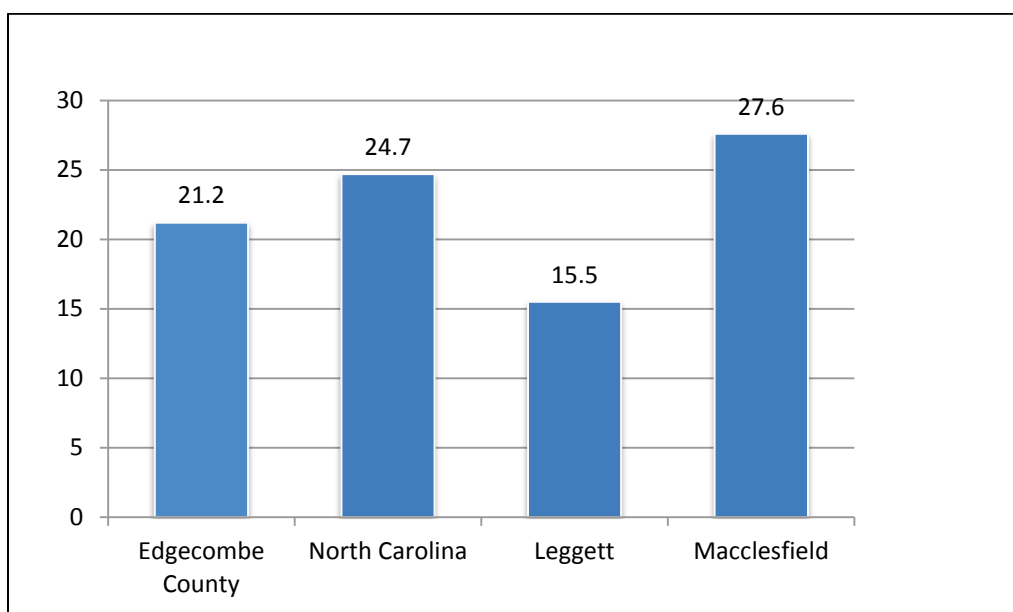


Figure 5. Mean Commute Time to Work in Minutes

¹¹ Source: US Census Bureau, American Community Survey 5-year Estimates (2011-2015), Table B08301, Means of Transportation to Work and Table GCT0801, Mean Travel Time to Work of Workers 16 Years and Over Who Did Not Work at Home (Minutes).

Housing Profile¹²

Edgecombe County has approximately 25,000 housing units, 63 percent of which are single-family homes, 17 percent multi-family units, and 20 percent manufactured housing.

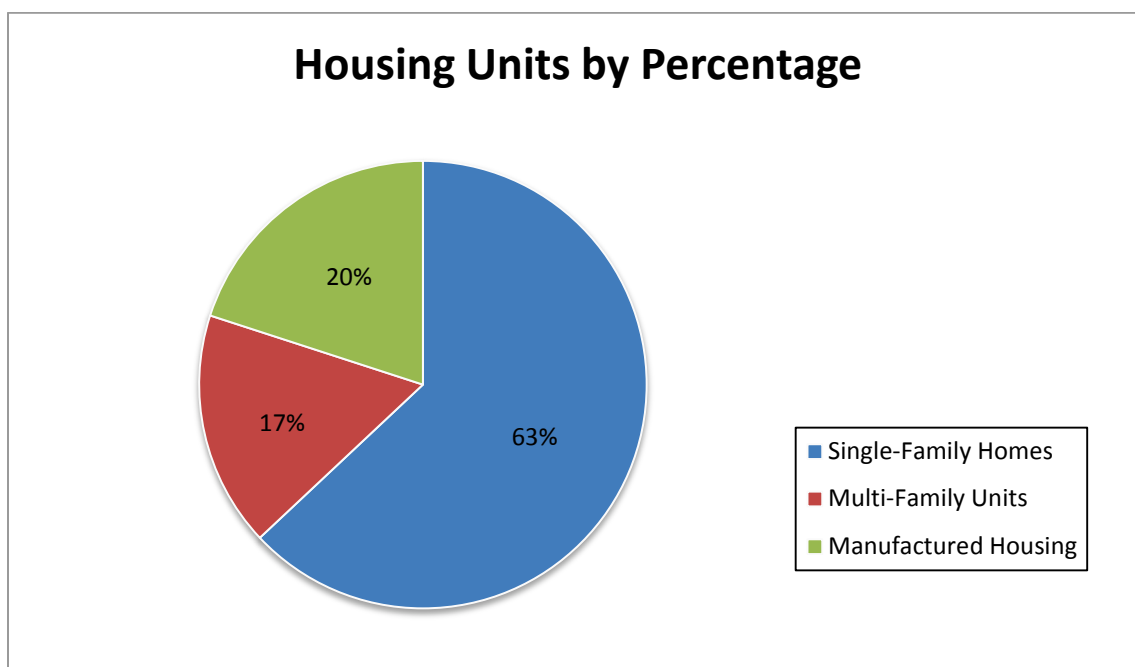


Figure 6. Housing Units by Percentage

In Edgecombe County 15 percent of housing units are vacant, which is the same percentage for North Carolina. Within Edgecombe County, Pinetops has the largest percentage of vacant housing units, 20 percent, while Tarboro has the least: 10 percent.

Of the occupied housing units, 60 percent are owner-occupied compared to 65 percent in North Carolina; 40 percent are renter-occupied compared to 35 percent in North Carolina.

The median housing value in Edgecombe County is \$82,000. In comparison, the median housing value in North Carolina is \$140,000. Within Edgecombe County, Rocky Mount has the highest median housing value: \$106,000. Speed has the lowest median housing value: \$61,000.

According to the National Housing Preservation Database, Edgecombe County has 1,744 affordable housing units. Most of the affordable housing is located within Rocky Mount. Other units are located in Tarboro and Princeville.

¹² Sources: US Census Bureau, American Community Survey 5-year Estimates (2011-2015), Table B25002, Occupancy Status; Table B25003, Tenure; Table B25024 Units in Structure; Table B25077, Median Value (Dollars) - National Housing Preservation Database.

Economic/Business Profile

Edgecombe County has historically focused on agriculture, an industry that remains a primary economic driver today. However, the county has added jobs in other industries both related to and separate from agriculture, including logistics, advanced manufacturing, food processing, plastics, and electronics.¹³

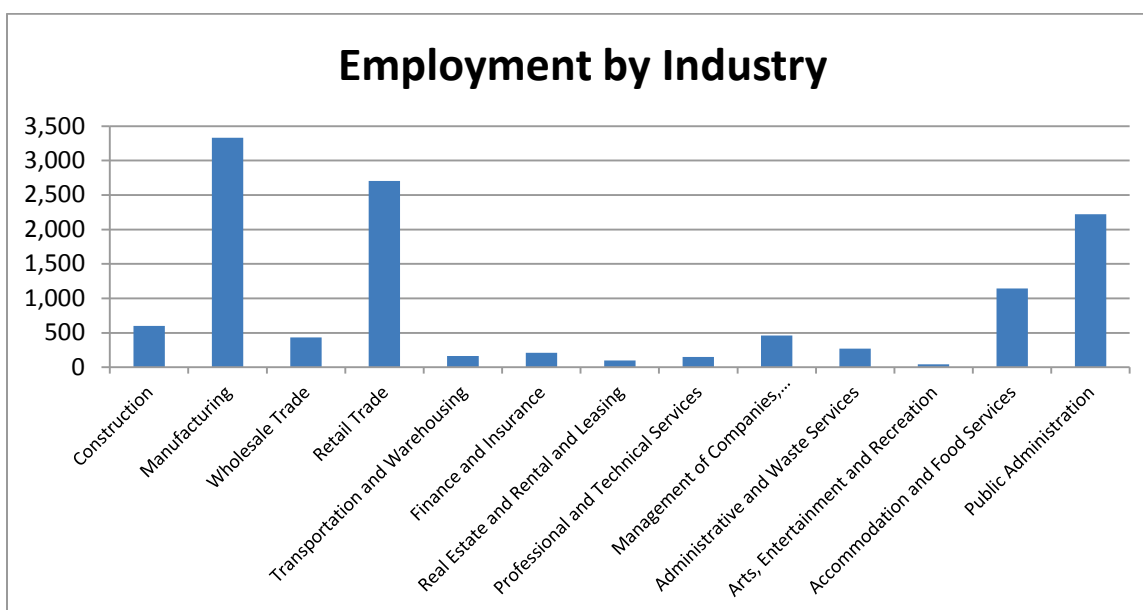


Figure 7. Employment by Industry

According to the US Census Bureau's Longitudinal-Employer Household Dynamics Program, the largest concentrations of jobs within Edgecombe County are in Rocky Mount, Tarboro, and Princeville.¹⁴

Labor Force

According to the local area unemployment statistics (LAUS) from the Labor and Economic Analysis Division (LEAD) for the unadjusted data for all periods in 2016, the civilian labor force population of Edgecombe County is 22,849.¹⁵ Within Edgecombe County, Leggett has the largest percentage of residents 16 years or over in the labor force, 72 percent, while Whitakers has the smallest: 50 percent.¹⁶

The civilian unemployment rate in Edgecombe County is 8.6 percent. In comparison, the North Carolina civilian unemployment rate is 5.1 percent.¹⁵ Within Edgecombe County, Leggett has the smallest civilian unemployment rate at 5 percent while Princeville has the largest: 24 percent.¹⁶

13 Source: AccessNC – North Carolina Department of Commerce, April 2017:
<http://accessnc.nccommerce.com/DemoGraphicsReports/pdfs/countyProfile/NC/37065.pdf>

14 Source: US Census Bureau Longitudinal-Employer Household Dynamics Program

15 Source: Civilian Population and Unemployment Rate - Labor and Economic Division (LEAD) of North Carolina Department of Commerce – Local Area Unemployment Statistics <http://d4.nccommerce.com/LausSelection.aspx>

16 Source: US Census Bureau, American Community Survey 5-year Estimates (2011-2015), Table B23025, Employment Status For The Population 16 Years And Over

Major Employers

The top ten employers in Edgecombe County¹⁷ represent the manufacturing, public administration, education and health service industries, and are listed in order of total employees.

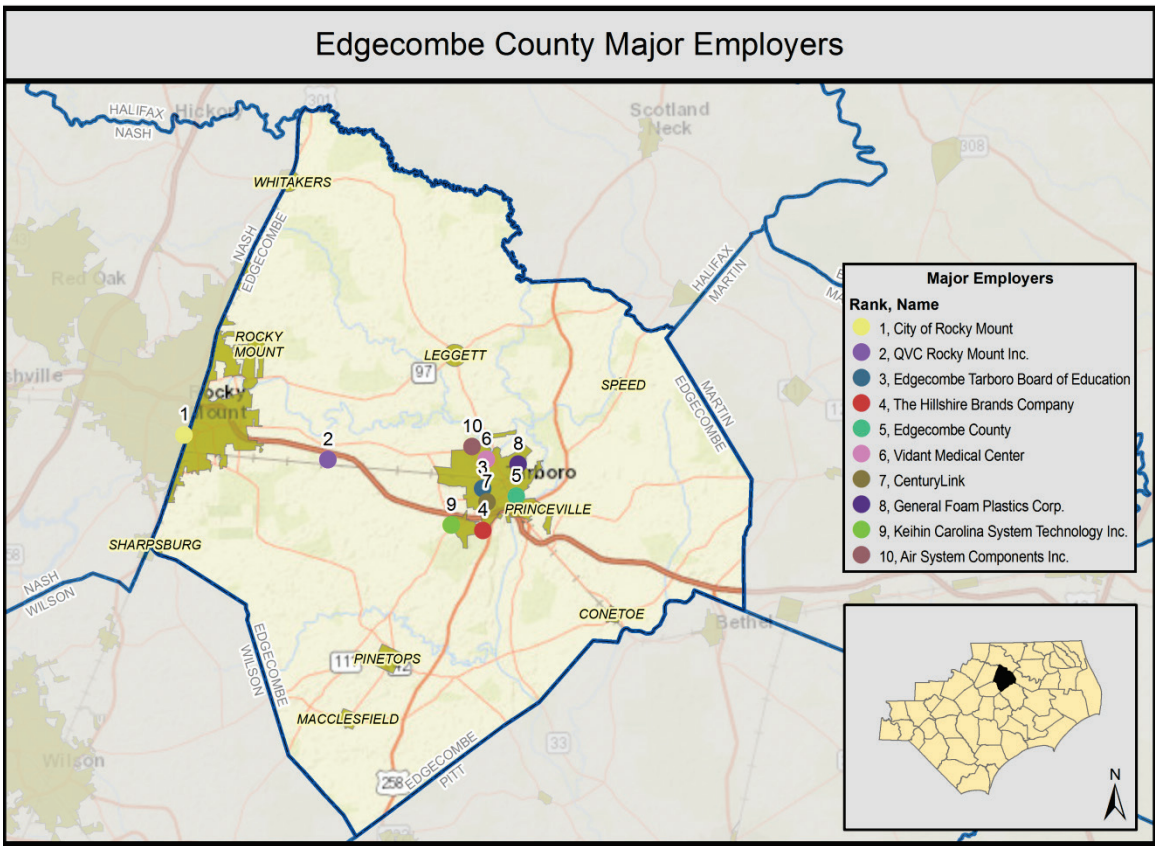


Figure 8. Major Employers by Number of Employees

17 Sources: NC Department of Commerce

Economic Development¹⁸

Edgecombe County has a department of economic development committed to industrial recruitment and expansion, entrepreneurship, and small business development. Edgecombe County is a member of the Carolinas Gateway Partnership, a collaborative effort between Edgecombe and Nash counties to increase economic development. In addition, the Rocky Mount/Edgecombe Community Development Corporation also promotes economic development in the region.

Edgecombe County has a prospectus that describes the “largest shovel-ready mega-site in North Carolina,” the Kingsboro CSX Select Site. It is a 1,449-acre site located off of US 64 and with adjacent CSX rail access. The “Select Site” designation indicates that land use issues have been addressed, making the site ready for development.

The Edgecombe County Business/Industrial Incubator (ECBII) is a 40,000 square foot facility that has the goal of providing space and services to small businesses and technology companies. Tenants include the North Carolina Department of Revenue Tax Assistance Call Center, the Connectinc Call Center, the North Carolina Department of Revenue Service Center Office, and the Rocky Mount-Edgecombe Community Development Corporation (RMECDC) Small Business Development and Resource Center. It also includes a 5,500 square foot conference and training center.

The Edgecombe Community College with campuses in Rocky Mount and Tarboro, offers a Small Business Center devoted to developing long-term strategic partnerships with business and industry leaders and assisting in small business start-ups and expansions.

Visit North Carolina, a unit of the public-private organization contracted to lead North Carolina's marketing programs, estimates that in 2015, Edgecombe County had \$56 million in tourism expenditures, resulting in 990,000 in local tax receipts. This amount has increased over the last 5 years—by 8 percent from 2011 to 2015.

¹⁸ Sources: Edgecombe County Department of Economic Development, Rocky Mount/Edgecombe Community Development Corporation, Edgecombe Community College, and Visit North Carolina

Infrastructure Profile

Transportation, health, education, water, and power infrastructure are summarized for Edgecombe County in the sections that follow.

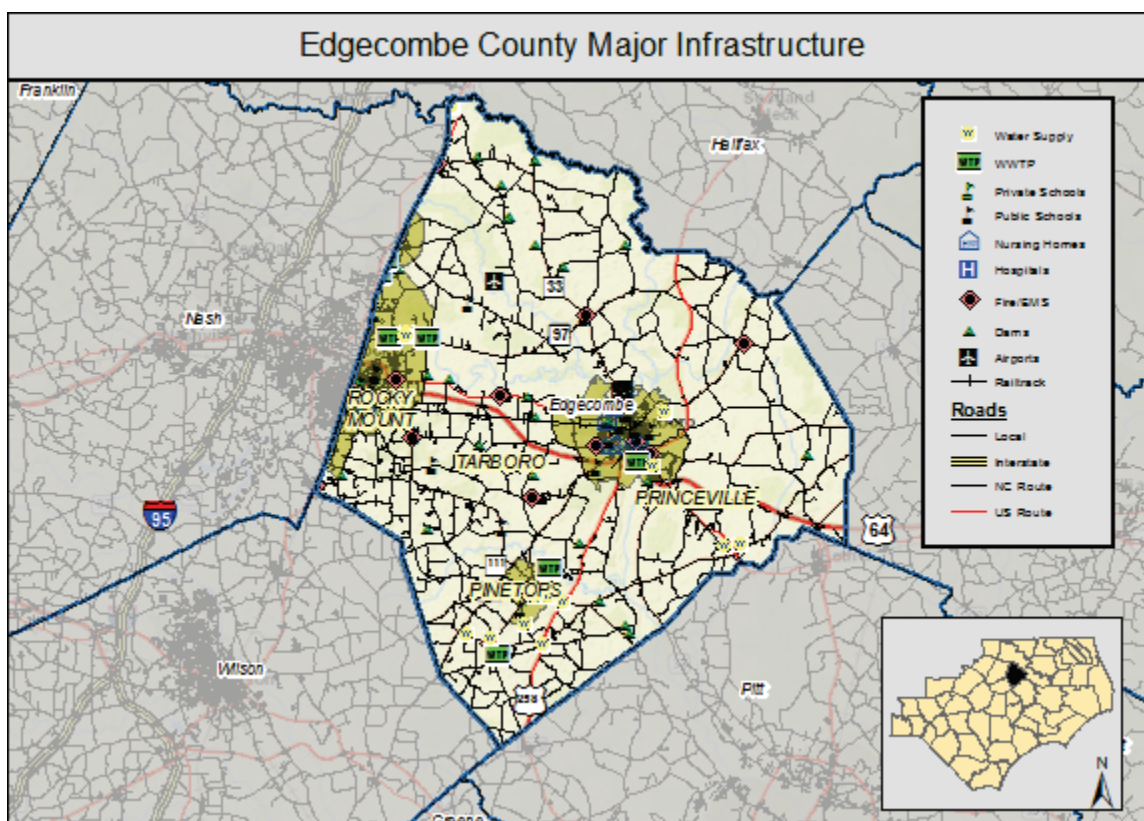


Figure 9. Edgecombe County Major Infrastructure

Transportation

Edgecombe County's multi-modal transportation assets include rail, air, and road access. US Highway 64 directly connects the county with Interstate 95, which as the US eastern seaboard's major north-south thoroughfare, connects the county with major cities and communities across the eastern seaboard. US 64 also connects the area with the Outer Banks beach communities approximately 120 miles to the east and to the Raleigh metro area approximately 60 miles to the west.

The county also hosts the Tarboro-Edgecombe Airport, a general aviation facility with a 4,000-foot paved and lighted runway. The Rocky Mount-Wilson Regional Airport (RWI), located in adjacent Nash County, has a 7,100-foot paved runway with instrument landing system. The closest commercial passenger service is provided by Raleigh-Durham International (RDU).

Though the county has no port facilities, it is approximately 130 miles from the port at Morehead City, and between 140 and 150 miles from the port of Wilmington in North Carolina and the Virginia Ports of the Hampton Roads, Virginia area.

The area is serviced by CSX for freight rail. Amtrak passenger service is available in Rocky Mount, NC in adjacent Nash County.

Health

Edgecombe County is serviced by Vidant Edgecombe Hospital, a 117-bed acute care facility in Tarboro. The hospital has a same day surgery center, critical care unit, birthing center, chronic heart failure clinic, level III intermediate care nursery, cancer center, orthopedics, rehabilitation, pain care, and 24-hour emergency department.

Vidant also operates a family medical clinic, Vidant Family Medicine-Pinetops, in Pinetops, south of Tarboro.

Education¹⁹

Public education is provided by the Edgecombe County Public School district, which offers education to pre-K through 12th grade. As of the 2014-2015 school year, the county had a total of 6,016 students in 14 schools. There are five elementary schools, 4 high schools, including an early-college high school offering “year 13”, and one “global academy” serving students from K through 8.

The County also has a community college, Edgecombe Community College (ECC), which has two locations: one in Tarboro with 120 acres and 11 buildings and one in Rocky Mount, consisting of three buildings on one city block. ECC educates approximately 13,000 students annually for either two-year degree programs or certificate, diploma, and continuing education programs. In the 2015-2016 academic year, the majority of students (9,082) were continuing education. Of the curriculum students pursuing two-year degrees, diplomas, or certificates, 60 percent in fall of 2016 were part-time. ECC recently added a Biotechnology and Medical Simulation Center at its Rocky Mount campus. The center includes a simulated hospital environment for nursing and other allied healthcare instruction.

As a part of the North Carolina Community College System, ECC is able to provide customized workforce development programs through the NCWorks Customized Training Program.

Water

Drinking water for Edgecombe County comes from a surface water source in the Tar River and is provided by the county, City of Rocky Mount, or Town of Tarboro. The County provides water through agreements with the City of Rocky Mount and the Town of Tarboro. The County instituted a public water system after it was classified by the state in 2002 as one of several counties in a designated “capacity use area” that was over-using its groundwater aquifer. Wastewater treatment is provided at plants in Maccslefield, Pinetops, Rocky Mount, and Tarboro²⁰.

Power

Electric service is provided to Edgecombe County by the Edgecombe-Martin County Electric Membership Cooperative.

There are several solar farms located within Edgecombe County along US 64. These power plants have a net summer capacity between 1 and 80 megawatts, with the largest located in Conetoe. There is a coal-fired power plant located in Edgecombe County, north of Rocky Mount. It has a capacity of 115 megawatts²¹.

¹⁹ Sources: Edgecombe County Public Schools and Edgecombe Community College

²⁰ Sources: NC Division of Water Resources, Local Water Supply Plans

²¹ Source: US Department of Energy, US Energy Mapping System

Environmental Profile

Water resources, natural areas, managed areas, biodiversity, wildlife habitat, and recreation are summarized for Edgecombe County in the sections that follow.

Water Resources

The Tar River flows east from Rocky Mount to Tarboro, and then south towards Greenville. Wetlands are present along the Tar River and its tributaries. The most common wetland type in Edgecombe County is freshwater forested/shrub wetland²².

Natural and Managed Areas

According to the NC Natural Heritage Program, there are natural areas of exceptional and very high value in Edgecombe County. Much of the Tar River, Swift Creek, and Fishing Creek are rated as exceptional, the highest rating. The Tar River floodplain is rated as very high. The Swift Creek Swamp Forest is rated as moderate. The Fishing Creek floodplain and Cokey Swamp are rated as general.

There are several managed areas under state ownership within Edgecombe County. Managed areas are properties and easements where natural resource conservation is one of the current primary management goals, or are of conservation interest. The Lower Fishing Creek Game Land north of Leggett is a dedicated nature preserve, the highest managed area designation. Other managed areas in the county include the Upper Coastal Plain Research Station near the Cokey Swamp and multiple Conservation Reserve Enhancement Program easements along streams.²²

Biodiversity and Wildlife Habitat

The NC Natural Heritage Program produces a biodiversity and wildlife habitat assessment for the state. According to this assessment, areas with the highest rating for biodiversity and wildlife habitat are along the Tar River and its tributaries. These areas mostly rank as a 10, which is the highest possible score. Portions of the floodplain further from the waterbody rank lower. Other areas of the county rank 1 to 9. Much of the county is unrated.²²

Parks and Recreation

The county's primary public recreation facility is the Indian Lake Sports Complex in Tarboro, a multi-million dollar multi-sport complex that holds tournaments as well as league play. It is owned and maintained by the Town of Tarboro Parks and Recreation Department and has one regulation baseball field, four regulation softball fields, two soccer fields, four tennis courts, and a playground.

The Town of Tarboro also has a 15-acre town common, the nation's second oldest legislated town common.²³

Administrative Profile

The administrative capabilities of Edgecombe County and the municipalities within the County are discussed in great detail within Section 4 of the N.E.W. Regional Hazard Mitigation Plan 2015-2020. The assessment evaluates the capabilities of the County and municipalities to implement mitigation actions across the areas of administrative and technical capabilities, planning and regulatory capabilities, financial capabilities, educational

²² Source: NC Natural Heritage Program

²³ Sources: Town of Tarboro Parks and Recreation Department

and outreach capabilities and legal and political capabilities. Many more details about the capabilities of Edgecombe County and the municipalities can be found in that document.

In terms of administrative capabilities, the county has staff and plans, policies and procedures in place, however its capacity has been taxed due to the ongoing recovery activities related to Hurricane Matthew. Edgecombe County has Emergency Services and Planning departments with the capacities to assist in implementing some of the resilience strategies proposed in this plan. Some of the other indicators of capability for the County include the following: Land Development Plan, Unified Development Ordinance, Subdivision Regulations, Floodplain Management Ordinance, and Stormwater Ordinance Standards.. These plans, policies and standards help ensure that new development in the County will be done in a responsible manner and in non-hazardous areas.

The City of Rocky Mount and Town of Tarboro have Planning departments that would be able to assist with implementing the strategies in this plan as well. Their capabilities may be considered to have “moderate” to “moderate-high” capabilities. For example, both participate in the Community Rating System which indicates their willingness to go above and beyond the minimum standard of the NFIP. Smaller communities and towns within Edgecombe County have what would be considered “limited” capabilities and will likely need additional assistance in the administration and implementation of projects due to their limited staff capacity.

An aerial photograph showing a residential neighborhood severely impacted by flooding. The water is a murky, brownish-yellow color, submerging large areas of the landscape. Numerous houses with grey and blue roofs are visible, some partially submerged. A network of roads crisscrosses the area, with some sections completely underwater. Dense green trees are scattered throughout, many of which are isolated in the floodwater. The overall scene depicts significant environmental damage and displacement.

3. Storm Impact

3. Storm Impact

Rainfall Summary

Hurricane Matthew officially made landfall as a Category 1 storm southeast of McClellanville, South Carolina early on October 8, 2016. The track and speed of the storm resulted in nearly two days of heavy precipitation over much of North Carolina that caused major flooding in parts of the eastern Piedmont and Coastal Plain. The storm produced widespread rainfall of 3-8 inches in the central regions of North Carolina and 8 to more than 15 inches in parts of eastern North Carolina. A number of locations received all-time record, one-day rainfall amounts. Many locations in the Coastal Plain of North Carolina had received above normal rainfall in the month of September leading to wet antecedent conditions prior to Hurricane Matthew. Total rainfall depth for Edgecombe County is highlighted graphically in the figure below.

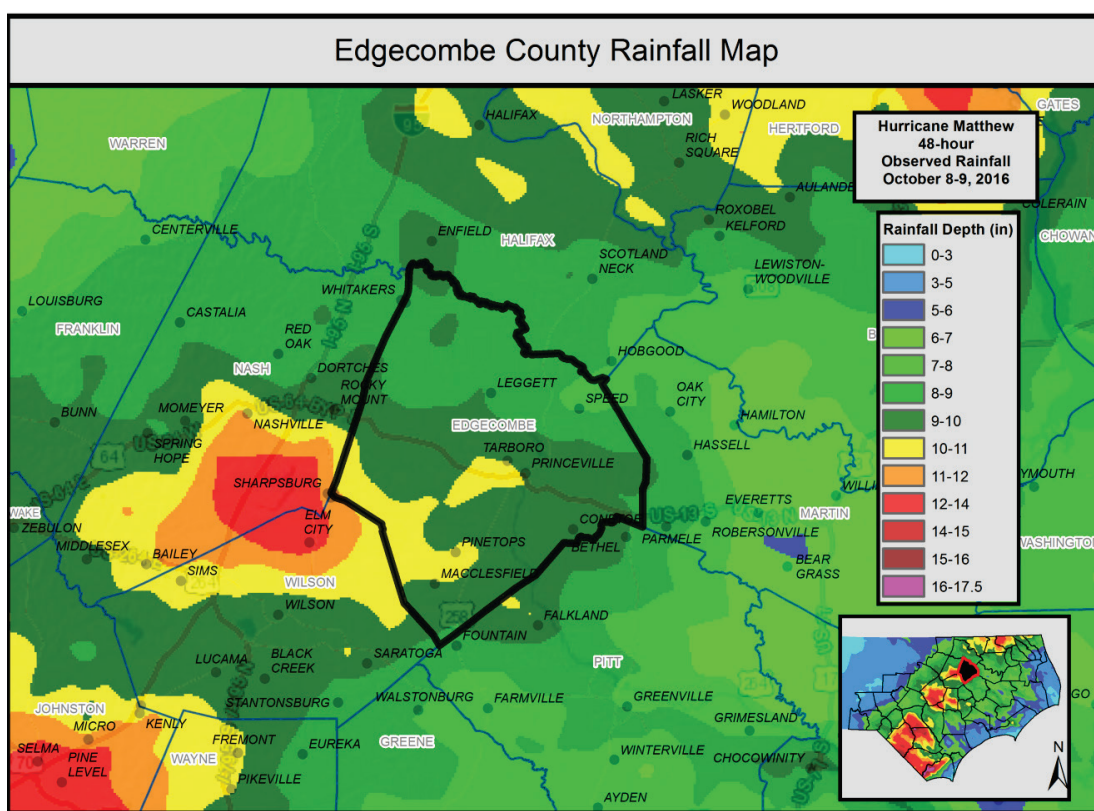


Figure 10. 48-hour Observed Rainfall Depth (October 8-9, 2016)

Riverine Flooding Summary

USGS documented stream gage data in the report “Preliminary Peak Stage and Streamflow Data at Selected Stream gaging Stations in North Carolina and South Carolina for Flooding Following Hurricane Matthew, October 2016”. Stream gage data from the USGS report for Edgecombe County and nearby gages is summarized in Table 3.

USGS Gage	County	River Name and Location	Drainage Area (sq mi)	Peak Matthew Elevation (ft)	Previous Record (ft)
02083500	Edgecombe	Tar River at Tarboro, NC	2183.0	36.29	41.51
02082585	Edgecombe	Tar River at NC 97 at Rocky Mount, NC	925.0	28.73	31.66

Table 3. Edgecombe County USGS Stream gage Data

The USGS data validates what was experienced in the county. Details of impacts categorized under housing, economic, infrastructure, and environment are included in the following sub-sections.

Housing

According to Individual Assistance claims as of March 2017, there were 3,139 impacted houses in Edgecombe County because of Hurricane Matthew. In addition, 271 buyout applications have been submitted in Edgecombe County. Residents in Princeville alone submitted 178 applications, while residents in Tarboro submitted 21. The remaining 72 applications come from the rest of the county. It should be noted that additional claims from Hurricane Matthew might still be pending, so this number may not reflect the final claims data from the event. This also does not take into account other historic impacts to the county or other areas of concern for flooding that may not have occurred during this storm. For example, some affected housing during Hurricane Floyd remains vacant in the Tarboro and Princeville areas. With that in mind, the planning team attempted to take a comprehensive look at both Hurricane Matthew impacts and any historic impacts that local officials felt would validate areas that should be considered at high risk for future flooding.

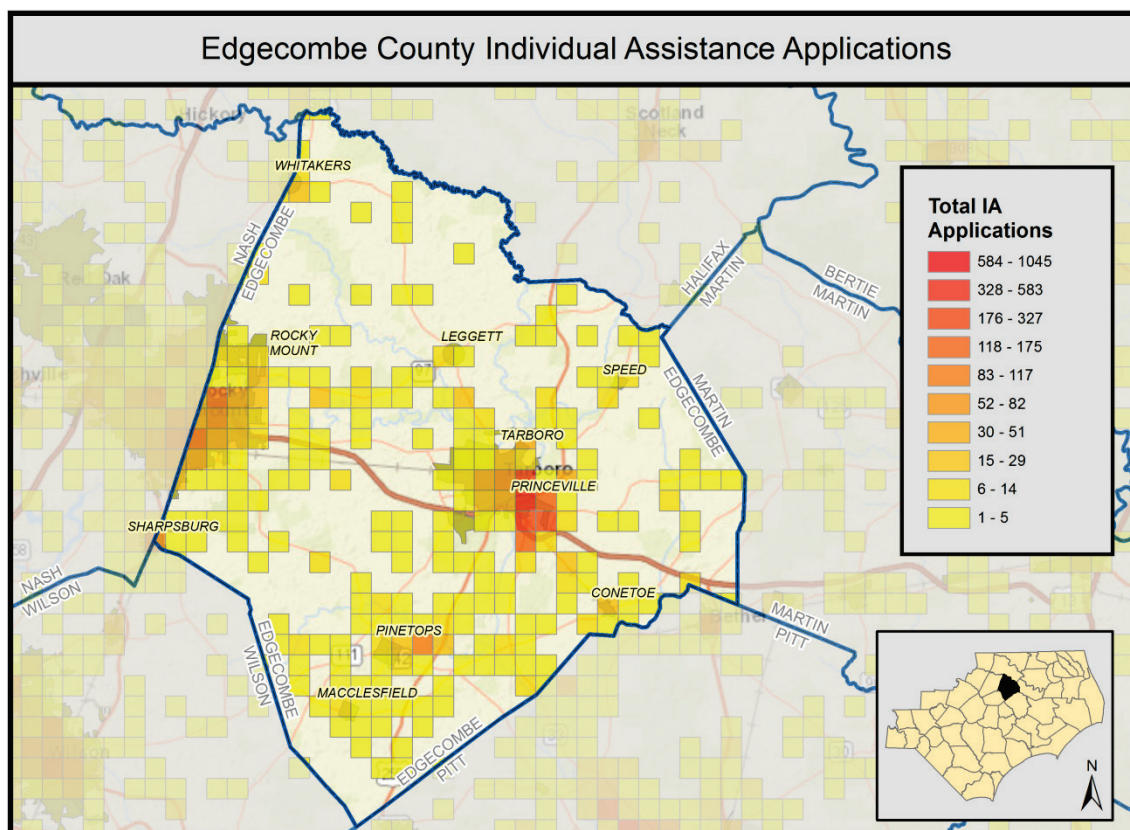


Figure 11. Edgecombe County IA Applications by Area

The bullets below summarize some of the major impacts to housing identified by local officials in multiple meetings.

- Homes Flooded from Hurricane Matthew:** Princeville, Tarboro, Rocky Mount, Pinetops, and the residential neighborhood at Route 97 and New Hope Church Road are communities in flood-prone areas that flooded during Hurricane Matthew. Based on historic flooding information, these communities include a significant amount of repetitive loss properties dating back to Hurricane Floyd in 1999. Many homes remain vacant or abandoned, especially in Princeville. Mitigation options, such as home

elevations are prohibitive to many residents due to the costs. Homes, therefore, remain vulnerable to flood events resulting in repetitive losses.

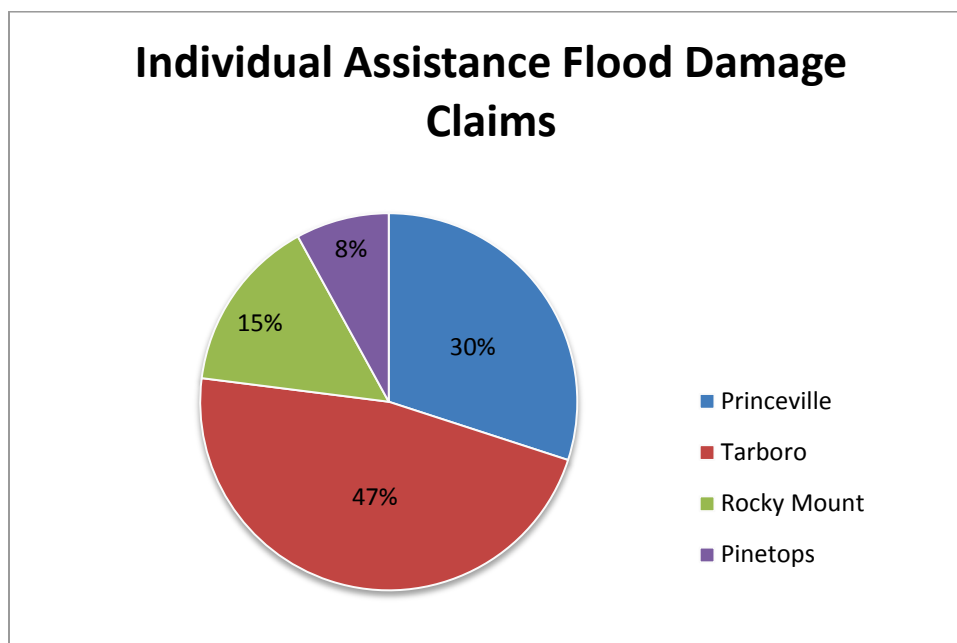


Figure 12. IA Flood Damage Claims by Area

- **Homes At-Risk of Future Flooding:** Residential neighborhoods in eastern Rocky Mount, Princeville, eastern Tarboro, and Pinetops lie within flood zones that flood repeatedly and will continue flooding. Officials in Princeville identified portions of the Tar River that repeatedly breach its banks, spreading floodwater west and southwest into low-income neighborhoods in Tarboro and Princeville.
- **Displaced Residents and Tax Base Impacts:** County officials noted 120 families that remain displaced and living in motels in Edgecombe County. This figure may be higher when considering the families living with family or friends. There is significant concern for population loss as residents are unable to return to their homes and eventually relocate in other towns or counties thereby depleting the local tax base. This limits the services and effectiveness of municipalities and Edgecombe County.
- **Residential/Commercial/Civic Displacement Impacts in Princeville:** Hurricane Matthew displaced officials, students and residents from their homes, elementary school, offices and businesses located in flood-prone areas. Relocating residents and local businesses as well as civic spaces, including the town hall, fire station, and senior center, to areas outside of the floodplain would prevent future flooding. The fire station and town hall sustained serious damage during Matthew.

Economics / Business / Jobs

Local officials in multiple meetings identified impacts to the economy in Edgecombe County from Hurricane Matthew to the economy/businesses/jobs.

- **Small Business Facilities:** Across Edgecombe County, many small businesses were impacted either directly from damage during and after Hurricane Matthew from flooding, or from storm effects such as residents being displaced. Small business owners find repairs and floodproofing cost-prohibitive, and making these repairs affected operations and made them vulnerable to Hurricane Matthew flooding and future flood events. In some cases, small business owners continue to pay on Small Business

Administration (SBA) loans from Hurricane Floyd. Owners lack resources to respond and recover from Hurricane Matthew.

- **Diminishing Employment Opportunities:** Hurricane Matthew's impacts to small businesses and to local population decreased employment opportunities for residents who remain or desire to return. This has led to continued departures from towns like Princeville and other small communities in the county as residents find opportunity elsewhere.
- **Agricultural Operations:** Farming is Edgecombe County's central industry, and farms across the county were flooded during Hurricane Matthew. Flooding damaged farm fields, farm roads, culverts, drainage ditches, and ponds. Crop damage was extensive, and included sweet potatoes, one of the most valuable crops to the county. Producers lost 75% of their sweet potato crop resulting from Hurricane Matthew flooding
- **Recreation and Ecotourism:** Hurricane Matthew impacted Edgecombe County tourism negatively. The Tar River was affected by flooding from Hurricane Matthew. The existing paddle trail that goes through Edgecombe County is obstructed by storm debris, limiting the county's ability to entice paddlers to spend additional time and money in Edgecombe County.

Infrastructure

According to Public Assistance (PA) claims, which are often closely tied to infrastructure, as of 2017 there was \$1,655,571 of claims in Edgecombe County as a result of Hurricane Matthew. It should be noted that additional claims from Hurricane Matthew might still be pending, so this number may not reflect the final claims data from the event. The majority of these countywide claims are located within the Princeville, Tarboro, and Pinetops areas. Of the total amount of Public Assistance claims, Princeville claims 28.8%, Tarboro claims 22.6%, and Pinetops claims 17.8%.

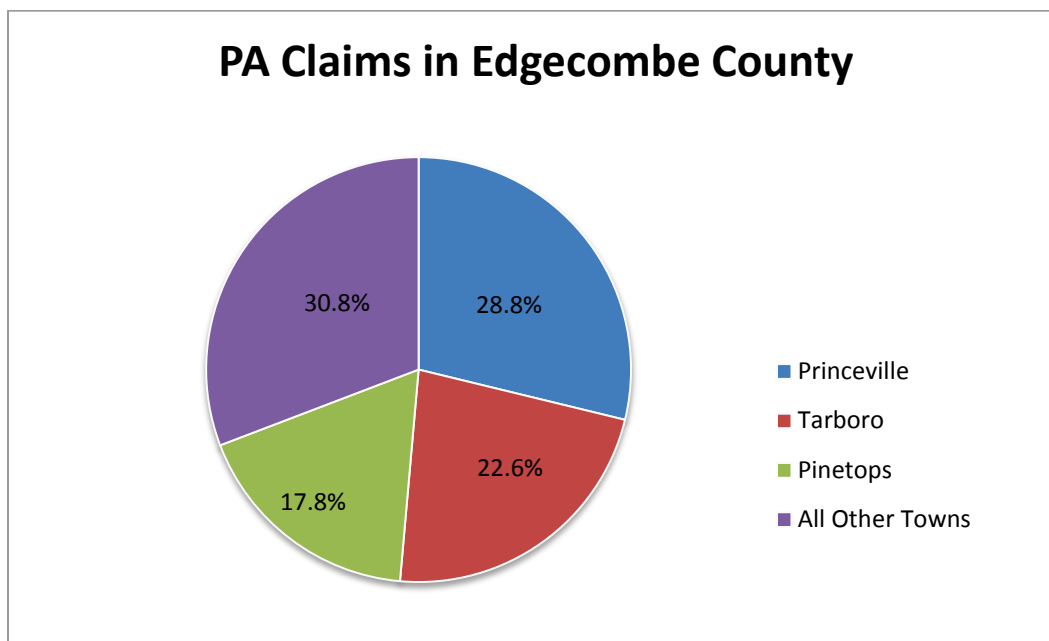


Figure 13. Edgecombe County PA Claims by Area and Percentage

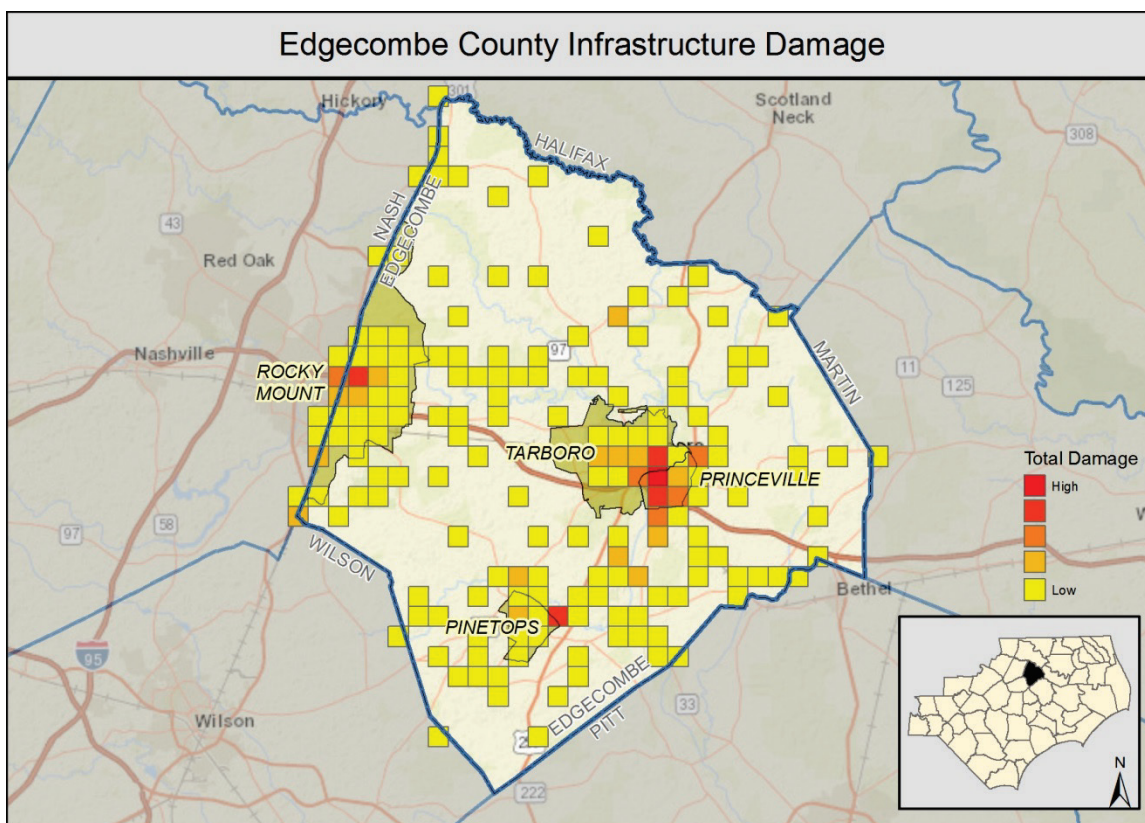


Figure 14. Edgecombe County Infrastructure Damage

County infrastructure was one of the greatest areas of concern in the wake of Hurricane Matthew as there were several types of infrastructure that were damaged in multiple locations. The bullets below summarize some of the major impacts to infrastructure identified by local officials from multiple meetings.

- Stormwater Infrastructure:** The largest impacts from Hurricane Matthew were caused not as the storm passed but in the days after when flooding built up along the Tar River, creeks, and drainage swales and ditches. The Tar River breached five days after Hurricane Matthew passed through Edgecombe County. Insufficient and blocked stormwater infrastructure retained increased water flows from the hurricane, continued to back up, and began flooding in the days after the hurricane. Flooding damaged or destroyed many culverts and drainage pipes throughout Edgecombe County. The North Carolina Department of Transportation (NCDOT) provided the locations on 40 roads where culverts/pipe replacements are needed after Hurricane Matthew:

- SR 1505 Dickens Road
- SR 1404 Seven Bridges Road
- SR 1612 Branch Farm Road
- SR 1514 Mabry Creek Road
- SR 1611 Carr Farm Road
- SR 1124 Temperance Hall Road
- SR 1126 Faith Baptist Church
- SR 1205 Silent Night Hill
- SR 1146 Flood Store Road
- SR 1135 Pleasant Hill
- SR 1208 Howard Ave Extension
- SR 1370 Wiggins Lake
- SR 1148 Myers Road
- SR 1428 White Oak Swamp
- SR 1108 Webbs Lake Road
- SR 1525
- SR 1102 Otter Creek Church Road
- SR 1618 Sawyer Road
- SR 1004 Webbs Chapel
- SR 1132 Saw Mill Road
- SR 1224 Nobles Mill Pond
- SR 1200 Bynum Farm
- SR 1533 Batts Chapel Road
- SR 1125 Squires Road
- SR 1604 Brown Farm Road
- SR 1136 Baie Road
- SR 1606 Ellis Road
- SR 1131 High Level Road
- SR 1524 Chinquapin Road
- SR 1530 Fountain Road
- SR 1003 Davistown Mercer
- SR 1006 Bullock School Road
- SR 1207 McNair Road
- US 258
- NC 97
- NC 33
- NC 11
- NC 111
- NC 43
- US 64 Alt

- **Water/Wastewater Infrastructure:** Water and wastewater infrastructure is critical to maintaining the health and well-being of the public in the wake of a storm event. Often this infrastructure is threatened due to the necessity of placing it near water bodies, which naturally causes risk of flooding. Hurricane Matthew impacted a number of water/wastewater facilities in Edgecombe County.
 - Hurricane Matthew threatened the Tarboro Water Treatment Plant during Hurricane Matthew. Floodwaters eroded the riverbank near the facility near the facility's lab building, and the plant lost power during the hurricane. In addition, corrugated sewer pipes throughout the Tarboro area are rusted and of insufficient capacity to handle flood events.
 - The Pinetops Wastewater Treatment Plant experienced power loss during Hurricane Matthew. The plant was shut down to prevent damage to the plant, and wastewater was discharged during the storm event.
 - Rocky Mount, Tarboro, Macclesfield and Pinetops operate wastewater treatment facilities in Edgecombe County, and they provide service to smaller municipalities across the county. Tarboro and Rocky Mount have the largest facilities and provide service to areas of the unincorporated county. Facilities are at risk and events like Hurricane Matthew place them in

- greater risk. In addition, small facilities like the Town of Macclesfield Wastewater Treatment Plant are already undersized and are vulnerable to storms and flooding events like Hurricane Matthew.
- Several sewer lift stations were damaged and their backup generators damaged from Matthew's floodwaters.
 - The Curve Lift Station - motors and relays damaged - generator was damaged.
 - Greenwood Lift Station - motors and relays damaged - generator was damaged.
 - Church St. Lift Station - motors and relays damaged - generator was damaged.
 - Freedom Hill Lift Station - generator damaged.
 - Lakeside Lift Station - generator damaged.
 - Coker-Wimberly Lift Station - generator damaged.
 - Flooding damaged or destroyed approximately 40 culverts and county water and sewer lines were damaged at these locations throughout Edgecombe County. NCDOT will replace/repair the county culverts, but not the water and sewer pipes along the culverts. The locations of these along 40 roads are listed under Stormwater infrastructure above.
 - **Road/Bridge Flooding:** Road and bridge overtopping are common occurrences in Edgecombe County and impacted a number of different locations during Hurricane Matthew. Many of these locations have been historical hotspots in the county and are affected even during rainfall events that are not as extreme as hurricane/tropical storm events. Road closures due to flooding corresponded to existing flood zone mapping, especially along the Tar River with concentrations of closures in the Princeville area. Road closures caused limited access and delays for emergency services and isolated some residents.

- The following roads were closed during and after Hurricane Matthew:

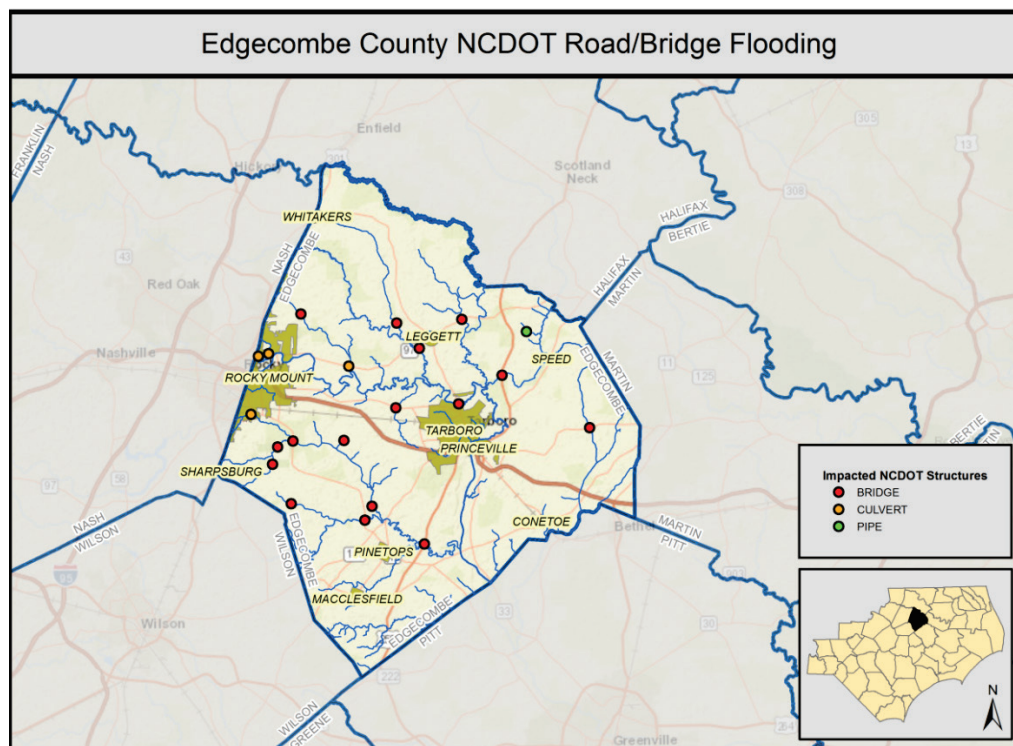


Figure 15. Impacted NCDOT Structures in Edgecombe County

- Springfield Road between US 64 and NC 97
- Leggett Road between Cox Avenue and NC 97
- NC 97 between Cool Spring Road and Dunbar Road
- Dunbar Road between US 64 and NC 97
- US 64 between Penders Mill Run and Raccoon Branch Road
- NC 33 between the Edgecombe County border and Thigpen Road
- Brown Farm Road between US 258 and Colonial Road
- Colonial Road between Suggs Road and Rest-A-Bit Road
- Rest-A-Bit Road between US 258 and Colonial Road
- NC 33 between South Shiloh Farm Road and US 64
- Shiloh Farm Road between NC 33 and US 258
- US 64 between the Tar River and Shiloh Farm Road
- NC 111 between US 64 and Chaplain Road
- US 258 between NC 111 and Howell Road
- Daniel Street between Baker Street Ext and US 258
- NC 33 between East Northern Boulevard and Logsboro Road
- Roberson School Road between US 64 and NC 42
- Hwy 97 outside of Rocky Mount – Near N34
- East of highway 97, near Key Branch and Beech Branch

- **Notification of Residents by County Emergency Notification System:** Residents reported uneven notification in various communities throughout the county of emergency code red warnings.
- **Dams and Levees:** Edgecombe has seven dams classified as high hazard, according to the most recent regional hazard mitigation plan. There are seven reservoirs and two levees (the Town of Princeville and Town of Speed). The county and local officials of Princeville expressed concern that the levee did not protect Princeville, but the others were of no particular concern during the storm event
- **Underserved Populations Lack Mobility:** Flooding from Hurricane Matthew limited access to population centers by cutting off roadways and many businesses throughout the county. In addition, flooding closed many businesses thereby straining the finances of low-income employees. Local officials indicate that mobility and employment is limited by existing transit service. Public transportation could have provided an alternative to connect underserved populations to employment opportunities despite their limited access. Local officials listed needs for expanding fixed route public transportation services to increase the mobility of vulnerable populations.

Ecosystems / Environment

Environmental impacts in Edgecombe County as a result of Hurricane Matthew link to other impacts in housing, economic development, and infrastructure and are broad in nature. In some cases, preexisting damage or lack of attention to forests, wetlands, and natural systems created new impacts during Hurricane Matthew. These impacts likely will recur for future storm and flood events.

- **Natural Debris Buildup Causing Flooding:** Local officials noted a general, but imminent, concern for the buildup of hurricane-generated debris in the Tar River, creeks, swales and wetlands throughout Edgecombe County. Indeed, flooding in areas, such as Princeville, Tarboro and Rocky Mount, was linked to debris in water bodies. Debris blocking drainage swales and streams resulted in flooding of many agricultural crops and facilities, as well. Typically, downed trees and branches, and other hurricane related debris comprise a large amount of the blockage. Deposited debris is often caught underneath bridges and in culverts, causing a blockage, which backs up water upstream resulting in flooding. Beaver dams, in particular, are of concern as they are extensive and difficult to eradicate.
- **Abandoned Parcels, Structures and Vacant Land:** The county has properties attained from buyouts during Hurricane Fran and Floyd and will attain property from buyouts resulting from Hurricane Matthew. Much of this open space is unplanned and remains vacant and unaddressed. Many of these properties have dilapidated structures because of a lack of funds to demolish them. The parcels cannot be used for occupied structures. Officials expressed concerns and noted unmet needs to determine:
 - If there are concentrations of parcels that could be combined for future use;
 - If there are economically viable uses;
 - If there are potential contiguous open space and recreational sites and areas;
 - If certain parcels could be used by the community as parks, commercial uses such as timber farming and/or community gardens; and 5.). A strategy is needed for ongoing maintenance, including funding sources.
- **Health Vulnerability in Environmental Justice Communities:** Residents and officials have expressed concern for impacts from storm and flood events, such as Hurricane Matthew, include the recurring and

cumulative effects of disasters on the community's mental and physical health. The Town of Princeville, for example, has flooded multiple times since Hurricane Floyd and strained the resources of underserved residents who often are unable to pay for home elevations or new homes outside of flood zones. Recovery and prevention from hurricane and flood impacts tends to be more difficult in these communities. Over time, recurring impacts strain the mental and physical capabilities of residents and further damage communities.

- **Potential Undetected Toxins and Mold:** Residents have expressed concern over lack of home inspections of self-repaired homes that may have resulted in indoor air and toxin releases and mold problems.

An aerial photograph showing a residential neighborhood severely affected by flooding. The water is a murky, brownish-yellow color, submerging large areas of the landscape. Numerous houses with grey and brown roofs are visible, some partially submerged. A network of roads and paths crisscrosses the area, with some sections completely underwater. Large green trees are scattered throughout, many of which are isolated in the floodwater. The overall scene depicts significant environmental damage and displacement.

4. Strategies for Resilient Redevelopment

4. Strategies for Resilient Redevelopment

This section provides details about the resilience and revitalization strategies and actions identified in Edgecombe County. These actions were identified and refined during three public meetings with local officials and county residents held in March and April 2017. The actions are tied to impacts from Hurricane Matthew and organized by the pillars of housing, economic development, infrastructure and environment. In addition to the public meetings, frequent coordination calls with County officials and data gathered from state agencies and organizations were utilized to formulate the actions listed below.

Meeting 1 was designed to introduce the community and County points of contact to the Resilient Redevelopment Planning process and goals. This meeting allowed the planning team to capture areas within the county that were damaged during Hurricane Matthew and to hear what potential mitigation actions had already been considered. Draft resilience actions were then presented at Meeting 2 of the planning process. This was done to garner general buy-in on the draft actions from the County-level planning teams and residents. More details on the actions were collected between Meetings 2 and 3 through research and follow-up phone calls and emails with the primary points of contact. Meeting 3 provided the opportunity to collect and finalize details for the draft actions. Meeting 4, scheduled in early May 2017, allowed the County points of contact to rank the identified actions, group them into High, Medium, and Low Priorities, and to approve their inclusion in the plan.

Pillar	Project/Action Count
Housing	8
Economic Development	8
Infrastructure	7
Environment	7
Grand Total	30

Table 4. Edgecombe County Summary of Projects by Pillar

The following table is ordered by the rankings and priorities provided by Edgecombe County during Meeting 4:

Pillar	Action Name	Priority	Overall Ranking
Infrastructure	Edgecombe Infrastructure Action 6: Levee Repair	High	1
Infrastructure	Edgecombe Infrastructure Action 7: Repair Sewer Lift Stations	High	2
Housing	Edgecombe Housing Action 6: Gap Housing Funding	High	3
Housing	Edgecombe Housing Action 1: Mixed-use and Mixed-Income Community Development	High	4
Housing	Edgecombe Housing Action 2: New Housing Development in Pinetops and other Areas	High	5
Infrastructure	Edgecombe Infrastructure Action 5: Stormwater Assessment and Improvements	High	6
Economic Development	Edgecombe Economic Development Action 4: Low-Income Grant Program for Small Business Recovery	High	7
Economic Development	Edgecombe Economic Development Action 5: Pilot Tree-to-Timber Program	High	8
Environment	Edgecombe Environment Action 3: Indoor Air and Toxin Quality Assessment and Remediation	High	9

Pillar	Action Name	Priority	Overall Ranking
Housing	Edgecombe Housing Action 3: Housing Counseling and Support Services	High	10
Infrastructure	Edgecombe Infrastructure Action 4: Pinetops and Tarboro Wastewater Treatment Facilities	High	11
Environment	Edgecombe Environment Action 6: Disaster Response Program Enhancement	High	12
Housing	Edgecombe Housing Action 5: Housing Repair and Rehabilitation Assistance	Medium	13
Infrastructure	Edgecombe Infrastructure Action 1: Farm Infrastructure Assistance	Medium	14
Economic Development	Edgecombe Economic Development Action 7: Vegetable Crop Disaster Assistance (NAP Crops)	Medium	15
Infrastructure	Edgecombe Infrastructure Action 2: Water/Sewer Line and Culvert Repair and Replacement	Medium	16
Economic Development	Edgecombe Economic Development Action 6: Agriculture Buyout of Facilities	Medium	17
Economic Development	Edgecombe Economic Development Action 8: Develop new/beginning farming operations	Medium	18
Housing	Edgecombe Housing Action 8: Administrative Capacity Support	Medium	19
Environment	Edgecombe Environment Action 1: Environmental Justice and Health Vulnerability Assessment	Medium	20
Environment	Edgecombe Environment Action 4: Open Space and Park System Master Plan	Medium	21
Environment	Edgecombe Environment Action 5: Land Development Plan Update	Medium	22
Environment	Edgecombe Environment Action 7: Implement Riparian Buffers	Low	23
Environment	Edgecombe Environment Action 2: Clear Waterways of Debris	Low	24
Housing	Edgecombe Housing Action 7: Ongoing Housing Operations and Expenses	Low	25
Infrastructure	Edgecombe Infrastructure Action 3: Improve Mobility for Underserved Population	Low	26
Economic Development	Edgecombe Economic Development Action 3: Sustainable Tourism Development and Marketing	Low	27
Economic Development	Edgecombe Economic Development Action 1: Sustainable Tourism Development Visitor Center and Interpretive Trails	Low	28
Economic Development	Edgecombe Economic Development Action 2: Development of River Paddle and Walking/Biking Trails	Low	29
Housing	Edgecombe Housing Action 4: Temporary Modular Home Facilities for Displaced Individuals	Low	30

Table 5. Projects by Rank

On the following pages, we have organized the projects and actions by pillar. Within each pillar, the projects are grouped by county priority. Please note that maps are provided for all projects that have a specific location within the county. Projects without maps are county-wide projects that will benefit citizens throughout the county.

Housing Strategies

High Priority Housing Strategies

Pillar	Action Name	Priority	Overall Ranking
Housing	Edgecombe Housing Action 6: Gap Housing Funding	High	3
Housing	Edgecombe Housing Action 1: Mixed-use and Mixed-Income Community Development	High	4
Housing	Edgecombe Housing Action 2: New Housing Development in Pinetops and other Areas	High	5
Housing	Edgecombe Housing Action 3: Housing Counseling and Support Services	High	10

Table 6. Edgecombe High Priority Housing Summary

These four projects represent the housing strategies that Edgecombe County indicated are the highest priority to address. Additional detail on the projects can be found below:

- **Gap Housing Funding:** This project would provide matching funds/zero interest loans/grants to families to meet the gap between the new home cost and value of their old home, contingent on a period of residency in the county before and after the grant.
- **This is a county-wide project, so no project area map has been included.**

Edgecombe Housing Action 6: Gap Housing Funding

County: Edgecombe

Priority Grouping: High Priority

Priority Ranking: 2

Project Timeframe: Unknown

Location: Edgecombe County

Project Summary: This project would provide matching funds/zero interest loans/grants to families to meet the gap between the new home cost and value of their old home, contingent on a period of residency in the county before and after the grant.

Question	Response	Disposition
Articulate how this project addresses an unmet need that has been created by damage from Hurricane Matthew.	Gap funding has been identified as an unmet need to assist low-income residents meet the gap between the money they receive in a buyout and the price of a new home. This project will help them afford to pay for a home.	N/A
Consistent with existing plans (describe points of intersection/departure)	There are no known housing plans in the county.	Agree
Does this project comply with existing Local and State authority (codes, plan and ordinance)?	Yes	Agree
Does this project meet the intents and goals for the Hurricane Matthew Recovery Act?	Yes	Agree
Explain any benefits or impacts to the economy of the county from this project.	Residents are more likely to remain in the county and the county tax base would be improved or maintained. The project also provides higher quality housing than what the owners could otherwise afford.	Agree
For how long will this solution be effective?	More than 50 years	Agree
How effective is the risk reduction?	Unknown	Agree
How many public facilities are involved in this project (buildings and infrastructure)?	0	Agree
Is coordination with other communities/counties needed to complete this project?	Yes	Agree
Is this project consistent with Federal Laws	Yes	Agree
To what degree does this project adversely impact local floodplain/coastal zone management?	No Impact	Agree
To what degree will it be possible to positively quantify the environmental benefits and ROI of this project?	Unknown	N/A
What impact will this action have on the local economy/tax base?	Between 51 and 75%	Agree
What impacts to the environment of the county will result from this project?	N/A	N/A
What is the capability of the local government to administer this project?	Low	Agree
What is the financial range of this project?	\$1M+	Agree
What is the level of public support for this project?	High	Agree
What is the technical feasibility of this project?	Unknown	Agree
Who will administer this project?	State	Agree

- **Mixed-use and Mixed-Income Community Development in Princeville:** This project aims to create a new “center” for Princeville that is located outside of the floodplain, reducing the amount of future damages to the community. This center would be designed for those residents who would like to remain in Princeville while relocating away from flood-prone areas. Though exact numbers of units would be dependent upon the market and need at the time of development, potential mixes would include 100 single family homes, 100 family rental homes, and 100 senior-oriented homes. In addition, commercial space would be included for local businesses and a municipal complex would be planned for the relocation of civic buildings including the town hall, fire station, and senior center. The fire station and town hall were seriously damaged during Hurricane Matthew.

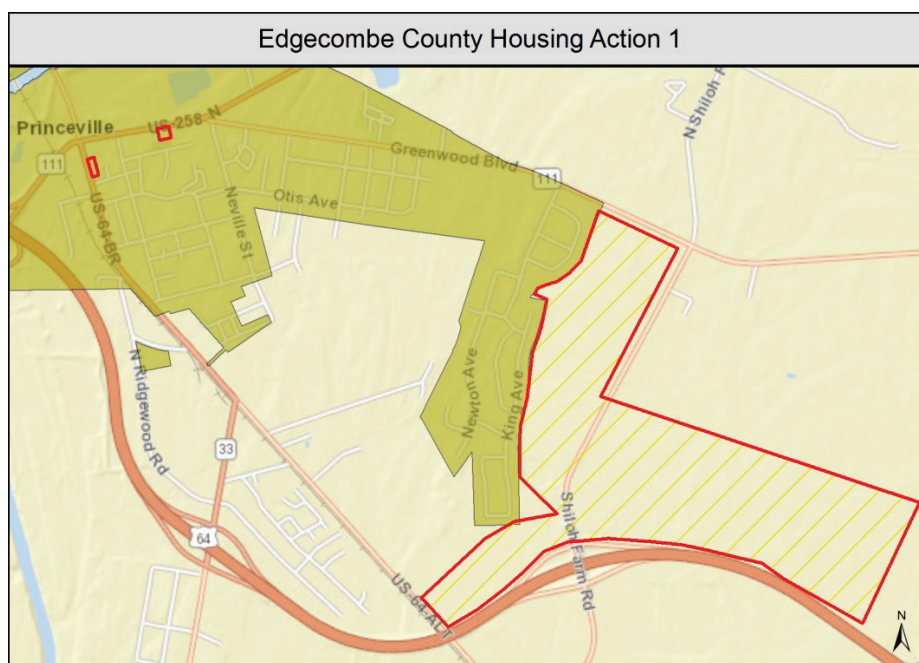


Figure 16. Housing Action 1: Mixed-use and Mixed-Income Community Development in Princeville

Edgecombe Housing Action 1: Mixed-use and Mixed-Income Community Development

County: Edgecombe

Priority Grouping: High Priority

Priority Ranking: 4

Project Timeframe: Unknown

Location: Princeville and Princeville ETJ

Project Summary: This project aims to create a new “center” for Princeville for those residents who would like to remain in Princeville while also moving away from flood-prone areas, reducing the amount of future damages to the community. Though exact numbers of units would be dependent upon market and need at the time of development, potential mixes would include 100 single family homes, 100 family rental homes, and 100 senior-oriented homes. In addition, commercial space would be included for local businesses serving residents and civic space would be planned for a municipal complex where the relocation of the town hall, fire station, and senior center could be sited.

Question	Response	Disposition
Articulate how this project addresses an unmet need that has been created by damage from Hurricane Matthew.	Princeville is a historic area plagued by historic storm events and while residents have rebuilt the flood maps indicate a high risk of future flooding. Currently residents have had to seek temporary shelter outside of Princeville and in many cases outside of Edgecombe County.	N/A
Consistent with existing plans (describe points of intersection/departure)	Yes	Agree
Does this project comply with existing Local and State authority (codes, plan and ordinance)?	Yes	Agree
Does this project meet the intents and goals for the Hurricane Matthew Recovery Act?	Yes	Agree
Explain any benefits or impacts to the economy of the county from this project.	Relocating residents within the county but outside of flood-prone areas will help retain residents and a tax base.	Agree
For how long will this solution be effective?	More than 50 years	Agree
How effective is the risk reduction?	>200 year event	Agree
How many public facilities are involved in this project (buildings and infrastructure)?	4-6	Agree
Is coordination with other communities/counties needed to complete this project?	No	Agree
Is this project consistent with Federal Laws	No	Agree
To what degree does this project adversely impact local floodplain/coastal zone management?	No Impact	Agree
To what degree will it be possible to positively quantify the environmental benefits and ROI of this project?	Unknown	N/A
What impact will this action have on the local economy/tax base?	Higher than 75%	Agree
What impacts to the environment of the county will result from this project?	Building new homes provides the opportunity to include energy efficiencies.	N/A
What is the capability of the local government to administer this project?	Medium	Agree
What is the financial range of this project?	\$1M+	Agree
What is the level of public support for this project?	High	Agree
What is the technical feasibility of this project?	Unknown	Agree
Who will administer this project?	Unknown	Agree

- New Housing Development in Pinetops Area and Other Affected Areas:** This project would develop housing to provide relocation options to families moving post-buyout (for example, in the area of Bynum Farm Road, Bynum Drive, Frances Drive, and Cypress neighborhood near Pinetops, New Hope Church Rd and Rt. 97 in Rocky Mount, and scattered sites with need) as well as diversify the types of housing available in the county, something stakeholders and residents have expressed is a need to retain/grow population—both for the aging population and those forming new households. Aside from the Princeville residents rehoused under a separate project, the project would seek to develop approximately 80 homes—either larger single-family “family”-oriented homes or smaller senior-friendly patio homes, as need indicates, and multifamily rental units suitable for young families and others in need of quality rental housing.

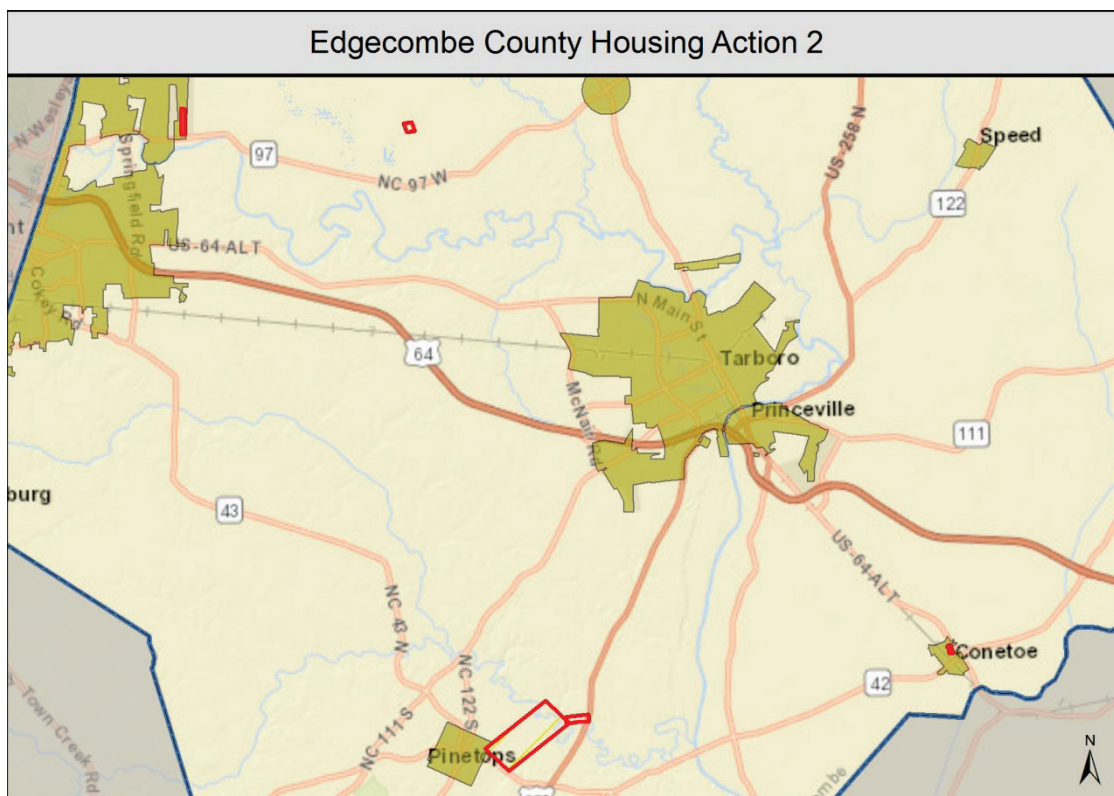


Figure 17. Housing Action 2: New Housing Development in Pinetops Area and Other Affected Areas

Edgecombe Housing Action 2: New Housing Development in Pinetops and other Areas

County: Edgecombe

Priority Grouping: High Priority

Priority Ranking: 5

Project Timeframe: Unknown at this time

Location: Town of Pinetops, Other Areas

Project Summary: This project would seek to develop housing to provide relocation options to families moving post-buyout (for example, in the area of Bynum Farm Road, Bynum Drive, Frances Drive, and Cypress neighborhood near Pinetops, New Hope Church Rd and Rt. 97 in Rocky Mount, and scattered sites with need) as well as diversify the types of housing available in the county. Aside from the Princeville residents rehoused under a separate project, the project would seek to develop approximately 80 homes as needs indicate, and multifamily rental units suitable for young families and others in need of quality rental housing.

Question	Response	Disposition
Articulate how this project addresses an unmet need that has been created by damage from Hurricane Matthew.	Currently many residents have had to seek temporary shelter outside the county. There is also reportedly a lack of acceptable housing for resident relocation within the county which could ultimately result in the loss of population and tax base to the county.	N/A
Consistent with existing plans (describe points of intersection/departure)	The area near Pinetops is indicated in the Edgecombe County Land Development Plan from 2008 as a “growth area”.	Agree
Does this project comply with existing Local and State authority (codes, plan and ordinance)?	Yes	Agree
Does this project meet the intents and goals for the Hurricane Matthew Recovery Act?	Yes	Agree
Explain any benefits or impacts to the economy of the county from this project.	Relocating residents within the county but outside of flood-prone areas will help retain residents and a tax base. Construction of a new mixed-use location will provide construction period jobs and a boost to the local economy.	Agree
For how long will this solution be effective?	More than 50 years	Agree
How effective is the risk reduction?	100-200 year event	Agree
How many public facilities are involved in this project (buildings and infrastructure)?	1-3	Agree
Is coordination with other communities/counties needed to complete this project?	No	Agree
Is this project consistent with Federal Laws	Yes	Agree
To what degree does this project adversely impact local floodplain/coastal zone management?	No Impact	Agree
To what degree will it be possible to positively quantify the environmental benefits and ROI of this project?	Medium to high confidence	N/A
What impact will this action have on the local economy/tax base?	Between 51 and 75%	Agree
What impacts to the environment of the county will result from this project?	Positive effects by moving development out of the floodplain.	N/A
What is the capability of the local government to administer this project?	Medium	Agree
What is the financial range of this project?	\$1M+	Agree
What is the level of public support for this project?	High	Agree
What is the technical feasibility of this project?	Unknown	Agree
Who will administer this project?	Unknown	Agree

- **Housing Counseling and Support Services:** This project would provide funding for grants for non-profit organizations for housing counseling, such as the Rocky Mount/Edgecombe Community Development Corporation (RMECDC), and to those non-profits to provide materials, staffing assistance, and operating budgets. Local case managers should be residents within Edgecombe County so they have an understanding of the issues residents face in the county.
- **This is a county-wide project, so no project area map has been included.**

Edgecombe Housing Action 3: Housing Counseling and Support Services

County: Edgecombe

Priority Grouping: High Priority

Priority Ranking: 10

Project Timeframe: Unknown at this time.

Location: Countywide

Project Summary: This project would provide funding for grants for non-profit organizations for housing counseling (e.g., the RMECDC) and to those non-profits doing rehabilitation and restoration work on housing in the community (e.g., Samaritan's Purse, the United Methodist Church, and the Mennonite Disaster Service), to provide materials, staffing assistance, and operating budget. It would also provide matching funds/zero interest loans/grants to families to meet the gap between the new home cost and value of their old home, contingent on a period of residency in the county before and after the grant and on utilizing the housing counseling made available by this program.

Question	Response	Disposition
Articulate how this project addresses an unmet need that has been created by damage from Hurricane Matthew.	Many homes were destroyed in Edgecombe County during Hurricane Matthew and there is insufficient existing housing stock outside of flood-prone areas to accommodate relocations within the county.	N/A
Consistent with existing plans (describe points of intersection/departure)	Yes	Agree
Does this project comply with existing Local and State authority (codes, plan and ordinance)?	Yes	Agree
Does this project meet the intents and goals for the Hurricane Matthew Recovery Act?	Yes	Agree
Explain any benefits or impacts to the economy of the county from this project.	This would enable the county to retain its existing population and would also ensure households are financially literate in their options to buy or rent.	Agree
For how long will this solution be effective?	Less than 10 years	Agree
How effective is the risk reduction?	Unknown	Agree
How many public facilities are involved in this project (buildings and infrastructure)?	0	Agree
Is coordination with other communities/counties needed to complete this project?	No	Agree
Is this project consistent with Federal Laws	Yes	Agree
To what degree does this project adversely impact local floodplain/coastal zone management?	No Impact	Agree
To what degree will it be possible to positively quantify the environmental benefits and ROI of this project?	Unknown	N/A
What impact will this action have on the local economy/tax base?	Unknown	Agree
What impacts to the environment of the county will result from this project?	None	N/A
What is the capability of the local government to administer this project?	Medium	Agree
What is the financial range of this project?	\$101K - \$250K	Agree
What is the level of public support for this project?	High	Agree
What is the technical feasibility of this project?	Between 51 and 75%	Agree
Who will administer this project?	County	Agree

Medium Priority Housing Strategies

Pillar	Action Name	Priority	Overall Ranking
Housing	Edgecombe Housing Action 5: Housing Repair and Rehabilitation Assistance	Medium	13
Housing	Edgecombe Housing Action 8: Administrative Capacity Support	Medium	19

Table 7. Edgecombe Medium Priority Housing Summary

These two projects represent the housing strategies that Edgecombe County indicated are of a medium priority to address. Additional detail on the projects can be found below:

- **Housing Repair and Rehabilitation Assistance:** This project would address housing rehabilitation and provide funding for restoration in order to return residents to their homes and jobs, and reduce the disruption to the local economy that has resulted from Hurricane Matthew.
- **This is a county-wide project, so no project area map has been included.**

Edgecombe Housing Action 5: Housing Repair and Rehabilitation Assistance

County: Edgecombe

Priority Grouping: Medium Priority

Priority Ranking: 13

Project Timeframe: Unknown

Location: Edgecombe County

Project Summary: This project would address housing rehabilitation and provide funding for home repairs and restoration in order to return residents to their homes, to jobs, and reduce the disruption to the local economy that has resulted from the storm. Additional funds for those charities doing restoration work will enhance the rate at which such work can be completed.

Question	Response	Disposition
Articulate how this project addresses an unmet need that has been created by damage from Hurricane Matthew.	Many homes were damaged in Edgecombe County during Hurricane Matthew and assistance to repair those homes has been identified as an unmet need in the county. Many households are unable to repair the damage and leave the county in search of adequate or temporary housing.	N/A
Consistent with existing plans (describe points of intersection/departure)	There are no known housing plans in the county.	Agree
Does this project comply with existing Local and State authority (codes, plan and ordinance)?	Yes	Agree
Does this project meet the intents and goals for the Hurricane Matthew Recovery Act?	Yes	Agree
Explain any benefits or impacts to the economy of the county from this project.	Displaced residents may return sooner to their homes and work helping to restore the county's tax base.	Agree
For how long will this solution be effective?	Between 11 and 30 years	Agree
How effective is the risk reduction?	Unknown	Agree
How many public facilities are involved in this project (buildings and infrastructure)?	0	Agree
Is coordination with other communities/counties needed to complete this project?	No	Agree
Is this project consistent with Federal Laws	Yes	Agree
To what degree does this project adversely impact local floodplain/coastal zone management?	No Impact	Agree
To what degree will it be possible to positively quantify the environmental benefits and ROI of this project?	Unknown	N/A
What impact will this action have on the local economy/tax base?	Unknown	Agree
What impacts to the environment of the county will result from this project?	N/A	N/A
What is the capability of the local government to administer this project?	Low	Agree
What is the financial range of this project?	\$251K - \$500K	Agree
What is the level of public support for this project?	High	Agree
What is the technical feasibility of this project?	Unknown	Agree
Who will administer this project?	County	Agree

- **Administrative Capacity Support:** Government offices and non-profits across the county are underfunded and administrative capacity for recovery efforts lack administrative capacity and resources. This project would provide administrative capacity support and training for non-profits and CDCs across Edgecombe County to assist government and non-profit organizations provide more effective administrative, logistical, and financial support.
- **This is a county-wide project, so no project area map has been included.**

Edgecombe Housing Action 8: Administrative Capacity Support

County: Edgecombe

Priority Grouping: Medium Priority

Priority Ranking: 19

Project Timeframe: Unknown

Location: Edgecombe County

Project Summary: Government offices across the county are understaffed and administrative capacity for recovery efforts lack personnel and resources. This project would provide funding for administrative capacity support, and staffing. Funding should be extended to non-profits and CDCs across Edgecombe County to assist government and non-profit organizations provide more effective administrative, logistical, and financial support.

Question	Response	Disposition
Articulate how this project addresses an unmet need that has been created by damage from Hurricane Matthew.	Local governments are having difficulty meeting regularly and handling the administrative burdens of addressing storm recovery as they are understaffed in personnel and resources. The lack of capacity is affecting recovery efforts and ongoing communications between government agencies and the public.	N/A
Consistent with existing plans (describe points of intersection/departure)	N/A	Agree
Does this project comply with existing Local and State authority (codes, plan and ordinance)?	Yes	Agree
Does this project meet the intents and goals for the Hurricane Matthew Recovery Act?	Yes	Agree
Explain any benefits or impacts to the economy of the county from this project.	Additional capacity will enable the county to recovery more quickly and be more responsive in recovery efforts while continuing ongoing municipal services.	Agree
For how long will this solution be effective?	Between 11 and 30 years	Agree
How effective is the risk reduction?	Unknown	Agree
How many public facilities are involved in this project (buildings and infrastructure)?	0	Agree
Is coordination with other communities/counties needed to complete this project?	No	Agree
Is this project consistent with Federal Laws	Yes	Agree
To what degree does this project adversely impact local floodplain/coastal zone management?	No Impact	Agree
To what degree will it be possible to positively quantify the environmental benefits and ROI of this project?	Unknown	N/A
What impact will this action have on the local economy/tax base?	Unknown	Agree
What impacts to the environment of the county will result from this project?	N/A	N/A
What is the capability of the local government to administer this project?	Medium	Agree
What is the financial range of this project?	\$501K - \$1M	Agree
What is the level of public support for this project?	High	Agree
What is the technical feasibility of this project?	Unknown	Agree
Who will administer this project?	County	Agree

Low Priority Housing Strategies

Pillar	Action Name	Priority	Overall Ranking
Housing	Edgecombe Housing Action 7: Ongoing Housing Operations and Expenses	Low	25
Housing	Edgecombe Housing Action 4: Temporary Modular Home Facilities for Displaced Individuals	Low	30

Table 8. Edgecombe Low Priority Housing Summary

These two projects represent the housing strategies that Edgecombe County indicated are of a lower priority to address. Additional detail on the projects can be found below:

- **Ongoing housing operations and expenses:** This project will provide funds for ongoing housing expenses in order to help residents bear the financial burdens of storm impacts. It would also provide matching funds/zero interest loans/grants to families unable to meet housing expenses due to financial burdens from Hurricane Matthew.
- **This is a county-wide project, so no project area map has been included.**

Edgecombe Housing Action 7: Ongoing Housing Operations and Expenses

County: Edgecombe

Priority Grouping: Low Priority

Priority Ranking: 25

Project Timeframe: Undetermined at this time.

Location: Edgecombe County

Project Summary: This project will provide funds for ongoing housing expenses and tax abatement in order to help residents bear the financial burdens of storm impacts. It would also provide matching funds/zero interest loans/grants to families unable to meet housing needs and pay taxes due to financial burdens from Hurricane Matthew.

Question	Response	Disposition
Articulate how this project addresses an unmet need that has been created by damage from Hurricane Matthew.	Ongoing housing expenses have been identified as an unmet need particularly to assist low-income residents pay for housing costs and taxes and keep their families sheltered.	N/A
Consistent with existing plans (describe points of intersection/departure)	There are no housing plans in the county.	Agree
Does this project comply with existing Local and State authority (codes, plan and ordinance)?	Yes	Agree
Does this project meet the intents and goals for the Hurricane Matthew Recovery Act?	Yes	Agree
Explain any benefits or impacts to the economy of the county from this project.	This program could help keep residents in their homes and therefore help maintain/improve county tax base.	Agree
For how long will this solution be effective?	Less than 10 years	Agree
How effective is the risk reduction?	Unknown	Agree
How many public facilities are involved in this project (buildings and infrastructure)?	0	Agree
Is coordination with other communities/counties needed to complete this project?	No	Agree
Is this project consistent with Federal Laws	Yes	Agree
To what degree does this project adversely impact local floodplain/coastal zone management?	No Impact	Agree
To what degree will it be possible to positively quantify the environmental benefits and ROI of this project?	Unknown	N/A
What impact will this action have on the local economy/tax base?	Higher than 75%	Agree
What impacts to the environment of the county will result from this project?	N/A	N/A
What is the capability of the local government to administer this project?	Medium	Agree
What is the financial range of this project?	\$1M+	Agree
What is the level of public support for this project?	High	Agree
What is the technical feasibility of this project?	Higher than 75%	Agree
Who will administer this project?	County	Agree

- Temporary Modular Home Facilities for Displaced Individuals:** Hurricane Matthew resulted in the flooding of approximately 470 single family residences and 299 rental units in the Town of Princeville. Because of the high volume of displaced people and the inadequate supply of long-term temporary housing in the county, displaced residents were placed in hotels as far away as Wilson and Pitt Counties. The project would create a temporary housing complex for displaced residents. The complex would be located on elevated ground to avoid flooding impacts, and could later be used as the site for the municipal complex. This site would initially include water, wastewater, electrical and trash pickup services. This site would allow temporary housing to be set up quickly, providing county residents with an alternative to temporary housing in areas outside of Edgecombe County.

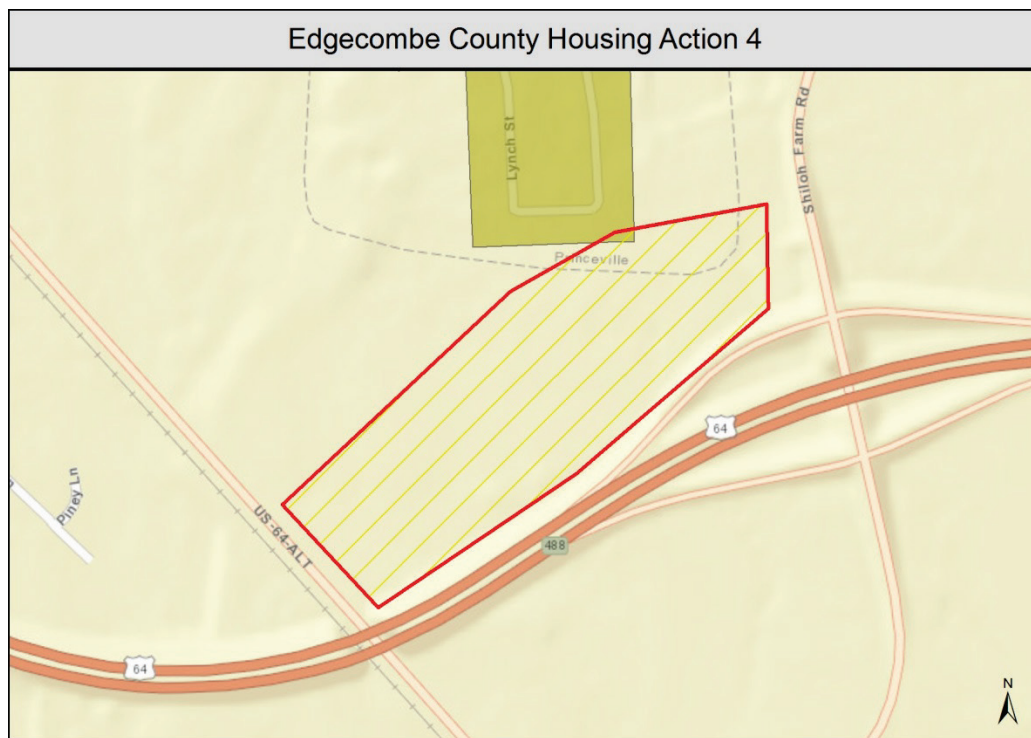


Figure 18. Housing Action 4: Temporary Modular Home Facilities for Displaced Individuals

Edgecombe Housing Action 4: Temporary Modular Home Facilities for Displaced Individuals

County: Edgecombe

Priority Grouping: Low Priority

Priority Ranking: 30

Project Timeframe: 6 months

Location: Edgecombe County

Project Summary: Hurricane Matthew resulted in the flooding of approximately 470 single family residences and 299 rental units in the Town of Princeville. Because of the high number of displaced people and the inadequate supply of temporary housing in the County, displaced residents were placed in hotels as far away as Wilson and Pitt Counties. The project would create a large complex where the future municipal complex could potentially be located. The temporary housing would be located on elevated ground to avoid flooding impacts, and would include water, wastewater, electrical, and trash pickup services.

Question	Response	Disposition
Articulate how this project addresses an unmet need that has been created by damage from Hurricane Matthew.	Residents displaced as a result of Hurricane Matthew have been placed in hotels some of which are located outside the County. Creating a pre-prepared area for long term temporary housing units will increase the County's resiliency.	N/A
Consistent with existing plans (describe points of intersection/departure)	Yes	Agree
Does this project comply with existing Local and State authority (codes, plan and ordinance)?	Yes	Agree
Does this project meet the intents and goals for the Hurricane Matthew Recovery Act?	Yes	Agree
Explain any benefits or impacts to the economy of the county from this project.	Allowing residents to stay in the County while they are displaced from their homes will keep more cash flowing into the local economy rather than neighboring counties where individuals have been placed in hotels.	Agree
For how long will this solution be effective?	Less than 10 years	Agree
How effective is the risk reduction?	Unknown	Agree
How many public facilities are involved in this project (buildings and infrastructure)?	1-3	Agree
Is coordination with other communities/counties needed to complete this project?	No	Agree
Is this project consistent with Federal Laws	Yes	Agree
To what degree does this project adversely impact local floodplain/coastal zone management?	No Impact	Agree
To what degree will it be possible to positively quantify the environmental benefits and ROI of this project?	Unknown	N/A
What impact will this action have on the local economy/tax base?	Between 26 and 50%	Agree
What impacts to the environment of the county will result from this project?	N/A	N/A
What is the capability of the local government to administer this project?	Medium	Agree
What is the financial range of this project?	\$1M+	Agree
What is the level of public support for this project?	Medium	Agree
What is the technical feasibility of this project?	Unknown	Agree
Who will administer this project?	Unknown	Agree

Economic Development Strategies

High Priority Economic Development Strategies

Pillar	Action Name	Priority	Overall Ranking
Economic Development	Edgecombe Economic Development Action 4: Low-Income Grant Program for Small Business Recovery	High	7
Economic Development	Edgecombe Economic Development Action 5: Pilot Tree-to-Timber Program	High	8

Table 9. Edgecombe High Priority Economic Development Summary

These two projects represent the economic development strategies that Edgecombe County indicated are the highest priority to address. Additional detail on the projects can be found below:

- **Low-Income Grant Program for Small Business Recovery:** This project would provide funding for recovery assistance to businesses that did not qualify for Small Business Association (SBA) loans or other recovery programs for non-residential uses. There are many small businesses in Edgecombe County, and because of the lower-income profile of households, many of these businesses do not have the excess capital to bear the impacts of the storm. Impacts to small businesses included damaged infrastructure, damaged capital investments—both real and other property, lost inventory, lost revenues from both displaced customers and business disruption, payments to employees who were not able to work, and disrupted operations from employees being unable to get to work.
- **This is a county-wide project, so no project area map has been included.**

Edgecombe Economic Development Action 4: Low-Income Grant Program for Small Business Recovery

County: Edgecombe

Priority Grouping: High Priority

Priority Ranking: 7

Project Timeframe: Unknown

Location: County-wide

Project Summary: This project would provide funding for recovery assistance to businesses that did not qualify for SBA loans or other recovery programs for non-residential uses. There are many small businesses in Edgecombe County, and because of the lower-income profile of county households, many of these businesses do not have the excess capital to bear the impacts of the storm. Impacts to small businesses included damaged infrastructure, damaged capital investments—both real and other property, lost inventory, lost revenues from both displaced customers and business disruption, payments to employees who were not able to work.

Question	Response	Disposition
Articulate how this project addresses an unmet need that has been created by damage from Hurricane Matthew.	Numerous businesses suffered damage during Hurricane Matthew and in some cases also sustained damage during Hurricane Floyd from which they rebuilt and recovered only to be damaged again by Hurricane Matthew.	N/A
Consistent with existing plans (describe points of intersection/departure)	N/A	Agree
Does this project comply with existing Local and State authority (codes, plan and ordinance)?	Yes	Agree
Does this project meet the intents and goals for the Hurricane Matthew Recovery Act?	Yes	Agree
Explain any benefits or impacts to the economy of the county from this project.	This program would in some cases prevent enterprises from going out of business preventing lost employment as well as lost services for residents in some areas.	Agree
For how long will this solution be effective?	Between 11 and 30 years	Agree
How effective is the risk reduction?	Unknown	Agree
How many public facilities are involved in this project (buildings and infrastructure)?	0	Agree
Is coordination with other communities/counties needed to complete this project?	No	Agree
Is this project consistent with Federal Laws	Yes	Agree
To what degree does this project adversely impact local floodplain/coastal zone management?	No Impact	Agree
To what degree will it be possible to positively quantify the environmental benefits and ROI of this project?	Unknown	N/A
What impact will this action have on the local economy/tax base?	Unknown	Agree
What impacts to the environment of the county will result from this project?	N/A	N/A
What is the capability of the local government to administer this project?	Unknown	Agree
What is the financial range of this project?	\$1M+	Agree
What is the level of public support for this project?	High	Agree
What is the technical feasibility of this project?	Unknown	Agree
Who will administer this project?	Unknown	Agree

- **Pilot Tree-to-Timber Program:** This project would identify parcels owned by the county through buyouts that can be planted and used for timber-lands/woody biomass and/or wood pellet production. The pilot project would investigate the operations and feasibility of such a program. In this project, the county would participate in cost and profit-sharing, potentially through state-led programs or in public-private partnerships with timber/biomass/pellet producing companies and put unutilized parcels into productive use and expand the tax base of the county.
- **This is a county-wide project, so no project area map has been included.**

Edgecombe Economic Development Action 5: Pilot Tree-to-Timber Program

County: Edgecombe

Priority Grouping: High Priority

Priority Ranking: 8

Project Timeframe: Unknown

Location: County-wide

Project Summary: As a component of an open space plan, identify parcels owned by the county through buyouts, that can be planted and used for timber-lands and/or woody biomass production. Investigate the operations and feasibility of such a program and develop a pilot program. In this program, the county would participate in cost and profit sharing, potentially through state-led programs or in public-private partnerships with timber/biomass producing companies.

Question	Response	Disposition
Articulate how this project addresses an unmet need that has been created by damage from Hurricane Matthew.	Both Hurricane Matthew and Hurricane Floyd endowed the county with parcels that are now vacant through buyouts. This land cannot be utilized for occupied space and therefore does not produce benefits to the local economy and tax base.	N/A
Consistent with existing plans (describe points of intersection/departure)	N/A	Agree
Does this project comply with existing Local and State authority (codes, plan and ordinance)?	Yes	Agree
Does this project meet the intents and goals for the Hurricane Matthew Recovery Act?	Yes	Agree
Explain any benefits or impacts to the economy of the county from this project.	This project would take land that is currently not utilized or underutilized and turn it into productive land producing additional revenues for the county that would provide funds for county operations as well as lessen the tax burden on residents.	Agree
For how long will this solution be effective?	Between 11 and 30 years	Agree
How effective is the risk reduction?	Unknown	Agree
How many public facilities are involved in this project (buildings and infrastructure)?	0	Agree
Is coordination with other communities/counties needed to complete this project?	No	Agree
Is this project consistent with Federal Laws	Yes	Agree
To what degree does this project adversely impact local floodplain/coastal zone management?	No Impact	Agree
To what degree will it be possible to positively quantify the environmental benefits and ROI of this project?	Unknown	N/A
What impact will this action have on the local economy/tax base?	Unknown	Agree
What impacts to the environment of the county will result from this project?	Planting land that is currently vacant and within flood-prone areas would have the added benefit of slowing erosion and flooding.	N/A
What is the capability of the local government to administer this project?	Medium	Agree
What is the financial range of this project?	\$501K - \$1M	Agree
What is the level of public support for this project?	Medium	Agree
What is the technical feasibility of this project?	Unknown	Agree
Who will administer this project?	Unknown	Agree

Medium Priority Economic Development Strategies

Pillar	Action Name	Priority	Overall Ranking
Economic Development	Edgecombe Economic Development Action 7: Vegetable Crop Disaster Assistance (NAP Crops)	Medium	15
Economic Development	Edgecombe Economic Development Action 6: Agriculture Buyout of Facilities	Medium	17
Economic Development	Edgecombe Economic Development Action 8: Develop new/beginning farming operations	Medium	18

Table 10. Edgecombe Medium Priority Economic Development Summary

These three projects represent the economic development strategies that Edgecombe County indicated are of a medium priority to address. Additional detail on the projects can be found below:

- **Vegetable Crop Disaster Assistance (NAP Crops):** This project would help crop producers with revenue assistance up to 85% of county yield and 100% of county price. Sweet potatoes were the most impacted crop in Edgecombe County. Current insurance only covers 50% production at 50% of the price.
- **This is a county-wide project, so no project area map has been included.**

Edgecombe Economic Development Action 7: Vegetable Crop Disaster Assistance (NAP Crops)

County: Edgecombe

Priority Grouping: Medium Priority

Priority Ranking: 15

Project Timeframe: Unknown

Location: Edgecombe County

Project Summary: This project would help producers with revenue assistance up to 85% of county yield and 100% of county price. Sweet potatoes were the most impacted crop. Current insurance only covers 50% production at 50% of the price.

Question	Response	Disposition
Articulate how this project addresses an unmet need that has been created by damage from Hurricane Matthew.	This project would fill a gap for the most impacted farmers in Edgecombe county that only received 50 percent of the damaged crop at 50 percent of its value thus providing nearly full compensation of their sweet potato crop.	N/A
Consistent with existing plans (describe points of intersection/departure)	Yes	Agree
Does this project comply with existing Local and State authority (codes, plan and ordinance)?	Yes	Agree
Does this project meet the intents and goals for the Hurricane Matthew Recovery Act?	Yes	Agree
Explain any benefits or impacts to the economy of the county from this project.	Positive economic impact to tax base and impacted farmers.	Agree
For how long will this solution be effective?	Less than 10 years	Agree
How effective is the risk reduction?	Unknown	Agree
How many public facilities are involved in this project (buildings and infrastructure)?	0	Agree
Is coordination with other communities/counties needed to complete this project?	No	Agree
Is this project consistent with Federal Laws	Yes	Agree
To what degree does this project adversely impact local floodplain/coastal zone management?	No Impact	Agree
To what degree will it be possible to positively quantify the environmental benefits and ROI of this project?	Unknown	N/A
What impact will this action have on the local economy/tax base?	Unknown	Agree
What impacts to the environment of the county will result from this project?	N/A	N/A
What is the capability of the local government to administer this project?	Medium	Agree
What is the financial range of this project?	\$251K - \$500K	Agree
What is the level of public support for this project?	Medium	Agree
What is the technical feasibility of this project?	Unknown	Agree
Who will administer this project?	Unknown	Agree

- **Agriculture Buyout of Facilities:** The project funds a program that would either buyout or mitigate facilities or properties that Hurricane Matthew, storms and water intrusion impact. Animal operations receive priority, but the program could assist with other infrastructure.
- **This is a county-wide project, so no project area map has been included.**

Edgecombe Economic Development Action 6: Agriculture Buy out of Facilities

County: Edgecombe

Priority Grouping: Medium Priority

Priority Ranking: 17

Project Timeframe: Undetermined at this time.

Location: Edgecombe County

Project Summary: The project funds a program that would either buyout or mitigates facilities or properties that water intrusion regularly impacts. Animal operations receive priority, but the program could assist with other facilities.

Question	Response	Disposition
Articulate how this project addresses an unmet need that has been created by damage from Hurricane Matthew.	This project would assist agriculture facilities that currently have no assistance for relocation. Existing programs provide residents with assistance for residential buyouts not agricultural buyouts or mitigation.	N/A
Consistent with existing plans (describe points of intersection/departure)	Yes	Agree
Does this project comply with existing Local and State authority (codes, plan and ordinance)?	Yes	Agree
Does this project meet the intents and goals for the Hurricane Matthew Recovery Act?	Yes	Agree
Explain any benefits or impacts to the economy of the county from this project.	Potential loss of county tax revenues	Agree
For how long will this solution be effective?	Between 11 and 30 years	Agree
How effective is the risk reduction?	Unknown	Agree
How many public facilities are involved in this project (buildings and infrastructure)?	0	Agree
Is coordination with other communities/counties needed to complete this project?	No	Agree
Is this project consistent with Federal Laws	Yes	Agree
To what degree does this project adversely impact local floodplain/coastal zone management?	No Impact	Agree
To what degree will it be possible to positively quantify the environmental benefits and ROI of this project?	Unknown	N/A
What impact will this action have on the local economy/tax base?	Unknown	Agree
What impacts to the environment of the county will result from this project?	Relocation of animal facilities outside of the floodplain can mitigate future contamination and impacts to water quality from farm operations.	N/A
What is the capability of the local government to administer this project?	Medium	Agree
What is the financial range of this project?	\$501K - \$1M	Agree
What is the level of public support for this project?	Medium	Agree
What is the technical feasibility of this project?	Unknown	Agree
Who will administer this project?	Unknown	Agree

- **Develop new/beginning farming operations:** This project would encourage small-scale agricultural operations throughout Edgecombe and Nash Counties in conjunction with NC State University and NC A&T State University Cooperative Extension to provide training through a Small Farms Agent.
- **This is a county-wide project, so no project area map has been included.**

Edgecombe Economic Development Action 8: Develop new/beginning farming operations

County: Edgecombe

Priority Grouping: Medium Priority

Priority Ranking: 18

Project Timeframe: Unknown

Location: Edgecombe County

Project Summary: This project would encourage small-scale agricultural operations throughout Edgecombe and Nash Counties in conjunction with NC State University and NC A&T State University Cooperative Extension to provide training through a Small Farms Agent.

Question	Response	Disposition
Articulate how this project addresses an unmet need that has been created by damage from Hurricane Matthew.	This project would provide training to an important industry where there is currently a gap in assisting small farmers and those interested in small scale agriculture in Edgecombe and Nash counties.	N/A
Consistent with existing plans (describe points of intersection/departure)	Yes	Agree
Does this project comply with existing Local and State authority (codes, plan and ordinance)?	Yes	Agree
Does this project meet the intents and goals for the Hurricane Matthew Recovery Act?	Yes	Agree
Explain any benefits or impacts to the economy of the county from this project.	Benefits accrue to the regional agricultural industry and resident interested in farming through training and assistance.	Agree
For how long will this solution be effective?	Less than 10 years	Agree
How effective is the risk reduction?	Unknown	Agree
How many public facilities are involved in this project (buildings and infrastructure)?	0	Agree
Is coordination with other communities/counties needed to complete this project?	Yes	Agree
Is this project consistent with Federal Laws	Yes	Agree
To what degree does this project adversely impact local floodplain/coastal zone management?	No Impact	Agree
To what degree will it be possible to positively quantify the environmental benefits and ROI of this project?	Unknown	N/A
What impact will this action have on the local economy/tax base?	Unknown	Agree
What impacts to the environment of the county will result from this project?	N/A	N/A
What is the capability of the local government to administer this project?	Medium	Agree
What is the financial range of this project?	\$251K - \$500K	Agree
What is the level of public support for this project?	Medium	Agree
What is the technical feasibility of this project?	Unknown	Agree
Who will administer this project?	Unknown	Agree

Low Priority Economic Development Strategies

Pillar	Action Name	Priority	Overall Ranking
Economic Development	Edgecombe Economic Development Action 3: Sustainable Tourism Development and Marketing	Low	27
Economic Development	Edgecombe Economic Development Action 1: Sustainable Tourism Development Visitor Center and Interpretive Trails	Low	28
Economic Development	Edgecombe Economic Development Action 2: Development of River Paddle and Walking/Biking Trails	Low	29

Table 11. Edgecombe Low Priority Economic Development Summary

- **Sustainable Tourism Development and Marketing:** This project would fund a targeted tourism study update to identify key projects from the existing tourism plan—or new projects—to prioritize for future funding and a marketing strategy. This project will fund an initial marketing campaign to highlight existing tourism assets and events with billboards on US 64, targeted features in local media, and a heritage brochure.
- **This is a county-wide project, so no project area map has been included.**

Edgecombe Economic Development Action 3: Sustainable Tourism Development and Marketing

County: Edgecombe

Priority Grouping: Low Priority

Priority Ranking: 27

Project Timeframe: Unknown

Location: County-wide

Project Summary: Edgecombe County tourism was impacted negatively by Hurricane Matthew. While there is a tourism plan that was developed in 2008, few projects have been implemented to their fullest extent due to lack of funding. Tourism is an industry that has potential for further development. Currently, the Edgecombe County Tourism Authority is not adequately funded to perform marketing services. This project would fund an initial staff person and marketing/advertising budget for a 5-year time frame, with the specific task of visitor attraction and fundraising for future operations. This project would also fund a targeted tourism study update to identify key projects from the existing tourism plan—or new projects—to prioritize for future funding and a marketing strategy.

Question	Response	Disposition
Articulate how this project addresses an unmet need that has been created by damage from Hurricane Matthew.	Tourism to the county during and after Hurricane Matthew was restricted both by damaged infrastructure and by local visitors' reduced resources for discretionary spending.	N/A
Consistent with existing plans (describe points of intersection/departure)	There is an existing tourism plan developed in 2008 but implementation has been slowed by lack of available funds.	Agree
Does this project comply with existing Local and State authority (codes, plan and ordinance)?	Yes	Agree
Does this project meet the intents and goals for the Hurricane Matthew Recovery Act?	Yes	Agree
Explain any benefits or impacts to the economy of the county from this project.	US 64 is a major approach route for beach communities from points west and provides a market for initial capture of traffic. However future development could draw additional visitors.	Agree
For how long will this solution be effective?	Between 11 and 30 years	Agree
How effective is the risk reduction?	Unknown	Agree
How many public facilities are involved in this project (buildings and infrastructure)?	1-3	Agree
Is coordination with other communities/counties needed to complete this project?	No	Agree
Is this project consistent with Federal Laws	Yes	Agree
To what degree does this project adversely impact local floodplain/coastal zone management?	No Impact	Agree
To what degree will it be possible to positively quantify the environmental benefits and ROI of this project?	Unknown	N/A
What impact will this action have on the local economy/tax base?	Unknown	Agree
What impacts to the environment of the county will result from this project?	N/A	N/A
What is the capability of the local government to administer this project?	Medium	Agree
What is the financial range of this project?	\$251K - \$500K	Agree
What is the level of public support for this project?	Medium	Agree
What is the technical feasibility of this project?	Unknown	Agree
Who will administer this project?	Local	Agree

- **Sustainable Tourism Development Visitor Center and Interpretive Trails:** Tourism is an industry that has potential for further development. This project would start with a targeted study to identify key projects from the existing tourism plan. It would also assist in restoring tourism infrastructure affected by Hurricane Matthew and enhance understanding of the county's history with storms. Projects would include the following:
 - Redevelopment of the historic town hall of Princeville (former school and current town hall/visitor center/museum) into a flood-resistant visitors center/museum with exhibits on both the town's history, the history of African-Americans, and the resilience of Edgecombe County in the face of disaster, with an educational component on environmental/ecological and disaster recovery.
 - Development of interpretive trails county wide.
 - Development of the historic site at Shiloh Landing.
 - Development of historic Douglas Block site in Rocky Mount.

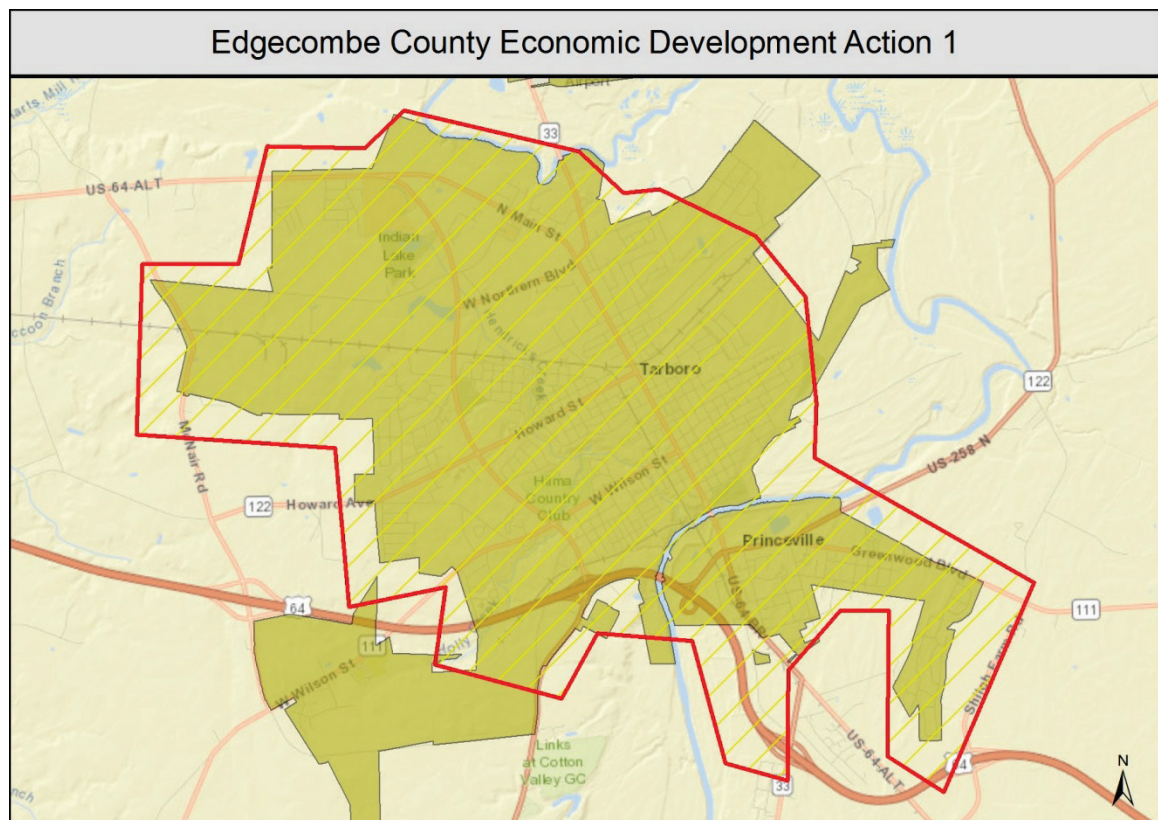


Figure 19. Economic Development Action 1: Sustainable Tourism Development

Edgecombe Economic Development Action 1: Sustainable Tourism Development Visitor Center and Interpretive Trails

County: Edgecombe

Priority Grouping: Low Priority

Priority Ranking: 28

Project Timeframe: Unknown

Location: Princeville, Tarboro and County-wide

Project Summary: This project would start with a targeted study to identify key projects from the existing tourism plan. Projects would include the following:

- Redevelopment of the historic town hall (former school and current town hall/visitor center/museum) into a flood-resistant visitors center/museum for Princeville
- Interpretive trails county-wide
- Development of the historic site at Shiloh Landing
- Development of historic Douglas Block site in Rocky Mount

Question	Response	Disposition
Articulate how this project addresses an unmet need that has been created by damage from Hurricane Matthew.	Education about the impacts of storms and the recovery process of Princeville and Edgecombe County will inform the community and visitors about the impacts of the storms.	N/A
Consistent with existing plans (describe points of intersection/departure)	There is an existing tourism plan developed in 2008 but implementation has been slowed by lack of available funds.	Agree
Does this project comply with existing Local and State authority (codes, plan and ordinance)?	Yes	Agree
Does this project meet the intents and goals for the Hurricane Matthew Recovery Act?	Yes	Agree
Explain any benefits or impacts to the economy of the county from this project.	US 64 is a major route for beach communities from points west and provides a market for initial capture of pass-through traffic.	Agree
For how long will this solution be effective?	More than 50 years	Agree
How effective is the risk reduction?	Unknown	Agree
How many public facilities are involved in this project (buildings and infrastructure)?	4-6	Agree
Is coordination with other communities/counties needed to complete this project?	No	Agree
Is this project consistent with Federal Laws	Yes	Agree
To what degree does this project adversely impact local floodplain/coastal zone management?	No Impact	Agree
To what degree will it be possible to positively quantify the environmental benefits and ROI of this project?	Unknown	N/A
What impact will this action have on the local economy/tax base?	Unknown	Agree
What impacts to the environment of the county will result from this project?	The interpretive trail would be established on current trails sidewalks and parking lots.	N/A
What is the capability of the local government to administer this project?	Unknown	Agree
What is the financial range of this project?	\$1M+	Agree
What is the level of public support for this project?	High	Agree
What is the technical feasibility of this project?	Unknown	Agree
Who will administer this project?	Unknown	Agree

- **Development of River Paddle and Walking/Biking Trails:** Ecotourism on the Tar River has potential for further development. The Tar River has an existing paddle trail that goes through Edgecombe County. One of the identified put-in areas is at Riverside Park. This project would seek to enhance services and entice paddlers to spend additional time in Edgecombe County and spend additional money in the community. Projects would include the following:
 - Princeville Heritage Trail and Riverside Park improvements and connection with the Tarboro National Recreation Trail and proposed heritage interpretive trail.
 - Tar River paddle put-in improvements at Riverside Park with a dock.
 - Start-up costs for a county-run river services rental/retail facility.
- **This is a project with multiple disparate locations, so no project area map has been included.**

Edgecombe Economic Development Action 2: Development of River Paddle and Walking/Biking Trails

County: Edgecombe

Priority Grouping: Low Priority

Priority Ranking: 29

Project Timeframe: Undetermined at this time

Location: County-wide

Project Summary: This project would seek to enhance services and entice paddlers to spend additional time in Edgecombe County and spend additional money in the community.

- Princeville Heritage Trail and Riverside Park improvements and connection with the Tarboro National Recreation Trail and proposed heritage interpretive trail.
- Tar River paddle put-in improvements at Riverside Park with a dock.
- Start-up costs for a county-run river services rental/retail facility (\$50,000).

Question	Response	Disposition
Articulate how this project addresses an unmet need that has been created by damage from Hurricane Matthew.	This project will provide boat launch and ecotourism infrastructure that does not exist as the county has no park facilities.	N/A
Consistent with existing plans (describe points of intersection/departure)	There is an existing tourism plan developed in 2008 but implementation has been slowed by lack of available funds.	Agree
Does this project comply with existing Local and State authority (codes, plan and ordinance)?	Yes	Agree
Does this project meet the intents and goals for the Hurricane Matthew Recovery Act?	Yes	Agree
Explain any benefits or impacts to the economy of the county from this project.	US 64 is a major approach route for beach communities from points west and provides a market for initial capture of pass-through traffic.	Agree
For how long will this solution be effective?	Between 11 and 30 years	Agree
How effective is the risk reduction?	Unknown	Agree
How many public facilities are involved in this project (buildings and infrastructure)?	1-3	Agree
Is coordination with other communities/counties needed to complete this project?	No	Agree
Is this project consistent with Federal Laws	Yes	Agree
To what degree does this project adversely impact local floodplain/coastal zone management?	No Impact	Agree
To what degree will it be possible to positively quantify the environmental benefits and ROI of this project?	Medium to high confidence	N/A
What impact will this action have on the local economy/tax base?	Unknown	Agree
What impacts to the environment of the county will result from this project?	Trail improvements can ensure the areas do not suffer from erosion or damage from overuse.	N/A
What is the capability of the local government to administer this project?	Medium	Agree
What is the financial range of this project?	\$501K - \$1M	Agree
What is the level of public support for this project?	Medium	Agree
What is the technical feasibility of this project?	Unknown	Agree
Who will administer this project?	County	Agree

Infrastructure Strategies

High Priority Infrastructure Strategies

Pillar	Action Name	Priority	Overall Ranking
Infrastructure	Edgecombe Infrastructure Action 6: Levee Repair	High	1
Infrastructure	Edgecombe Infrastructure Action 7: Repair Sewer Lift Stations	High	2
Infrastructure	Edgecombe Infrastructure Action 5: Stormwater Assessment and Improvements	High	6
Infrastructure	Edgecombe Infrastructure Action 4: Pinetops and Tarboro Wastewater Treatment Facilities	High	11

Table 12. Edgecombe High Priority Infrastructure Summary

These projects represent the infrastructure strategies that Edgecombe County indicated are the highest priority to address. Additional detail can be found below:

- Levee Repair:** This USACE project would provide recommended plan elements:
 - Flap gates on 12 culverts to address flood flow penetration along US 64 and NC 111
 - Modify the intersection of NC 33 and US 64 to address flood flow entry via underpass
 - Installation of shoulder levee along low spot on US 64
 - Extension of existing levee at northern-most terminus of NC 258 to the east, and then south to the southern terminus of the project

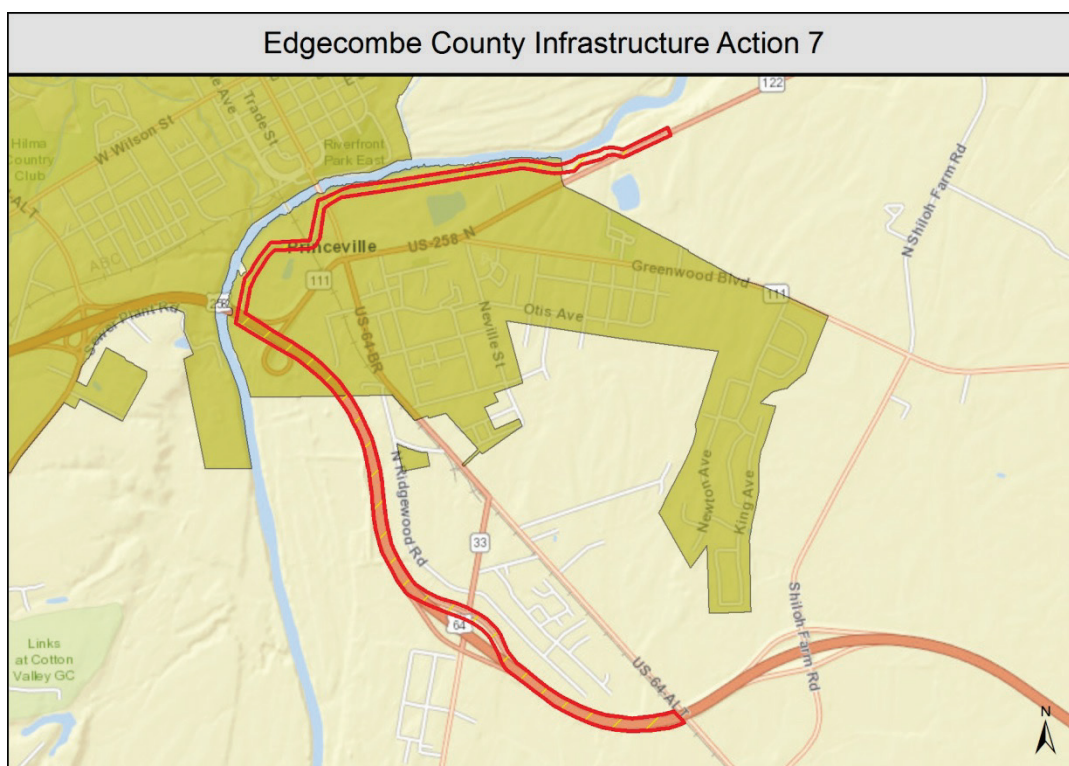


Figure 20. Infrastructure Action 7: Levee Repair

Edgecombe Infrastructure Action 6: Levee Repair

County: Edgecombe

Priority Grouping: High Priority

Priority Ranking: 1

Project Timeframe: .10 years

Location: Princeville

Project Summary: This USACE project would provide recommended plan elements:

- o Flap gates on 12 culverts to address flood flow penetration along US 64 and NC 111
- o Modify the intersection of NC 33 and US 64 to address flood flow entry via underpass
- o Installation of shoulder levee along low spot on US 64
- o Extension of existing levee at northern-most terminus of NC 258 to the east, and then south to the southern terminus of the project

Question	Response	Disposition
Articulate how this project addresses an unmet need that has been created by damage from Hurricane Matthew.	Princeville has identified the levee repair project as an unmet need for the historic community and has repeatedly experience hardship from storm and hurricane events. This project could if implemented protect the town from future flooding.	N/A
Consistent with existing plans (describe points of intersection/departure)	Yes	Agree
Does this project comply with existing Local and State authority (codes, plan and ordinance)?	Yes	Agree
Does this project meet the intents and goals for the Hurricane Matthew Recovery Act?	Yes	Agree
Explain any benefits or impacts to the economy of the county from this project.	Reduce flooding risk to Town of Princeville	Agree
For how long will this solution be effective?	Between 11 and 30 years	Agree
How effective is the risk reduction?	50-100 year event	Agree
How many public facilities are involved in this project (buildings and infrastructure)?	>6	Agree
Is coordination with other communities/counties needed to complete this project?	No	Agree
Is this project consistent with Federal Laws	Yes	Agree
To what degree does this project adversely impact local floodplain/coastal zone management?	No Impact	Agree
To what degree will it be possible to positively quantify the environmental benefits and ROI of this project?	High confidence	N/A
What impact will this action have on the local economy/tax base?	Between 51 and 75%	Agree
What impacts to the environment of the county will result from this project?	N/A	N/A
What is the capability of the local government to administer this project?	Low	Agree
What is the financial range of this project?	\$1M+	Agree
What is the level of public support for this project?	High	Agree
What is the technical feasibility of this project?	Between 51 and 75%	Agree
Who will administer this project?	State	Agree

- **Repair Sewer Lift Stations:** This project would repair lift stations damaged throughout Edgecombe County. The project outcomes include increased resiliency of the wastewater system infrastructure to address problems that occurred during the flooding of Hurricane Matthew, as well as improved water quality. The lift stations damaged include:
 - The Sewer Lift Stations that had damage are listed below.
 - In The Curve Lift Station - motors and relays damaged - generator was damaged.
 - Greenwood Lift Station - motors and relays damaged - generator was damaged.
 - Church St. Lift Station - motors and relays damaged - generator was damaged.
 - Freedom Hill Lift Station - generator damaged.
 - Lakeside Lift Station - generator damaged.
 - Coker-Wimberly Lift Station - generator damaged.
 - **This is a county-wide project with multiple locations, so no project area map has been included.**

Edgecombe Infrastructure Action 7: Repair Sewer Lift Stations

County: Edgecombe

Priority Grouping: High Priority

Priority Ranking: 2

Project Timeframe: 1 year

Location: County wide

Project Summary: This project would repair lift stations damaged throughout Edgecombe County. The lift stations damaged include:

- In The Curve Lift Station - motors and relays damaged - generator was damaged.
- Greenwood Lift Station - motors and relays damaged - generator was damaged.
- Church St. Lift Station - motors and relays damaged - generator was damaged.
- Freedom Hill Lift Station - generator damaged.
- Lakeside Lift Station - generator damaged.
- Coker-Wimberly Lift Station - generator damaged.

Question	Response	Disposition
Articulate how this project addresses an unmet need that has been created by damage from Hurricane Matthew.	Without improvements to the systems the county is susceptible to the same type of impact during future storms.	N/A
Consistent with existing plans (describe points of intersection/departure)	Yes	Agree
Does this project comply with existing Local and State authority (codes, plan and ordinance)?	Yes	Agree
Does this project meet the intents and goals for the Hurricane Matthew Recovery Act?	Yes	Agree
Explain any benefits or impacts to the economy of the county from this project.	Protecting community health and providing necessary wastewater service to the local community is directly beneficial to the local economy.	Agree
For how long will this solution be effective?	Between 11 and 30 years	Agree
How effective is the risk reduction?	50-100 year event	Agree
How many public facilities are involved in this project (buildings and infrastructure)?	>6	Agree
Is coordination with other communities/counties needed to complete this project?	No	Agree
Is this project consistent with Federal Laws	Yes	Agree
To what degree does this project adversely impact local floodplain/coastal zone management?	No Impact	Agree
To what degree will it be possible to positively quantify the environmental benefits and ROI of this project?	High confidence	N/A
What impact will this action have on the local economy/tax base?	Between 51 and 75%	Agree
What impacts to the environment of the county will result from this project?	The improvements to the wastewater treatment facility operations would protect water quality by limiting discharges into receiving waters.	N/A
What is the capability of the local government to administer this project?	High	Agree
What is the financial range of this project?	\$501K - \$1M	Agree
What is the level of public support for this project?	High	Agree
What is the technical feasibility of this project?	Between 51 and 75%	Agree
Who will administer this project?	County	Agree

- **Stormwater Assessment and Improvements:** This project will address three problem areas in the county where an assessment of storm water issues is needed. This project would include an engineering assessment of the storm water and drainage problems in specified areas of Princeville, Bynum Farm Road and the southwest quadrant of the county, recommend improvements and design and build proposed storm water infrastructure.

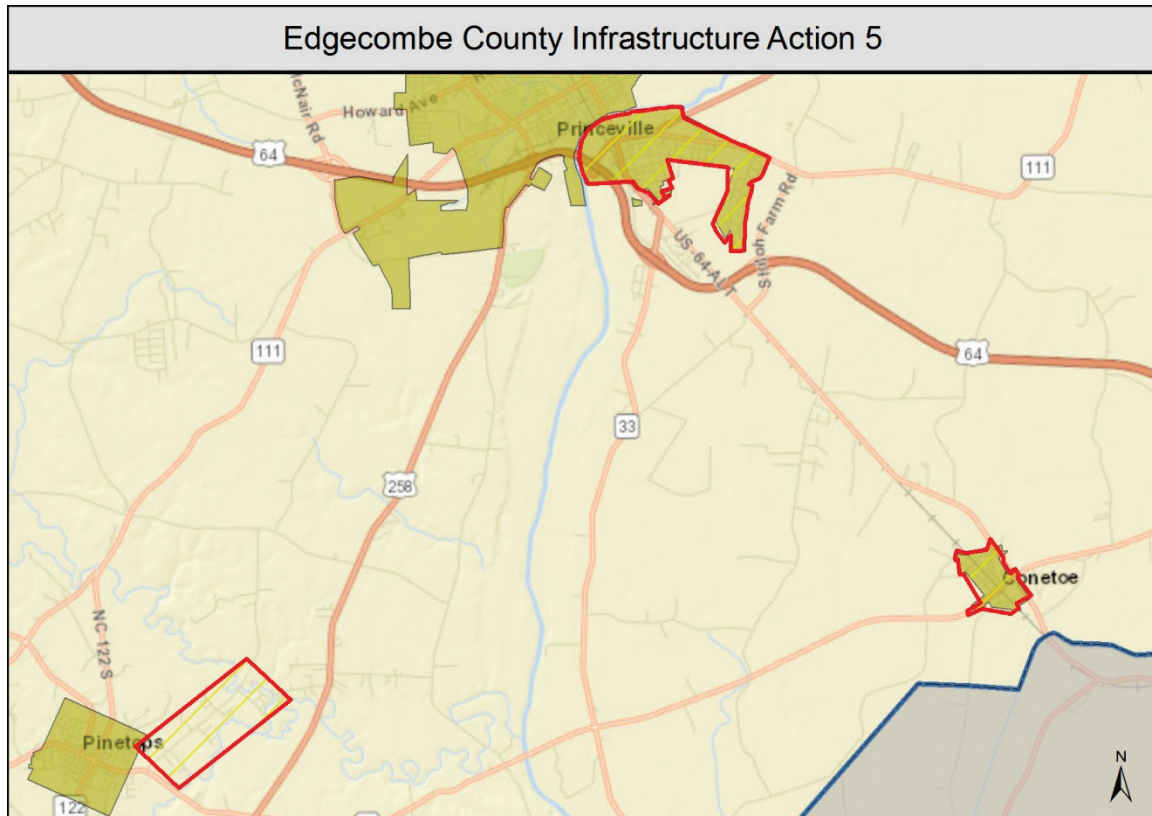


Figure 21. Infrastructure Action 5: Stormwater Assessment and Improvements

Edgecombe Infrastructure Action 5: Stormwater Assessment and Improvements

County: Edgecombe

Priority Grouping: High Priority

Priority Ranking: 6

Project Timeframe: Approximately two years

Location: Princeville, Bynum Farm Road and the southwest quadrant of the county that encompasses an agriculture district (approximately 100 acres of farmland).

Project Summary: This project will address three problem areas in the county where an assessment of storm water issues is needed. This project would include an engineering assessment of the storm water and drainage problems in specified areas of Princeville, Bynum Farm Road and the southwest quadrant of the county, recommend improvements and design and build proposed storm water infrastructure.

Question	Response	Disposition
Articulate how this project addresses an unmet need that has been created by damage from Hurricane Matthew.	Currently three areas of the county have been identified as being especially flood prone and require an assessment of the drainage issues .	N/A
Consistent with existing plans (describe points of intersection/departure)	Consistent with existing plans.	Agree
Does this project comply with existing Local and State authority (codes, plan and ordinance)?	Yes	Agree
Does this project meet the intents and goals for the Hurricane Matthew Recovery Act?	Yes	Agree
Explain any benefits or impacts to the economy of the county from this project.	Improved drainage will reduce flooding impacts to productive farmland preserve the county tax base and prevent damage to infrastructure housing and economic assets of the county.	Agree
For how long will this solution be effective?	Between 11 and 30 years	Agree
How effective is the risk reduction?	Unknown	Agree
How many public facilities are involved in this project (buildings and infrastructure)?	1-3	Agree
Is coordination with other communities/counties needed to complete this project?	No	Agree
Is this project consistent with Federal Laws	Yes	Agree
To what degree does this project adversely impact local floodplain/coastal zone management?	No Impact	Agree
To what degree will it be possible to positively quantify the environmental benefits and ROI of this project?	Medium to high confidence	N/A
What impact will this action have on the local economy/tax base?	Between 26 and 50%	Agree
What impacts to the environment of the county will result from this project?	Storm water improvements will result in improvements to water quality.	N/A
What is the capability of the local government to administer this project?	Medium	Agree
What is the financial range of this project?	\$1M+	Agree
What is the level of public support for this project?	Medium	Agree
What is the technical feasibility of this project?	Higher than 75%	Agree
Who will administer this project?	Unknown	Agree

- **Increase Pinetops and Tarboro Wastewater Treatment Facilities Capacity:** The project would assess capacity and needed improvements in order to limit discharges to receiving waters and protect water quality. In addition, barriers/fortifications would be provided along with watertight doors to prevent flooding of the treatment facility and provide backup generators to further prevent water pollution from wastewater discharges.

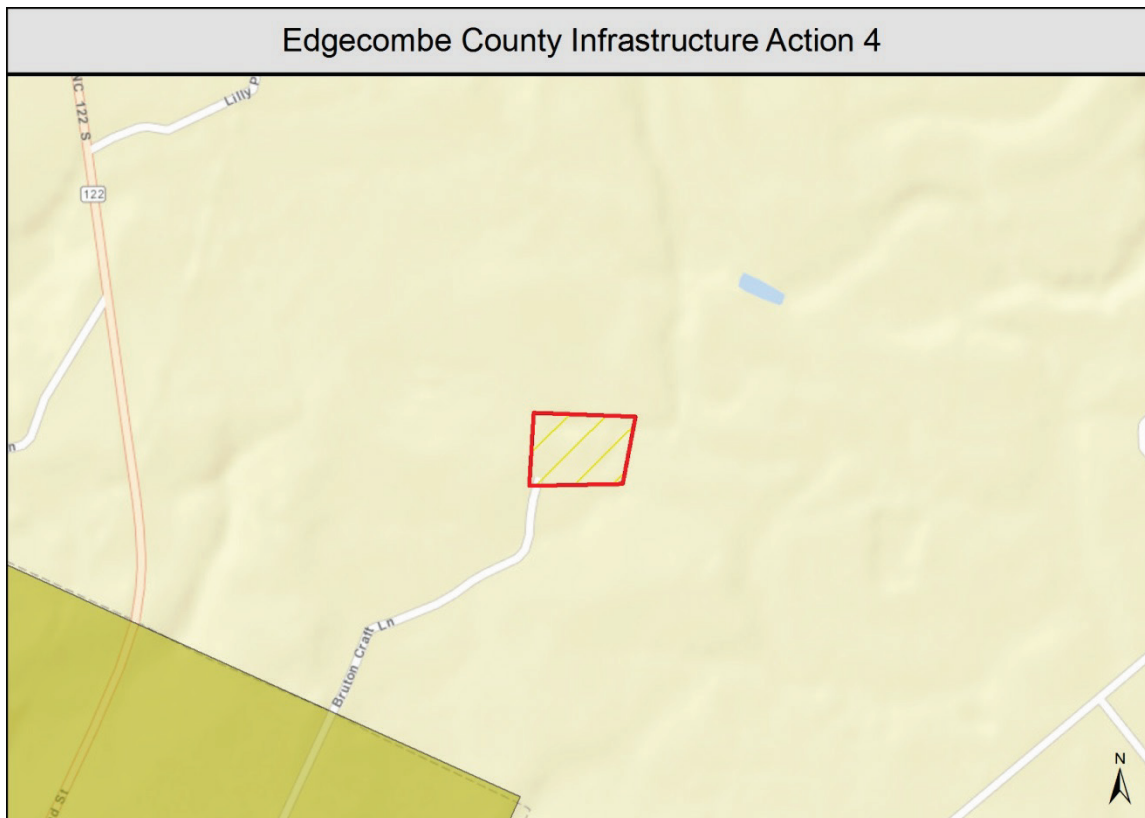


Figure 22. Infrastructure Action 4: Pinetops and Tarboro Wastewater Treatment Facilities

Edgecombe Infrastructure Action 4: Pinetops Wastewater Treatment Facility

County: Edgecombe

Priority Grouping: High Priority

Priority Ranking: 11

Project Timeframe: Undetermined at this time.

Location: County-wide

Project Summary: The Pinetops Wastewater Treatment Facility had to be temporarily closed during Hurricane Matthew as the volume of wastewater exceeded the facility's capacity. The project would assess capacity and needed improvements in order to limit discharges during flooding event to receiving waters and protect water quality. In addition, barriers/fortifications would be provided along with watertight doors to prevent flooding of the treatment facility and provide elevated backup generators to keep the plant in operation and prevent water pollution from wastewater discharges.

Question	Response	Disposition
Articulate how this project addresses an unmet need that has been created by damage from Hurricane Matthew.	Without improvements to this facility the county is susceptible to the same type of impact during future storms.	N/A
Consistent with existing plans (describe points of intersection/departure)	Yes	Agree
Does this project comply with existing Local and State authority (codes, plan and ordinance)?	Yes	Agree
Does this project meet the intents and goals for the Hurricane Matthew Recovery Act?	Yes	Agree
Explain any benefits or impacts to the economy of the county from this project.	Protecting water quality as a result of this project is directly related to the local economy that depends on clean water for recreation.	Agree
For how long will this solution be effective?	Between 11 and 30 years	Agree
How effective is the risk reduction?	50-100 year event	Agree
How many public facilities are involved in this project (buildings and infrastructure)?	1-3	Agree
Is coordination with other communities/counties needed to complete this project?	Yes	Agree
Is this project consistent with Federal Laws	Yes	Agree
To what degree does this project adversely impact local floodplain/coastal zone management?	No Impact	Agree
To what degree will it be possible to positively quantify the environmental benefits and ROI of this project?	Medium to high confidence	N/A
What impact will this action have on the local economy/tax base?	Unknown	Agree
What impacts to the environment of the county will result from this project?	The improvements to the wastewater treatment facility would protect water quality by limiting discharges into these waters.	N/A
What is the capability of the local government to administer this project?	Medium	Agree
What is the financial range of this project?	\$501K - \$1M	Agree
What is the level of public support for this project?	Medium	Agree
What is the technical feasibility of this project?	Higher than 75%	Agree
Who will administer this project?	Local	Agree

Medium Priority Infrastructure Strategies

Pillar	Action Name	Priority	Overall Ranking
Infrastructure	Edgecombe Infrastructure Action 1: Farm Assistance	Medium	14
Infrastructure	Edgecombe Infrastructure Action 2: Water/Sewer Line and Culvert Repair and Replacement	Medium	16

Table 13. Edgecombe Medium Priority Infrastructure Summary

This project represents the infrastructure strategy that Edgecombe County indicated is of a medium priority to address. Additional detail can be found below:

- Farm Infrastructure Assistance :** This project proposes a partnership with the North Carolina Department of Agriculture Division of Soil and Water Program to assist producers/landowners with repairs/replacements of farm paths, culverts, bridges, ponds, etc. that are not covered under the federal emergency conservation program (ECP) up to 75% of costs. This program can also provide assistance for removal of berms in agriculture fields that may contribute to flooding and interfere with the repair of farm roads damaged during Hurricane Matthew. Approximately 150-175 farms would be assisted by this project.
- This is a county-wide project, so no project area map has been included.**

Edgecombe Infrastructure Action 1: Farm Infrastructure Assistance

County: Edgecombe

Priority Grouping: Medium Priority

Priority Ranking: 14

Project Timeframe: Undetermined at this time.

Location: County-wide

Project Summary: Assist producers/landowners with repairs/replacements of farm paths, culverts, bridges, ponds, etc. that are not covered under the federal emergency conservation program (ECP) up to 75% of costs. Partner with the North Carolina Department of Agriculture Division of Soil and Water Conservation's Stream Debris Removal Project. The project removes vegetative storm debris blocking streams and drainage systems in the aftermath of storms for farms, farm berms, and farm roads as well as town drainage swales and storm drains. Removing debris can decrease future flooding.

Question	Response	Disposition
Articulate how this project addresses an unmet need that has been created by damage from Hurricane Matthew.	This project would address this issue by removing the debris and assist farmers with berms and farm road repair.	N/A
Consistent with existing plans (describe points of intersection/departure)	Yes	Agree
Does this project comply with existing Local and State authority (codes, plan and ordinance)?	Yes	Agree
Does this project meet the intents and goals for the Hurricane Matthew Recovery Act?	Yes	Agree
Explain any benefits or impacts to the economy of the county from this project.	Improved drainage and water quality resulting from berm leveling/removal and benefits to the local economy by assisting farmers with recovery from financial impacts of the loss of income and damage to farm infrastructure.	Agree
For how long will this solution be effective?	Less than 10 years	Agree
How effective is the risk reduction?	Unknown	Agree
How many public facilities are involved in this project (buildings and infrastructure)?	>6	Agree
Is coordination with other communities/counties needed to complete this project?	No	Agree
Is this project consistent with Federal Laws	Yes	Agree
To what degree does this project adversely impact local floodplain/coastal zone management?	No Impact	Agree
To what degree will it be possible to positively quantify the environmental benefits and ROI of this project?	Medium to high confidence	N/A
What impact will this action have on the local economy/tax base?	Unknown	Agree
What impacts to the environment of the county will result from this project?	Water quality would be improved by this project as the removal of debris and removal of soil berms.	N/A
What is the capability of the local government to administer this project?	High	Agree
What is the financial range of this project?	\$101K - \$250K	Agree
What is the level of public support for this project?	High	Agree
What is the technical feasibility of this project?	Higher than 75%	Agree
Who will administer this project?	County	Agree

- Water/Sewer Line and Culvert Repair and Replacement:** This project would repair 40 culverts and replace damaged water and sewer lines adjacent to the culvert locations in Edgecombe County. The project outcomes include increased resiliency of stormwater infrastructure, roadway culverts, water and sewer infrastructure, and upgrades to address problems, such as roadway closures, that occurred during the flooding of Hurricane Matthew, as well as improved water quality.

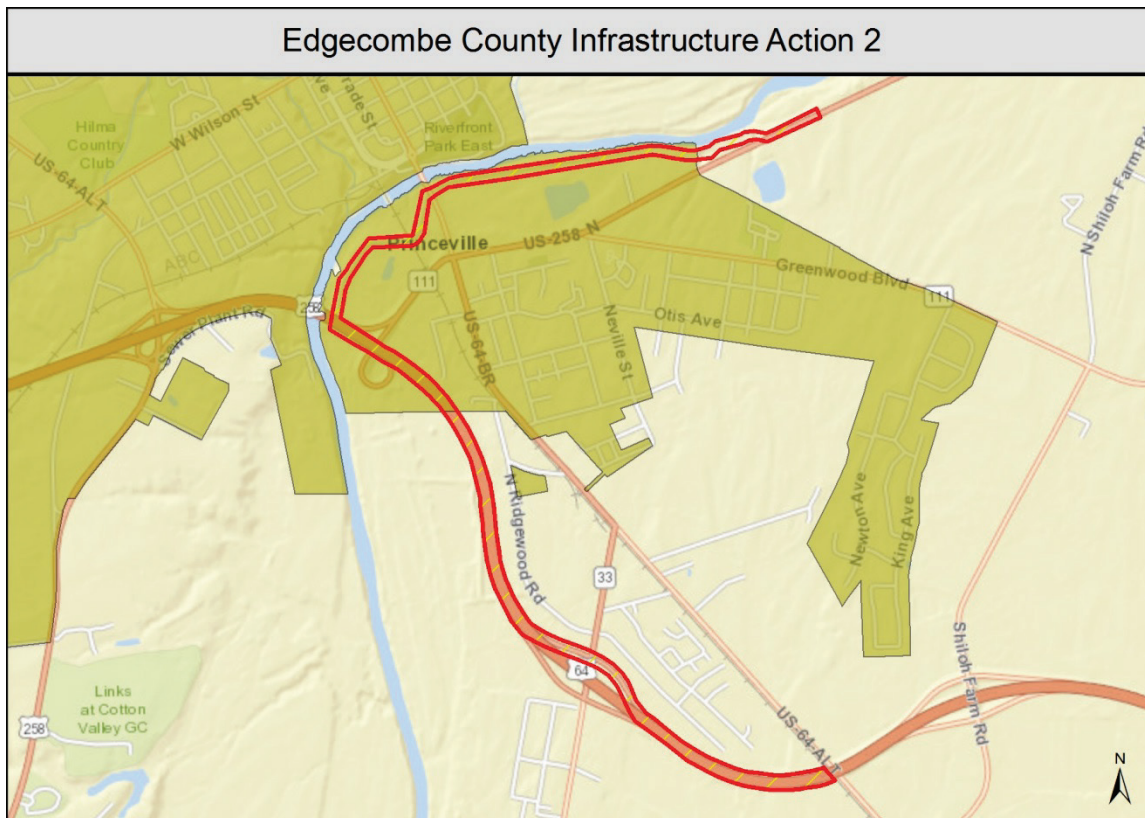


Figure 23. Infrastructure Action 2: Water/Sewer Line and Culvert Repair and Replacement

Edgecombe Infrastructure Action 2: Water/Sewer Line and Culvert Repair and Replacement

County: Edgecombe

Priority Grouping: Medium Priority

Priority Ranking: 16

Project Timeframe: Undetermined at this time.

Location: County-wide

Project Summary: This project would repair 40 culverts, and replace damaged water and sewer lines adjacent to the culvert locations in Edgecombe County. The project outcomes include increased resiliency of roadway culverts, water and sewer infrastructure, and upgrades to address problems such as roadway closures that occurred during the flooding of Hurricane Matthew.

Question	Response	Disposition
Articulate how this project addresses an unmet need that has been created by damage from Hurricane Matthew.	Many culverts water and sewer lines and pumping stations were damaged due to Hurricane Matthew which poses an immediate concern for the handling of water and wastewater.	N/A
Consistent with existing plans (describe points of intersection/departure)	Yes	Agree
Does this project comply with existing Local and State authority (codes, plan and ordinance)?	Yes	Agree
Does this project meet the intents and goals for the Hurricane Matthew Recovery Act?	Yes	Agree
Explain any benefits or impacts to the economy of the county from this project.	Improved roadway water and wastewater infrastructure would help the resiliency of the community and potentially encourage new development.	Agree
For how long will this solution be effective?	More than 50 years	Agree
How effective is the risk reduction?	Unknown	Agree
How many public facilities are involved in this project (buildings and infrastructure)?	>6	Agree
Is coordination with other communities/counties needed to complete this project?	No	Agree
Is this project consistent with Federal Laws	Yes	Agree
To what degree does this project adversely impact local floodplain/coastal zone management?	No Impact	Agree
To what degree will it be possible to positively quantify the environmental benefits and ROI of this project?	Medium to high confidence	N/A
What impact will this action have on the local economy/tax base?	Unknown	Agree
What impacts to the environment of the county will result from this project?	By improving roadway water and wastewater infrastructure and the unintentional releases of wastewater into waterways and waterbodies water pollution would be decreased thereby improving water quality.	N/A
What is the capability of the local government to administer this project?	Medium	Agree
What is the financial range of this project?	\$1M+	Agree
What is the level of public support for this project?	High	Agree
What is the technical feasibility of this project?	Higher than 75%	Agree
Who will administer this project?	County	Agree

Low Priority Infrastructure Strategies

Pillar	Action Name	Priority	Overall Ranking
Infrastructure	Edgecombe Infrastructure Action 3: Improve Mobility for Underserved Population	Low	26

Table 14. Edgecombe Low Priority Infrastructure Summary

This project represents the infrastructure strategy that Edgecombe County indicated is of a lower priority to address. Additional detail can be found below:

- **Improve Mobility for Underserved Populations:** Currently, Tar River Transit service provides fixed route transit in Rocky Mount and demand response (paratransit) transit service to both Edgecombe and Nash Counties. Operating hours are Monday through Friday, 6:45 am to 6:45 pm and Saturday from 9:15 am to 5:45 pm. While this limited paratransit service is available, three specific needs have been identified. First, evening and weekend hours of service should be expanded to better accommodate work schedules by offering routes to commute home and provide for weekend work shifts. Second, access to fixed routes could make transit a consistent and dependable daily public transportation alternative. Third, offering park-and-ride services near shuttle stops in all the towns serviced by the Rural General Public Shuttle could provide an opportunity for residents in more rural settings to connect and access work-related transit trips at their nearby communities.
- **This is a county-wide project, so no project area map has been included.**

Edgecombe Infrastructure Action 3: Improve Mobility for Underserved Population

County: Edgecombe

Priority Grouping: Low Priority

Priority Ranking: 26

Project Timeframe: Undetermined at this time.

Location: County-wide

Project Summary: This project will address three aspects of mobility improvements: First, evening and weekend hours of service should be expanded to better accommodate work schedules by offering routes to commute home and provide for weekend work shifts. Second, access to fixed routes could make transit a consistent and dependable daily public transportation alternative. Third, offering park-and-ride services near shuttle stops in all the towns serviced by the Rural General Public Shuttle could provide an opportunity for residents in more rural settings to connect and access work-related transit trips at their nearby communities.

Question	Response	Disposition
Articulate how this project addresses an unmet need that has been created by damage from Hurricane Matthew.	Transit service in Edgecombe county has been identified as an unmet need by municipal and county officials particularly for low-income communities with workers without access to vehicles.	N/A
Consistent with existing plans (describe points of intersection/departure)	Yes	Agree
Does this project comply with existing Local and State authority (codes, plan and ordinance)?	Yes	Agree
Does this project meet the intents and goals for the Hurricane Matthew Recovery Act?	Yes	Agree
Explain any benefits or impacts to the economy of the county from this project.	Reliable and improved transit service will increase access to jobs and promote better opportunities for residents commuting to work or managing daily errands by providing enhanced daily transportation.	Agree
For how long will this solution be effective?	Between 11 and 30 years	Agree
How effective is the risk reduction?	Unknown	Agree
How many public facilities are involved in this project (buildings and infrastructure)?	1-3	Agree
Is coordination with other communities/counties needed to complete this project?	No	Agree
Is this project consistent with Federal Laws	Yes	Agree
To what degree does this project adversely impact local floodplain/coastal zone management?	No Impact	Agree
To what degree will it be possible to positively quantify the environmental benefits and ROI of this project?	Medium to high confidence	N/A
What impact will this action have on the local economy/tax base?	Unknown	Agree
What impacts to the environment of the county will result from this project?	Increased transit services can reduce vehicle miles traveled and reduce air pollution.	N/A
What is the capability of the local government to administer this project?	Medium	Agree
What is the financial range of this project?	\$251K - \$500K	Agree
What is the level of public support for this project?	Medium	Agree
What is the technical feasibility of this project?	Between 26 and 50%	Agree
Who will administer this project?	Regional	Agree

Environmental, Ecosystem and Agricultural Strategies

High Priority Environmental Strategies

Pillar	Action Name	Priority	Overall Ranking
Environment	Edgecombe Environment Action 3: Indoor Air and Toxin Quality Assessment and Remediation	High	9
Environment	Edgecombe Environment Action 6: Disaster Response Program Enhancement	High	12

Table 15. Edgecombe High Priority Environmental Summary

These projects represent the environmental strategies that Edgecombe County indicated are the highest priority to address. Additional detail can be found below:

- **Indoor Air and Toxin Quality Assessment and Remediation:** Due to the flooding of Hurricane Matthew, some homes and buildings may have indoor air quality and toxin issues, such as mold, especially in homes that were repaired in-kind rather than replaced. This project would assess the homes and buildings needing further remediation to address these concerns, and provide remediation services for those impacted houses.
- **This is a county-wide project, so no project area map has been included.**

Edgecombe Environment Action 3: Indoor Air and Toxin Quality Assessment and Remediation

County: Edgecombe

Priority Grouping: High Priority

Priority Ranking: 9

Project Timeframe: 1-2 years

Location: County-wide

Project Summary: Due to the flooding from Hurricane Matthew, some homes and buildings may have indoor air quality and toxin issues such as mold, especially in homes that were repaired rather than replaced. This project would assess the homes and buildings needing further remediation to address these concerns, and provide remediation services for those impacted houses.

Question	Response	Disposition
Articulate how this project addresses an unmet need that has been created by damage from Hurricane Matthew.	This project would address these issues by identifying homes and buildings needing further remediation and providing funding for remediation.	N/A
Consistent with existing plans (describe points of intersection/departure)	Yes	Agree
Does this project comply with existing Local and State authority (codes, plan and ordinance)?	Yes	Agree
Does this project meet the intents and goals for the Hurricane Matthew Recovery Act?	Yes	Agree
Explain any benefits or impacts to the economy of the county from this project.	Improved public health and wellbeing of the residents of the community reducing future health costs.	Agree
For how long will this solution be effective?	Less than 10 years	Agree
How effective is the risk reduction?	Unknown	Agree
How many public facilities are involved in this project (buildings and infrastructure)?	0	Agree
Is coordination with other communities/counties needed to complete this project?	No	Agree
Is this project consistent with Federal Laws	Yes	Agree
To what degree does this project adversely impact local floodplain/coastal zone management?	Unknown	Agree
To what degree will it be possible to positively quantify the environmental benefits and ROI of this project?	Minimal to low confidence	N/A
What impact will this action have on the local economy/tax base?	Unknown	Agree
What impacts to the environment of the county will result from this project?	This project would improve the indoor air quality of affected structures by identifying homes and businesses and providing remediation to affected structures due to flooding thereby improving community health.	N/A
What is the capability of the local government to administer this project?	Medium	Agree
What is the financial range of this project?	\$101K - \$250K	Agree
What is the level of public support for this project?	Medium	Agree
What is the technical feasibility of this project?	Between 51 and 75%	Agree
Who will administer this project?	County	Agree

- **Disaster Response Program Enhancement Action:** Substantially increase Disaster Response Program funding administered through the NC Department of Agriculture & Consumer Services – Division of Soil and Water Conservation. Increased funding levels would cover current practice needs as well as address needs not currently included, particularly field erosion control practices.
- **This is a county-wide project, so no project area map has been included.**

Edgecombe Environment Action 6: Disaster Response Program Enhancement

County: Edgecombe

Priority Grouping: High Priority

Priority Ranking: 12

Project Timeframe: 1 -2 years

Location: County-wide

Project Summary: Substantially increase Disaster Response Program funding administered through the NC Department of Agriculture & Consumer Services – Division of Soil and Water Conservation. Increased funding levels would cover current practice needs as well as address needs not currently included; particularly field erosion control practices.

Question	Response	Disposition
Articulate how this project addresses an unmet need that has been created by damage from Hurricane Matthew.	Current funding levels are not sufficient to meet the needs of farms impacted by Hurricane Matthew especially in terms of field erosion control practices.	N/A
Consistent with existing plans (describe points of intersection/departure)	The HMP encompassing Edgecombe County does include a goal of improving technical capability to respond to hazards. Therefore this project is consistent with existing plans.	Agree
Does this project comply with existing Local and State authority (codes, plan and ordinance)?	Yes	Agree
Does this project meet the intents and goals for the Hurricane Matthew Recovery Act?	Yes	Agree
Explain any benefits or impacts to the economy of the county from this project.	Agriculture benefits accrue and benefits result to the county economy.	Agree
For how long will this solution be effective?	Between 11 and 30 years	Agree
How effective is the risk reduction?	Unknown	Agree
How many public facilities are involved in this project (buildings and infrastructure)?	1-3	Agree
Is coordination with other communities/counties needed to complete this project?	No	Agree
Is this project consistent with Federal Laws	Yes	Agree
To what degree does this project adversely impact local floodplain/coastal zone management?	No Impact	Agree
To what degree will it be possible to positively quantify the environmental benefits and ROI of this project?	Low to moderate confidence	N/A
What impact will this action have on the local economy/tax base?	Between 26 and 50%	Agree
What impacts to the environment of the county will result from this project?	Positive effects to the environment.	N/A
What is the capability of the local government to administer this project?	High	Agree
What is the financial range of this project?	\$101K - \$250K	Agree
What is the level of public support for this project?	High	Agree
What is the technical feasibility of this project?	Higher than 75%	Agree
Who will administer this project?	State	Agree

Medium Priority Environmental Strategies

Pillar	Action Name	Priority	Overall Ranking
Environment	Edgecombe Environment Action 1: Environmental Justice and Health Vulnerability Assessment	Medium	20
Environment	Edgecombe Environment Action 4: Open Space and Park System Master Plan	Medium	21
Environment	Edgecombe Environment Action 5: Land Development Plan Update	Medium	22

Table 16. Edgecombe Medium Priority Environmental Summary

These projects represent the environmental strategies that Edgecombe County indicated are of a medium priority to address. Additional detail can be found below:

- Environmental Justice and Health Vulnerability Assessment:** This project would assess vulnerable populations, particularly older adults and environmental justice communities throughout Edgecombe County that may be disproportionately affected by storm impacts. This assessment would help to better understand how these populations in Edgecombe County were affected by cumulative flooding and disasters and to develop strategies for reducing their vulnerability. This assessment could be undertaken by state universities and/or community colleges and could be assisted by state and county health staff. It would follow the methodology and resources available from the FEMA Emergency Preparedness Demonstration Project and MDC, Inc. (originally known as "Manpower Development Corp.") partnership. This assessment would also look at the mental health impacts of disasters.
- This is a county-wide project, so no project area map has been included.**

Edgecombe Environment Action 1: Environmental Justice and Health Vulnerability Assessment

County: Edgecombe

Priority Grouping: Medium Priority

Priority Ranking: 20

Project Timeframe: 1-2 years

Location: County-wide

Project Summary: Environmental Justice and Health Vulnerability Assessment - This project would assess the vulnerable populations, particularly older adults and environmental justice communities throughout Edgecombe County that may be disproportionately affected. Older adults, especially those with chronic disease, disabilities, or who require extra assistance to leave an unsafe area and recover from an event are especially at risk. This assessment would help to better understand how these populations in Edgecombe County were affected by cumulative flooding and disasters and to develop strategies for reducing their vulnerability.

Question	Response	Disposition
Articulate how this project addresses an unmet need that has been created by damage from Hurricane Matthew.	Information and data on health effects of flood events on vulnerable populations is not well known and many environmental justice and socially vulnerable communities in Edgecombe have asserted the need to better understand potential health effects including mental health.	N/A
Consistent with existing plans (describe points of intersection/departure)	Yes	Agree
Does this project comply with existing Local and State authority (codes, plan and ordinance)?	Yes	Agree
Does this project meet the intents and goals for the Hurricane Matthew Recovery Act?	Yes	Agree
Explain any benefits or impacts to the economy of the county from this project.	Addressing public health would prevent loss of life and help people in the workforce return to work.	Agree
For how long will this solution be effective?	Between 11 and 30 years	Agree
How effective is the risk reduction?	Unknown	Agree
How many public facilities are involved in this project (buildings and infrastructure)?	1-3	Agree
Is coordination with other communities/counties needed to complete this project?	No	Agree
Is this project consistent with Federal Laws	Yes	Agree
To what degree does this project adversely impact local floodplain/coastal zone management?	No Impact	Agree
To what degree will it be possible to positively quantify the environmental benefits and ROI of this project?	Unknown	N/A
What impact will this action have on the local economy/tax base?	Unknown	Agree
What impacts to the environment of the county will result from this project?	This project would benefit the long term community health by better preparing environmental justice and socially vulnerable populations for future disasters.	N/A
What is the capability of the local government to administer this project?	Medium	Agree
What is the financial range of this project?	\$251K - \$500K	Agree
What is the level of public support for this project?	High	Agree
What is the technical feasibility of this project?	Higher than 75%	Agree
Who will administer this project?	Unknown	Agree

- **Open Space and Park System Master Plan:** Edgecombe County currently does not have any county parks, or a park plan. Edgecombe County has buyout properties that cannot be used for occupied structures, and lacks a comprehensive strategy to determine a) if parcels could be combined for future use, open space, and parks; b) if there are economically viable uses for these parcels; c) if certain parcels could be used by the community for community gardens, farmers markets, or economically viable use; and d) a strategy for ongoing maintenance including funding sources. The county has properties attained from buyouts during Hurricane Floyd and will have property that it attains from buyouts during Hurricane Matthew. Many of these properties have dilapidated structures because of a lack of funds to demolish them. Funds are needed to bring each parcel to a clean and stable state.
- **This is a county-wide project, so no project area map has been included.**

Edgecombe Environment Action 4: Open Space and Park System Master Plan

County: Edgecombe

Priority Grouping: Medium Priority

Priority Ranking: 21

Project Timeframe: 2-3 years

Location: County-wide

Project Summary: Open Space and Park System Master Plan - Edgecombe County has buyout properties that cannot be used for occupied structures, and has county parks and lacks a comprehensive strategy to determine 1.) If parcels could be combined for future use, open space, and parks 2.) If there are economically viable uses 3.) If there are mitigation/open space/park and recreational uses 4) If certain parcels could be used by the community for community gardens, farmers markets, or economically viable use 5) A strategy for ongoing maintenance including funding sources.

Question	Response	Disposition
Articulate how this project addresses an unmet need that has been created by damage from Hurricane Matthew.	The storm created additional open space for the county to manage creating a strain on resources. With a lack of an available coordinated plan to address these spaces the county has been left without a clear direction for managing them.	N/A
Consistent with existing plans (describe points of intersection/departure)	Yes	Agree
Does this project comply with existing Local and State authority (codes, plan and ordinance)?	Yes	Agree
Does this project meet the intents and goals for the Hurricane Matthew Recovery Act?	Yes	Agree
Explain any benefits or impacts to the economy of the county from this project.	Creating an Open Space and Parks System Plan will enable the county to qualify for grant funds to develop parks.	Agree
For how long will this solution be effective?	More than 50 years	Agree
How effective is the risk reduction?	Unknown	Agree
How many public facilities are involved in this project (buildings and infrastructure)?	0	Agree
Is coordination with other communities/counties needed to complete this project?	Yes	Agree
Is this project consistent with Federal Laws	Yes	Agree
To what degree does this project adversely impact local floodplain/coastal zone management?	Unknown	Agree
To what degree will it be possible to positively quantify the environmental benefits and ROI of this project?	Unknown	N/A
What impact will this action have on the local economy/tax base?	Unknown	Agree
What impacts to the environment of the county will result from this project?	Planning for open space parks and economically viable uses will enable the county to preserve places of environmental/cultural sensitivity as open/green space. It will also remove vacant and derelict structures.	N/A
What is the capability of the local government to administer this project?	High	Agree
What is the financial range of this project?	\$101K - \$250K	Agree
What is the level of public support for this project?	High	Agree
What is the technical feasibility of this project?	Between 51 and 75%	Agree
Who will administer this project?	County	Agree

- **Edgecombe County Land Development Plan Update:** This project provides a consolidated multi-jurisdictional plan needed to guide development in the county and its municipalities. The plan will update the 2007 plan and address sustainable and resilient development, planning and design, housing development, agricultural protection, stakeholder and public involvement, implementation and zoning, and funding mechanisms. The plan will assess the constraints and opportunities of the built environment over a period of ten years.
- **This is a county-wide project, so no project area map has been included.**

Edgecombe Environment Action 5: Land Development Plan Update

County: Edgecombe

Priority Grouping: Medium Priority

Priority Ranking: 22

Project Timeframe: 2017 - 2027

Location: County-wide

Project Summary: An unmet high priority need identified by county officials is the Update of its Land Development Plan. This project provides a consolidated multi-jurisdictional plan that will serve the county and its municipalities. The plan will update the 2007 plan and address sustainable and resilient development, planning and design, housing development, agricultural protection, stakeholder and public involvement, implementation and zoning, and funding mechanisms. The plan will assess the constraints and opportunities of the built environment over a period of ten years.

Question	Response	Disposition
Articulate how this project addresses an unmet need that has been created by damage from Hurricane Matthew.	This project will address improved and updated planning to target growth in areas outside of the floodplain and provide updated policies and implementation to address resilient sustainable development.	N/A
Consistent with existing plans (describe points of intersection/departure)	Yes	Agree
Does this project comply with existing Local and State authority (codes, plan and ordinance)?	Yes	Agree
Does this project meet the intents and goals for the Hurricane Matthew Recovery Act?	Yes	Agree
Explain any benefits or impacts to the economy of the county from this project.	The Land Development Plan provides goals and objectives for economic development enhancing the built environment and creating a more sustainable and resilient community.	Agree
For how long will this solution be effective?	Between 11 and 30 years	Agree
How effective is the risk reduction?	Unknown	Agree
How many public facilities are involved in this project (buildings and infrastructure)?	0	Agree
Is coordination with other communities/counties needed to complete this project?	No	Agree
Is this project consistent with Federal Laws	Yes	Agree
To what degree does this project adversely impact local floodplain/coastal zone management?	No Impact	Agree
To what degree will it be possible to positively quantify the environmental benefits and ROI of this project?	Minimal to low confidence	N/A
What impact will this action have on the local economy/tax base?	Unknown	Agree
What impacts to the environment of the county will result from this project?	The Land Use Plan can help identify important environmental natural and cultural resources and development strategies for their use and protection.	N/A
What is the capability of the local government to administer this project?	Medium	Agree
What is the financial range of this project?	\$101K - \$250K	Agree
What is the level of public support for this project?	High	Agree
What is the technical feasibility of this project?	Higher than 75%	Agree
Who will administer this project?	County	Agree

Low Priority Environmental Strategies

Pillar	Action Name	Priority	Overall Ranking
Environment	Edgecombe Environment Action 7: Implement Riparian Buffers	Low	23
Environment	Edgecombe Environment Action 2: Clear Waterways of Debris	Low	24

Table 17. Edgecombe Low Priority Environmental Summary

This project represents the environmental strategy that Edgecombe County indicated is of a lower priority to address. Additional detail can be found below:

- **Implement Riparian Buffers:** This project would implement riparian buffers along waterways in Edgecombe County to reduce runoff and nutrients that degrade water quality. Riparian buffers would be implemented in partnership with landowners and Edgecombe County Soil and Water Conservation using resources available from state and national programs.
- **This is a county-wide project, so no project area map has been included.**

Edgecombe Environment Action 7: Implement Riparian Buffers

County: Edgecombe

Priority Grouping: Low Priority

Priority Ranking: 23

Project Timeframe: 1-4 years

Location: County wide

Project Summary: This project would implement riparian buffers along waterways in Edgecombe County to reduce runoff and nutrients that degrade water quality. These riparian buffers would be implemented in partnership with landowners and Edgecombe County Soil and Water Conservation using resources available from state and national programs.

Question	Response	Disposition
Articulate how this project addresses an unmet need that has been created by damage from Hurricane Matthew.	During Hurricane Matthew debris blocked drainage swales canals and other stormwater conveyances. Debris removal will help prevent future flooding and water backing up into homes businesses and agriculture crops.	N/A
Consistent with existing plans (describe points of intersection/departure)	Yes	Agree
Does this project comply with existing Local and State authority (codes, plan and ordinance)?	Yes	Agree
Does this project meet the intents and goals for the Hurricane Matthew Recovery Act?	Yes	Agree
Explain any benefits or impacts to the economy of the county from this project.	Improved water quality supports the local economy by promoting use of water resources through recreation and fishing.	Agree
For how long will this solution be effective?	Between 11 and 30 years	Agree
How effective is the risk reduction?	50-100 year event	Agree
How many public facilities are involved in this project (buildings and infrastructure)?	0	Agree
Is coordination with other communities/counties needed to complete this project?	No	Agree
Is this project consistent with Federal Laws	Yes	Agree
To what degree does this project adversely impact local floodplain/coastal zone management?	No Impact	Agree
To what degree will it be possible to positively quantify the environmental benefits and ROI of this project?	Medium to high confidence	N/A
What impact will this action have on the local economy/tax base?	Unknown	Agree
What impacts to the environment of the county will result from this project?	This project would improve water quality by reducing runoff and nutrients that degrade water quality.	N/A
What is the capability of the local government to administer this project?	Medium	Agree
What is the financial range of this project?	\$501K - \$1M	Agree
What is the level of public support for this project?	Medium	Agree
What is the technical feasibility of this project?	Between 51 and 75%	Agree
Who will administer this project?	County	Agree

- **Clear Waterways of Debris:** Collaborating with the statewide Big Sweep cleanup effort; clear waterways and watersheds of debris and litter that exacerbate flooding and degrade water quality. Big Sweep is an annual volunteer effort of residents to remove litter from their communities. This project would occur each year in order to maintain waterways free of the debris that can increase flooding. Communities may partner with hardware and equipment stores to provide volunteers with the necessary tools.
- **This is a county-wide project, so no project area map has been included.**

Edgecombe Environment Action 2: Clear Waterways of Debris

County: Edgecombe

Priority Grouping: Low Priority

Priority Ranking: 24

Project Timeframe: Annually

Location: County-wide

Project Summary: Collaborating with the statewide Big Sweep cleanup effort; clear waterways and watersheds of debris and litter that exacerbate flooding and degrade water quality. Big Sweep is an annual volunteer effort of residents to remove litter from their communities. This project would occur each year in order to maintain waterways free of the debris that can increase flooding. Communities may partner with hardware and equipment stores to provide volunteers with the necessary tools.

Question	Response	Disposition
Articulate how this project addresses an unmet need that has been created by damage from Hurricane Matthew.	Hurricane Matthew added more debris to the waterways. Much of this debris still remains posing a water quality issue in the short-term and an increased risk of flooding in the long-term.	N/A
Consistent with existing plans (describe points of intersection/departure)	Yes	Agree
Does this project comply with existing Local and State authority (codes, plan and ordinance)?	Yes	Agree
Does this project meet the intents and goals for the Hurricane Matthew Recovery Act?	Yes	Agree
Explain any benefits or impacts to the economy of the county from this project.	Improved water quality resulting from the removal of debris benefits the local economy by encouraging recreation and tourism.	Agree
For how long will this solution be effective?	Less than 10 years	Agree
How effective is the risk reduction?	Unknown	Agree
How many public facilities are involved in this project (buildings and infrastructure)?	0	Agree
Is coordination with other communities/counties needed to complete this project?	No	Agree
Is this project consistent with Federal Laws	Yes	Agree
To what degree does this project adversely impact local floodplain/coastal zone management?	No Impact	Agree
To what degree will it be possible to positively quantify the environmental benefits and ROI of this project?	Minimal to low confidence	N/A
What impact will this action have on the local economy/tax base?	Less than 25%	Agree
What impacts to the environment of the county will result from this project?	Water quality would be improved by this project as the removal of debris and litter that may cause pollution and harm to stream ecology also prevents water stagnation that deteriorates water quality.	N/A
What is the capability of the local government to administer this project?	High	Agree
What is the financial range of this project?	\$0- \$50K	Agree
What is the level of public support for this project?	Medium	Agree
What is the technical feasibility of this project?	Higher than 75%	Agree
Who will administer this project?	County	Agree

Summary

Implementation has already begun for some of these actions but for those that have not already been funded, the State of North Carolina will begin a process of prioritizing the actions and seeking to match a funding stream to each action. Those that are not matched with a funding source will be added to the State's Unmet Needs Report. Funding for Unmet Needs will be sought through additional funding from Congress and from the North Carolina General Assembly. Any action that cannot be matched to a funding source should be incorporated into the County's Hazard Mitigation Plan for consideration for future funding. It is important to seek to implement as many of these actions as feasible. Doing so will significantly contribute to helping improve the resiliency of North Carolina's communities.